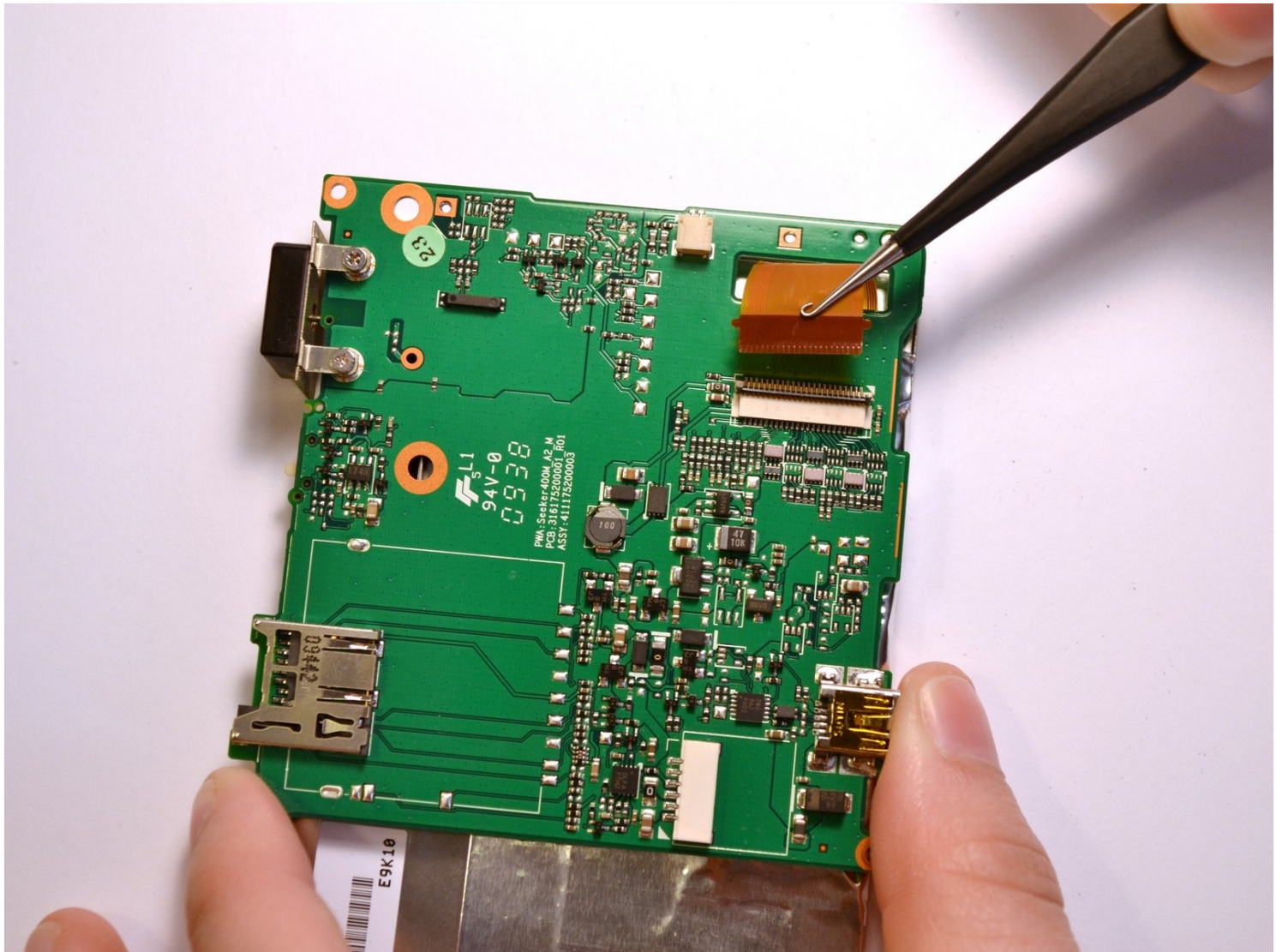




# Magellan RoadMate 1440 Motherboard Replacement

Remove the motherboard from the device for...

Written By: Miller Hall



## INTRODUCTION

Remove the motherboard from the device for replacement. If the device will not turn on, but the battery is still charged, the motherboard might need to be replaced.

---

### TOOLS:

Phillips #0 Screwdriver (1)

Heavy-Duty Spudger (1)

---

## Step 1 — Magellan RoadMate 1440 Back Cover Disassembly



- Place the GPS with the screen facing down.

## Step 2



- Remove the four 4.2 mm screws on the back cover of the device using a Phillips #0 screwdriver.

## Step 3



- Remove the two 4.2mm screws at the bottom of the device using a Phillips #0 screwdriver.

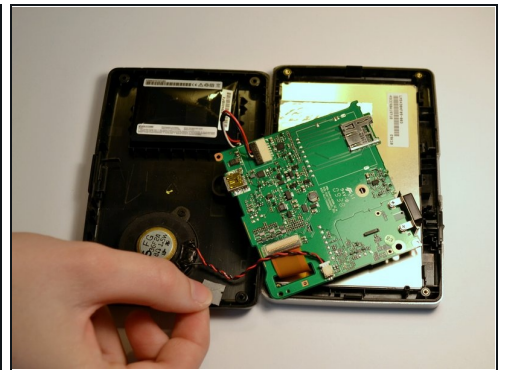
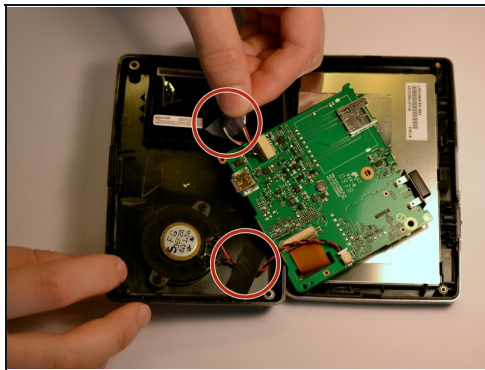


## Step 4



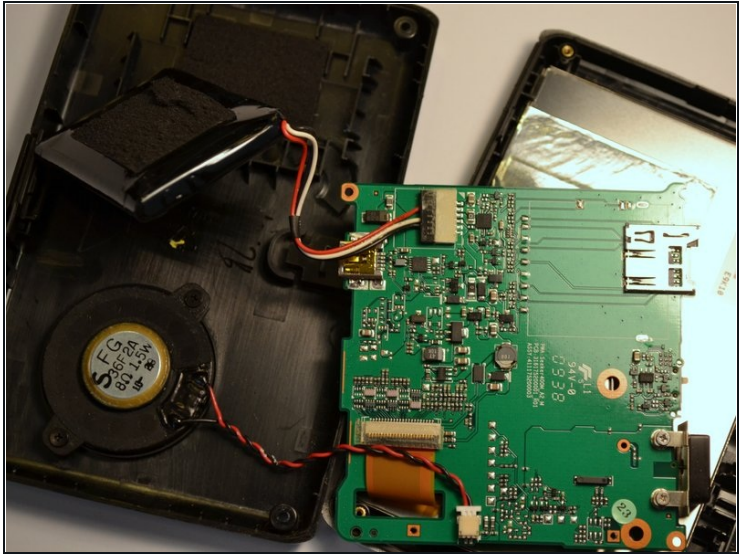
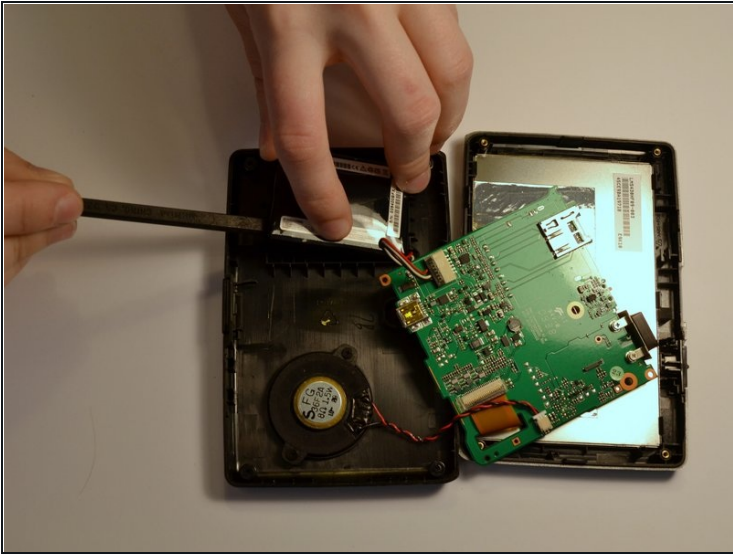
- Insert the black spudger into the crease in the side of the GPS.
- Move the end of the spudger down to break the seal between the two plastic shells.
- Continue doing this along each side of the GPS to ensure a smooth removal.

## Step 5



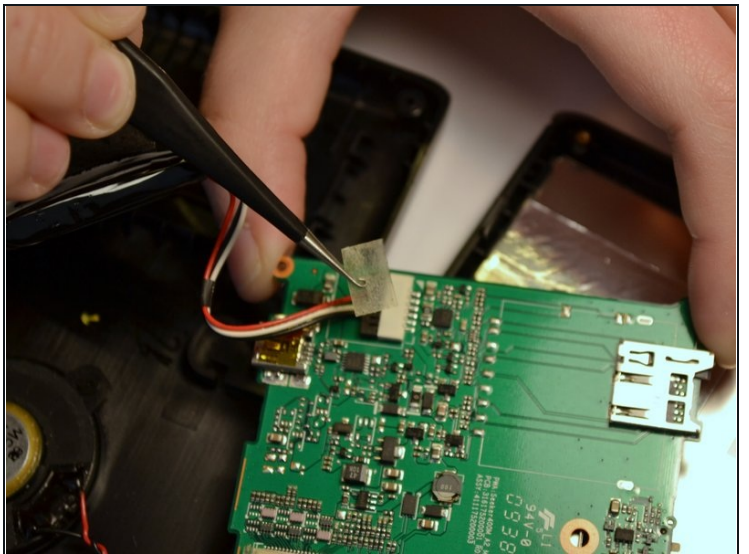
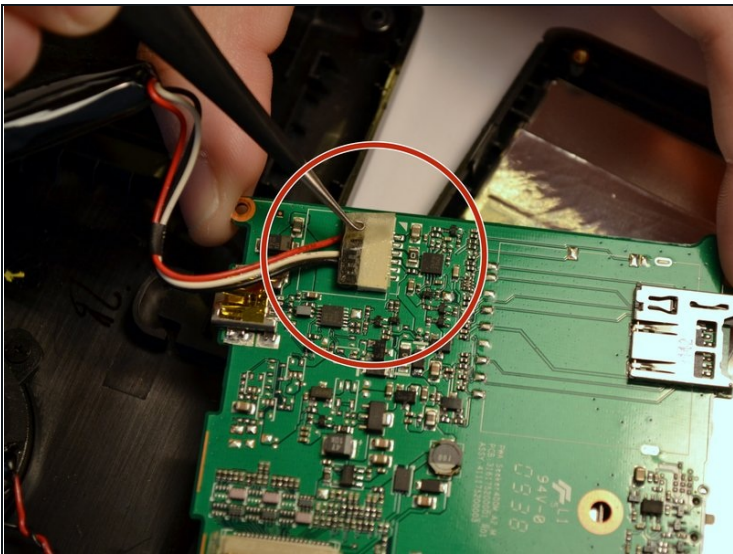
- Fully separate the two sides of the case.
- Remove the tape on the battery wires and the tape on the speaker wires.

## Step 6 — Battery



- Use the black spudger to break the seal between the adhesive and battery. Use the same spudger to continue to pry the battery from the backing
- ⓘ This may be a little tough to separate the battery and the adhesive

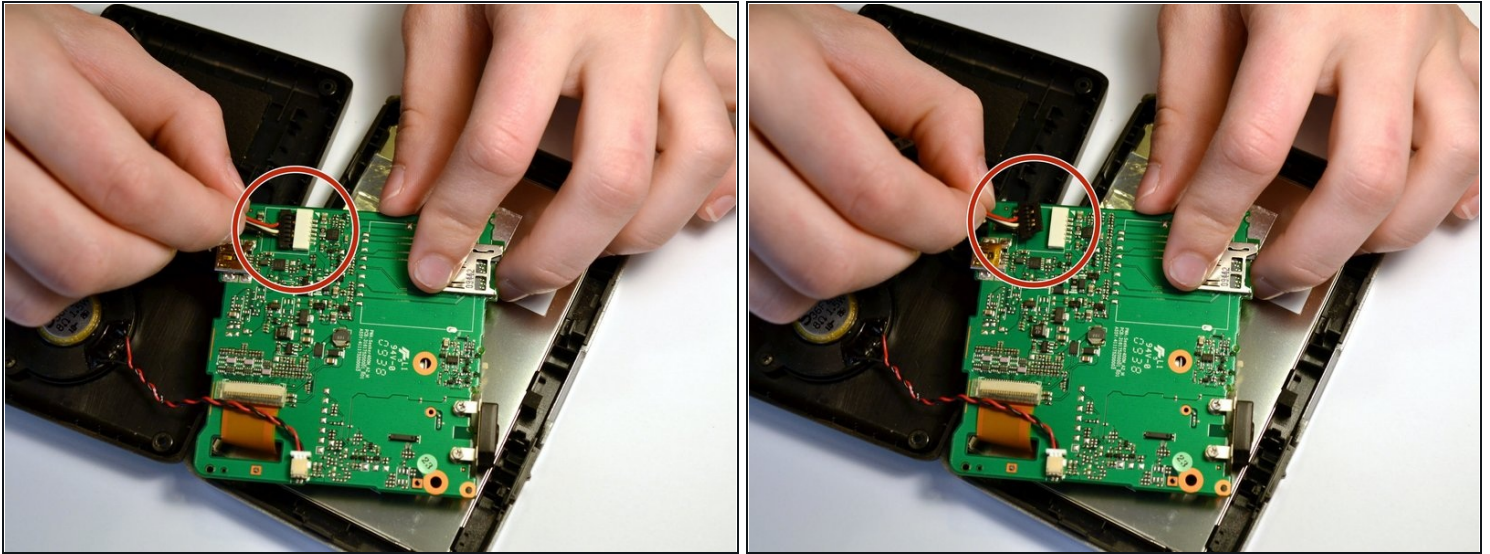
## Step 7



- Lift the battery from the device
- Once the battery is free from the adhesive, remove the piece of tape with a pair of [tweezers](#) that is covering the connection of the battery to the motherboard.



## Step 8

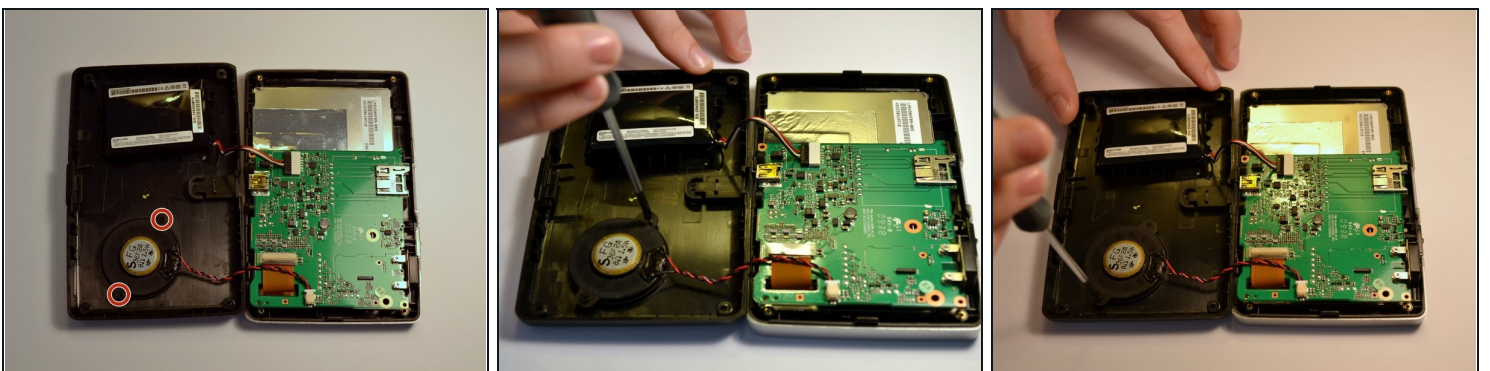


- Unplug the battery from the motherboard by pulling back the clips and pulling the wires away from the motherboard's receptacle

⚠ It is important for your and the device's safety to remove the battery before continuing with any other part removals.

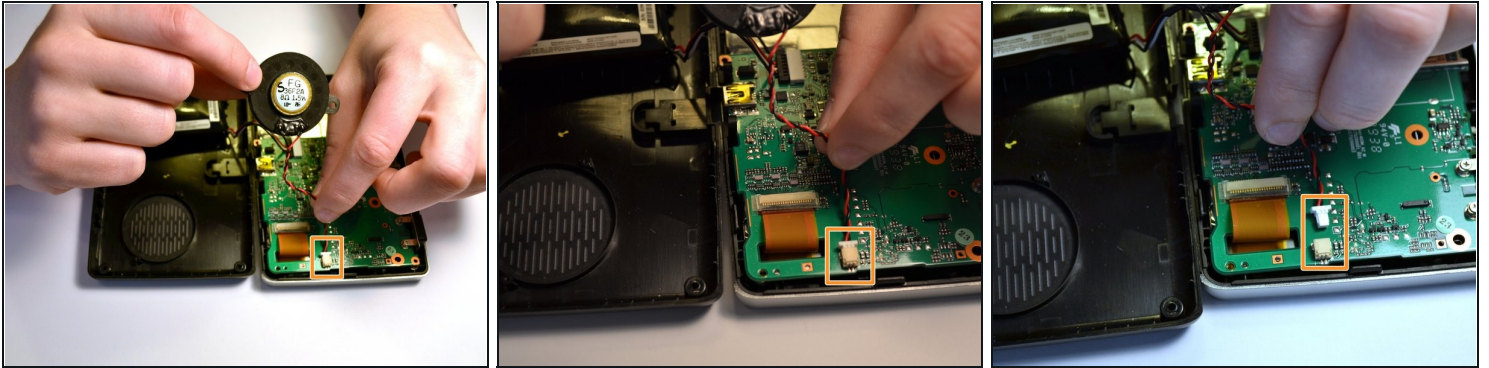
- ⓘ It is not necessary to separate the red and white wires from the battery. A replacement battery pack will come with similar wires already attached.

## Step 9 — Speaker



- After the back has been removed, locate each of the screws securing the speaker to the inside of the back cover.
- Use a Phillips #0 screwdriver to remove the two 3.8mm Phillips #0 screws.

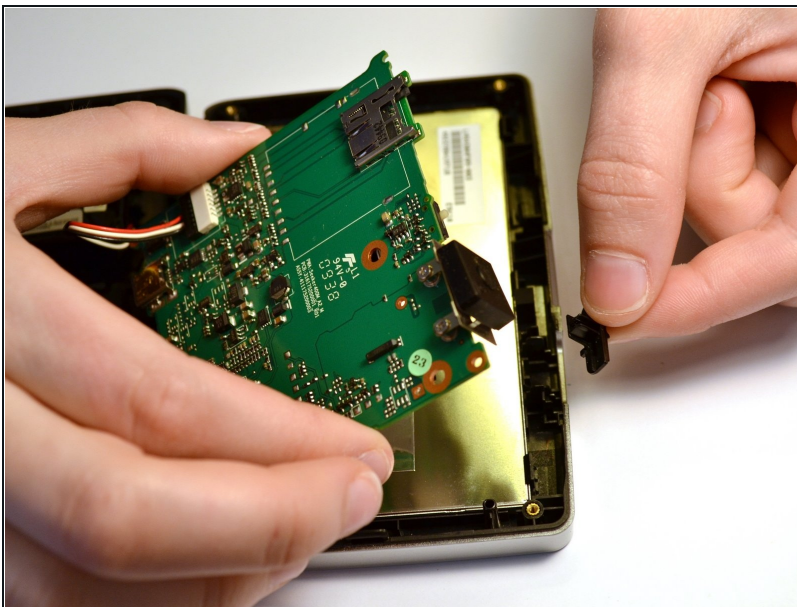
## Step 10



① The speaker is connected to the motherboard by a few wires

- Gently remove the connector from the motherboard to completely remove the speaker.

## Step 11 — Power Switch

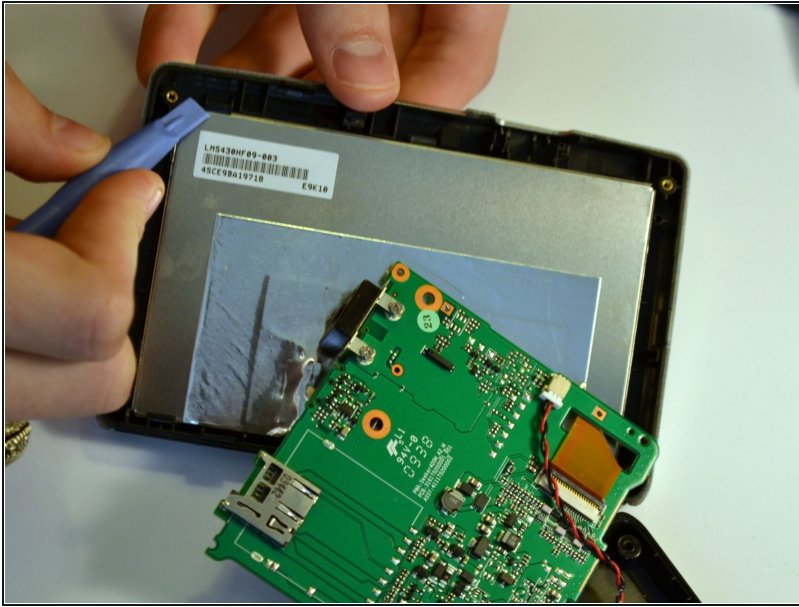


- Once the back cover has been removed, lift the power switch from the device.

① This is only a sliding switch, the button to power the device on is inside the unit

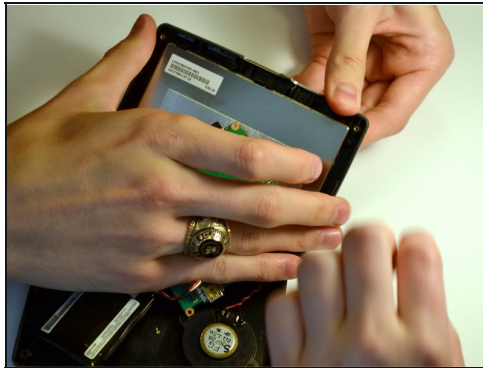
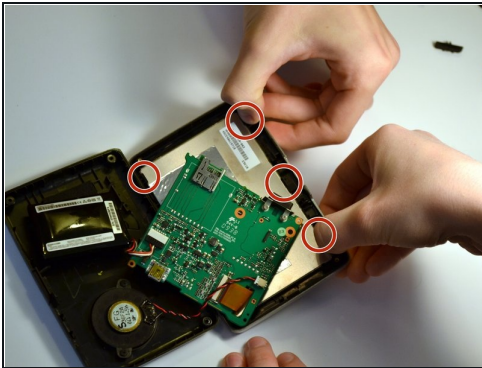


## Step 12 — Screen



- Replace the device's screen.

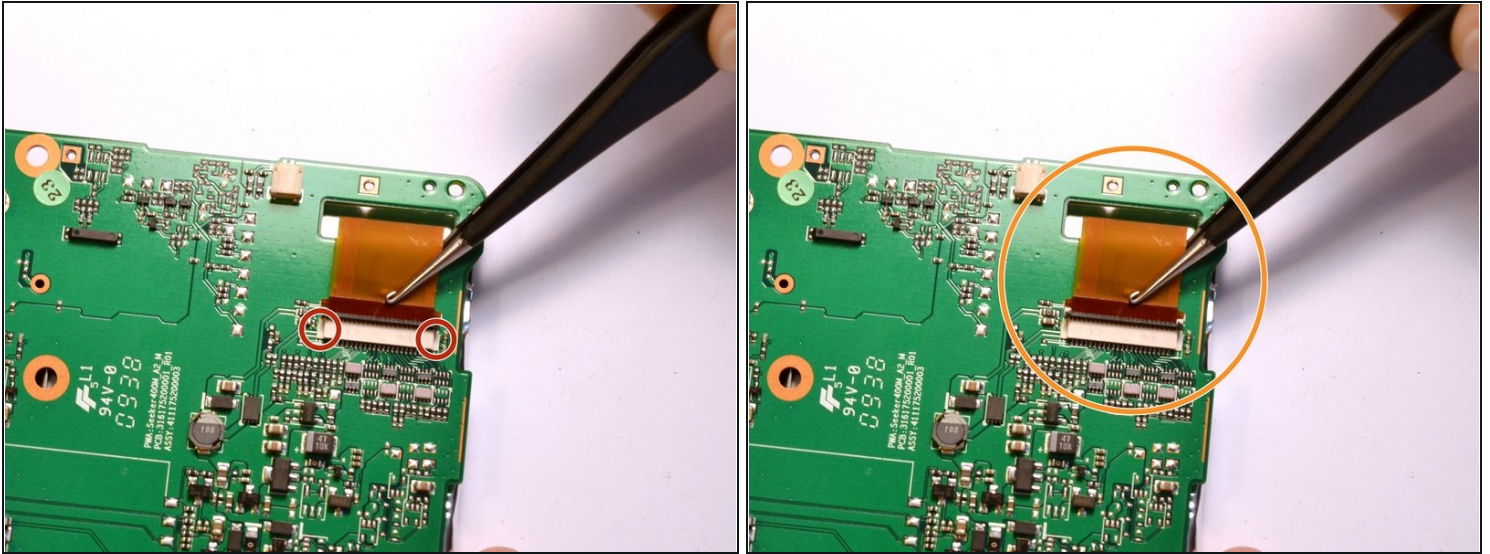
## Step 13



- ① It may be necessary to get help from a friend to hold the device stable while removing the screen.
- Using two hands, pull back the tabs holding the screen in place.
- Use a spudger to help use leverage to remove the screen, if necessary

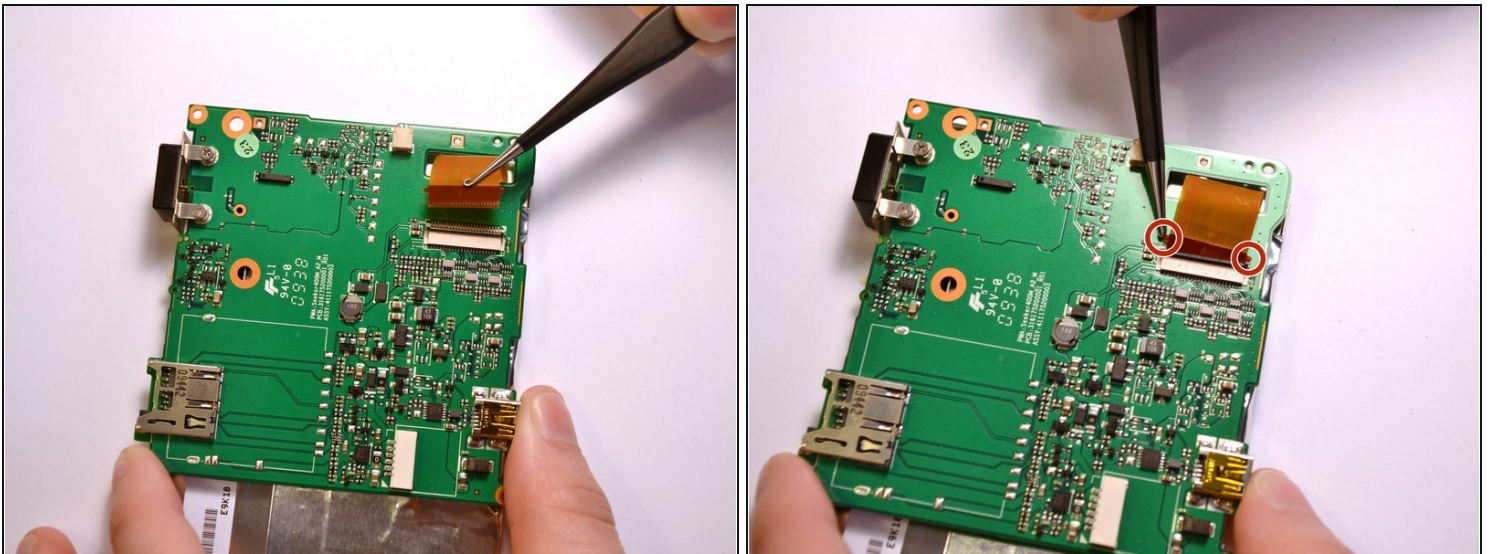


## Step 14



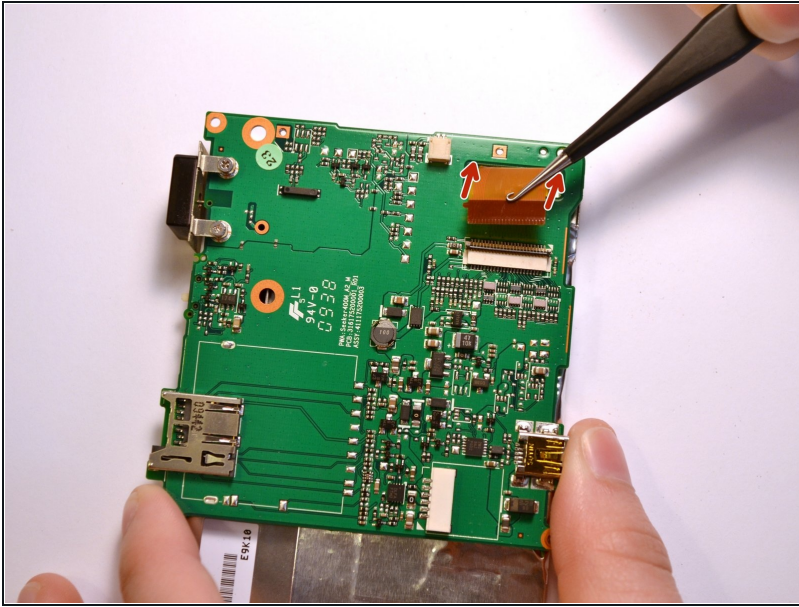
- Raise the switch locking the ribbon cable in place.
- Using tweezers, pull the ribbon cable from the socket.

## Step 15



- With the ribbon cable removed, the screen is completely disconnected from the device.
- To replace the ribbon cable, press the two tabs to push the head into the socket.

## Step 16 — Motherboard



- Now that the screen has been removed from the motherboard, the motherboard is not connected to anything on the device.
- Slide the ribbon cable through the opening in the circuit board in order to separate the two.

---

To reassemble your device, follow these instructions in reverse order.