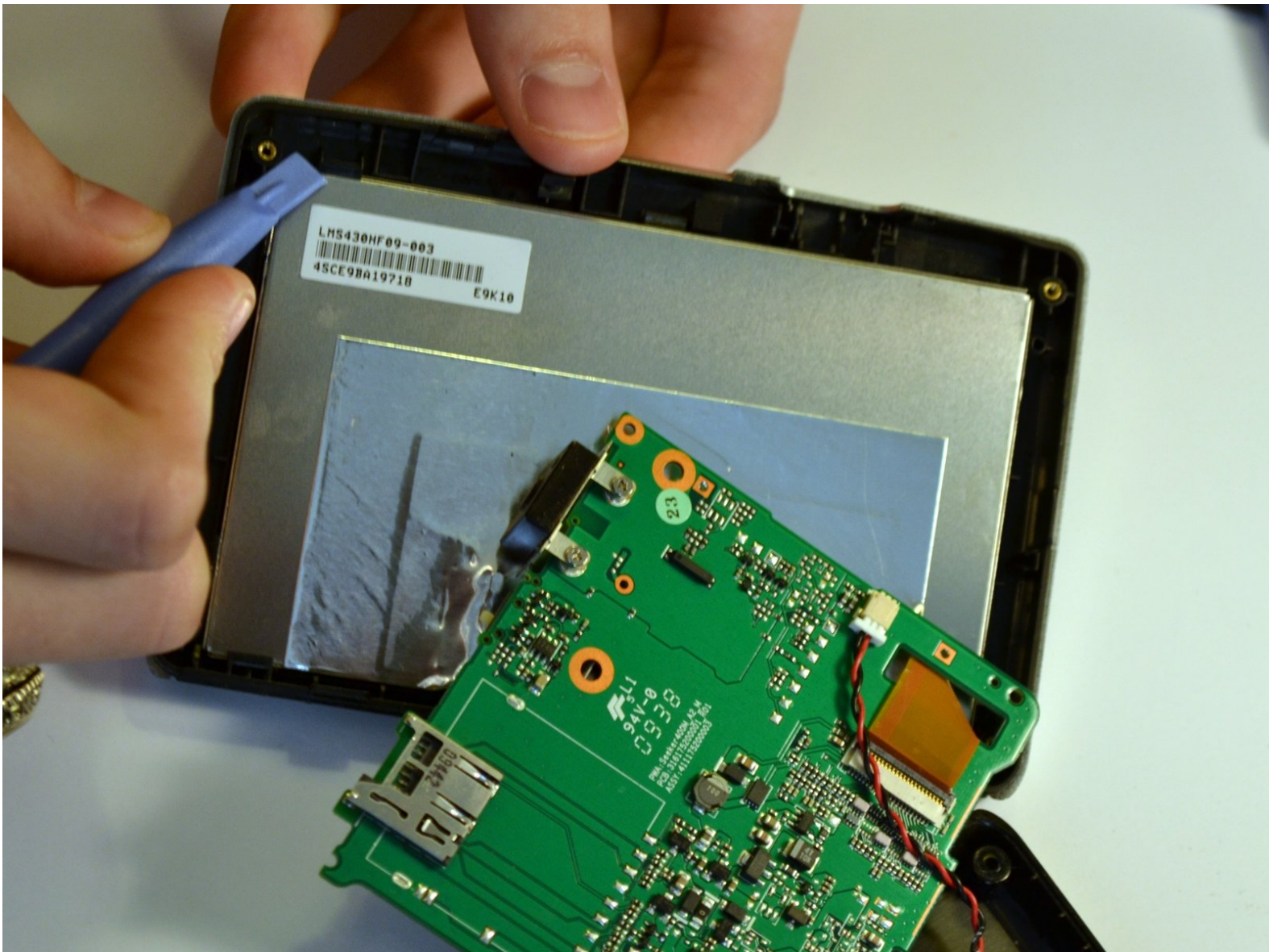




Magellan RoadMate 1440 Screen Replacement

If there is a problem with the screen which is due to a physical flaw, it will need to be replaced.
This guide shows how to remove the screen for replacement.

Written By: Miller Hall



INTRODUCTION

After removing the back cover and battery, follow this guide in order to remove the screen from the device.

TOOLS:

- [Phillips #0 Screwdriver](#) (1)
 - [Heavy-Duty Spudger](#) (1)
-

Step 1 — Magellan RoadMate 1440 Back Cover Disassembly



- Place the GPS with the screen facing down.

Step 2



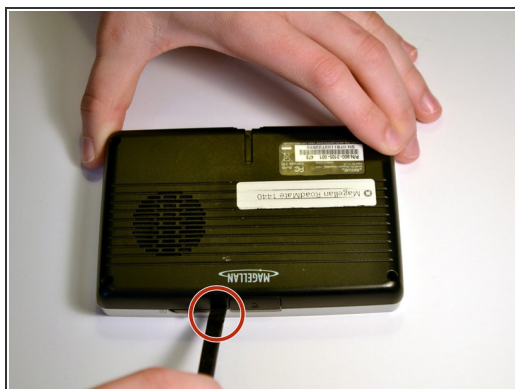
- Remove the four 4.2 mm screws on the back cover of the device using a Phillips #0 screwdriver.

Step 3



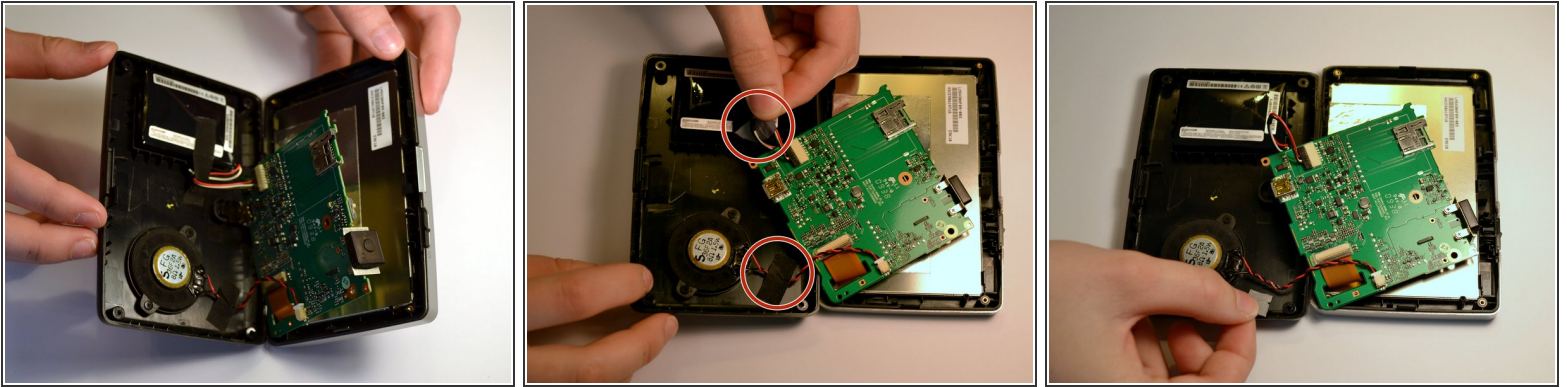
- Remove the two 4.2mm screws at the bottom of the device using a Phillips #0 screwdriver.

Step 4



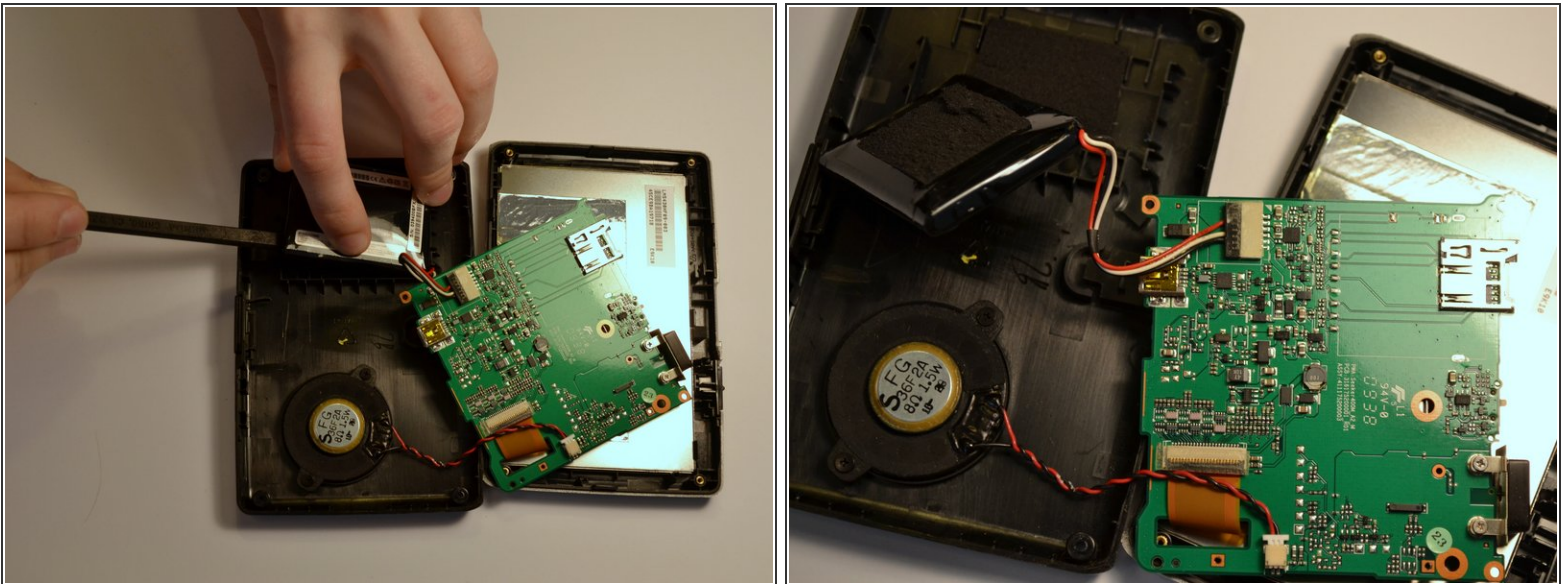
- Insert the black spudger into the crease in the side of the GPS.
- Move the end of the spudger down to break the seal between the two plastic shells.
- Continue doing this along each side of the GPS to ensure a smooth removal.

Step 5



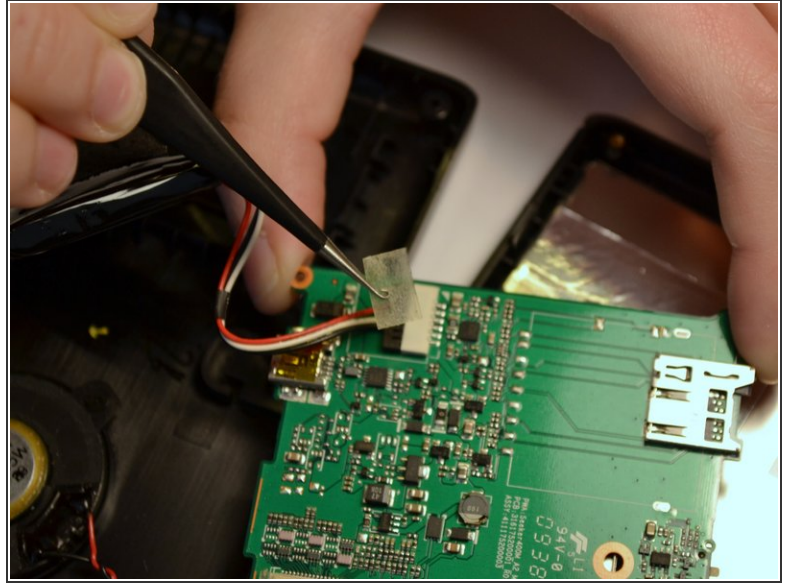
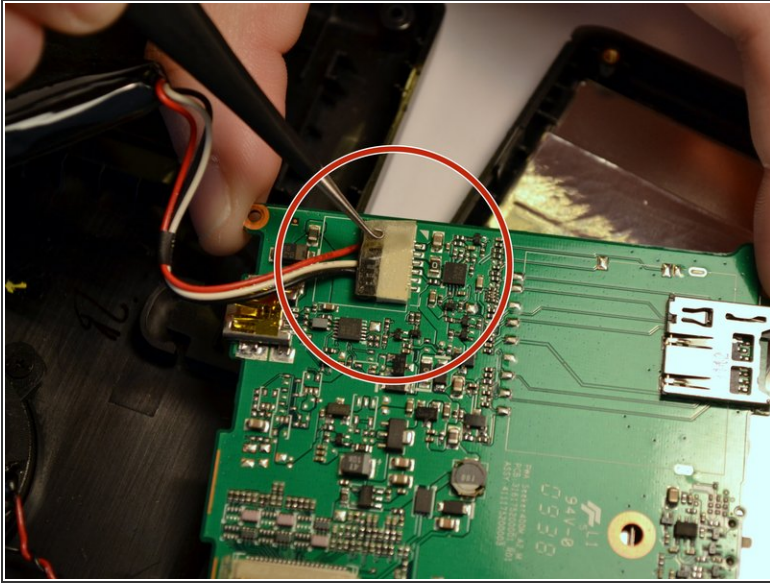
- Fully separate the two sides of the case.
- Remove the tape on the battery wires and the tape on the speaker wires.

Step 6 — Battery



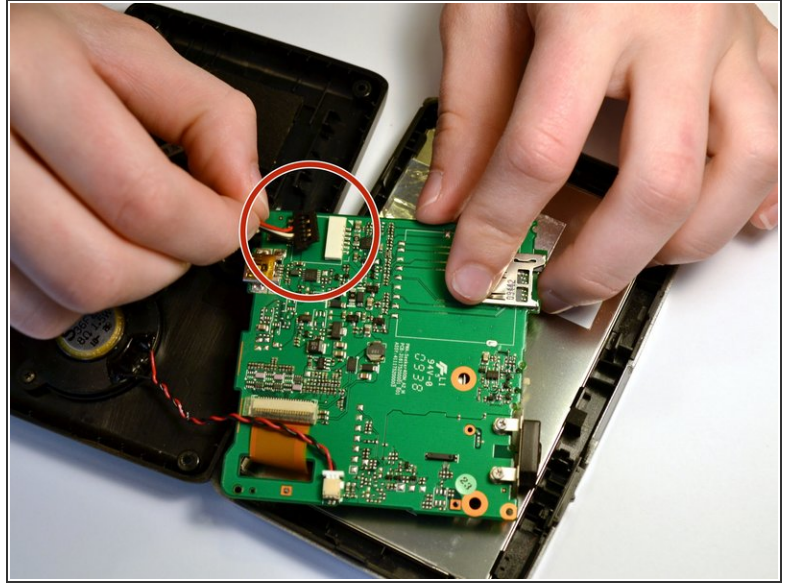
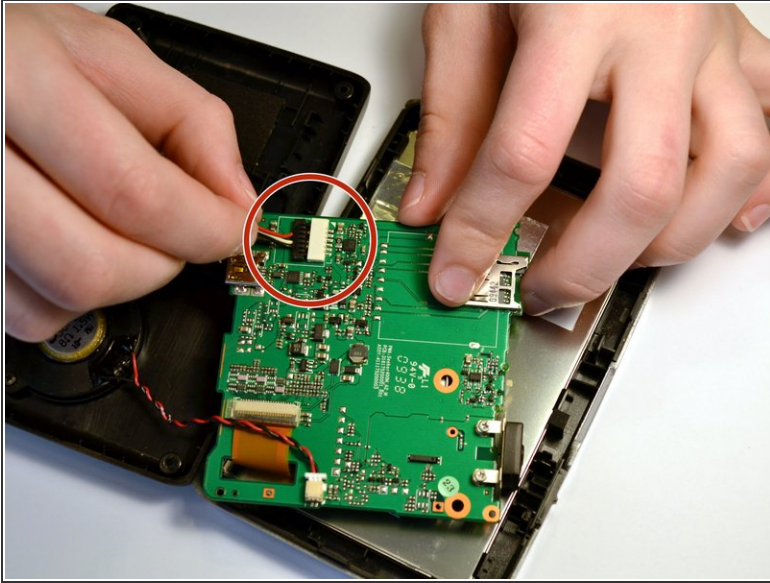
- Use the black spudger to break the seal between the adhesive and battery. Use the same spudger to continue to pry the battery from the backing
- ⓘ This may be a little tough to separate the battery and the adhesive

Step 7



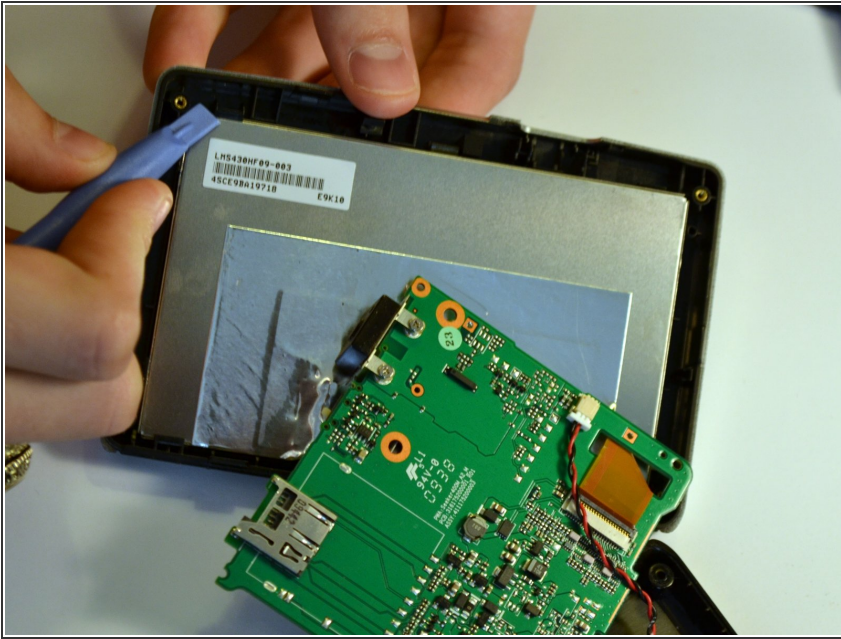
- Lift the battery from the device
- Once the battery is free from the adhesive, remove the piece of tape with a pair of tweezers that is covering the connection of the battery to the motherboard.

Step 8



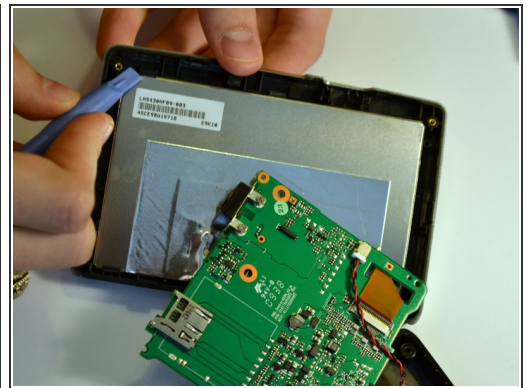
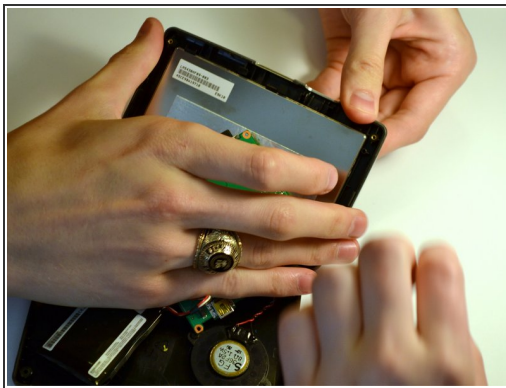
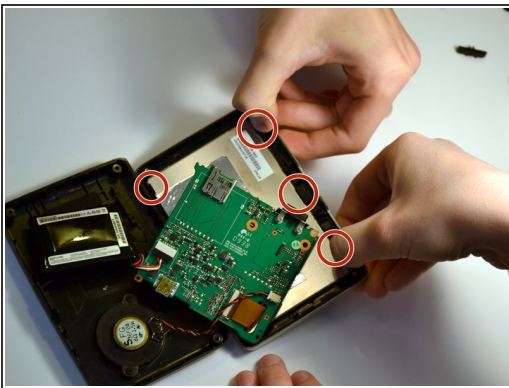
- Unplug the battery from the mother board by pulling back the clips and pulling the wires away from the motherboards receptacle
- ⚠ It is important for your and the device's safety to remove the battery before continuing with any other part removals.
- ℹ It is not necessary to separate the red and white wires from the battery. A replacement battery pack will come with similar wires already attached.

Step 9 — Screen



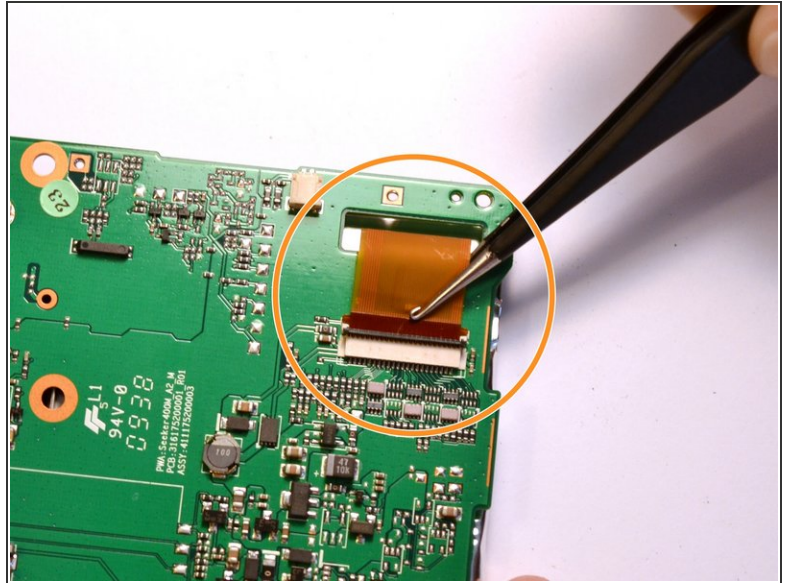
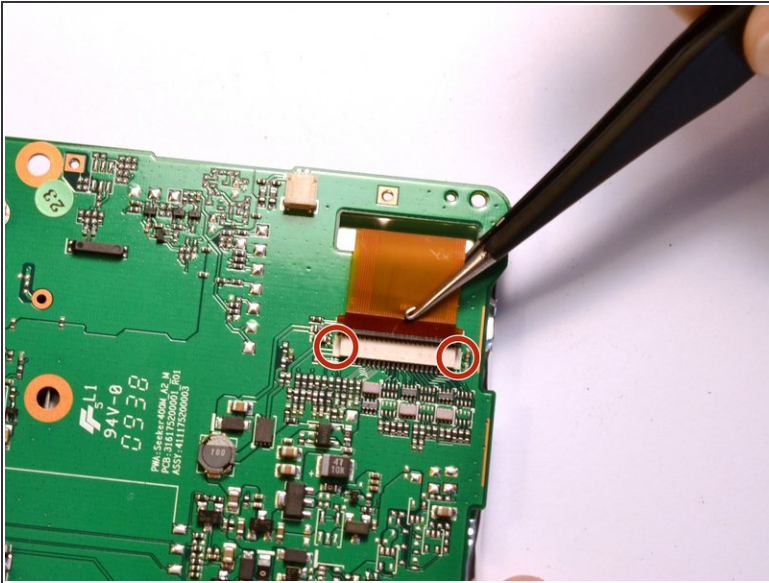
- Replace the device's screen.

Step 10



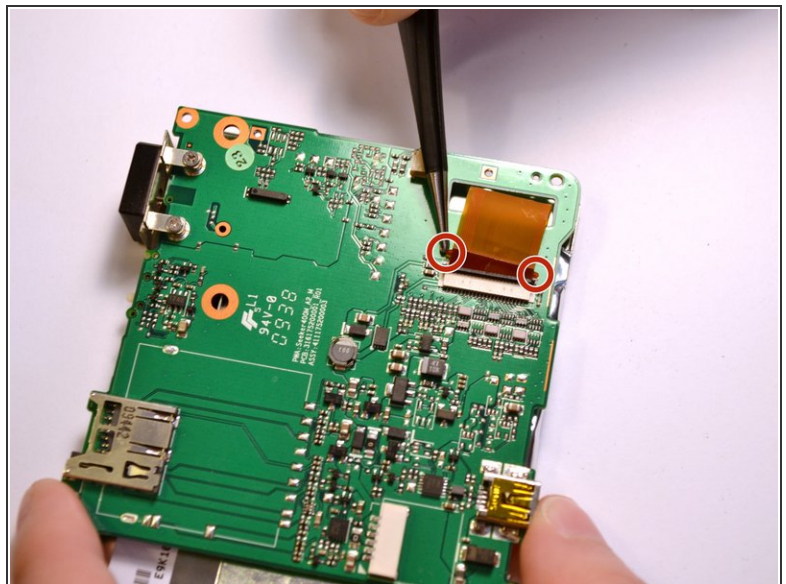
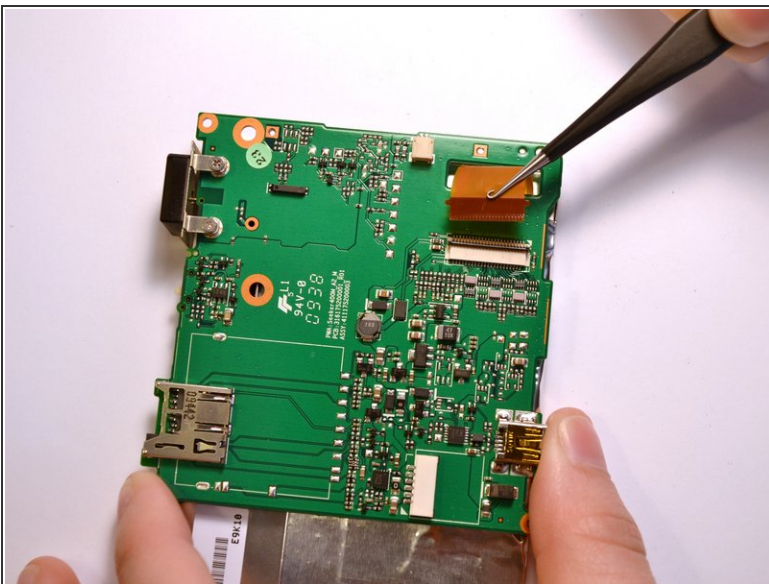
- ⓘ It may be necessary to get help from a friend to hold the device stable while removing the screen.
- Using two hands, pull back the tabs holding the screen in place.
- Use a spudger to help use leverage to remove the screen, if necessary

Step 11



- Raise the switch locking the ribbon cable in place.
- Using tweezers, pull the ribbon cable from the socket.

Step 12



- With the ribbon cable removed, the screen is completely disconnected from the device.
- To replace the ribbon cable, press the two tabs to push the head into the socket.

To reassemble your device, follow these instructions in reverse order.