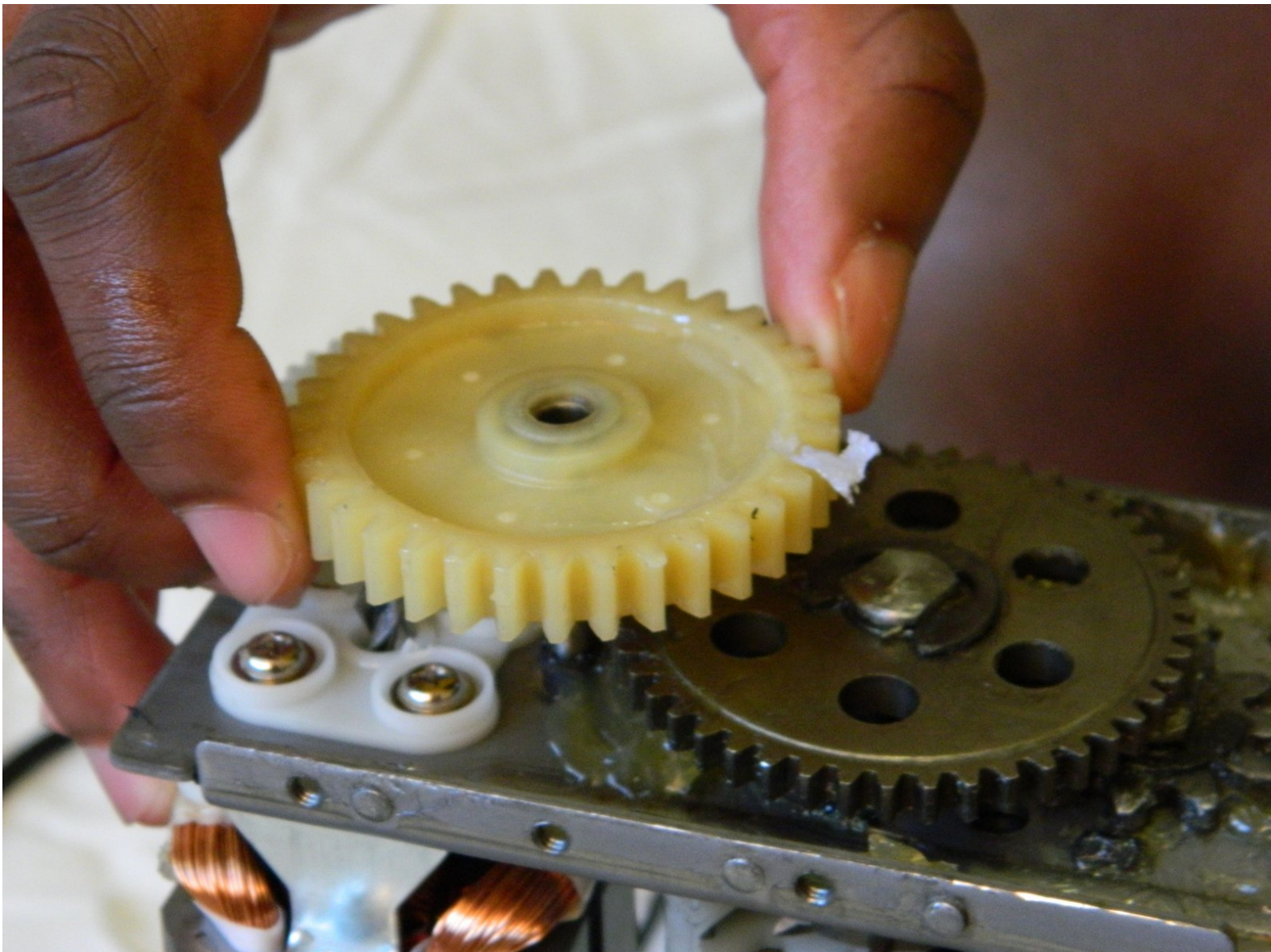




AmazonBasics B00Q3KFX8U Drive Gear Replacement

This guide will show you how to replace the drive gears on the AmazonBasics. These plastic gears are situated between the motor gear and the shredding blade gears.

Written By: William Foley



INTRODUCTION

This repair would be necessary if the plastic drive gears within the AmazonBasics stripped, meaning the teeth were either ground down or broke off. A telltale sign of this is if you can hear the motor spinning, but the shredding blades do not move.



TOOLS:

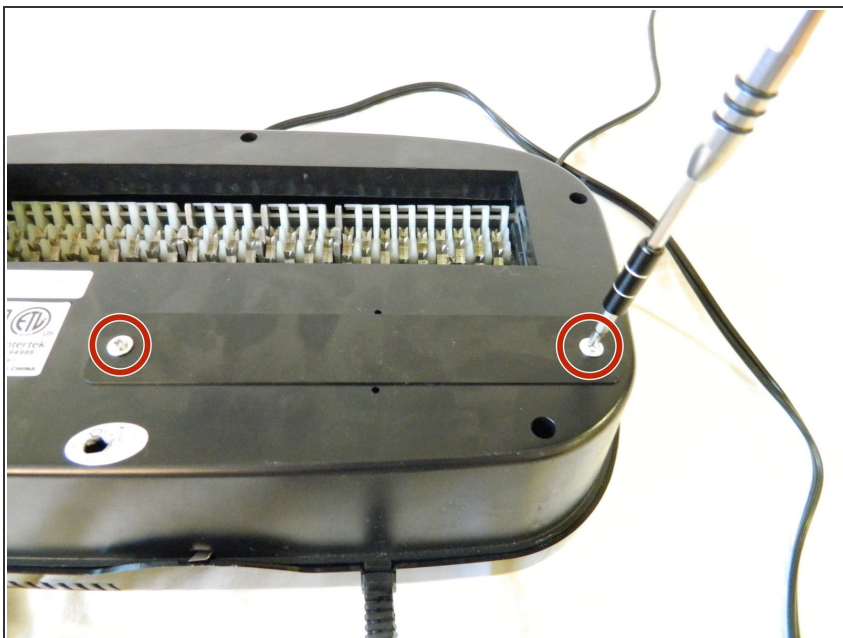
- [Phillips #2 Screwdriver](#) (1)
 - [Phillips #1 Screwdriver](#) (1)
 - [Metal Spudger](#) (1)
-

Step 1 — Drive Gear



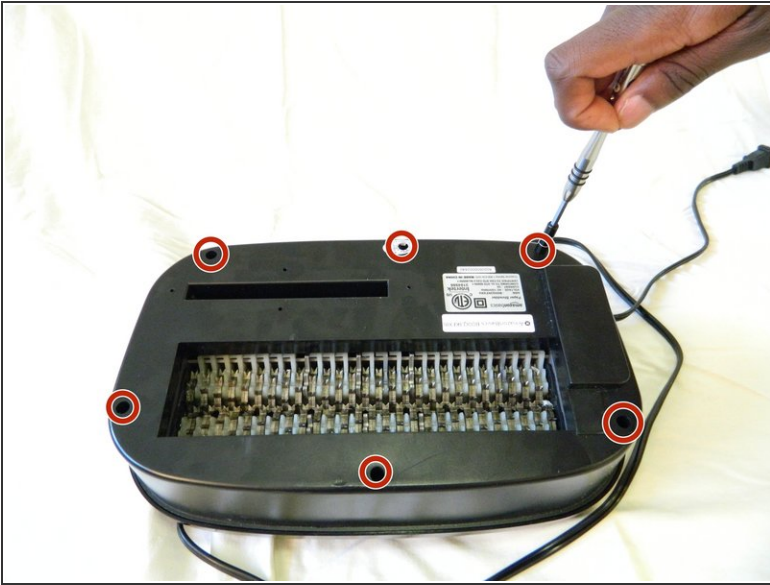
- Remove the shredder assembly from the paper scrap bin.

Step 2



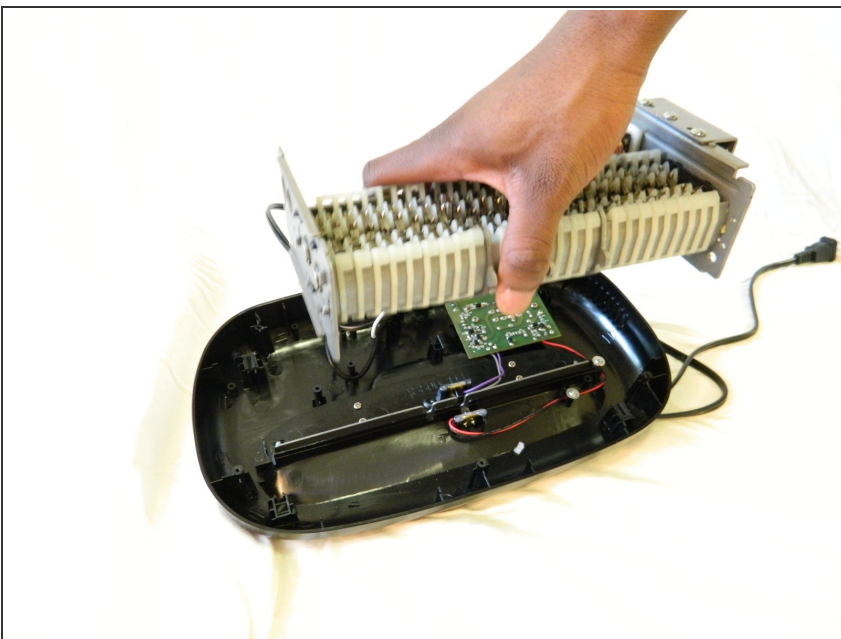
- Remove the two 10mm PH1 screws holding the small black panel in place.

Step 3



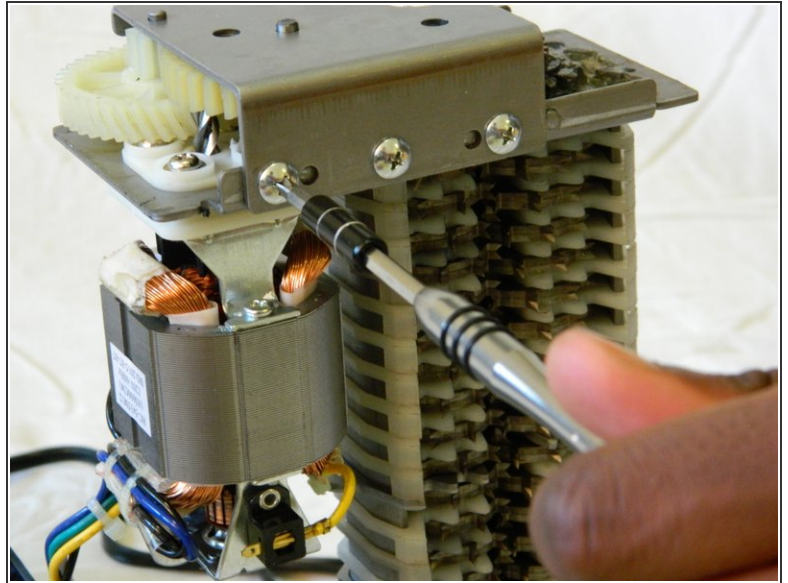
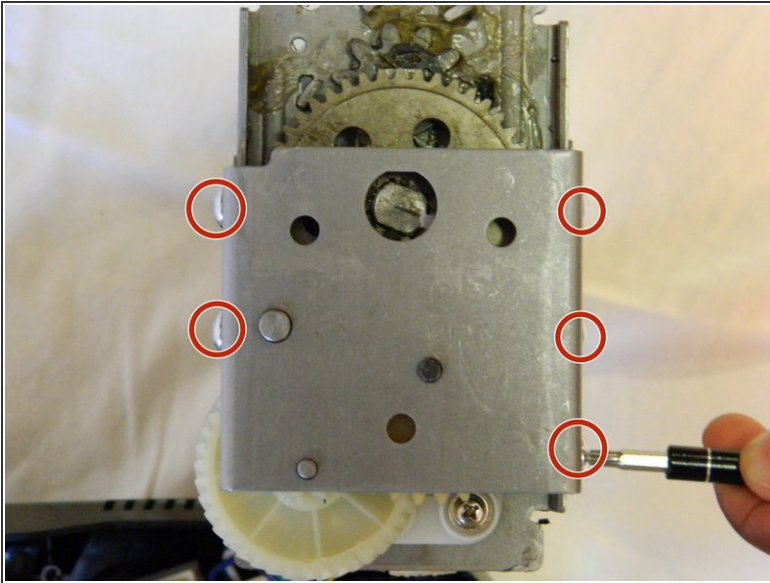
- Remove the six 14mm PH1 screws holding the bottom cover in place.
- Remove the cover by lifting straight upwards.
- ⓘ One of the screws will be hidden beneath a warranty sticker. Simply push the head of the screwdriver through the sticker to access the screw.

Step 4



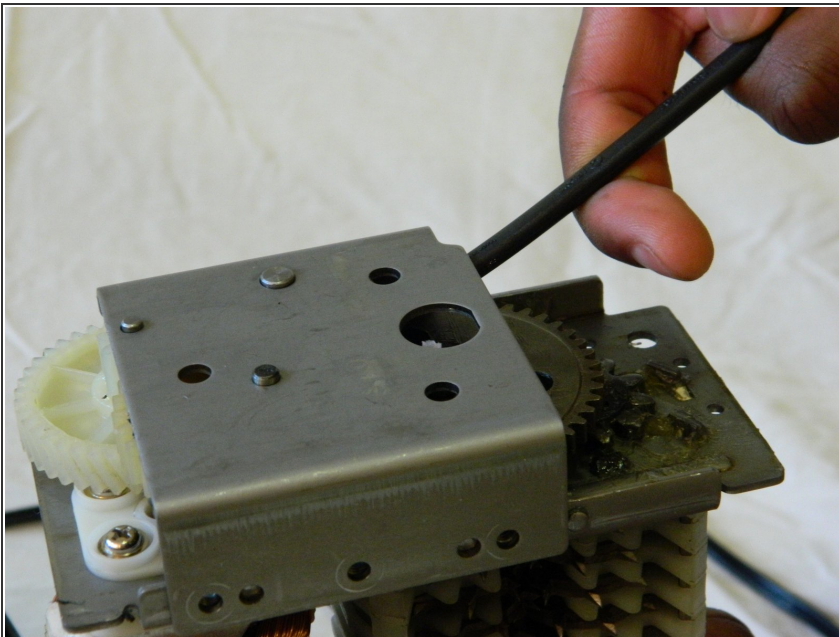
- Remove the blade/motor assembly from the top cover by lifting straight upwards. Do not disconnect any wiring just yet.
- ⚠ The blades are sharp. Coming into contact with them may result in injury.

Step 5



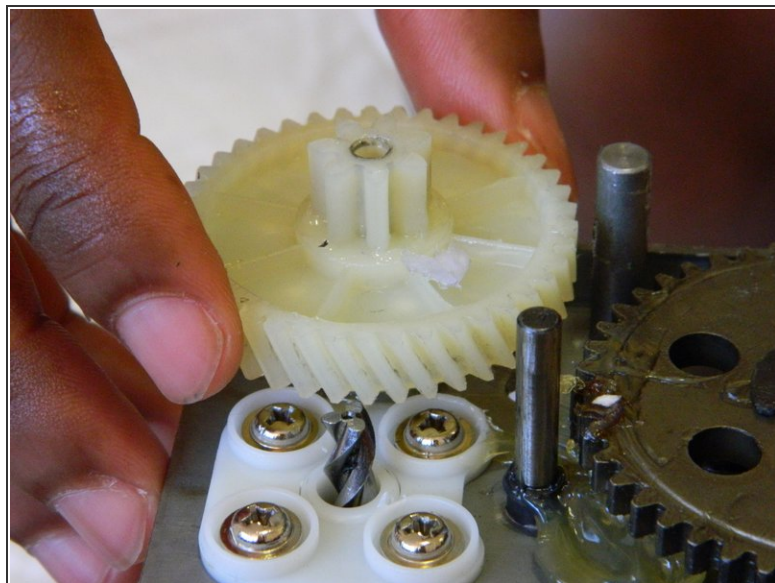
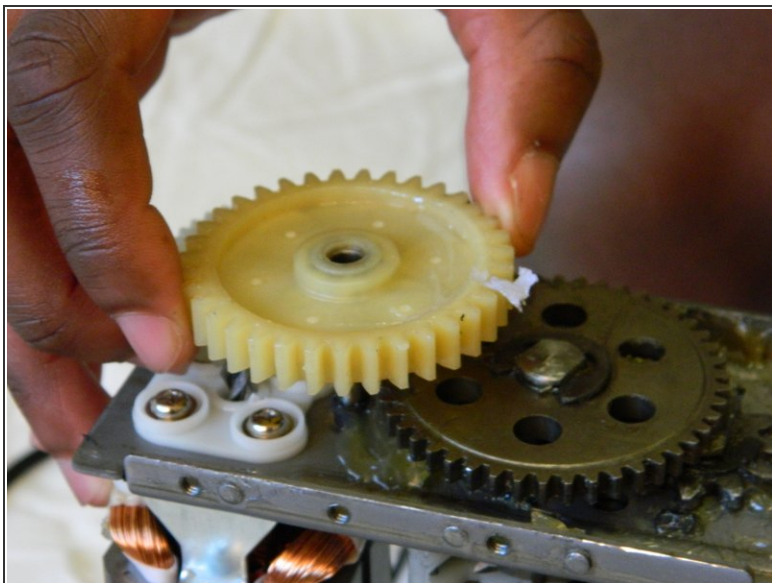
- Remove the five 8mm PH2 screws from the bracket holding the gears in place.

Step 6



- Use a metal spudger to pry the bracket from the main shredder assembly.
- ⓘ If the bracket is attached too tightly for the spudger, carefully use a metal screwdriver to pry it loose.

Step 7



- Remove the two plastic drive gears from the shredder assembly by lifting straight upwards.

To reassemble your device, follow these instructions in reverse order.