



# HP w2216h Screen Replacement

This guide will show you how to remove the screen in order to replace it or to access the other components.

Written By: Jessica Carreiro



## INTRODUCTION

Is your image flickering, shattered or discolored ? Replacing your screen could solve these problems. Always uses caution when working with glass, a scratch or slight fall could completely ruin a screen.

---

### TOOLS:

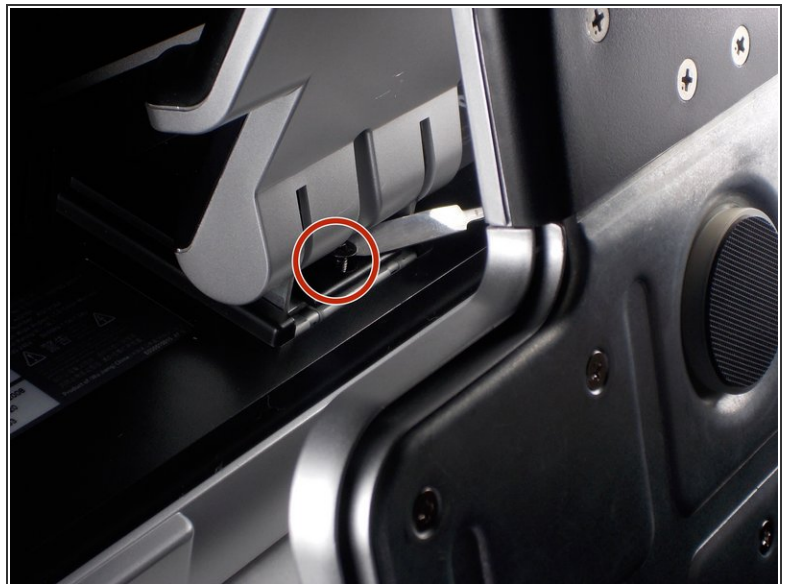
- [Metal Spudger](#) (1)
  - [Safety Glasses](#) (1)
  - [Anti-Static Wrist Strap](#) (1)
  - [Phillips #1 Screwdriver](#) (1)
  - [Phillips #000 Screwdriver](#) (1)
-

## Step 1 — Screen



- ⚠ 'Make sure you are grounded, the power supply is not connected and you are wearing safety goggles.
- Use the Philips #000 screwdriver to remove the 4 round 12mm screws on the back panel.

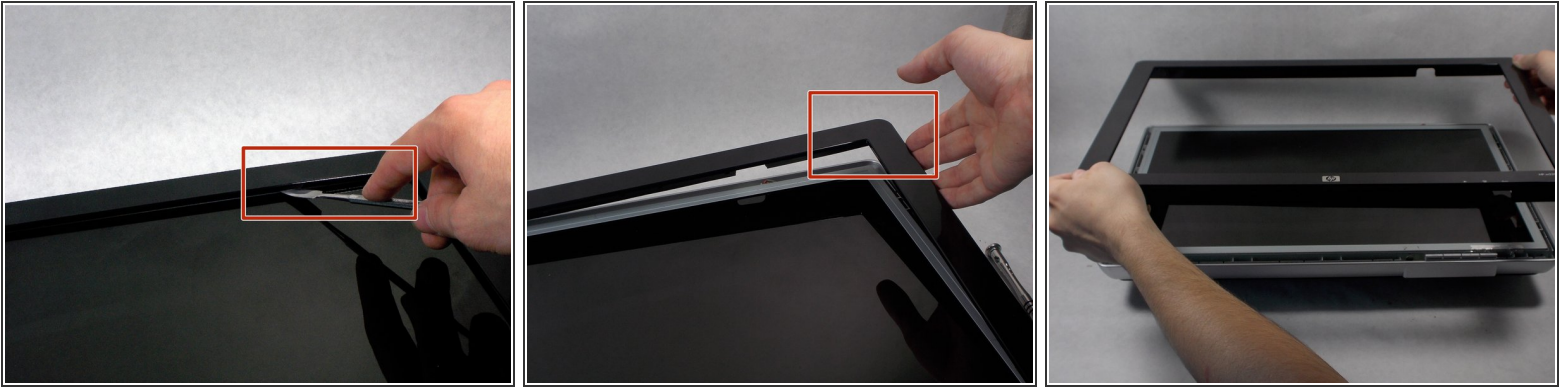
## Step 2





- Using a Philips #000 head remove 2 flat 12 mm screws above stand mounting bracket.
- Using a PH1 Philips head with the 150 mm flexible extension remove 1 Philips head screw under the stand mounting bracket.
- Stand will easily pull off.

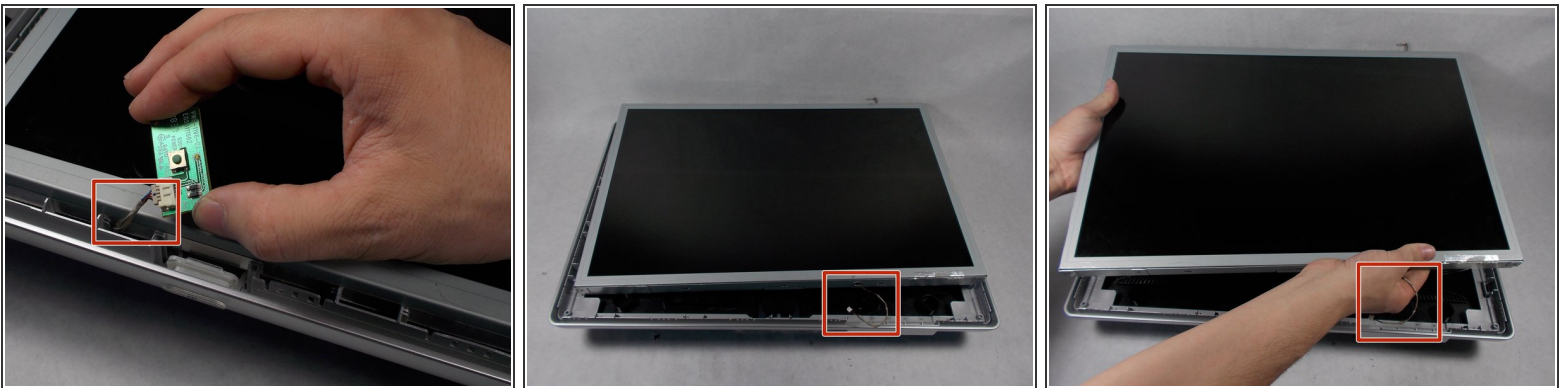
This document was generated on 2020-11-21 05:07:18 AM (MST).


### Step 3



-  Do not put the metal spudger between the metal and the glass. It needs to go under the bezel and above the metal.
- Turn monitor so that the screen is facing you.
  - Pry the black bezel from above the metal by placing your metal spudger between the bezel and the metal and twisting the tool slightly.
-  The best places to pry are in the lower left and lower right corners of the black bezel.

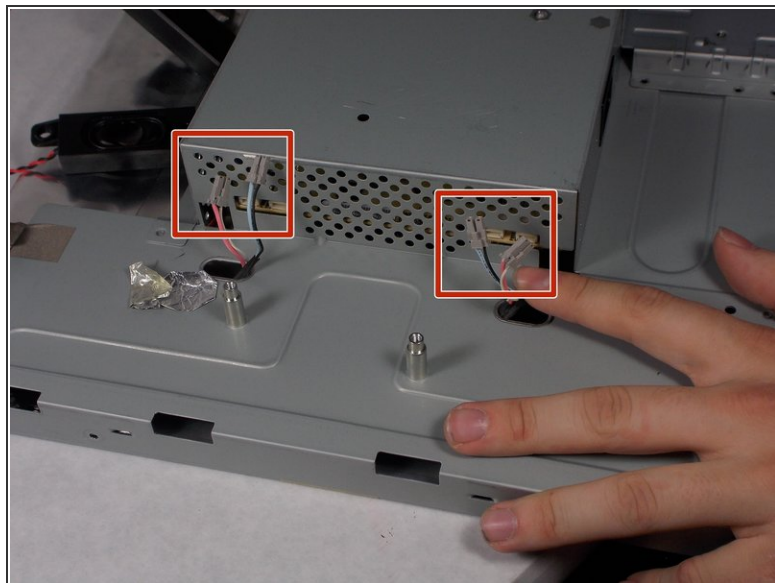
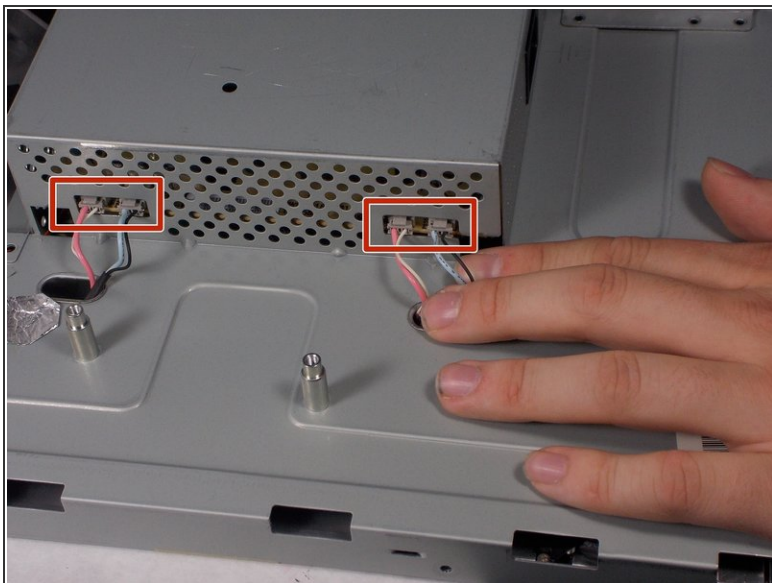
### Step 4



-  Be careful of the wires attaching the power button and the control buttons. Show extreme caution to ensure the button is not damaged.
- Lift the screen assembly from the plastic housing from the corners.

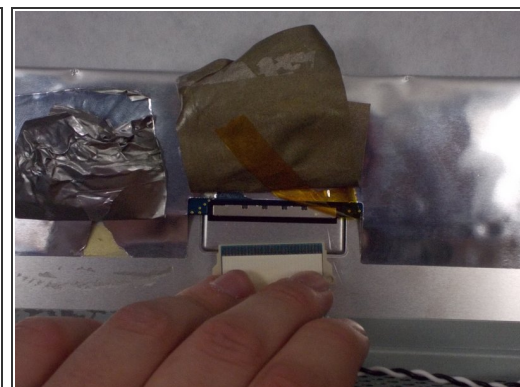
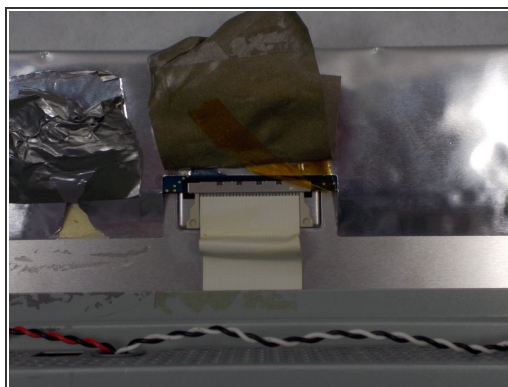


## Step 5



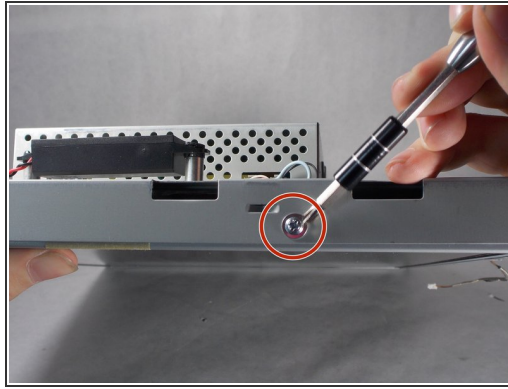
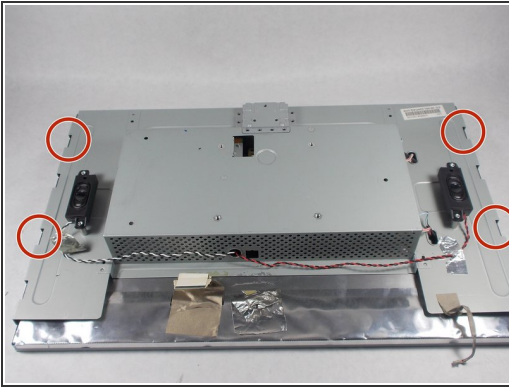
- Remove the 4 connectors from the left side of the monitor on the back.

## Step 6



- Lift the gray tape of the top of the monitor to expose the ribbon cable.
- Remove the ribbon cable by sliding the connector towards the center of the screen assembly.
- Lift the reflective tape next to the gray tape.

## Step 7



- Remove the 4 PH1 8mm Philips round screws on the outer edge of the screen's assembly.
- Lift the screen from the screen assembly.

To reassemble your device, follow these instructions in reverse order.