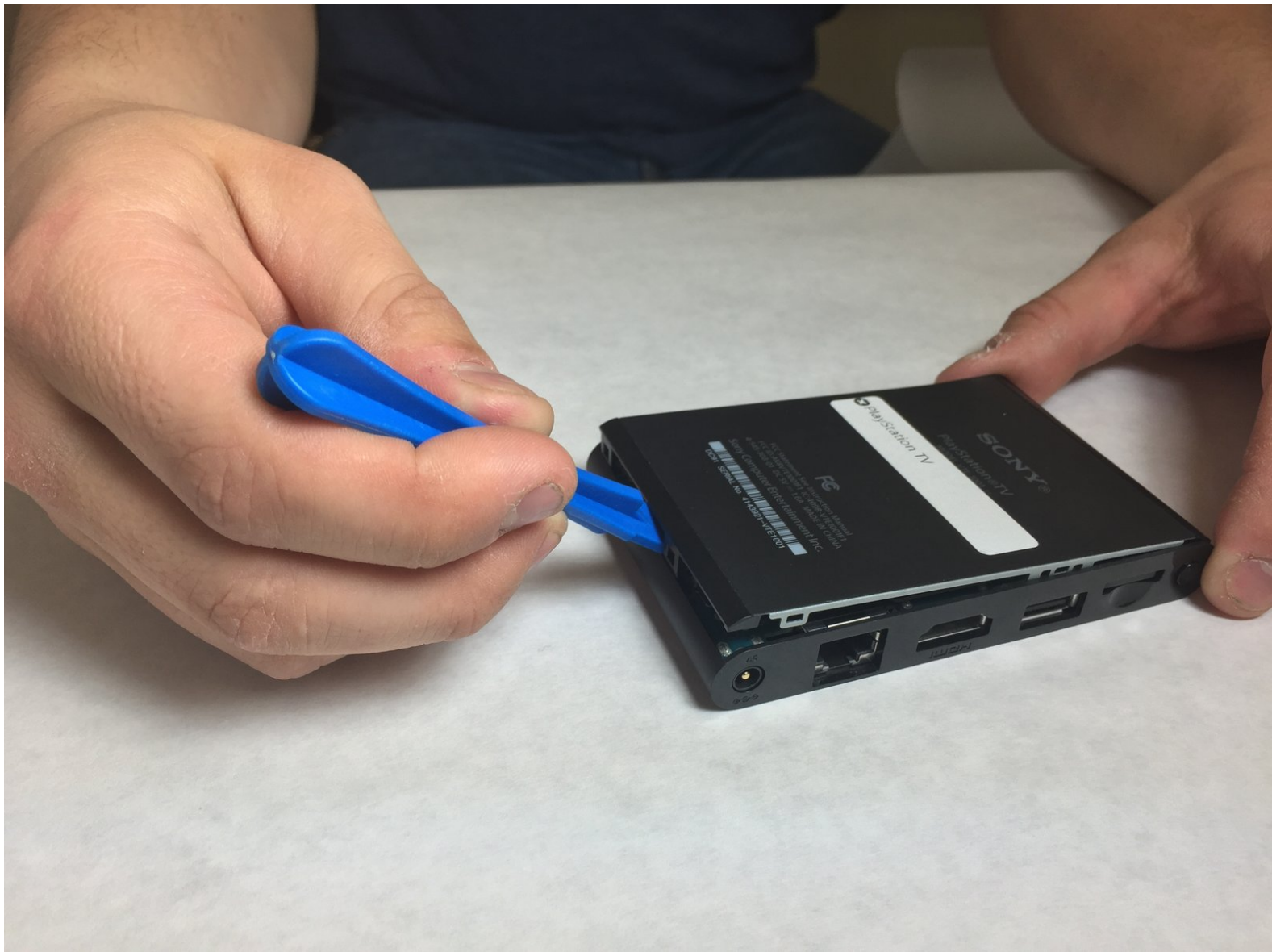




# Playstation TV Motherboard Replacement

This guide will show how to replace the motherboard in the Playstation TV.

Written By: Nick Dixon



# INTRODUCTION

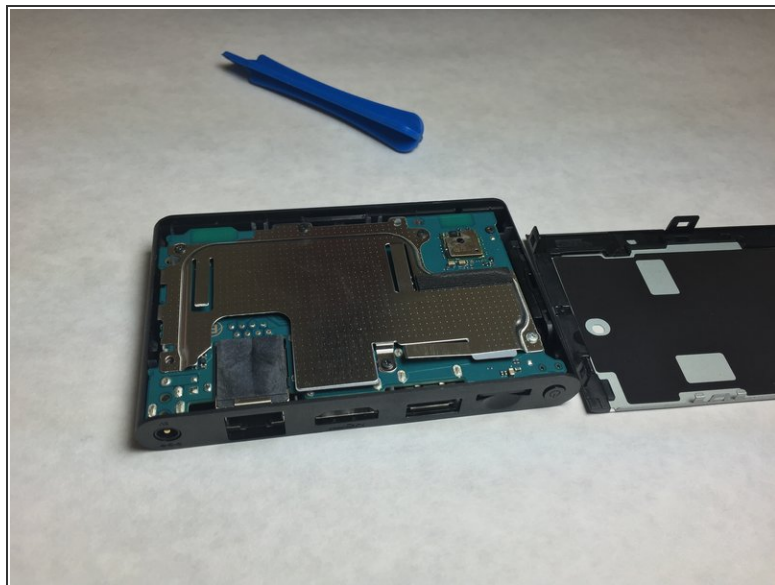
This guide will show how to replace the motherboard in the Playstation TV.



## TOOLS:

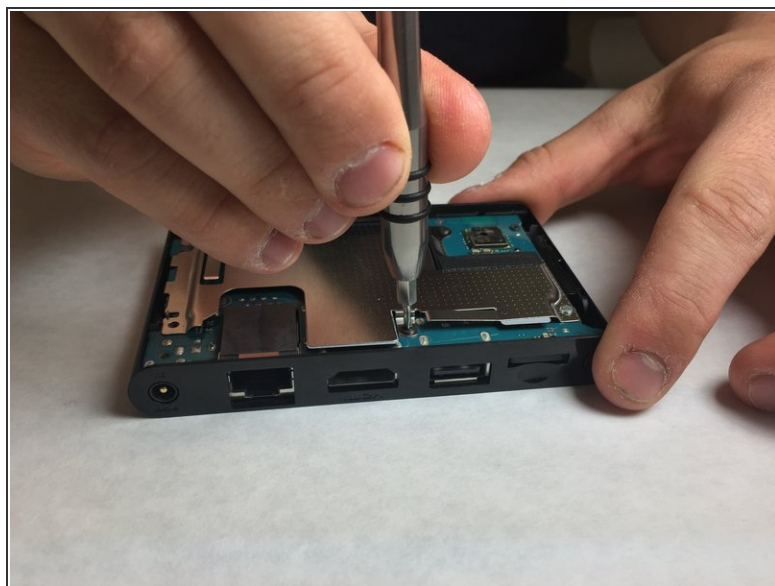
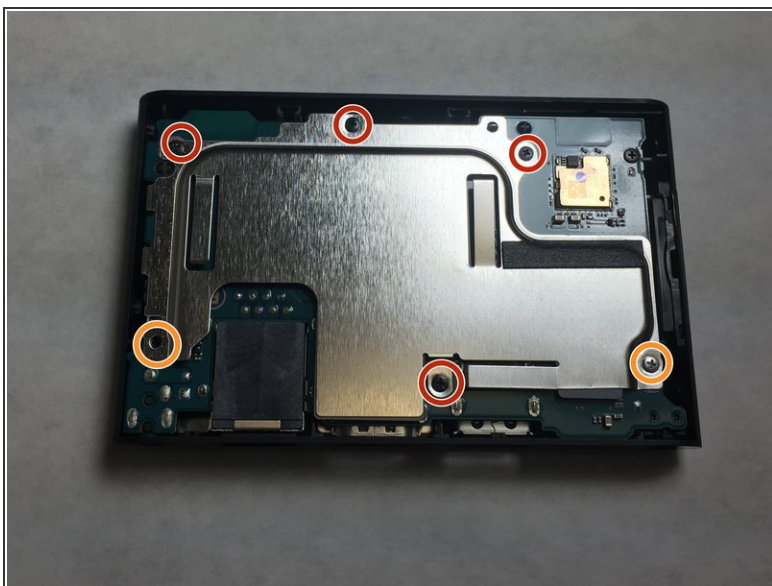
- [Spudger](#) (1)
  - [Phillips #0 Screwdriver](#) (1)
  - [iFixit Opening Tools](#) (1)
-

## Step 1 — Motherboard



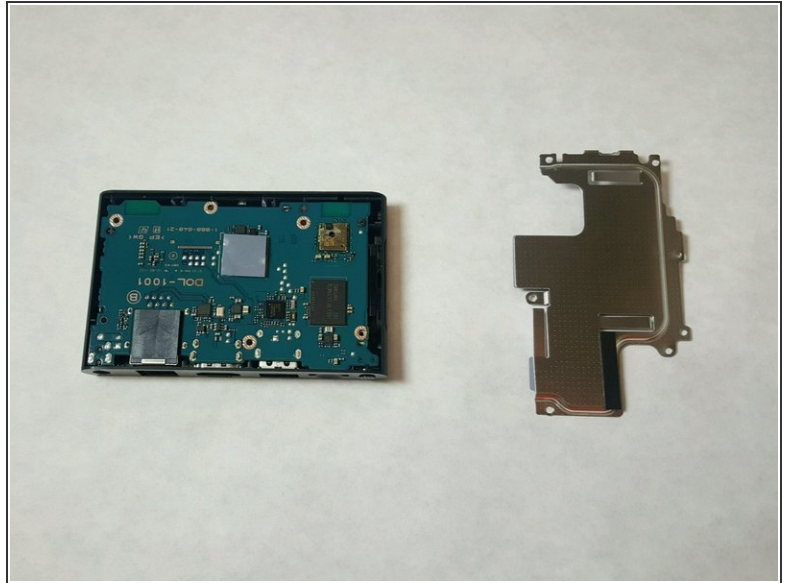
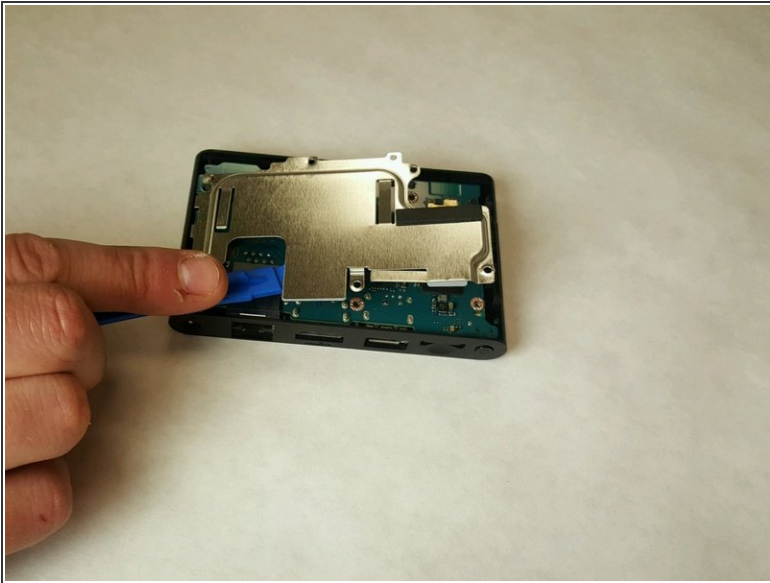
- Use the plastic spudger to pry up the bottom piece of the case to release the clips.

## Step 2



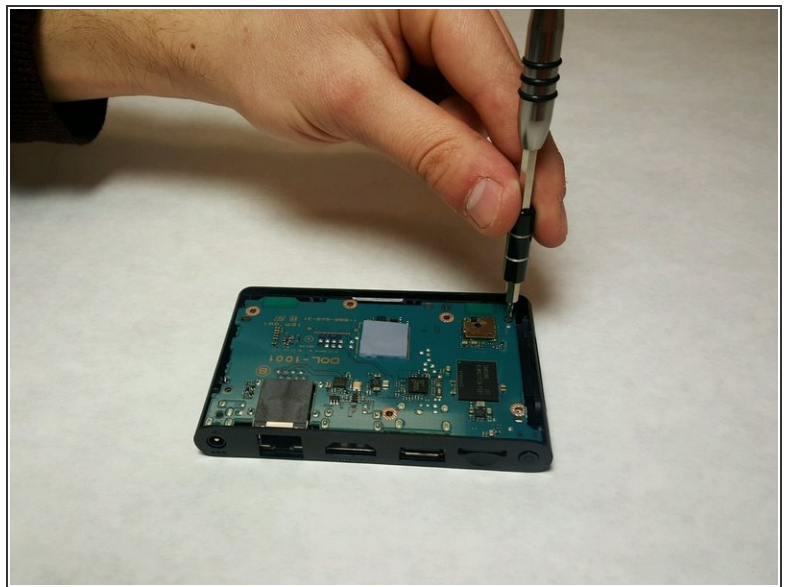
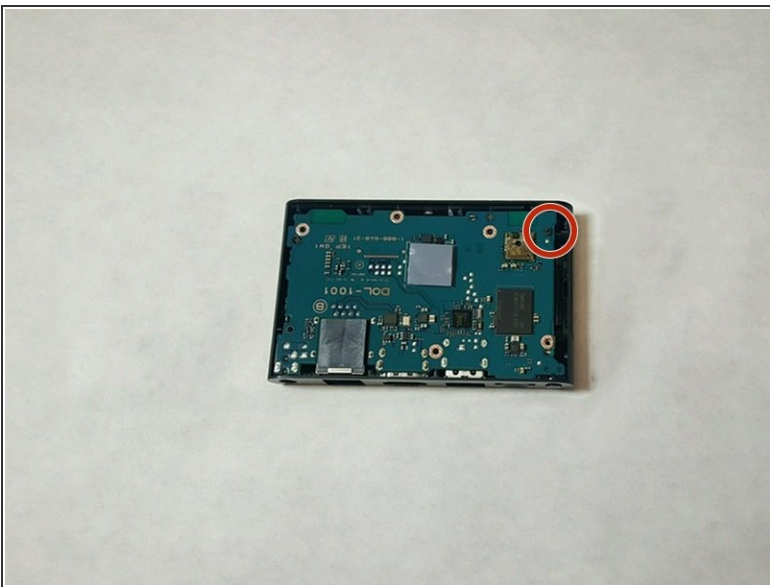
- Remove the four 6 mm Phillips screws.
- Remove the two Phillips #0 screws.

### Step 3



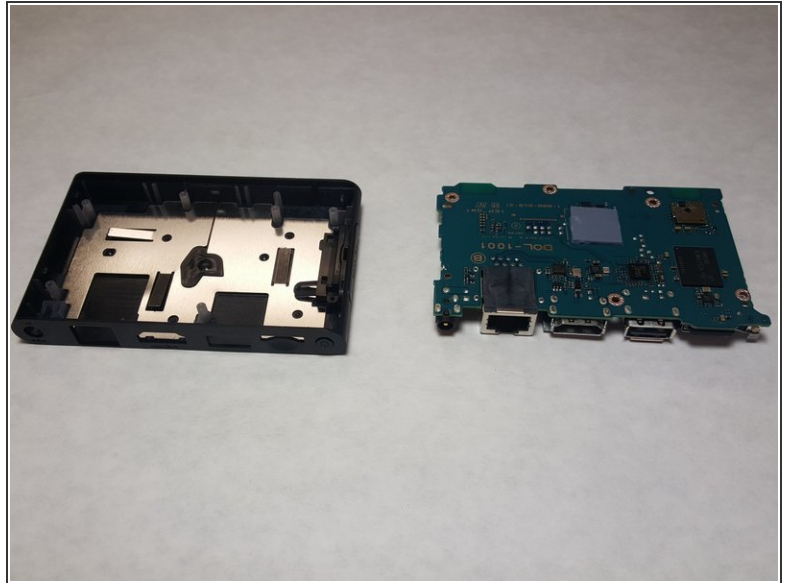
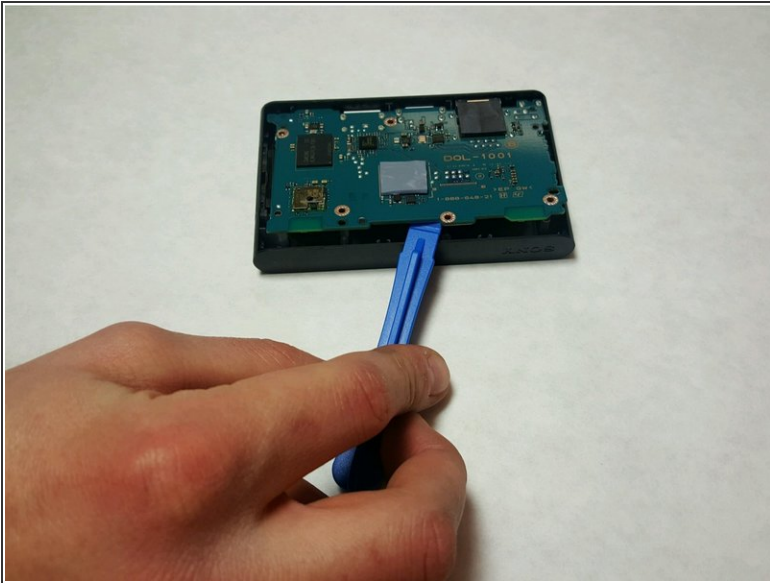
- Remove the heat shield using the plastic opening tool.
- Slide the tool around the edges until the shield is free.

### Step 4



- Remove the last 6mm Phillips #0 screw from the motherboard.

## Step 5



- Use a plastic opening tool to pry up gently on the motherboard, and remove it.

To reassemble your device, follow these instructions in reverse order.