



Sony SRS-X7 Bluetooth Chip Replacement

This guide is used to replace the bluetooth chip in your device.

Written By: Tyler Lamar



INTRODUCTION

Follow this guide in order to uninstall the bluetooth chip in your device, the follow it in reverse order to install the new one.

The bluetooth chip is necessary for you to be able to access to bluetooth capability of your device. Bluetooth allows you to connect to other devices wirelessly and without it, these devices cannot connect.



TOOLS:

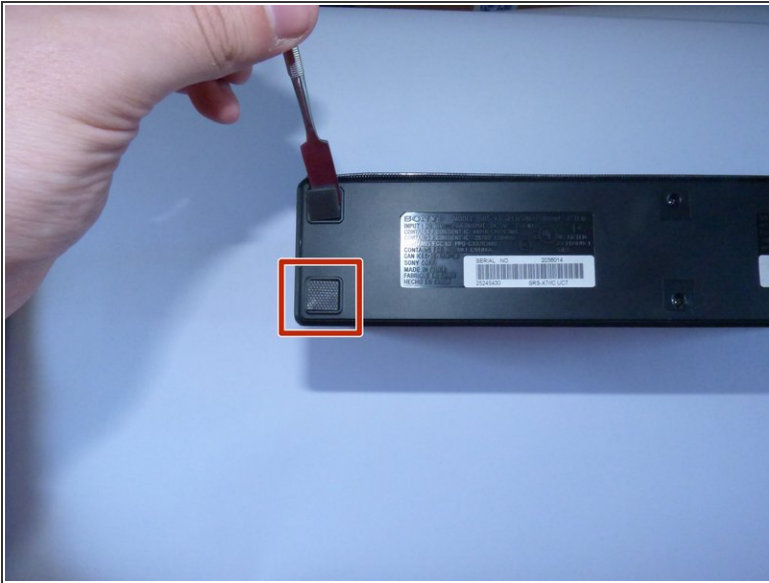
- [Pro Tech Toolkit](#) (1)



PARTS:

- [Sony SRS-X7 Bluetooth Chip](#) (1)


Step 1 — Sony SRS-X7 Faceplate Disassembly




- On the bottom of the device, you'll see 4 rubber pieces at the corners. Peel off these rubber pieces.
- Unscrew the 4 10mm Philips J1 screws beneath them.

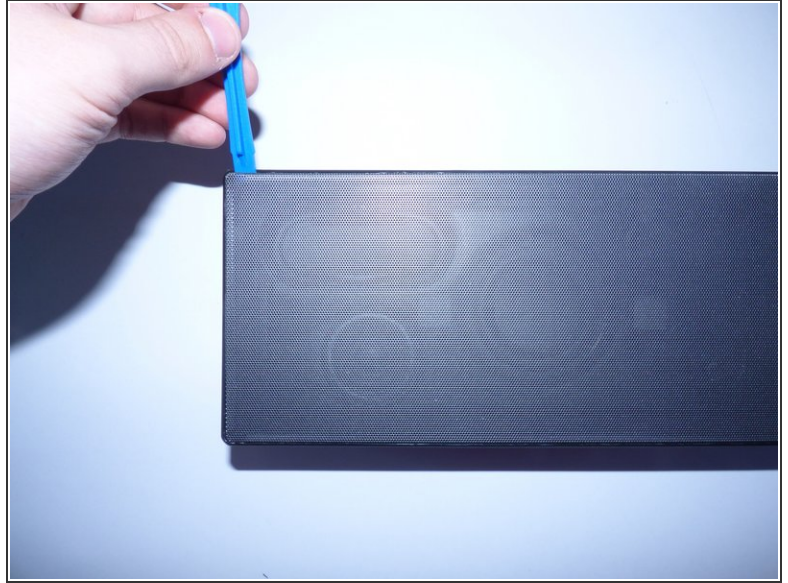
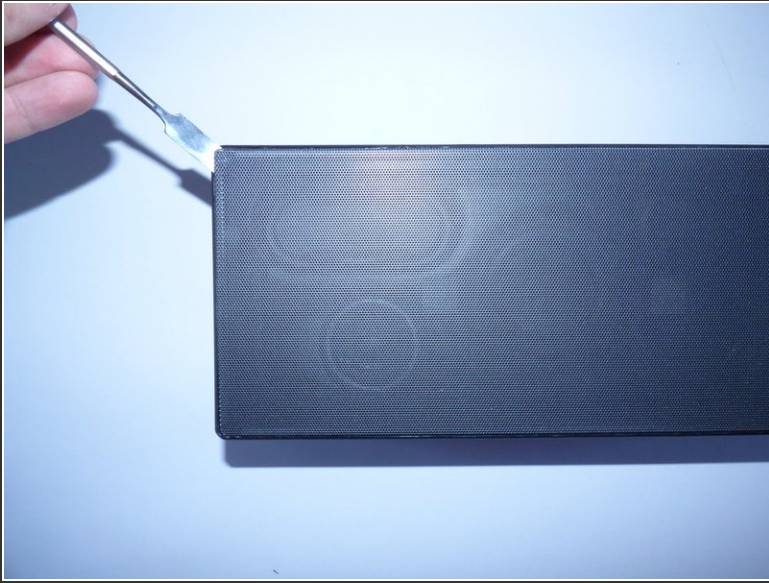
Step 2



 The black stickers between the 4 foam pieces are there to protect the unit's warranty. If you try to send the device back to Sony after poking through said stickers, they will not accept it as the device has been tampered with.

- Poke through said stickers and unscrew the 2 10mm Philips J1 screws beneath those.
 - Insert the blue plastic tool into the corner of the bottom faceplate and slide along the edge.
-  It will be a bit difficult as there is adhesive holding the faceplate to the unit, but with a bit of playing it should come off with ease.

Step 3



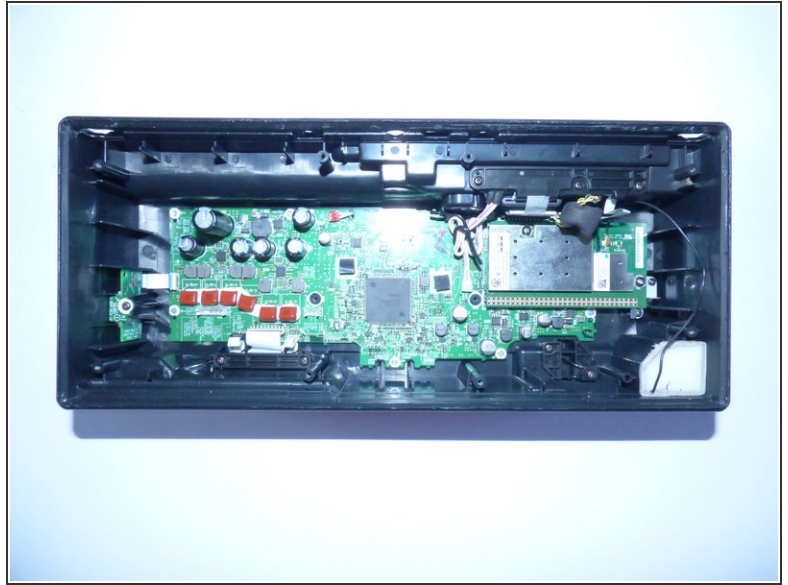
- Using a metal spudger, insert it into one of the corners or sides of the unit's faceplate and lightly pry open.
- While pried, insert a plastic opening tool and slide along the edges of the unit.
- Repeat the last step on each side of the unit's faceplate, until the faceplate is off.
- ⓘ The first time you attempt to take the faceplate off of the speaker, it will be difficult because there is adhesive holding it to the unit. After this time, disassembly and reassembly should be easier.

Step 4



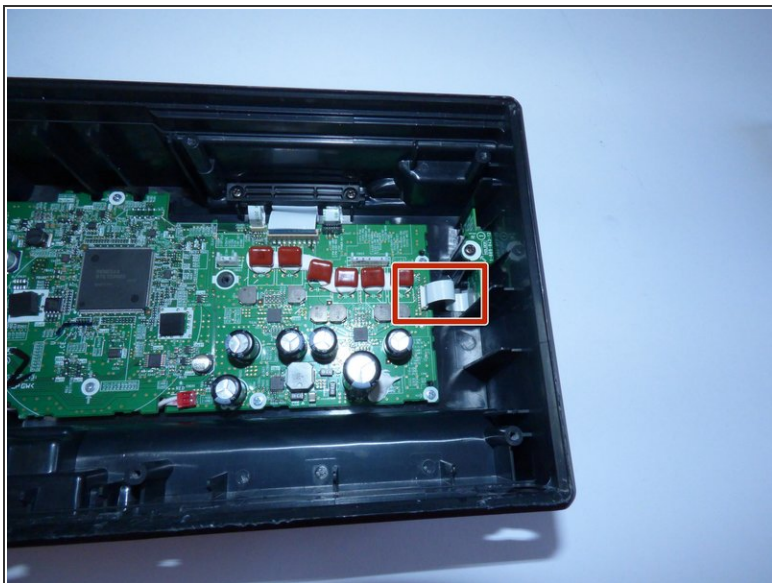
- With the faceplate now off, the speakers should be revealed. There should be 8 visible screws around the border of the speakers. Remove the 8 10mm Philips J1 screws.
- Take the 2 20mm Philips J1 screws out of the middle of the speaker as shown.

Step 5



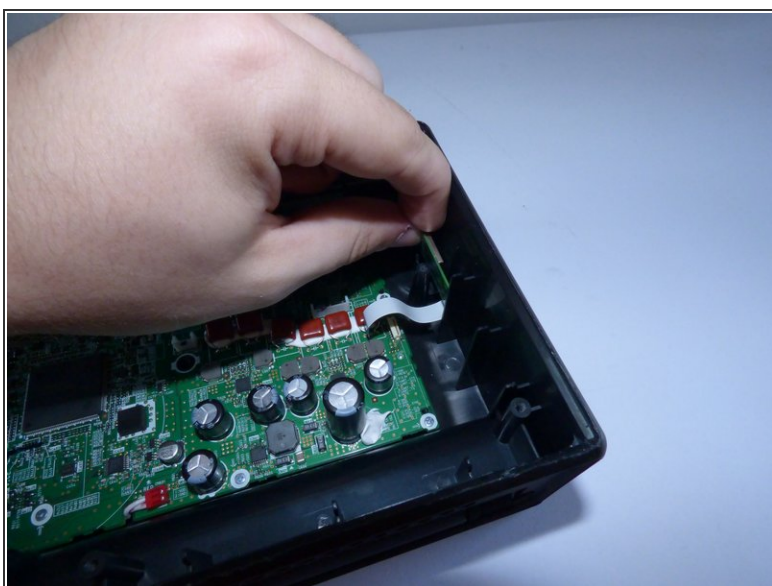
- ⓘ The speaker should come out of the unit with ease, however you should use caution as it is still connected to the motherboard.
- Take the whole speaker out, and disconnect the connectors from the motherboard by lightly pulling on them.

Step 6 — Bluetooth Chip



- Using your fingers, lightly pull on the white connector shown in the photo.
- Unscrew the 10mm Philips J1 Screw from the guard above the bluetooth chip.

Step 7



- Remove the bluetooth chip from the inside of the device.
- Plug the new bluetooth chip into the motherboard and reassemble the device,

