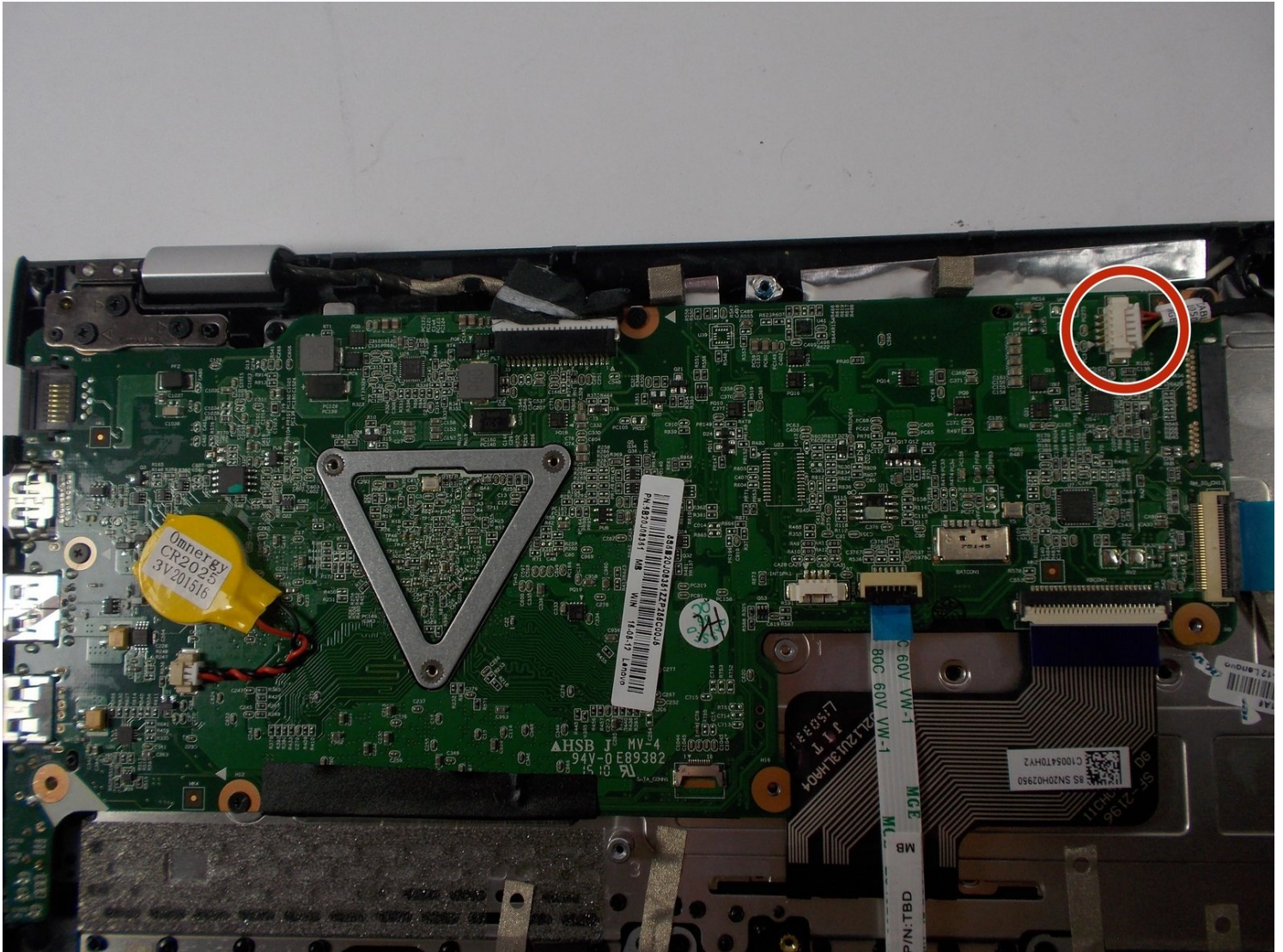




Lenovo Flex 3-1120 Motherboard Replacement

This guide will show you how to remove the...

Written By: patrick drew



INTRODUCTION

This guide will show you how to remove the motherboard. Removal of the motherboard is necessary in order to replace the thermal compound on the processor. Prerequisite only.

TOOLS:

[Phillips #0 Screwdriver](#) (1)

[iFixit Opening Tool](#) (1)

Step 1 — Bottom Panel



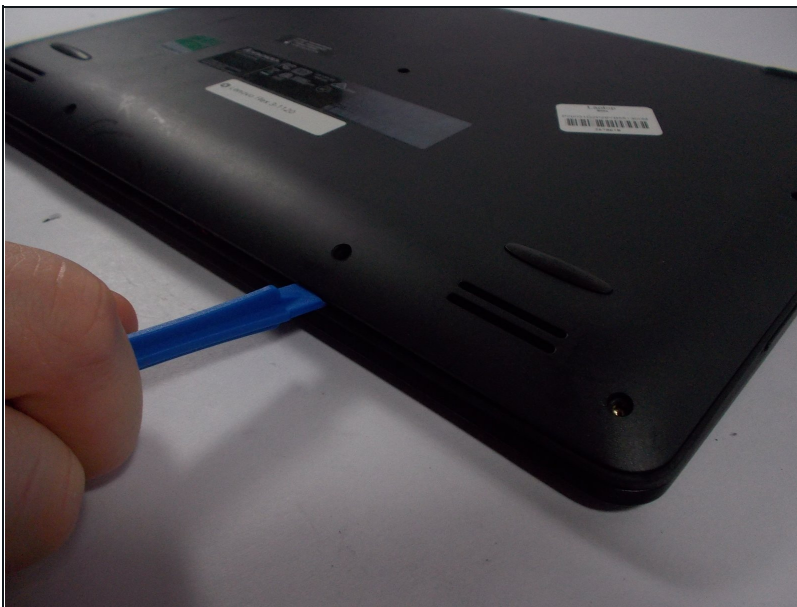
- Lay the computer down with the bottom panel facing up.

Step 2



- Locate the ten 6mm Phillips screws along the edges and in the center of the back panel.
- Remove all ten 6mm Phillips screws with a size 0 Phillips screwdriver.

Step 3



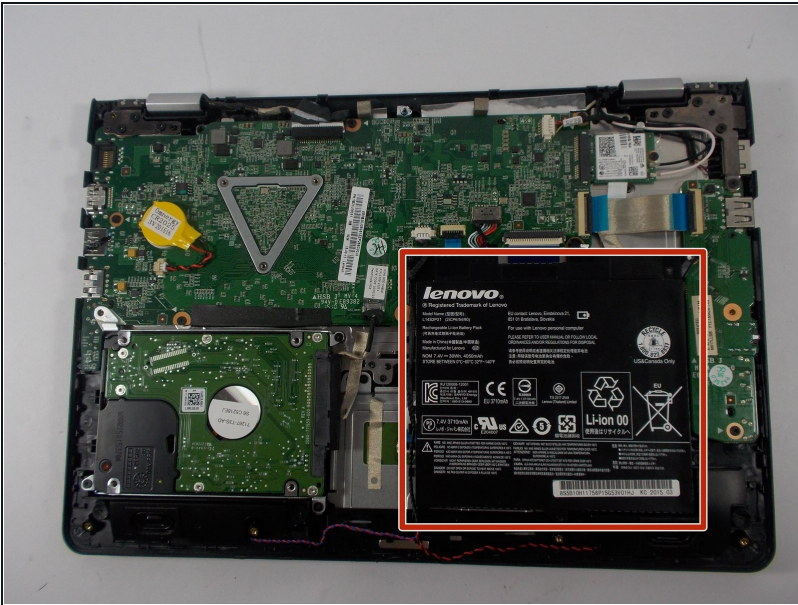
- Wedge the plastic opening tool into the small space under the back panel.
 - Use the plastic opening tool as a lever to separate the bottom panel from the computer.
 - Slide the tool along the edges of the computer until the bottom panel is completely separated.
- i* You may start prying the bottom panel on any edge.

Step 4



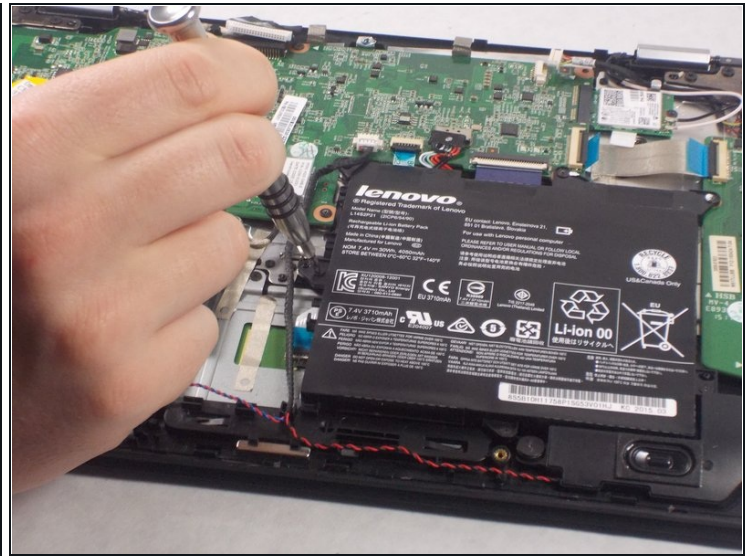
- Lift the bottom panel off of the computer.

Step 5 — Battery



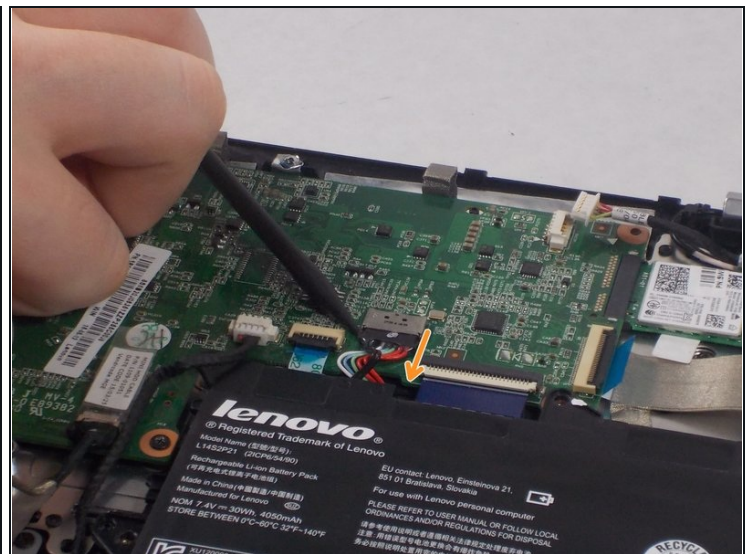
- Locate the black battery on the bottom right of the computer.

Step 6



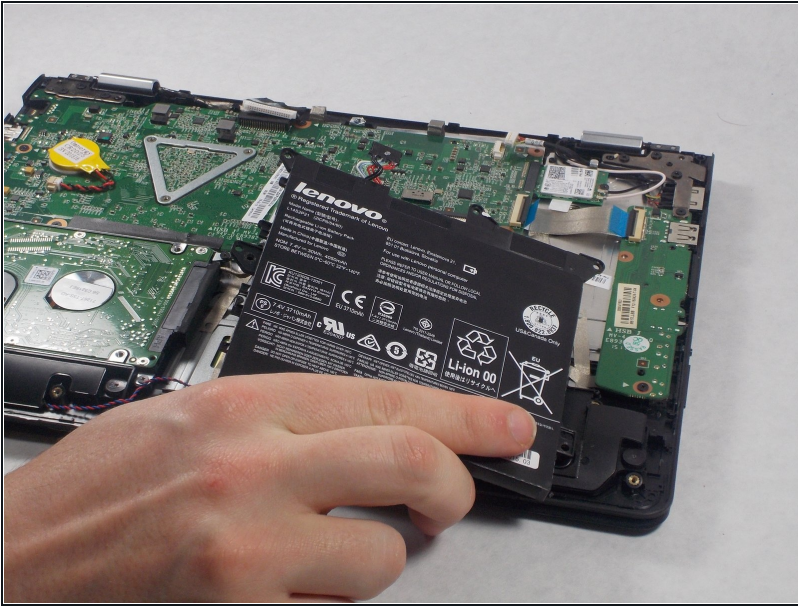
- Locate the six 3.5mm Phillips head screws along the edges of the battery.
- Remove all six of the screws using a size 0 Phillips screwdriver.

Step 7



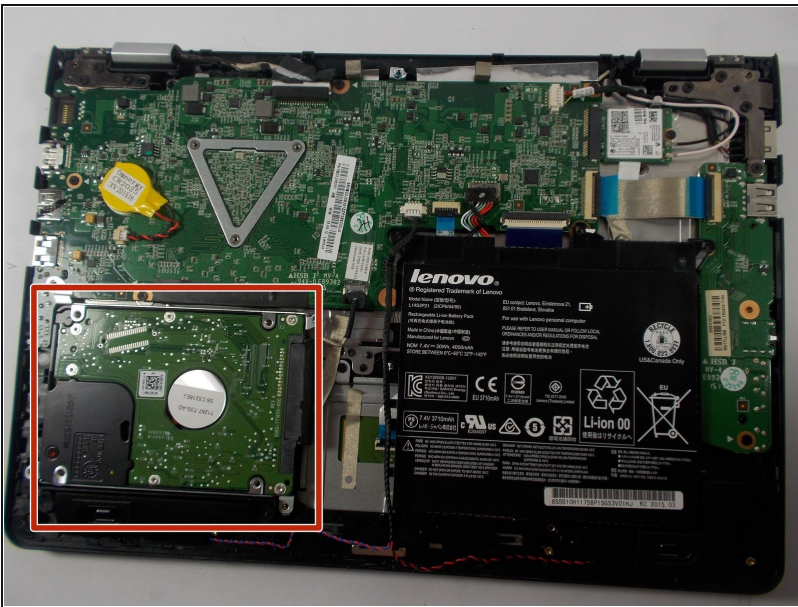
- Locate the multicolored power cables coming directly from the top of the battery and into the motherboard.
- Use a spudger to slide the power cables down and away from its port on the motherboard.

Step 8



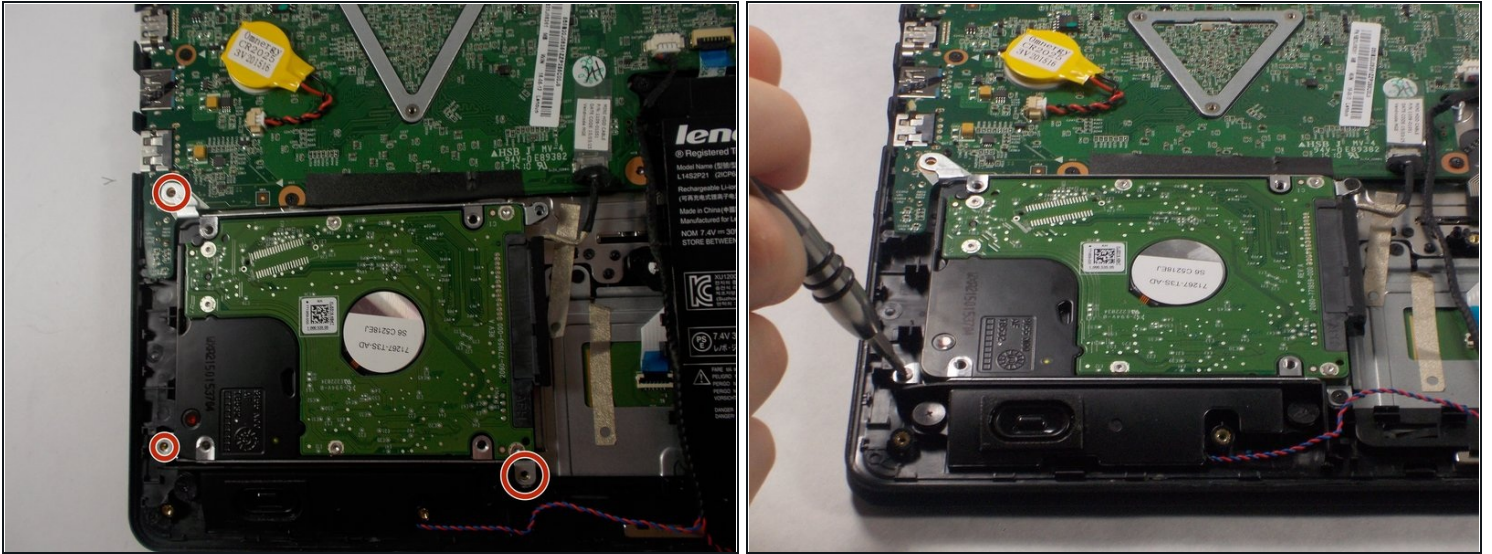
- Lift the battery out from the computer.

Step 9 — Hard Drive



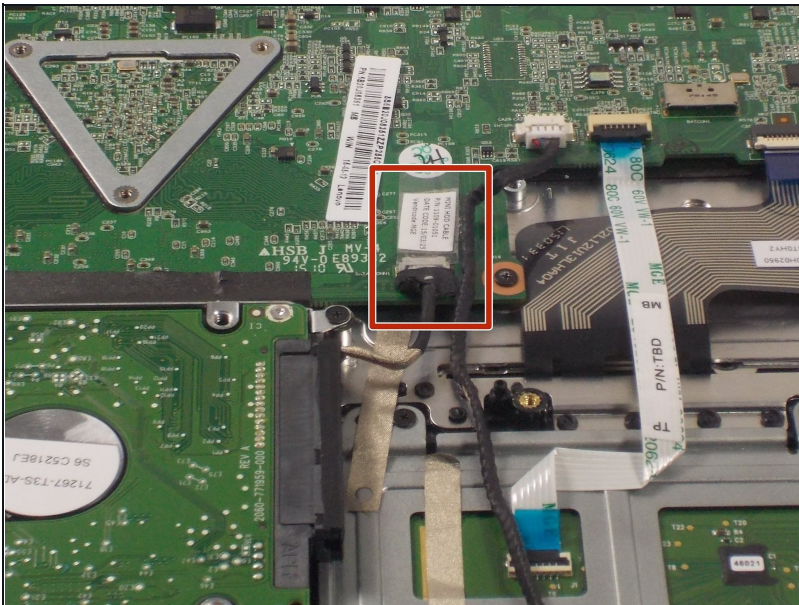
- Locate the hard drive in the bottom left of your computer.

Step 10



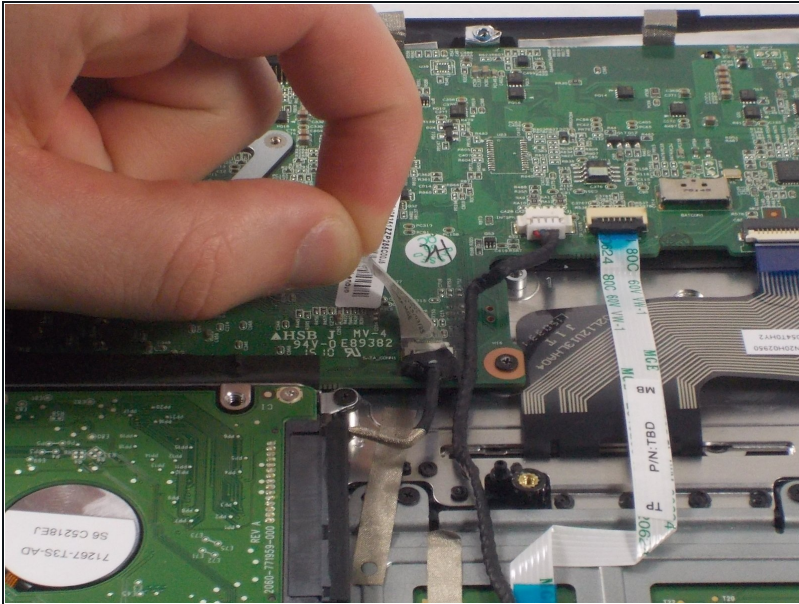
- Locate the three 3.5mm Phillips screws on the corners of the hard drive.
- Remove the three screws with a size 0 Phillips screwdriver.

Step 11



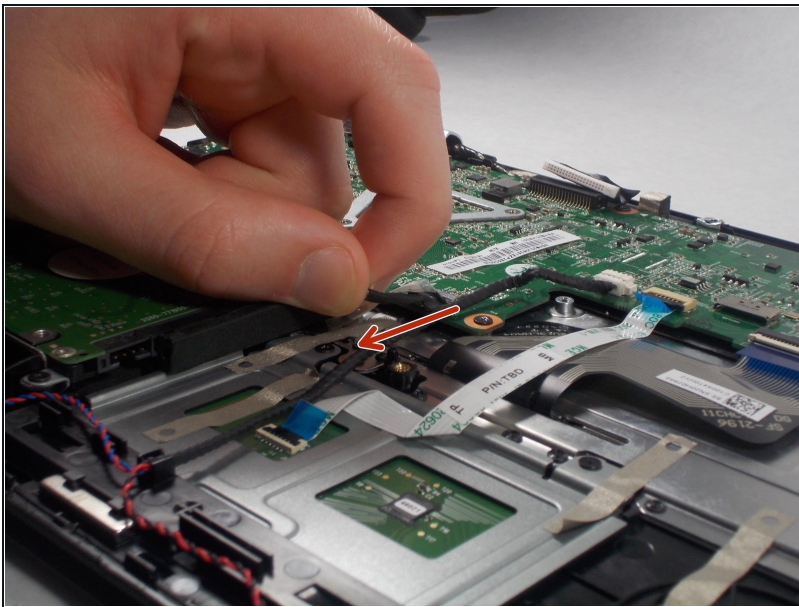
- Follow the wire out from the right side of the hard drive to locate where the hard drive connects to the motherboard.

Step 12



- Lift off the strip of tape securing the wire down to the computer.

Step 13



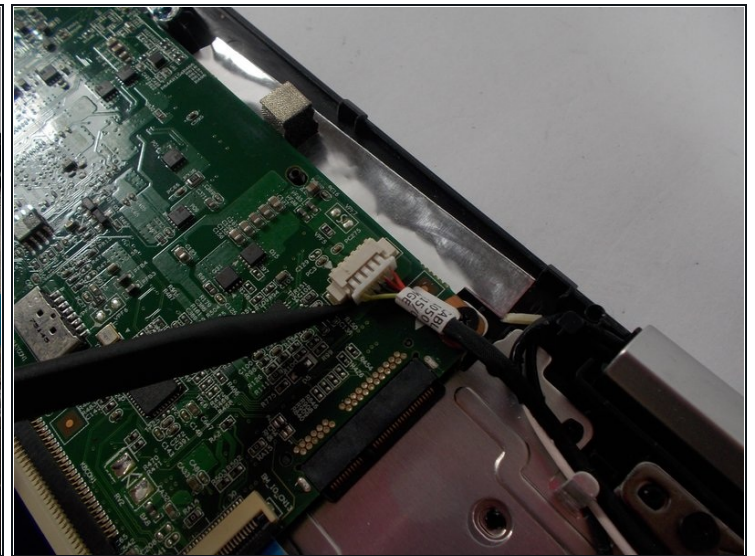
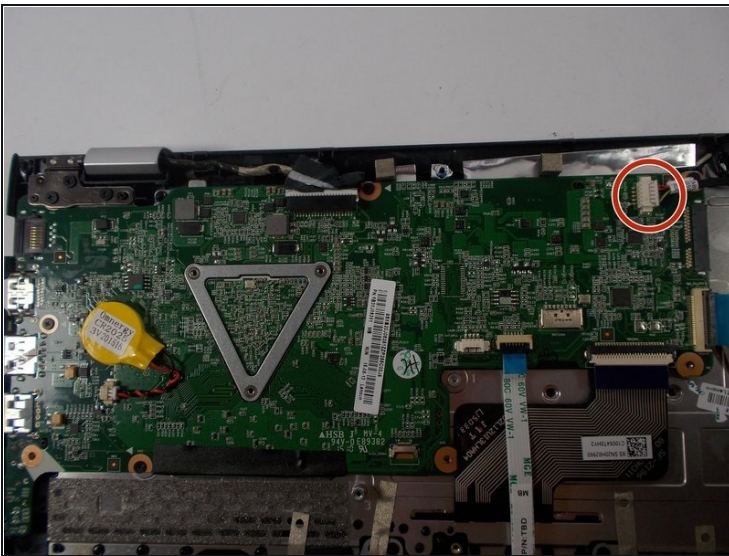
- Pull the connector out of its port on the motherboard.

Step 14



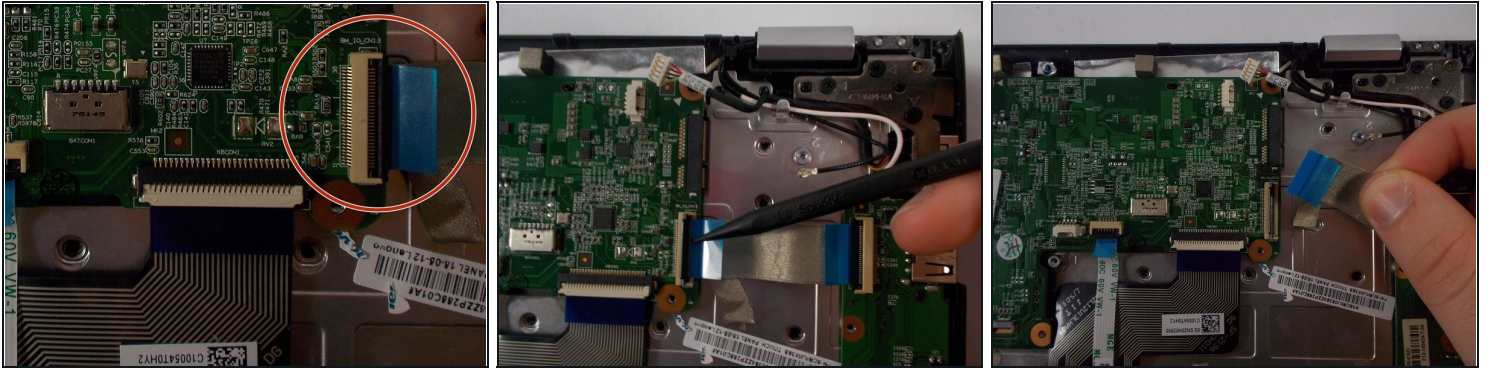
- Lift the hard drive out from the computer.

Step 15 — Motherboard



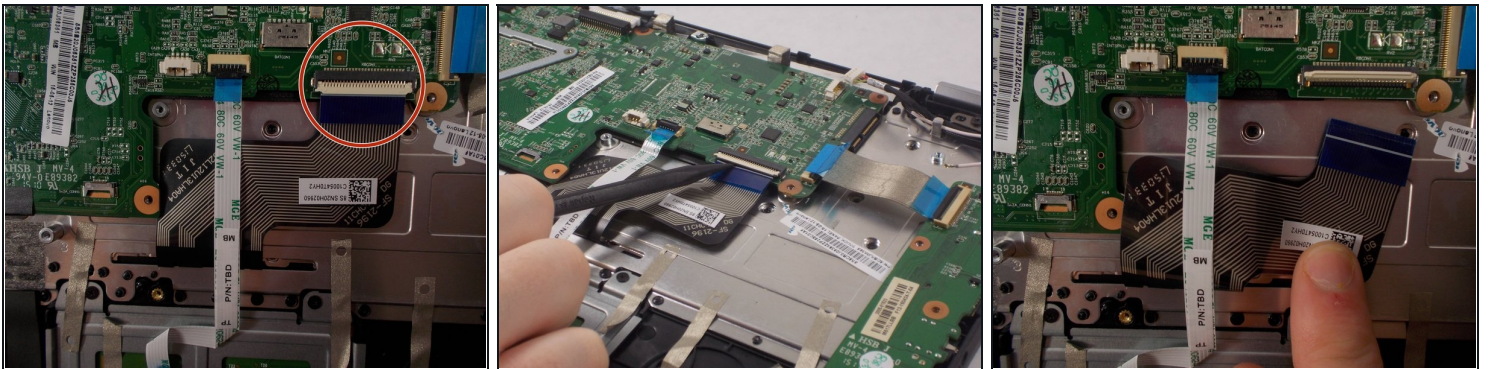
- Locate the power input cable on the top right corner of the motherboard.
- Remove the power input cable by gently sliding each side of the cable out of its port. Alternate between the left and right sides of the cable until it disconnects.

Step 16



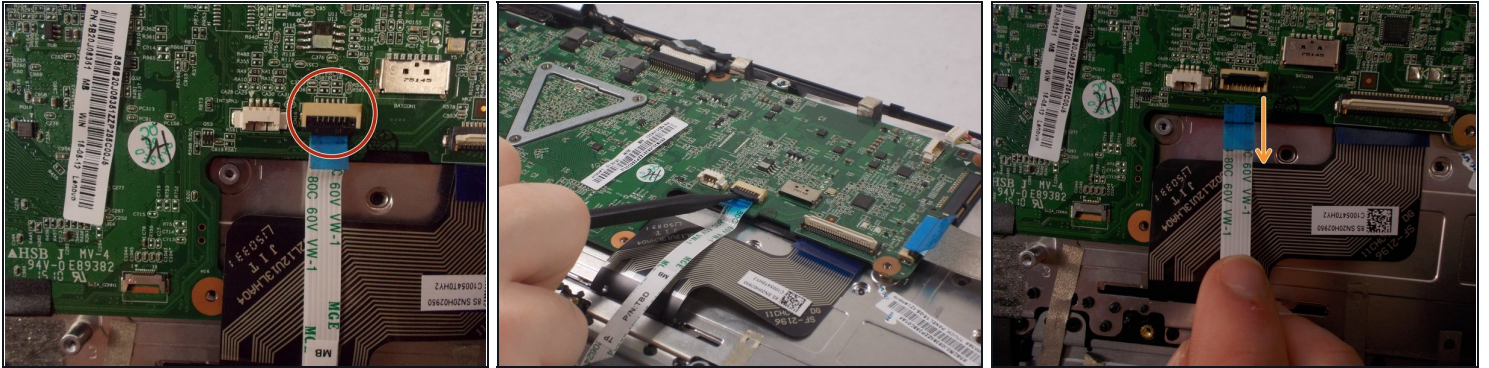
- Locate the ribbon cable with a blue tab on it. The cable is connected to the right edge of the motherboard.
- Lift up the black latch with the spudger.
- Pull on the blue tab to the left to remove the cable.

Step 17



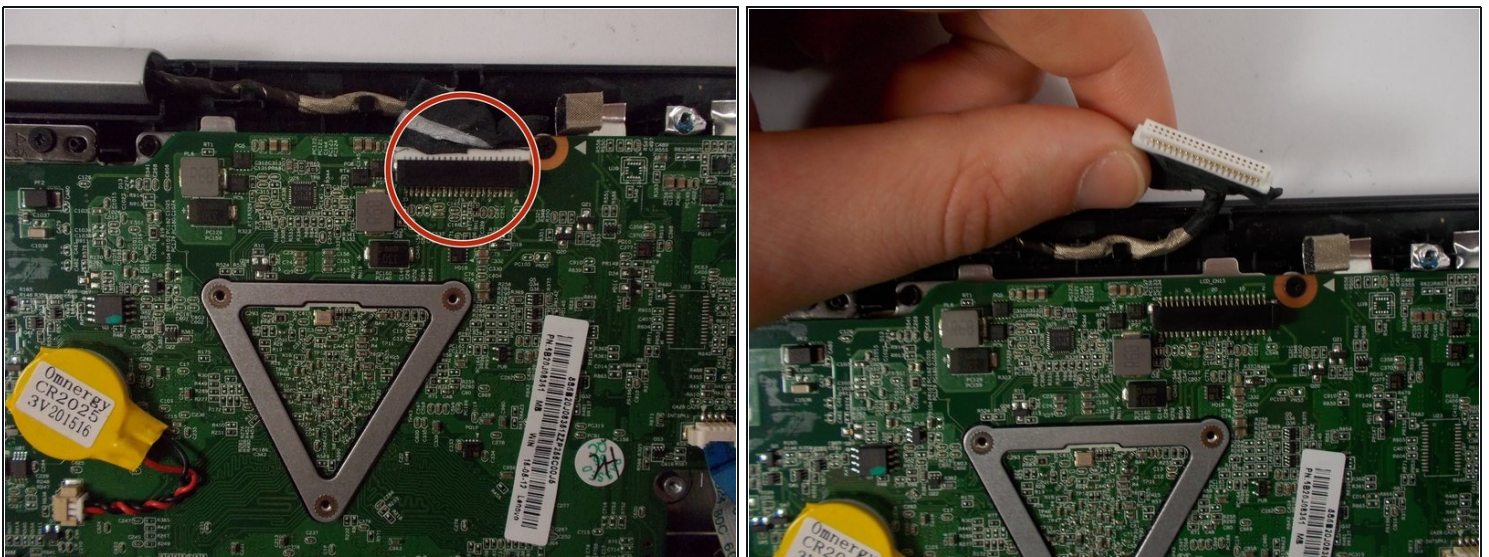
- Locate the black ribbon cable on the bottom right of the motherboard.
- Lift the white door on the end of the cable that connects to the motherboard.
- Slide the cable down to disconnect it from the motherboard.

Step 18



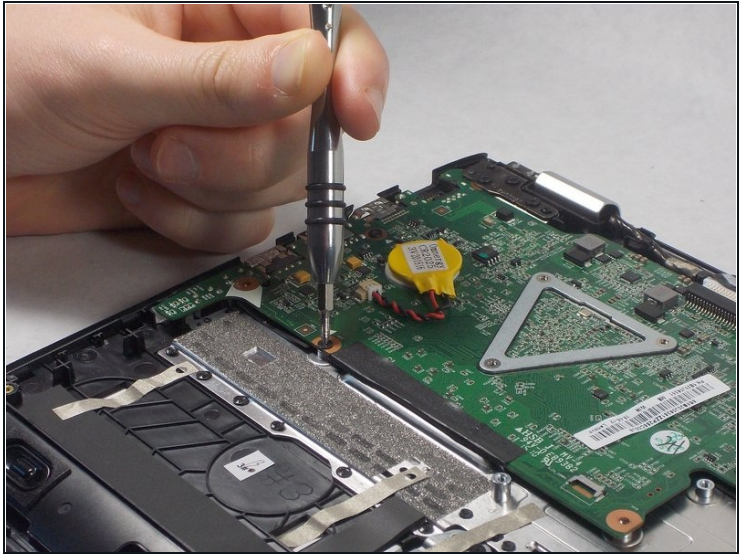
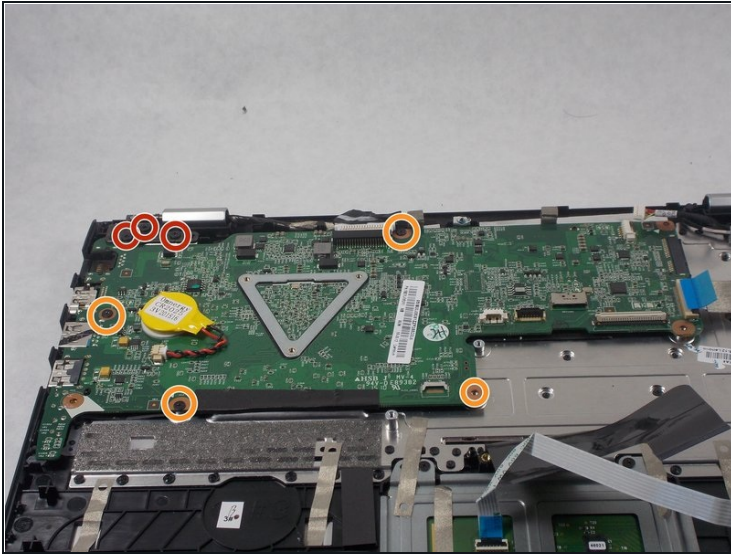
- Locate the white ribbon cable with a blue tab to the left of the black ribbon cable.
- Lift up the black latch holding the cable in to the motherboard.
- Pull the cable out of its port on the motherboard.

Step 19



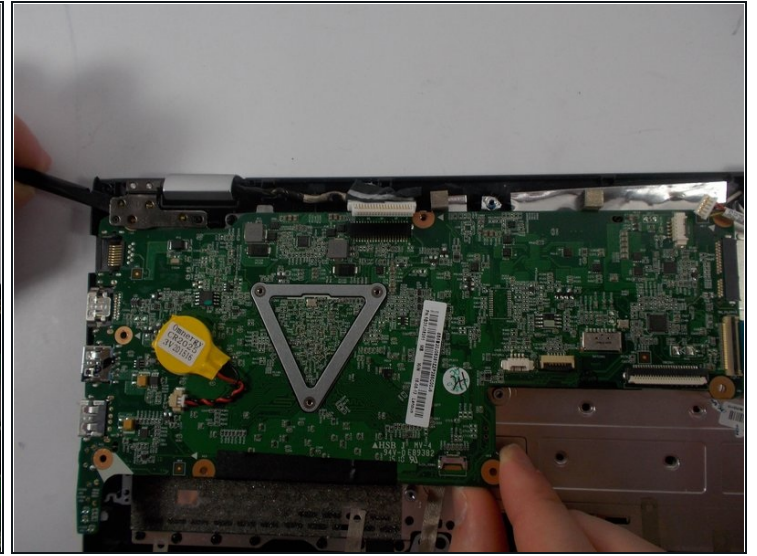
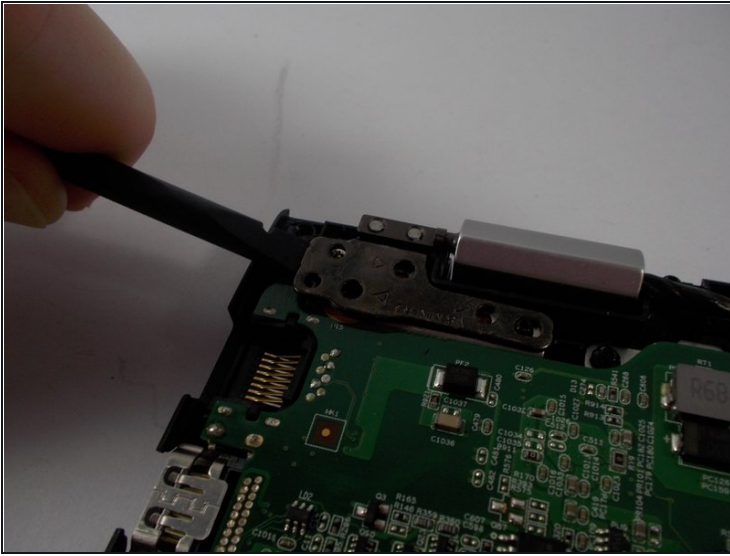
- Locate the white connector on the top edge of the motherboard.
 - Simply pull the wire away from the motherboard by hand to disconnect it.
- ⓘ A spudger may also be used to remove the cable, but it is not necessary.

Step 20



- Locate the three 4.5mm screws that are securing the bracket in the top left corner of the motherboard.
- Locate the four 3.5mm screws holding the motherboard in place.
- Remove all of the screws with a size 0 Phillips screwdriver.

Step 21



- Locate the metal bracket attaching the motherboard to the top-left of the computer.
 - Raise the metal bracket by prying it up and away from the motherboard.
 - Pull the motherboard away from the bracket to separate them.
- ⓘ These steps may need to be performed simultaneously in order to remove the motherboard from the bracket. The parts can easily stay stuck.
- ⚠ Do not pull the motherboard with too much force. The motherboard could be broken if handled too poorly.

Step 22



- Lift the motherboard out from the computer.

To reassemble your device, follow these instructions in reverse order.