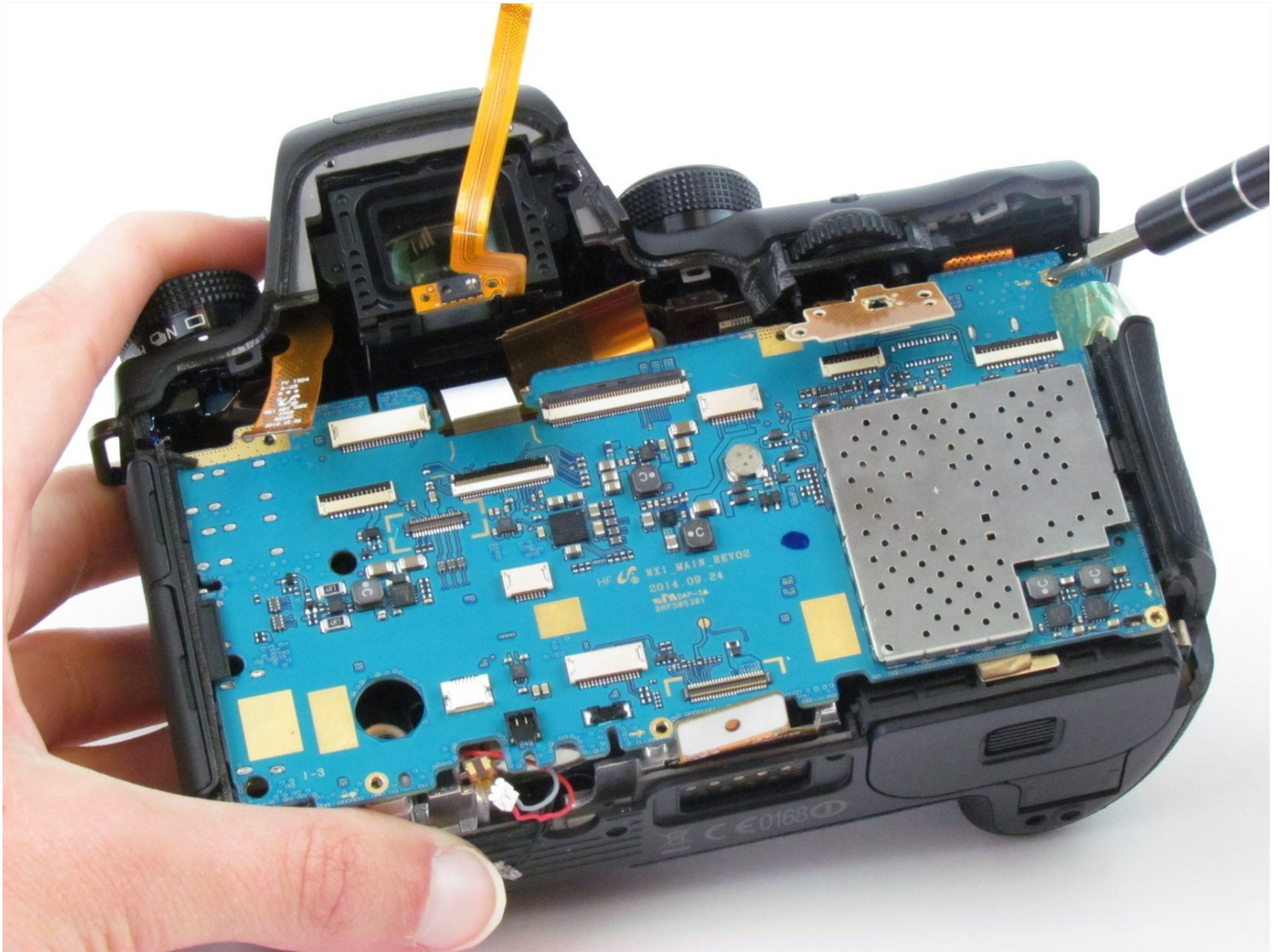




# Samsung NX1 Motherboard Replacement

Replace the motherboard of the camera, located...

Written By: Hannah Patrick



# INTRODUCTION

Replace the motherboard of the camera, located underneath the back cover.

## TOOLS:

Phillips #00 Screwdriver (1)

Tweezers (1)

Spudger (1)

## Step 1 — Back Cover



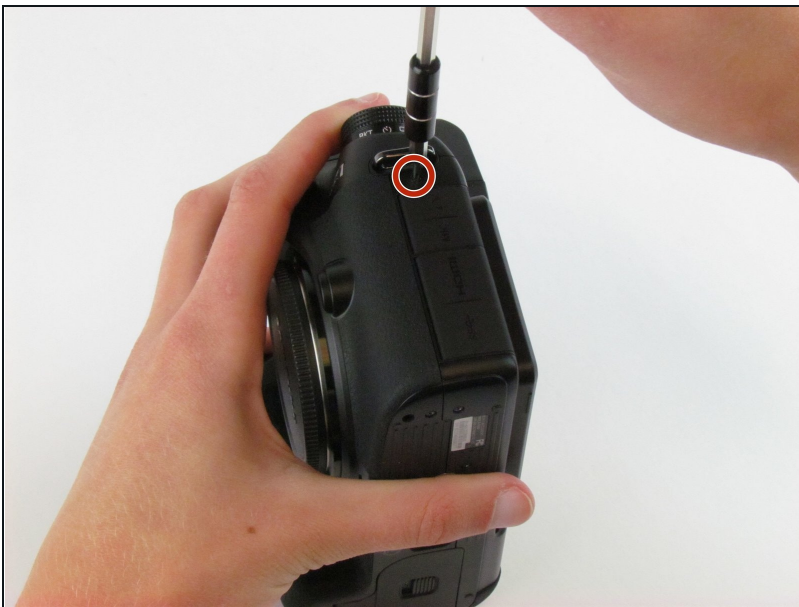
- Use the Phillips #00 screwdriver to remove the four 5.5 mm screws surrounding the viewfinder.
- Use your fingers to lift the plastic viewfinder cover upward.

## Step 2



- Use the Phillips #00 screwdriver to remove the two 5.5 mm screws from the right side of the camera above the SD card port.

## Step 3



- Use the Phillips #00 screwdriver to remove one 5.5 mm screw on the left, above the HDMI port.



## Step 4



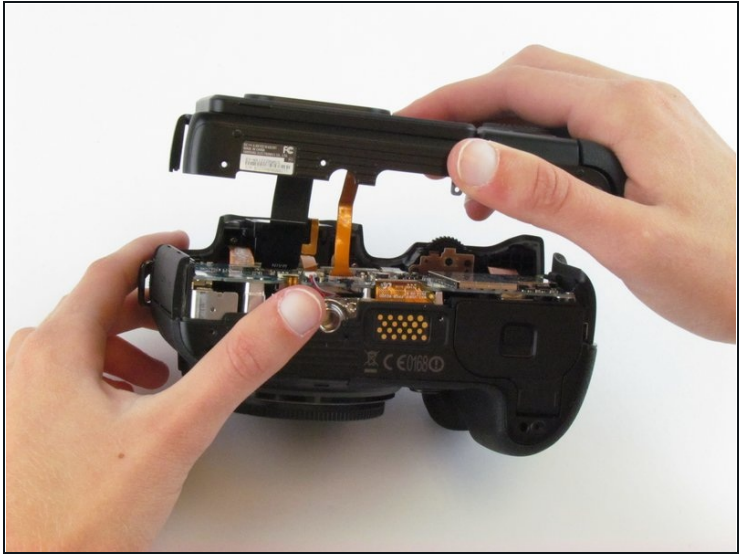
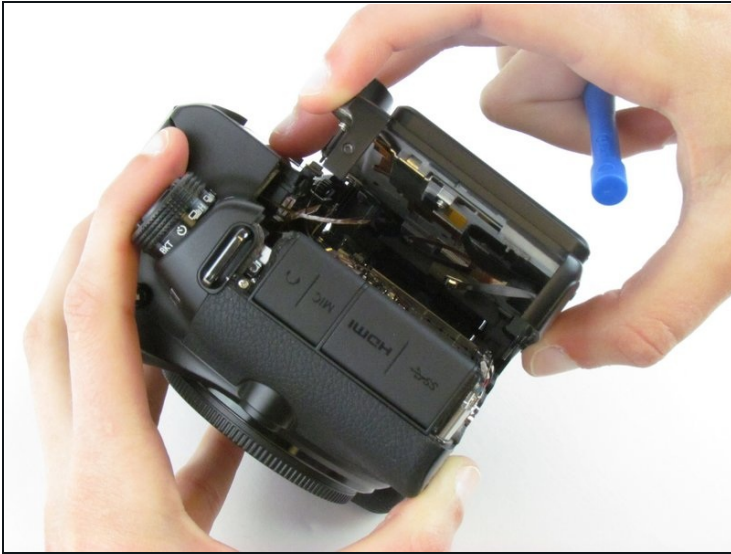
- Use the Phillips #00 screwdriver to remove the five 5.5 mm screws from the bottom, near the battery compartment.
- Use the Phillips #00 screwdriver to remove one 3.8 mm screw from the bottom of the hand grip, below the battery compartment.

## Step 5



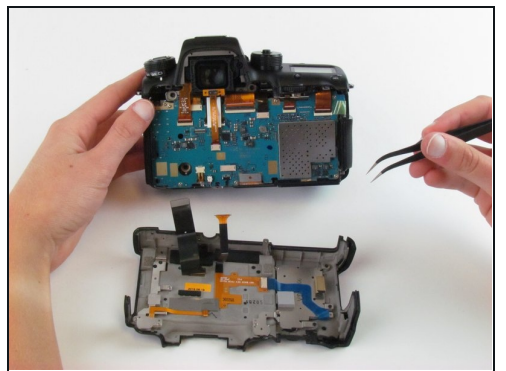
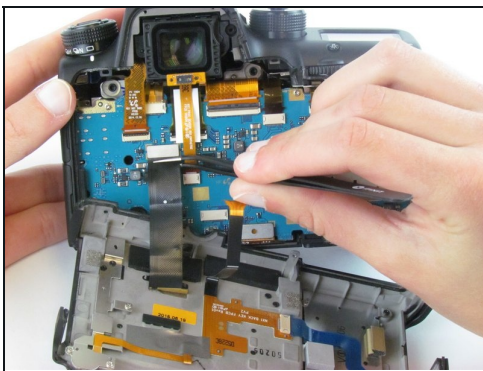
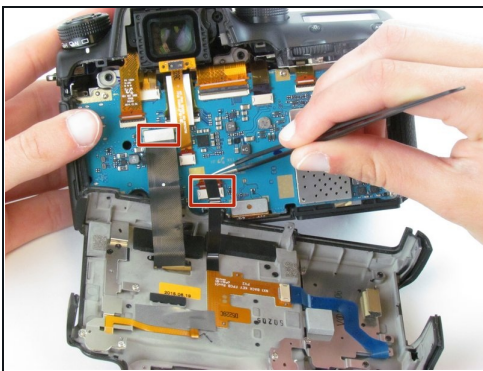
- Use a plastic opening tool to separate the back cover from the front cover.
- ① Pry the back cover in this order: bottom, right side, left side.

## Step 6



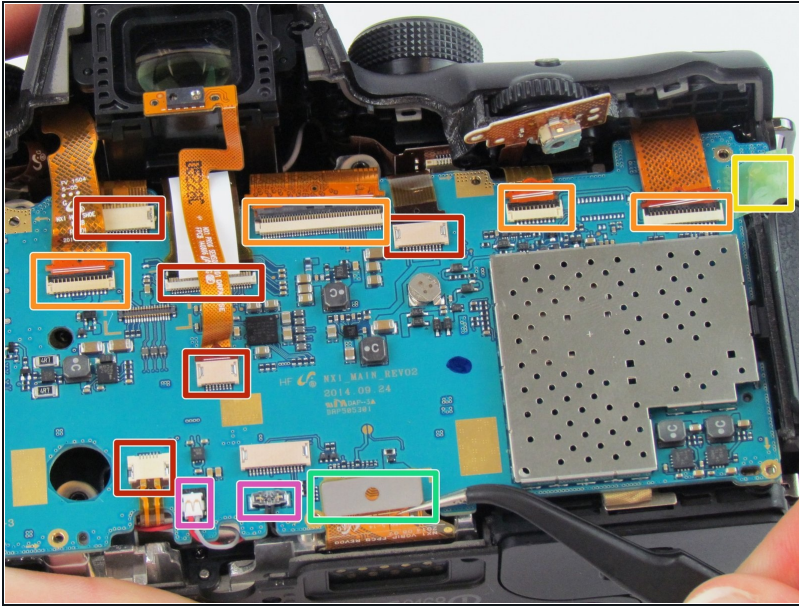
- Use your fingers to pull the back cover away from the front cover.
- ⓘ Do not completely separate the back cover from the front cover as two cables hold these components together.

## Step 7



- Use [tweezers](#) to pull the two ribbon cables horizontally out of their clips.

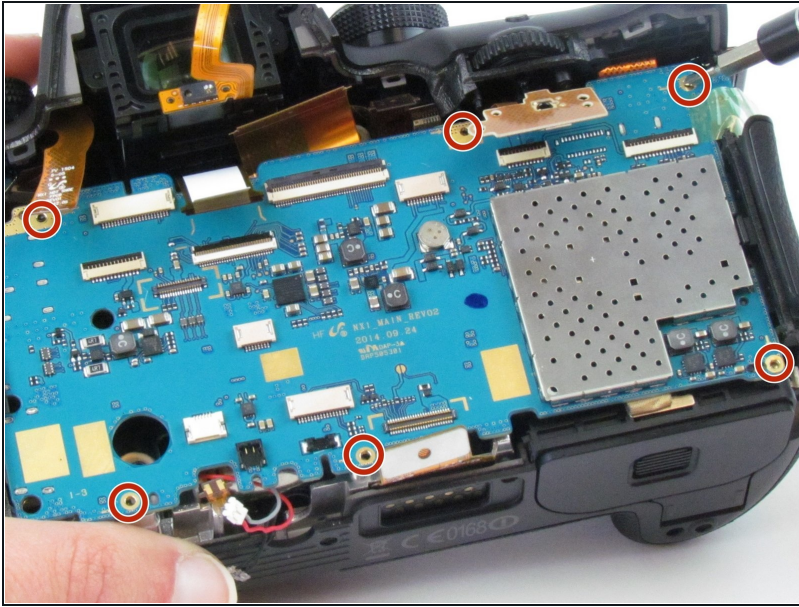
## Step 8 — Motherboard



- Use [tweezers](#) to pull the five ribbon cables horizontally out of their clips.
- Use a spudger or your fingernail to flip up the four, small retaining flap, or zero insertion force (ZIF) connectors. Then, pull the ribbon cable out to disconnect it.
- Remove the green tape using your fingernail. Then, use a spudger to pry the one antenna cable connector straight up from the board.
- Use tweezers or a spudger to pry up each side of the flat-topped connector. Then, lift the one connector straight up from its socket.
- Use tweezers or your fingers to pull the two double-bundled cables up and away from the connector in the same direction that the individual wires are running.

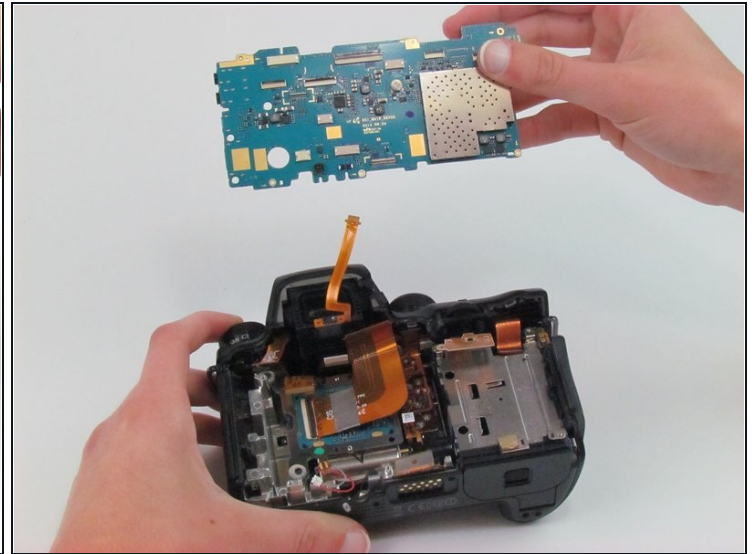


## Step 9



- Use the Phillips #00 screwdriver to remove the six silver 4.5 mm screws.

## Step 10



- Use a spudger to lift the motherboard up starting on the right side proceeding to the left side.
- Use your fingers to lift the motherboard completely out of the camera.

---

To reassemble your device, follow these instructions in reverse order.

