



# Bell and Howell DNV16HDZ Lens Assembly Replacement

This guide shows the breakdown of the camcorder's lens

Written By: Jerry Hadjah



---

# INTRODUCTION

These are the first steps to taking apart the device.



## TOOLS:

- [iFixit Opening Tools](#) (1)
  - [Phillips #0 Screwdriver](#) (1)
-

## Step 1 — Lens Assembly



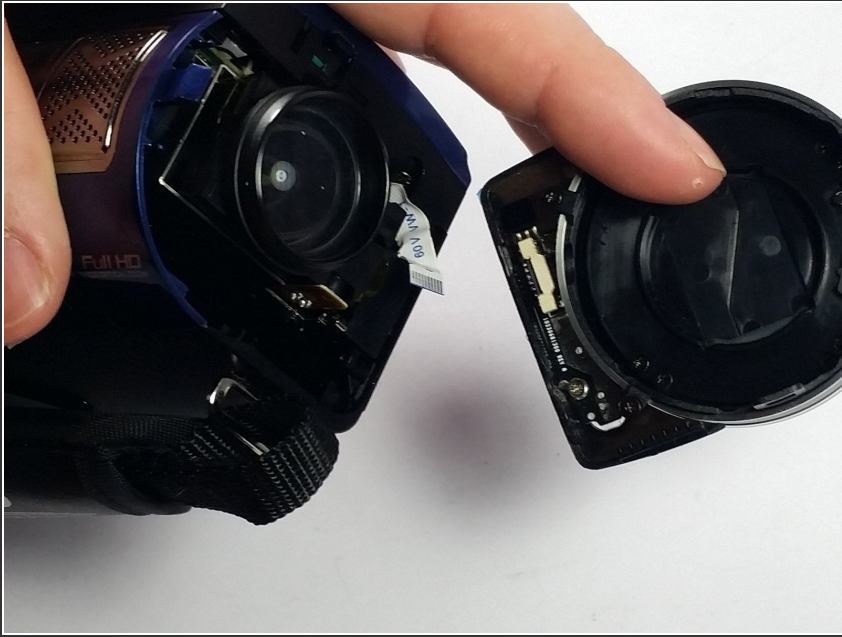
- Remove the five 30mm Phillips #0 screws on the bottom of the camera.

## Step 2



- Use a plastic opening tool to disconnect the internal hinges that snaps the camera into place.
- ⚠ Using a plastic opening tool is important since a metal one will scratch or damage the thin plastic hinges that hold the camera together.

## Step 3



- It will still be connected by a plastic film. This can also be disconnected by pulling up the white part where it connects to the light circuit board.

To reassemble your device, follow these instructions in reverse order.