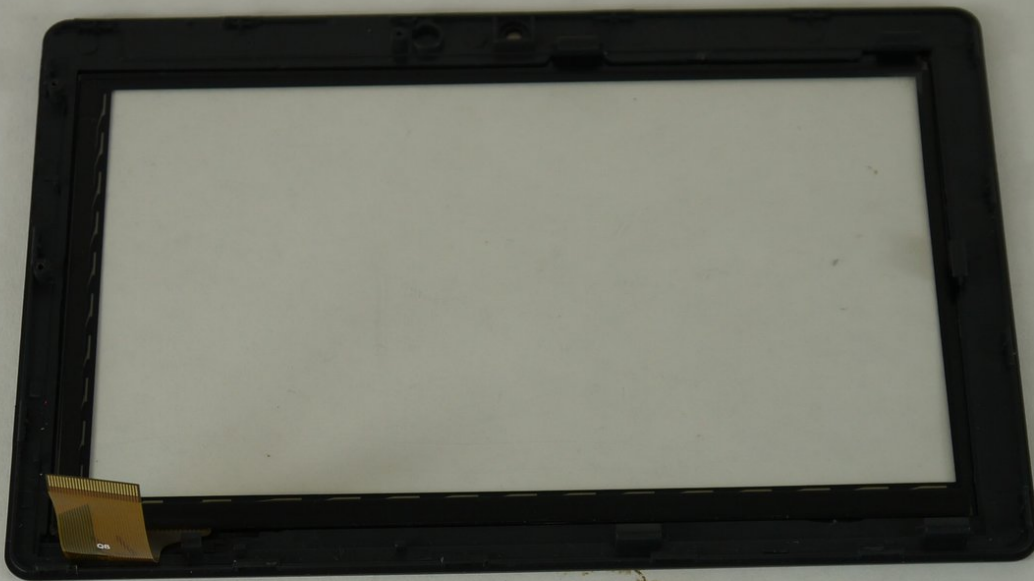




# Alldaymall A88X Touch Sensor Replacement

Restore the touch based interactive capabilities of your device by replacing a defective or broken touch sensor.

Written By: Drhaber



# INTRODUCTION

The Alldaymall A88X features a capacitive touch sensor that is mounted in front of the LCD Screen . This guide will walk you through the process of removing the existing touch sensor and installing a new one.



## TOOLS:

- [iFixit Opening Tools](#) (1)
  - [Soldering Iron](#) (1)
  - [Tweezers](#) (1)
  - [Heavy-Duty Spudger](#) (1)
  - [IFIXIT screwdriver with a PH0 bit](#) (1)
-

## Step 1 — Alldaymall A88X Back Cover



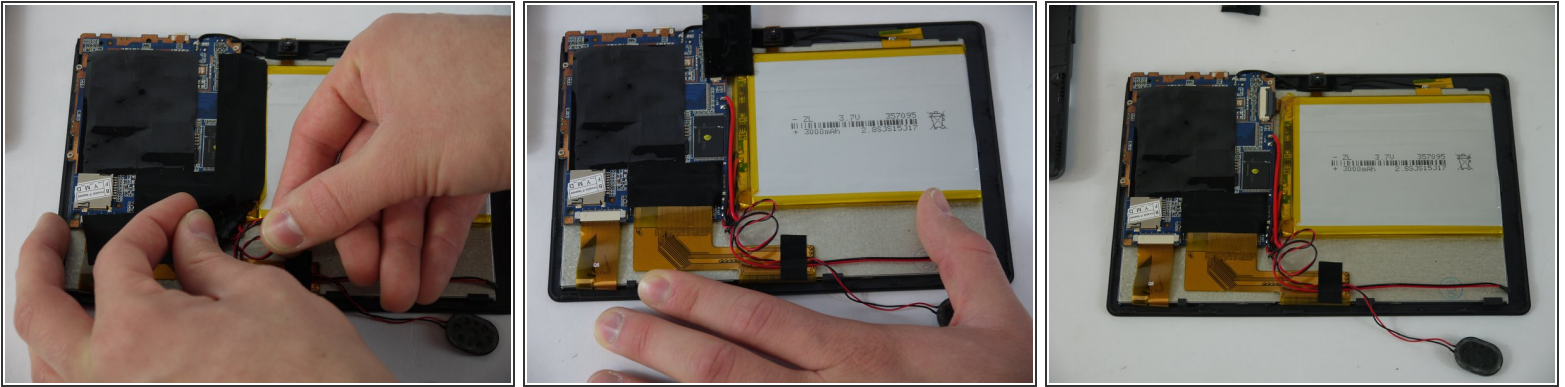
- Using a plastic opening tool, carefully pry the device apart. Make your way around the entire perimeter of the device and carefully place the two panels next to each other.
- ⚠ After the panels are separated, watch out for the speaker on the rear panel as it's wire is rather short.
- ⓘ When separating the panels keep an eye out for the power button and volume rocker as they can be dislodged.

## Step 2



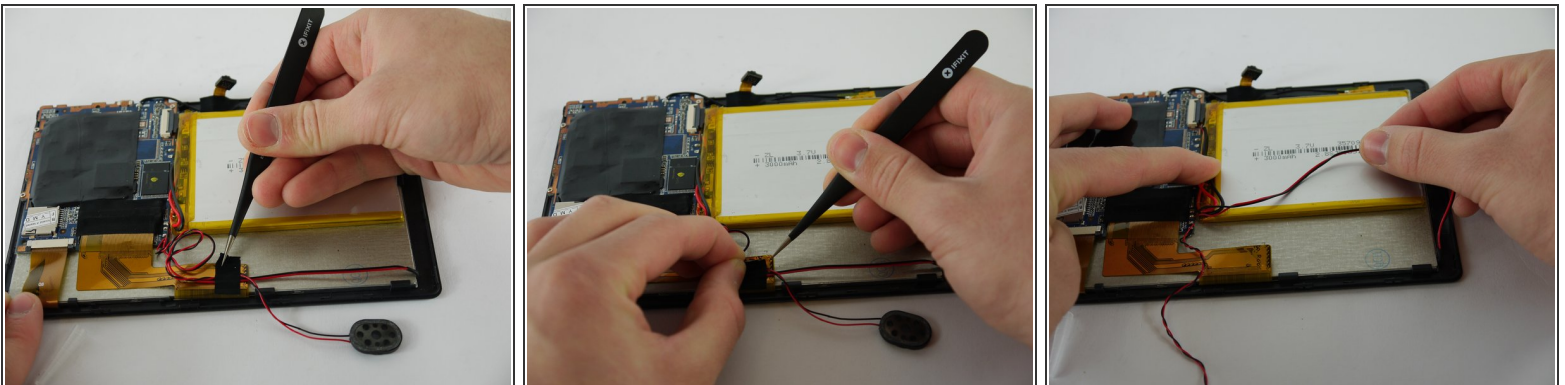
- Grip the speaker from the sides with your fingers or a pair of tweezers and slowly begin to remove it from the rear panel.
- ⚠ When removing the speaker, make sure not to disconnect the wires in any way.
- After the speaker has been removed, place the rear panel aside.

## Step 3 — Speaker



- Carefully separate the speaker wire from the tape and proceed to peel the tape off in an upwards direction.
- ⓘ The tape we are removing covers a number of connections on the motherboard. Be extra careful not to sever any of these.

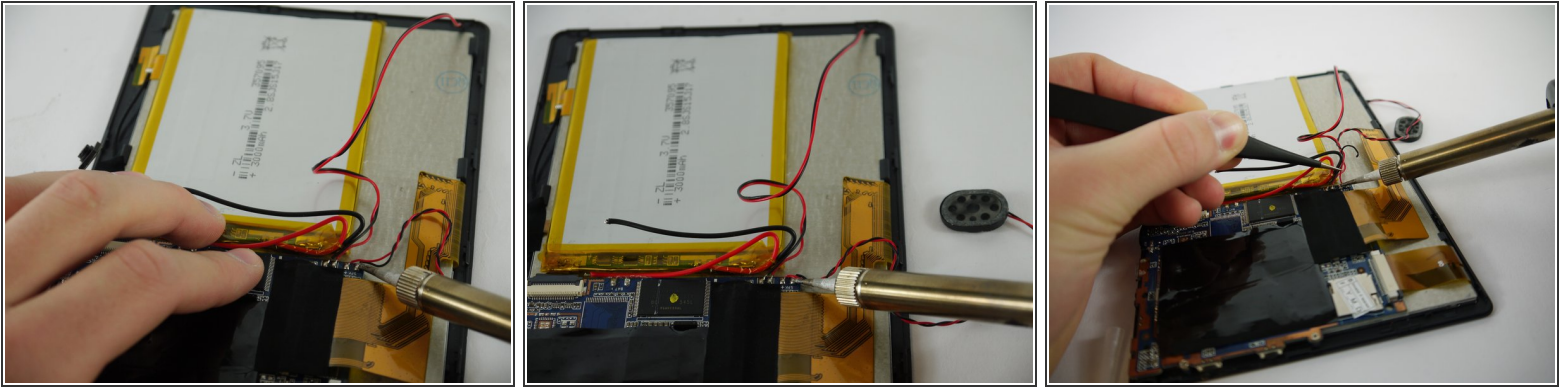
## Step 4



- Using a pair of tweezers, begin separating the tape downwards from the back panel.
- Pull the tape away from the wire bundle beneath.
- Isolate the wire running from the speaker to the motherboard.



## Step 5



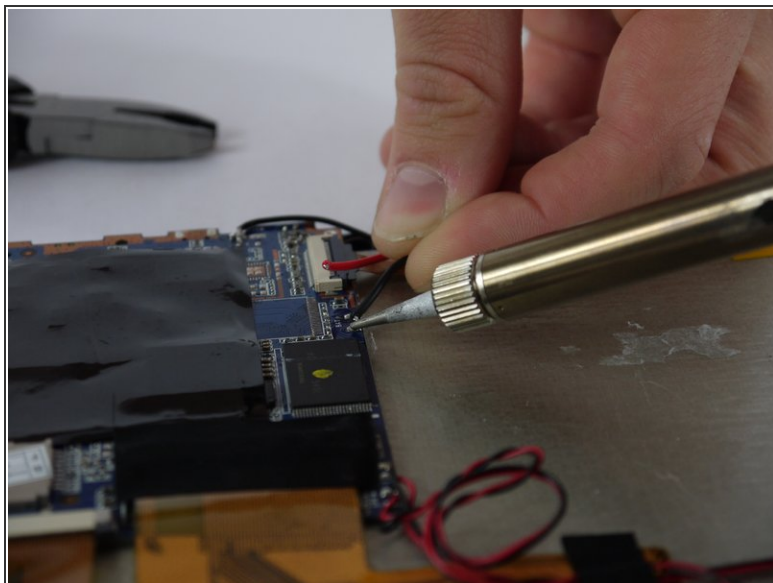
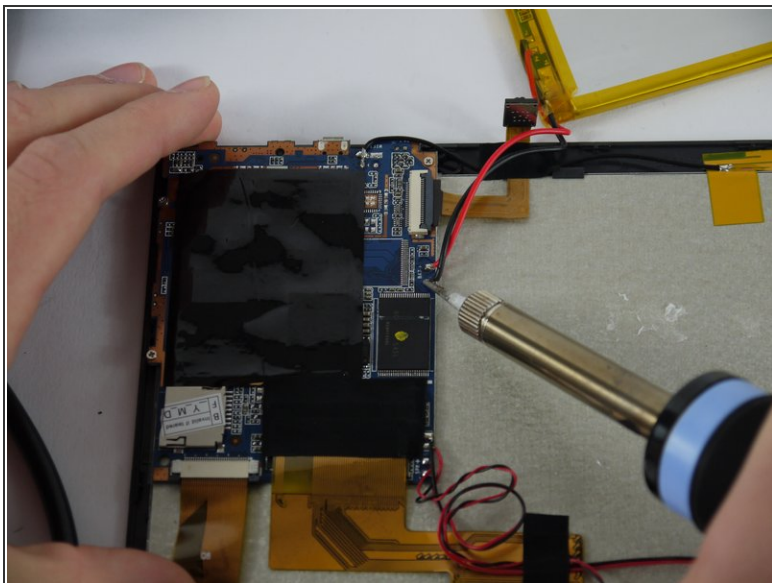
- [Desolder](#) the speaker wires from the motherboard.

## Step 6 — Camera



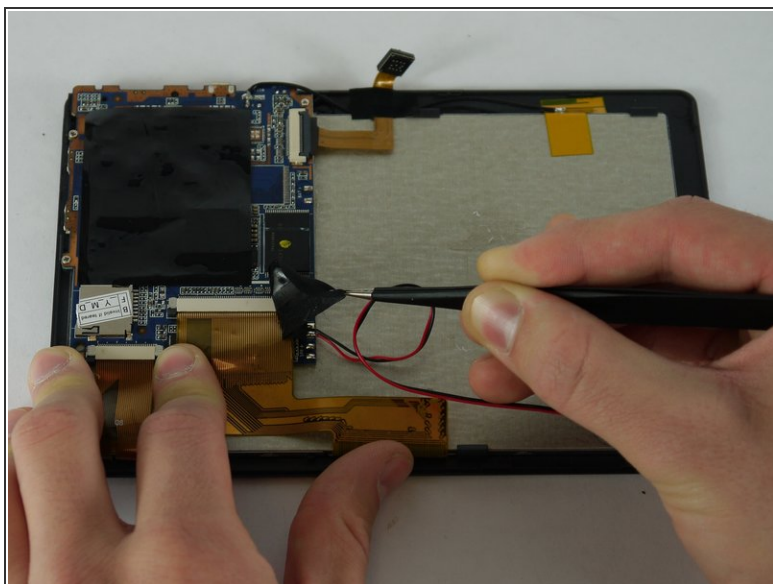
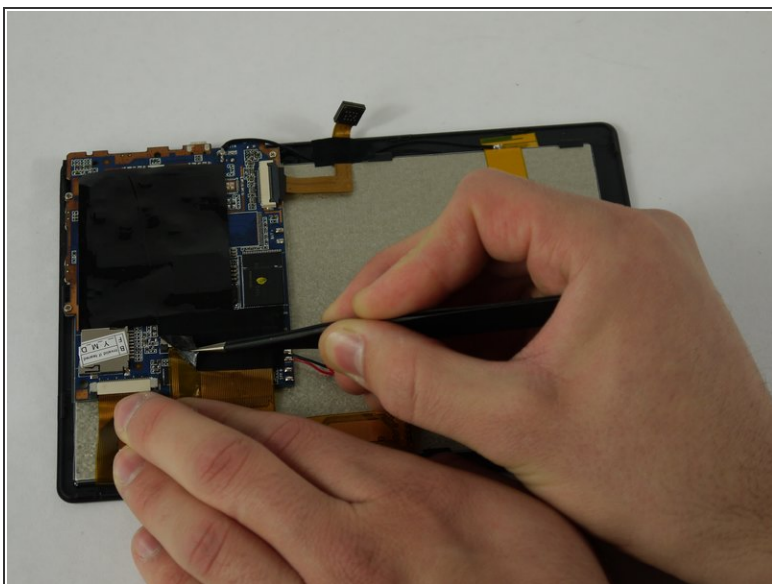
- Using a nylon spudger, slowly work your way underneath the battery separating it from the panel beneath.
  - After the battery is separated from the panel make sure to place it face down above the tablet itself.
- ⚠ Throughout the removal process keep an eye on the battery's wires and make sure they do not break.

## Step 7



- [Desolder](#) the wires that connect the battery to the motherboard.

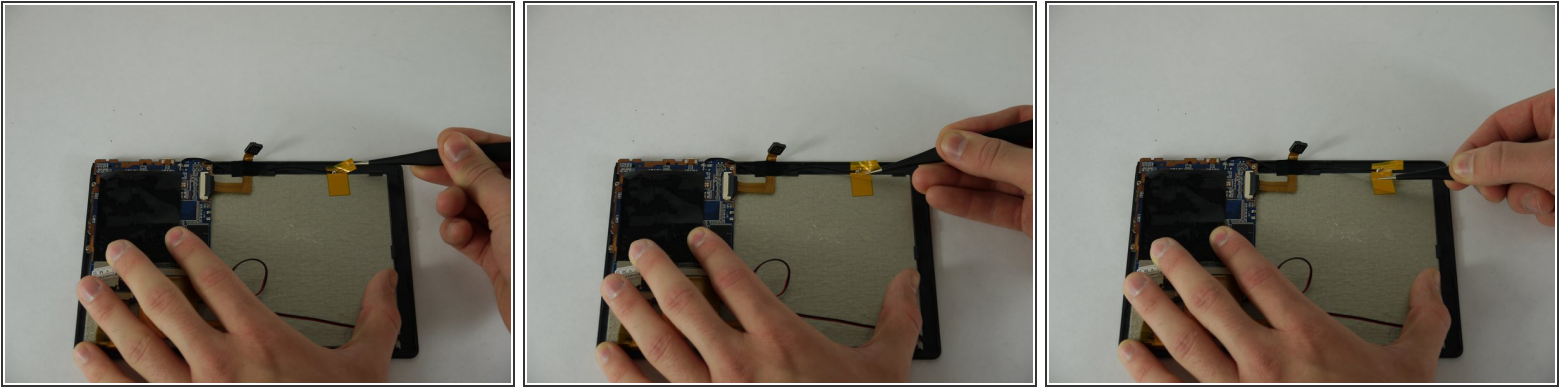
## Step 8



- Using a pair of tweezers begin to peel the tape covering the ribbon cable on the motherboard.



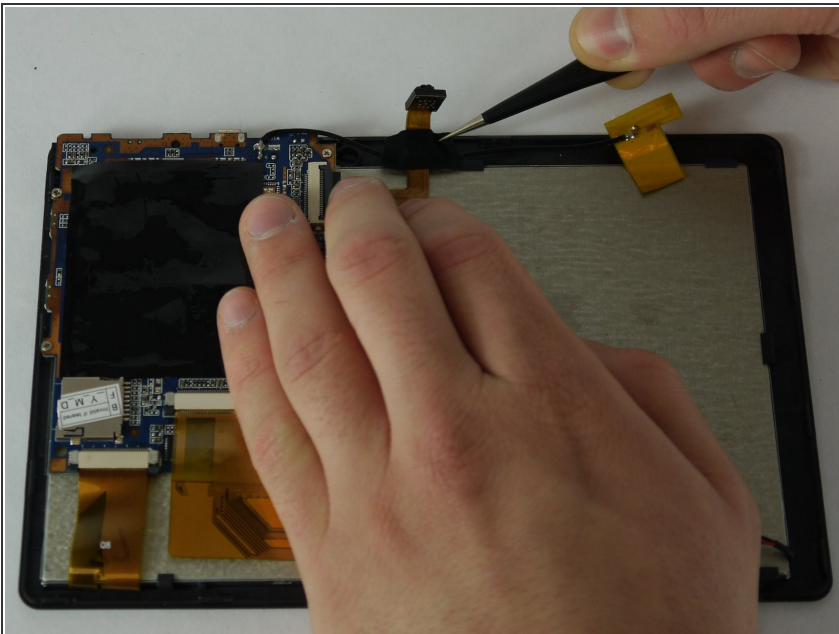
## Step 9



- Using a pair of tweezers begin to peel the antenna from the metal panel.
- Work your way down until the antenna is completely removed.

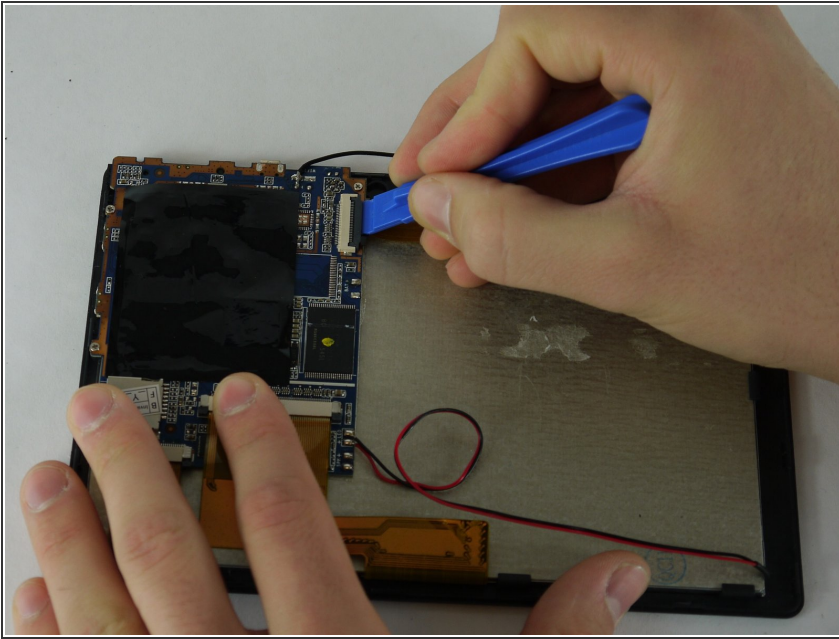
⚠ Be careful not deform the antenna or sever its connection.

## Step 10



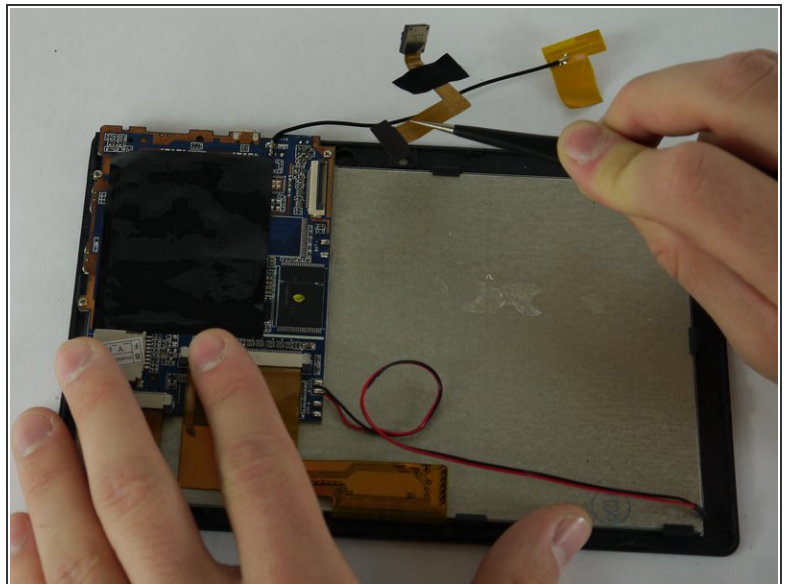
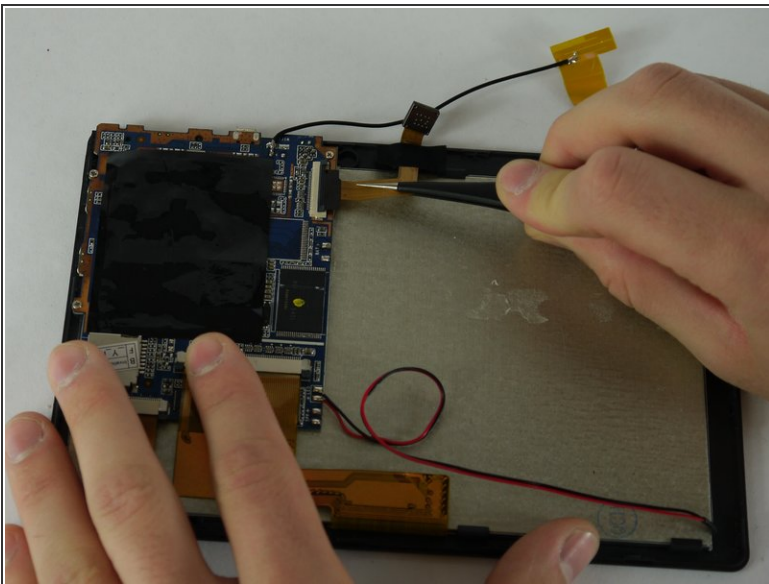
- Using a pair of tweezers remove the tape securing the cameras to the back panel.

## Step 11



- Using a plastic opening tool lift up the flap on the ribbon cable receptacle.

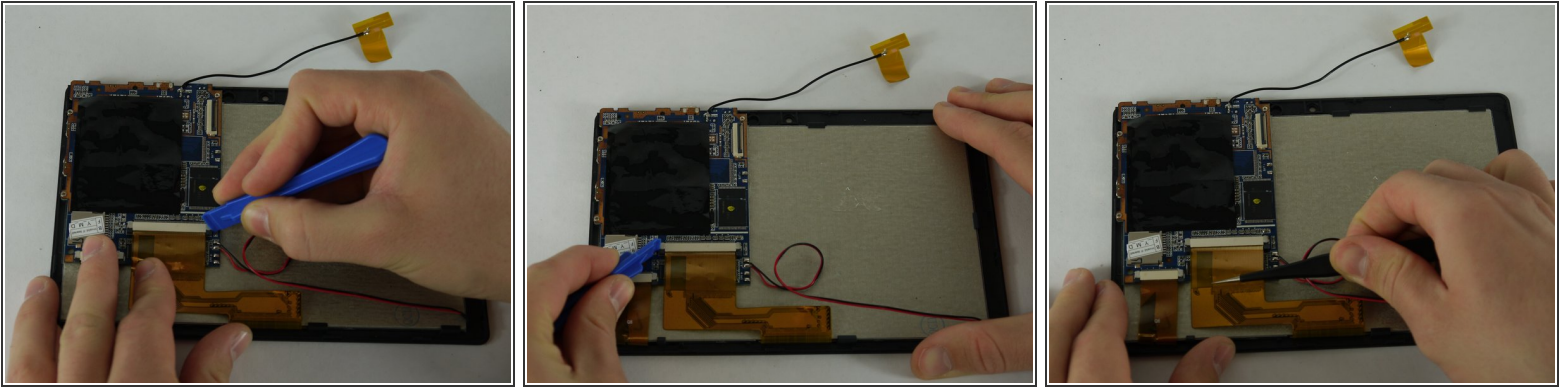
## Step 12



- Using a pair of tweezers remove the camera assembly from its housing and its receptacles.

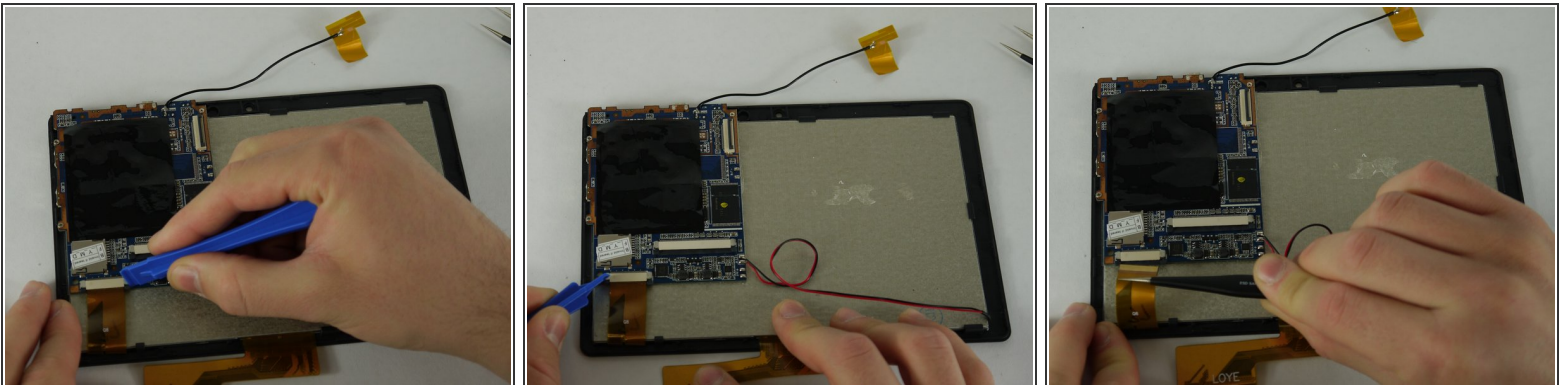


## Step 13 — Motherboard



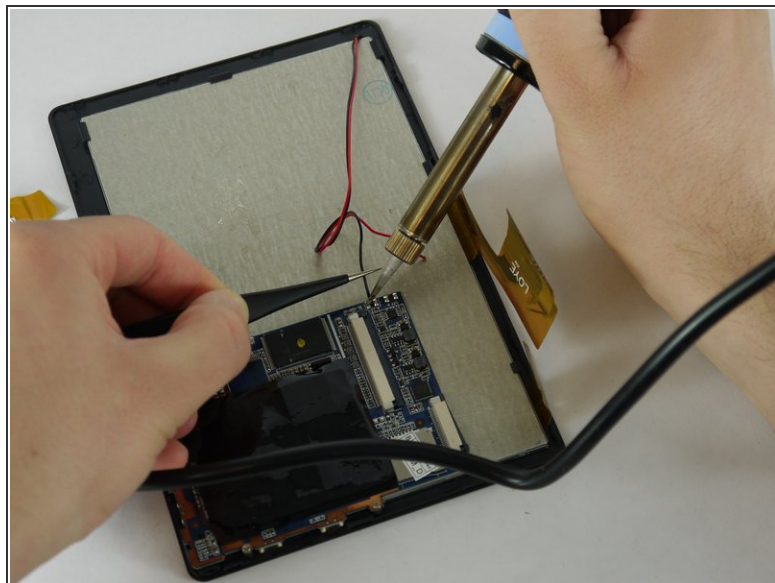
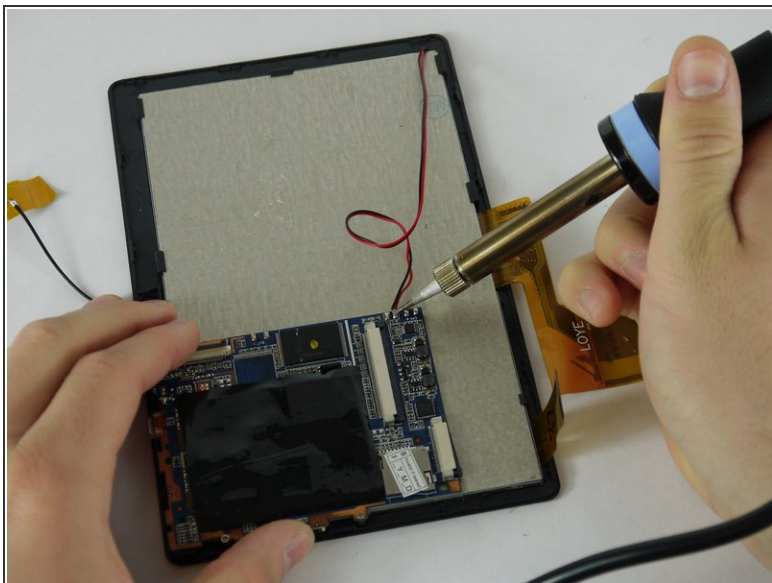
- Use a plastic opening tool to pull out the black knobs on both sides of the ribbon cable receptacle.
- Using a pair of tweezers remove the ribbon cable from its receptacle.

## Step 14



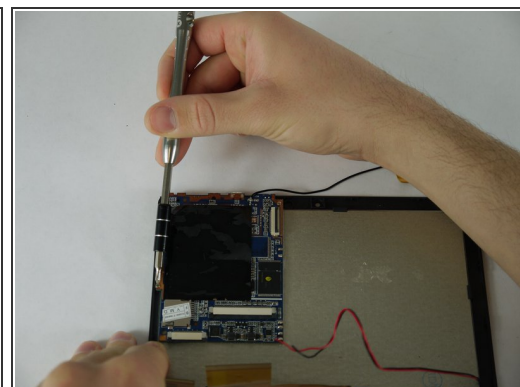
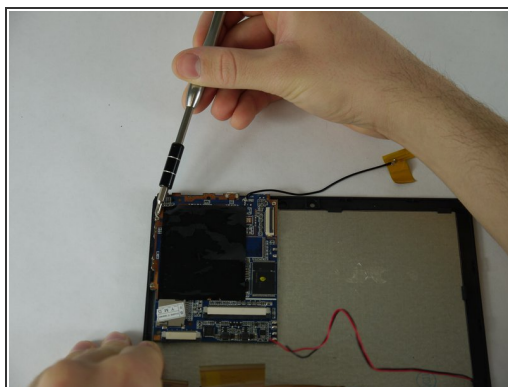
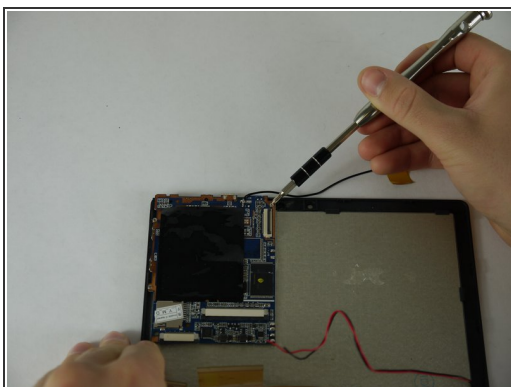
- Now on the left ribbon cable use a plastic opening tool to pull out the black knobs on both sides of the ribbon cable receptacle.
- Using a pair of tweezers remove the ribbon cable from its receptacle.

## Step 15



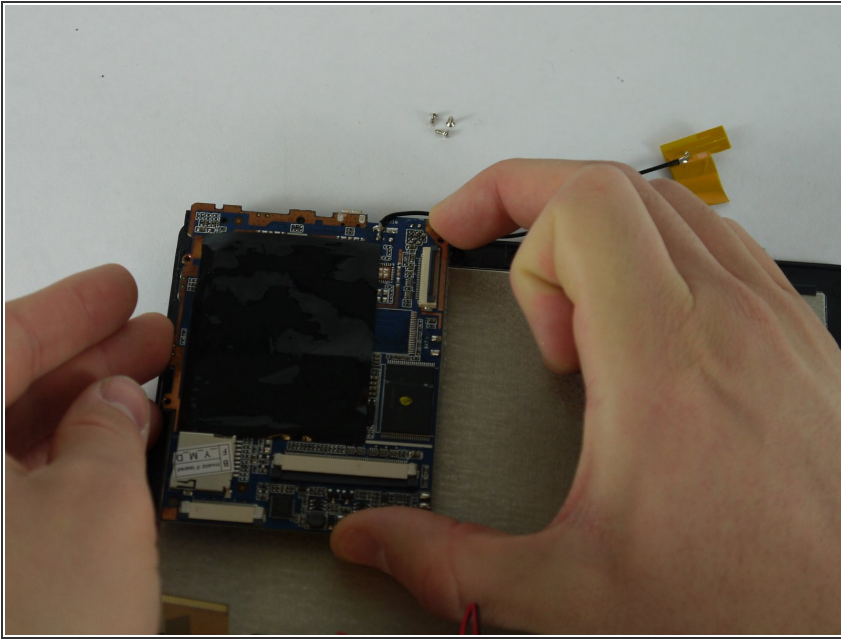
- [Desolder](#) the wires that connect the backlight to the motherboard.

## Step 16



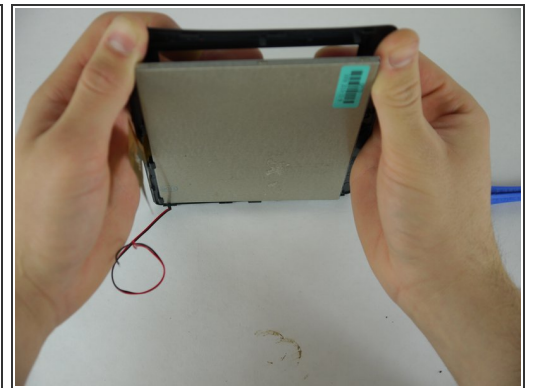
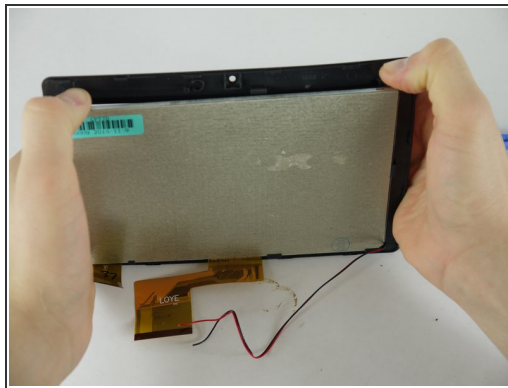
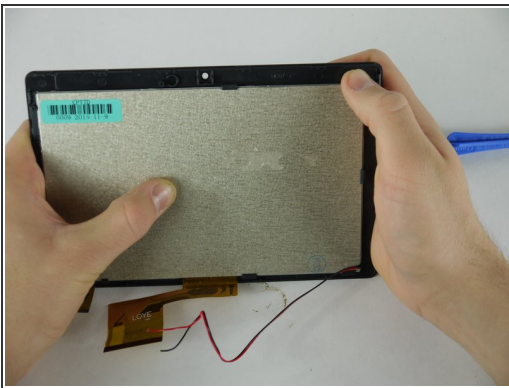
- Using a PH0 screw bit unscrew the three 3mm screws securing the motherboard to the back panel.

## Step 17



- Carefully lift up on the motherboard from its housing.

## Step 18 — LCD Screen and Touch Sensor Assembly



- Gently pry the brackets holding the touch sensor to the LCD Screen

⚠ Do not bend the touch sensor too much as it may shatter.



## Step 19 — Touch Sensor



- Set the LCD Screen aside.

To reassemble your device, follow these instructions in reverse order.