



# Primux alpha 3x Disassembly

Breakdown of the phone.

Written By: Kevin Luis





## TOOLS:

- [New Item](#) (1)
-

## Step 1 — Primux alpha 3x Disassembly



- We remove the back cover and battery.

## Step 2



- Remove the screws and exerting a little pressure remove the plastic cover.

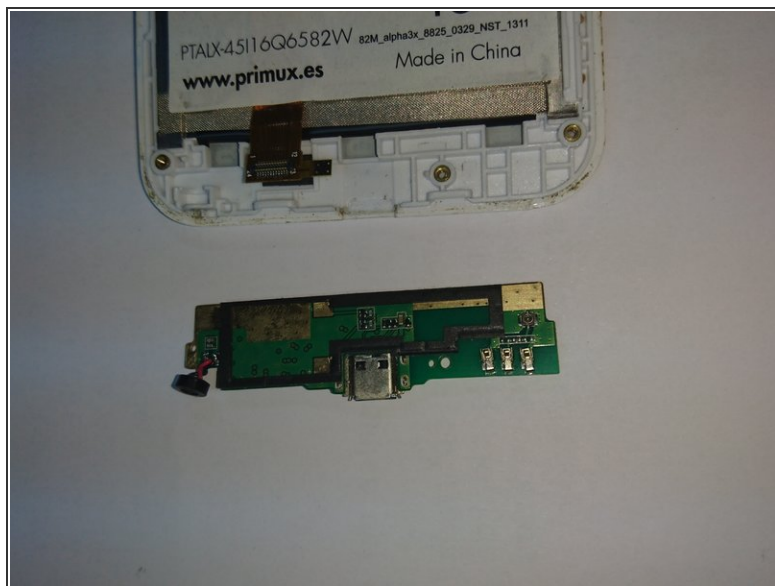


## Step 3



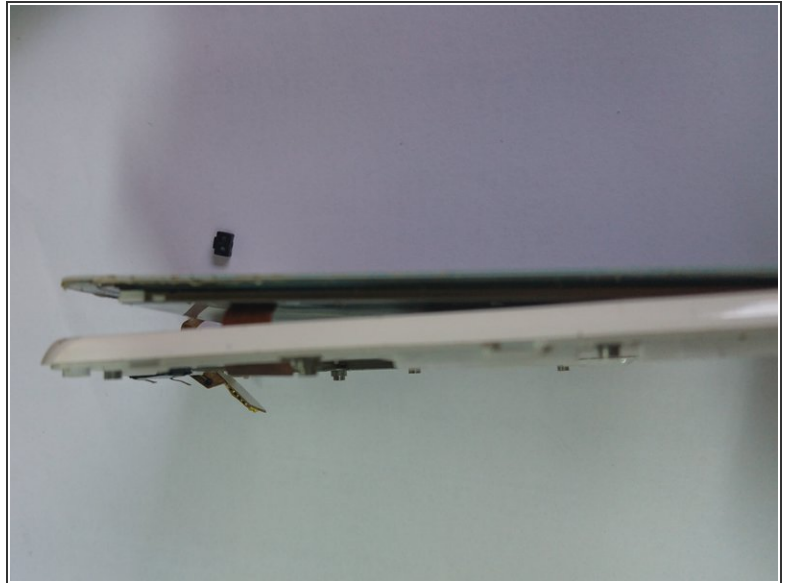
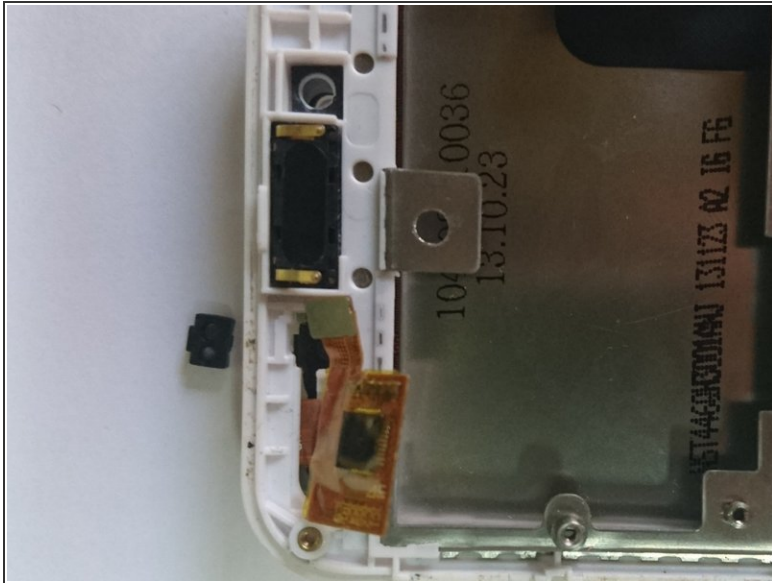
- We take off the lapels with great care.

## Step 4



- Unscrew and remove the plates.

## Step 5



- We remove the black plastic protector and exert a little pressure, the screen will come off.

## Step 6



- We will separate the plastic cover of the screen.
- We will put some pressure on the screen and it will detach from this, the touch sensor.

## Step 7



- Finally and for mere knowledge, images of the sensor open internally.

To reassemble your device, follow these instructions in reverse order.