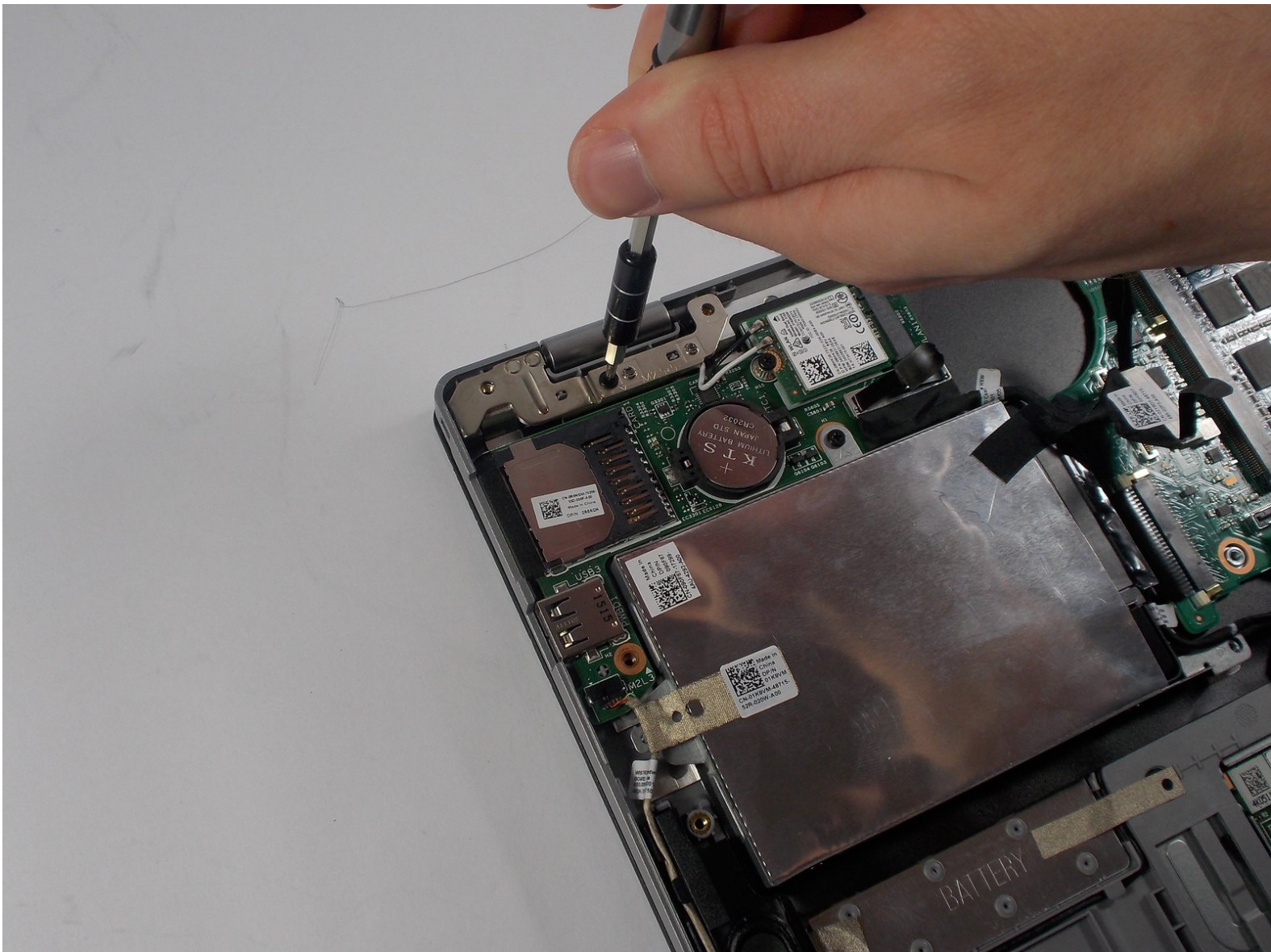




Dell Inspiron 11-3152 Screen Replacement

This guide will show you how to remove your screen so you can replace it.

Written By: Matthew Duncan



INTRODUCTION

This guide will show you how to remove your screen so you can replace it.



TOOLS:

- [Phillips #1 Screwdriver](#) (1)
 - [Phillips #0 Screwdriver](#) (1)
 - [Spudger](#) (1)
-

Step 1 — Back Panel



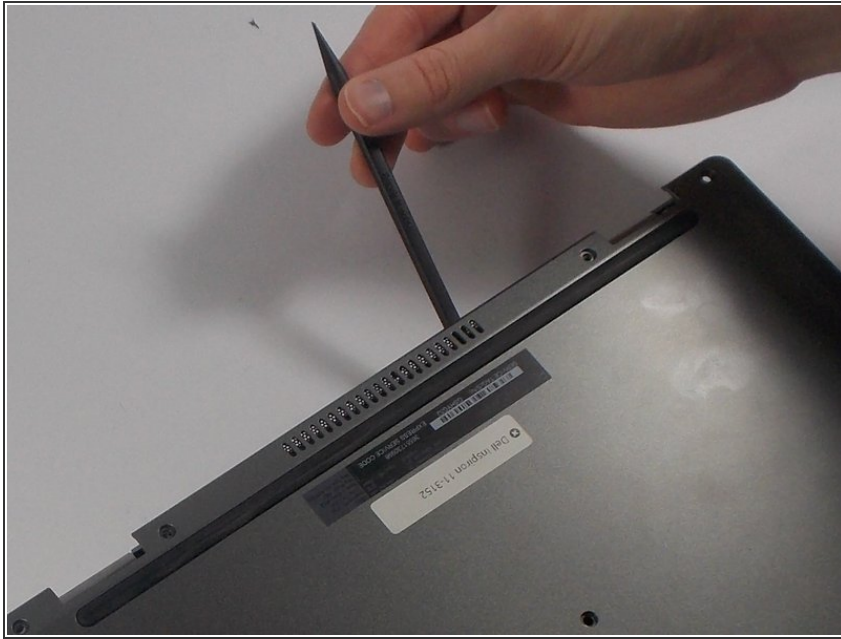
- Flip the computer over.

Step 2



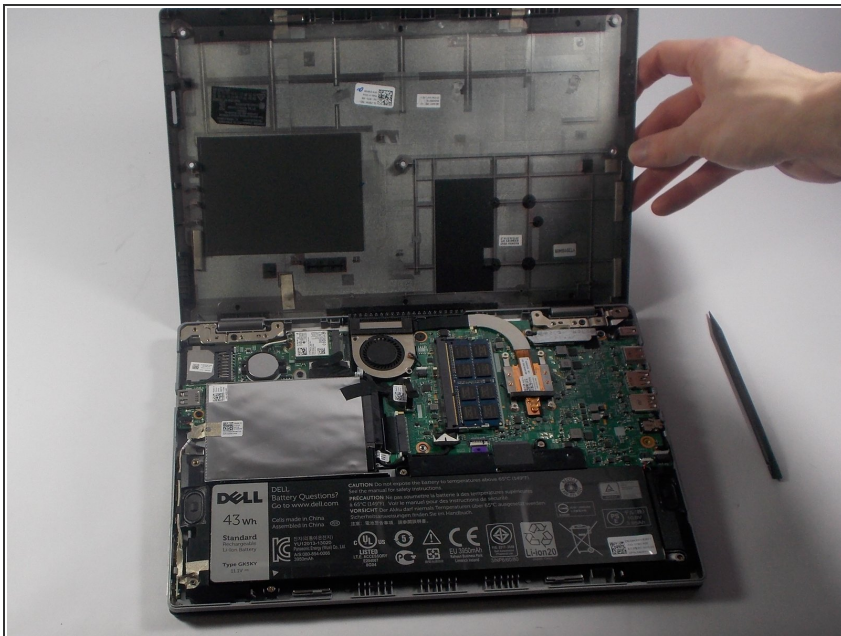
- Remove all nine 5mm Phillips head screws from the back cover using #0 Phillips head.

Step 3



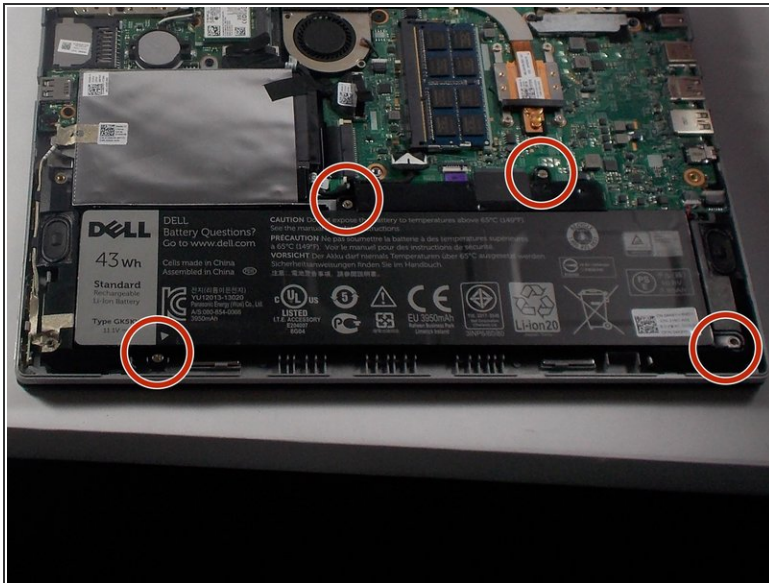
- Gently use a spudger to pull the cover away from the rest of the laptop. The cover will come off after you use the tool on two or three sides.

Step 4 — Battery



- ⚠ Make sure that the power is off.
- After taking off the back panel, you will see the battery located at the bottom of the computer system. It's black and is clearly labeled "dell battery".

Step 5



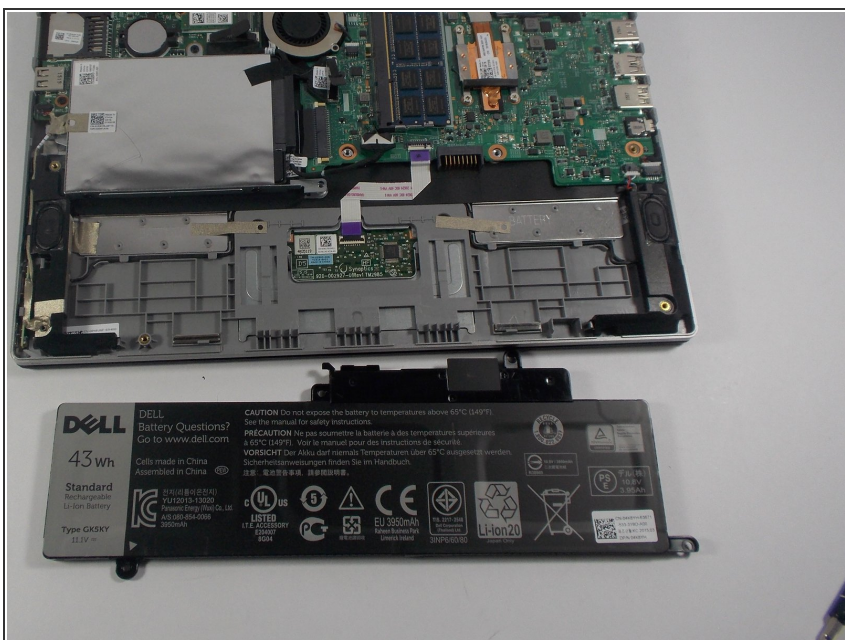
- Locate the battery at the bottom of the computer and remove the four 3mm screws with a Phillips #0 head that hold the battery down.

Step 6



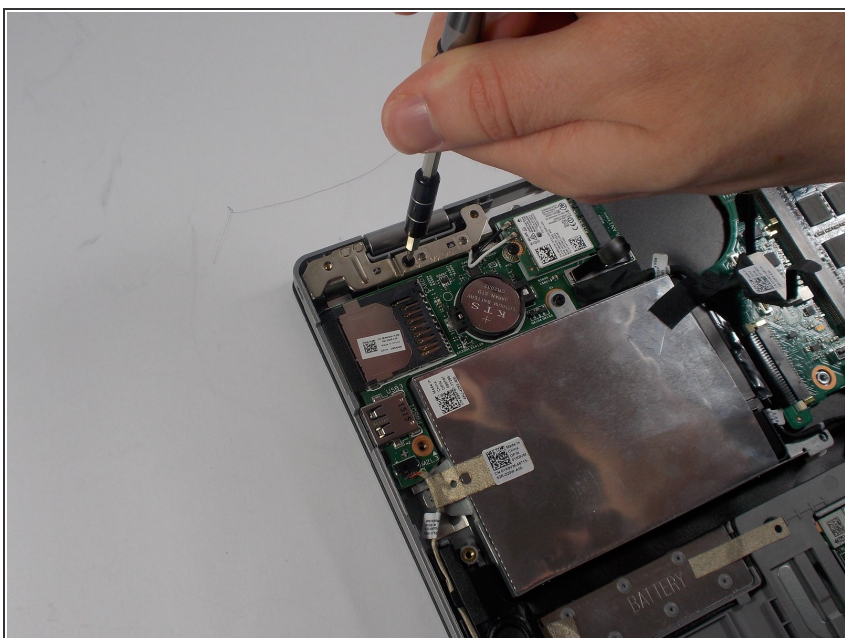
- Remove the Solid State Drive wire from the battery clip by detaching the wire.
- This can be done by gently pulling the connector away from the battery clip.

Step 7



- Remove the battery from the computer system by gently lifting it from the side.

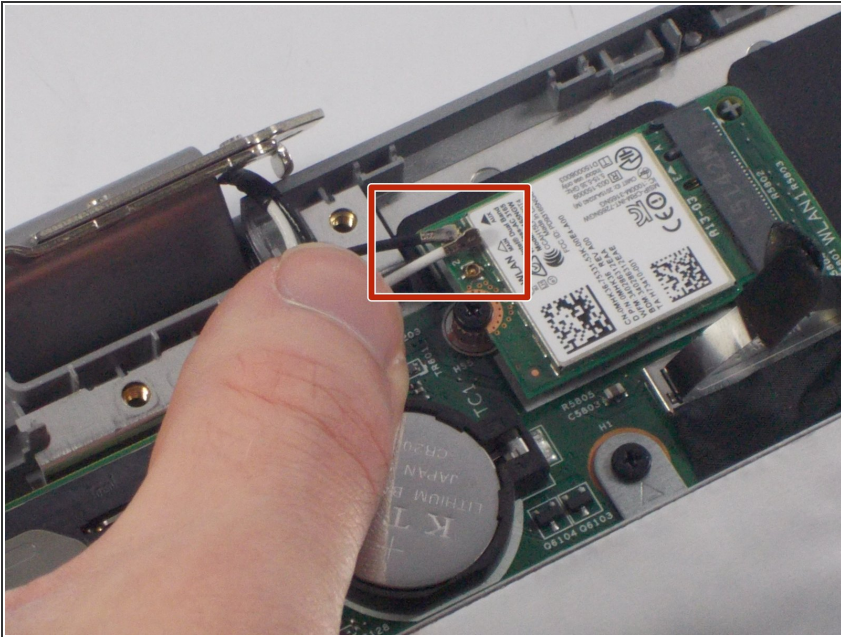
Step 8 — Screen



- Unscrew the brackets in the top right and top left of the laptop. Unscrew the two 1mm screw from both of the

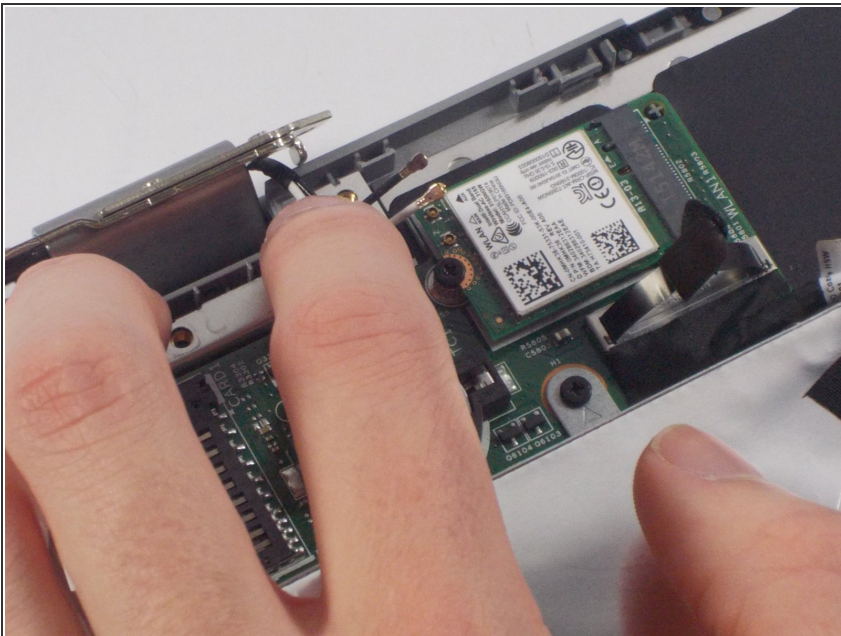
brackets on both sides with #0
phillips head.

Step 9



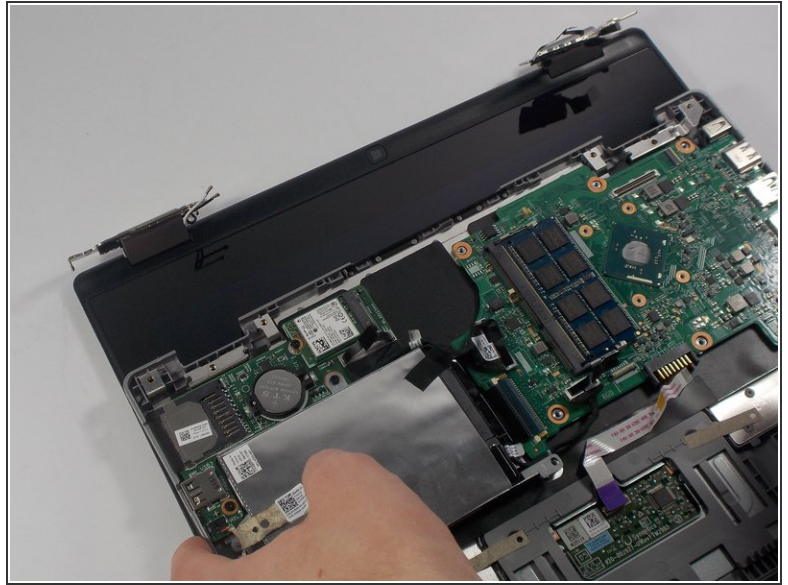
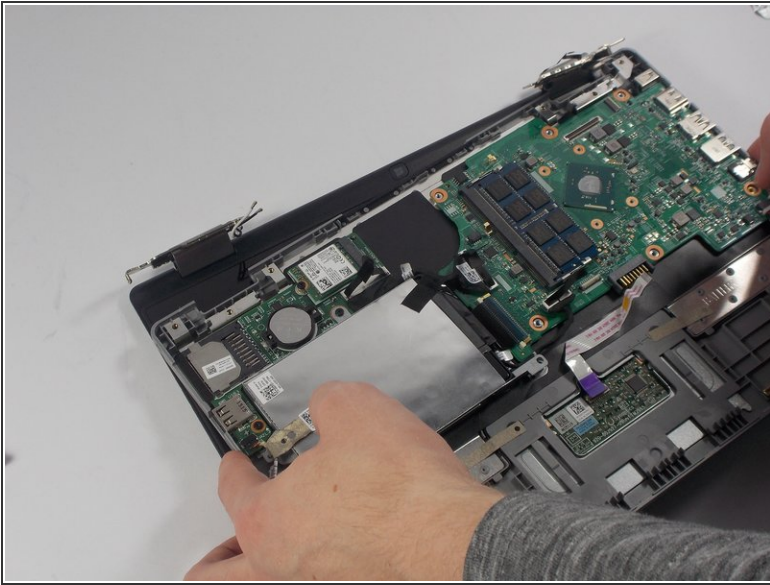
- Disconnect the aerial cables from the wireless controller by pulling them away from the laptop.

Step 10



- Push the brackets up on both sides with your hands or spudger.

Step 11



- At this point you can pull the bottom half of the computer away from the screen.
- The screen is now fully detached and ready to be replaced!

To reassemble your device, follow these instructions in reverse order.