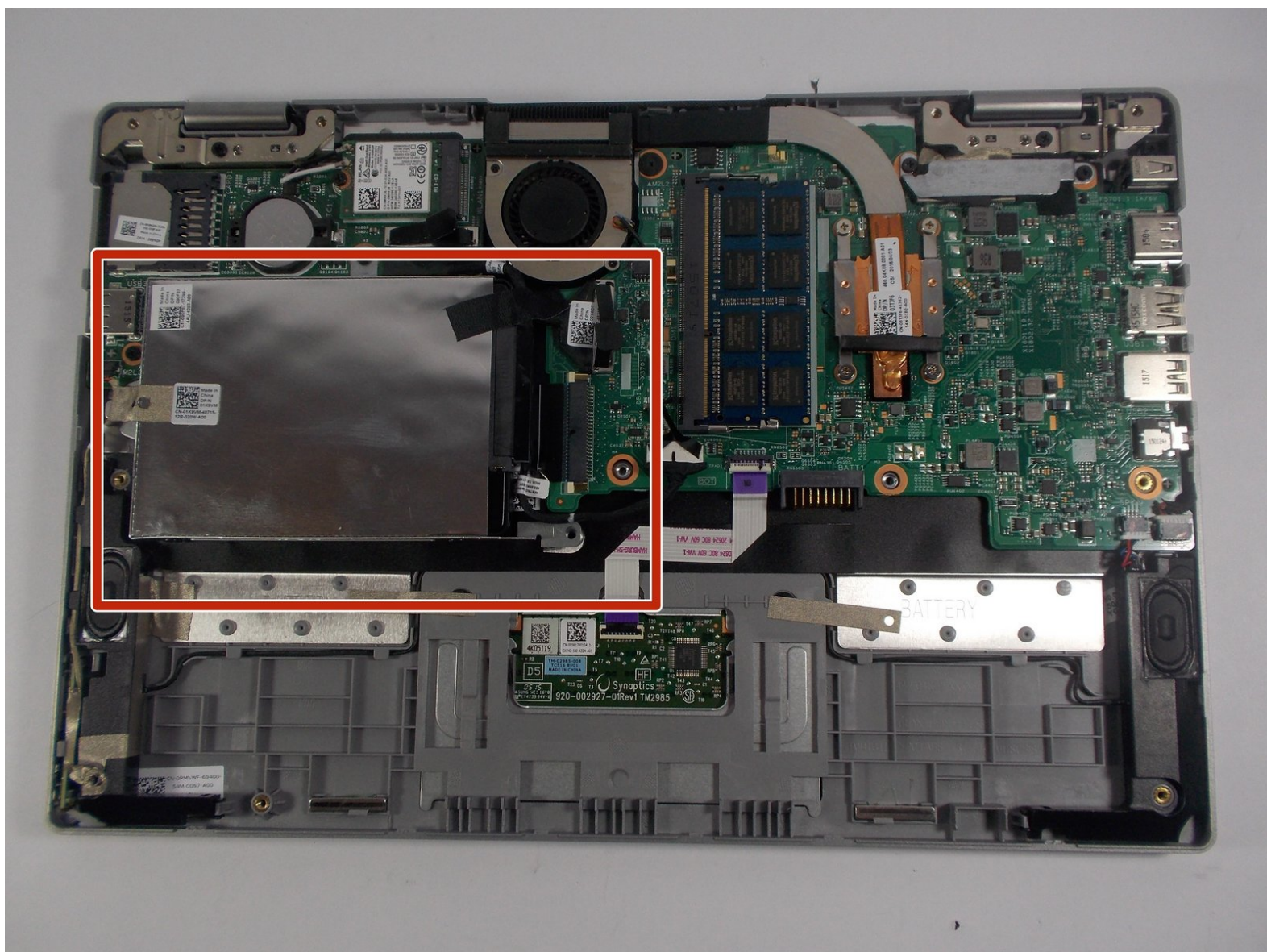




Dell Inspiron 11-3152 Solid State Drive Replacement

This guide will show you have to get to and remove the Solid State Drive.

Written By: derek odoi



INTRODUCTION

This guide will show you how to get to and remove the Solid State Drive. It is responsible for the storage of data and start up of your computer.



TOOLS:

- [Phillips #0 Screwdriver](#) (1)
 - [Spudger](#) (1)
-

Step 1 — Back Panel



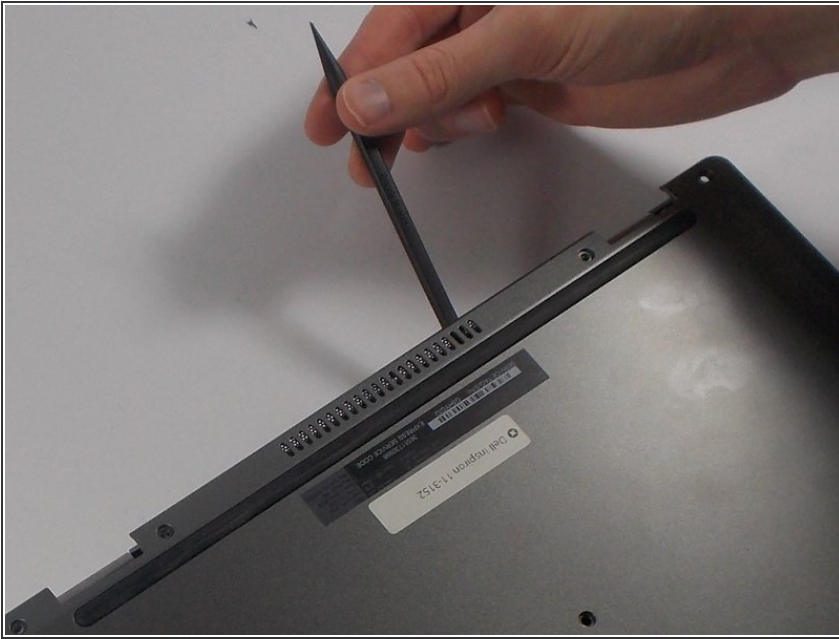
- Flip the computer over.

Step 2



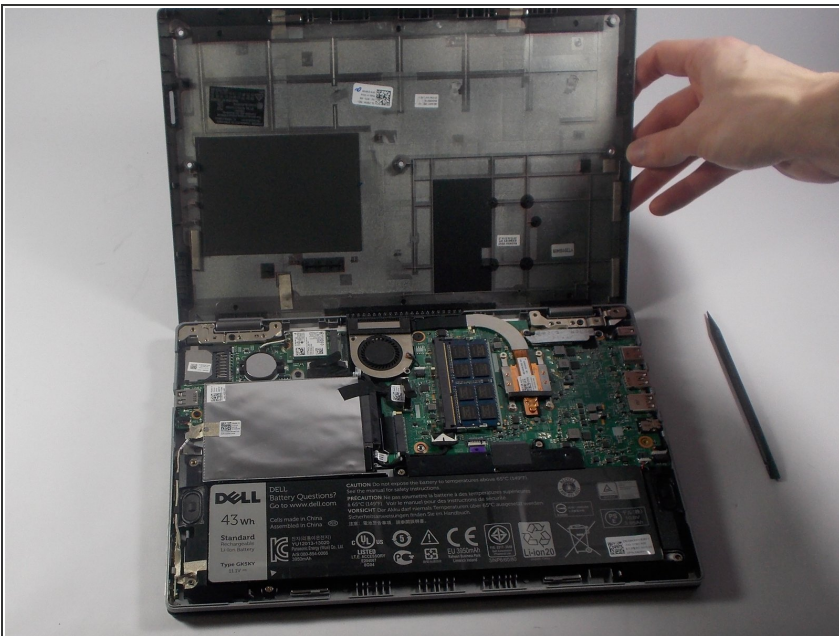
- Remove all nine 5mm Phillips head screws from the back cover using #0 Phillips head.

Step 3



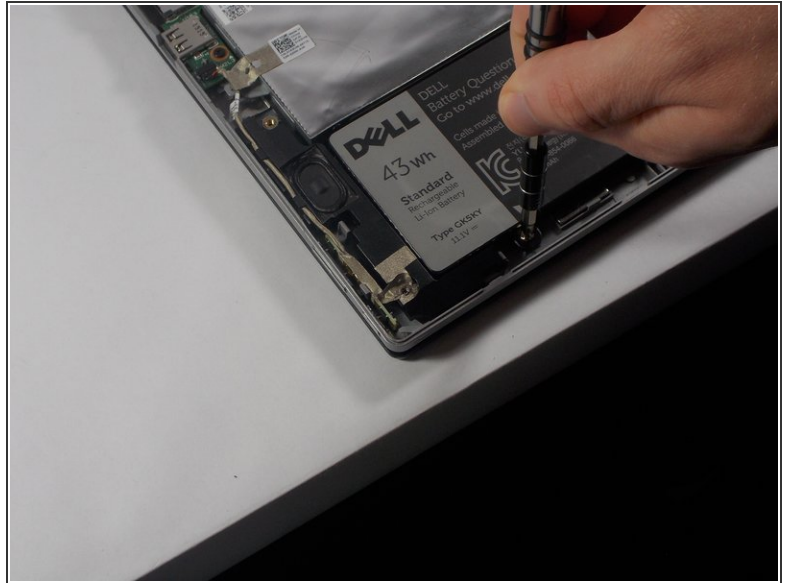
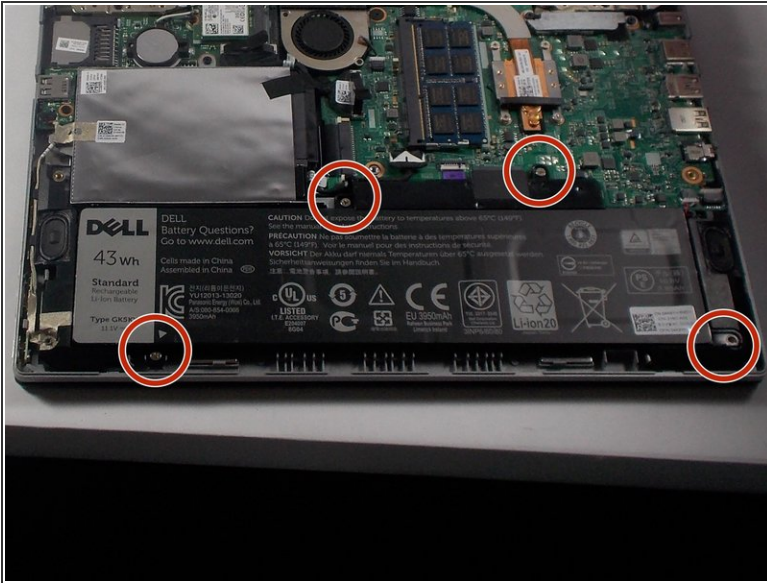
- Gently use a spudger to pull the cover away from the rest of the laptop. The cover will come off after you use the tool on two or three sides.

Step 4 — Battery



- ⚠ Make sure that the power is off.
- After taking off the back panel, you will see the battery located at the bottom of the computer system. It's black and is clearly labeled "dell battery".

Step 5



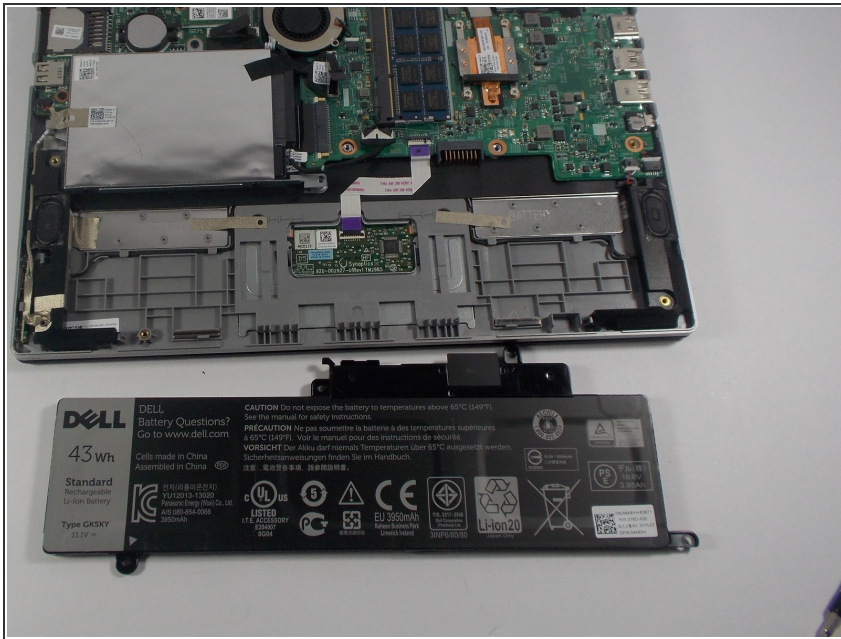
- Locate the battery at the bottom of the computer and remove the four 3mm screws with a Phillips #0 head that hold the battery down.

Step 6



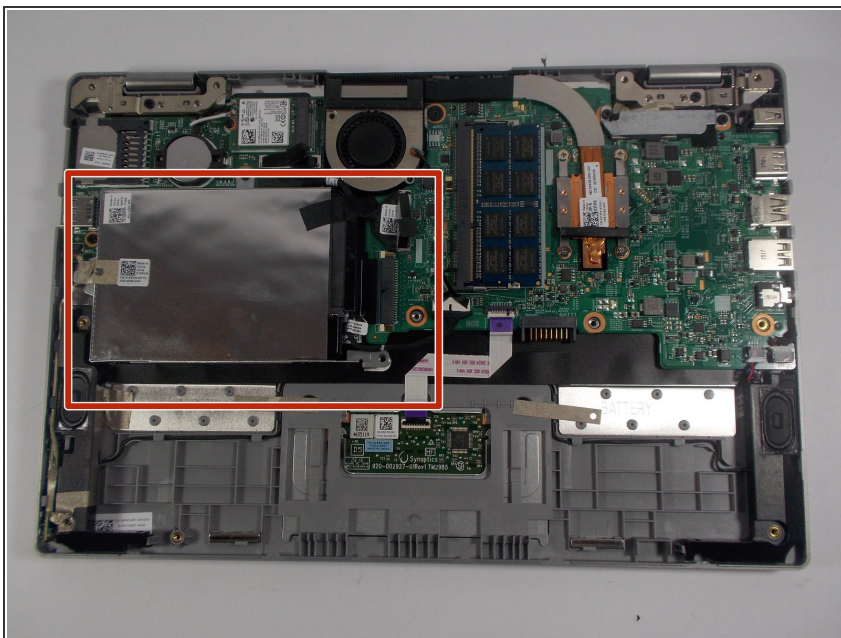
- Remove the Solid State Drive wire from the battery clip by detaching the wire.
- This can be done by gently pulling the connector away from the battery clip.

Step 7



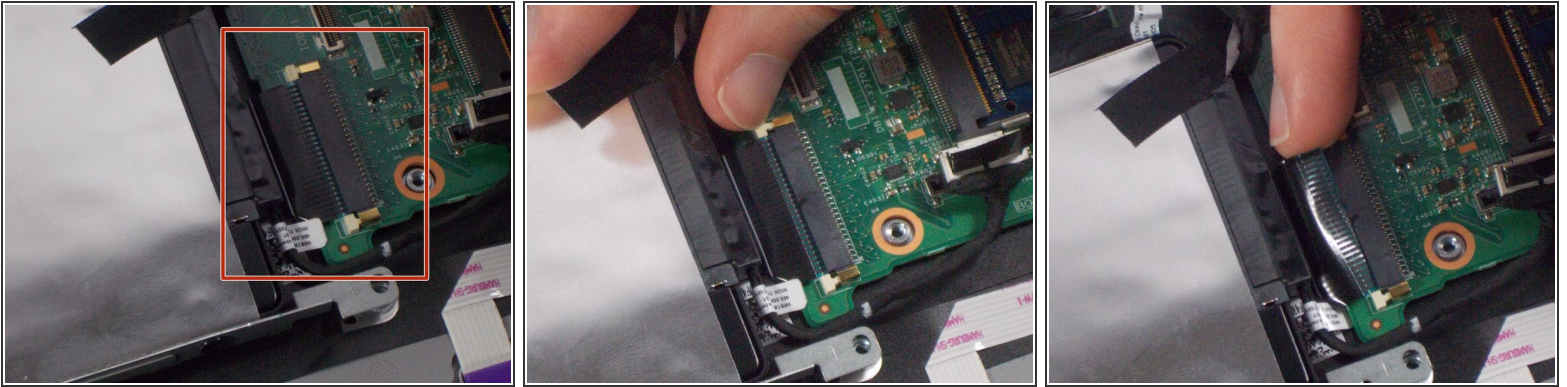
- Remove the battery from the computer system by gently lifting it from the side.

Step 8 — Solid State Drive



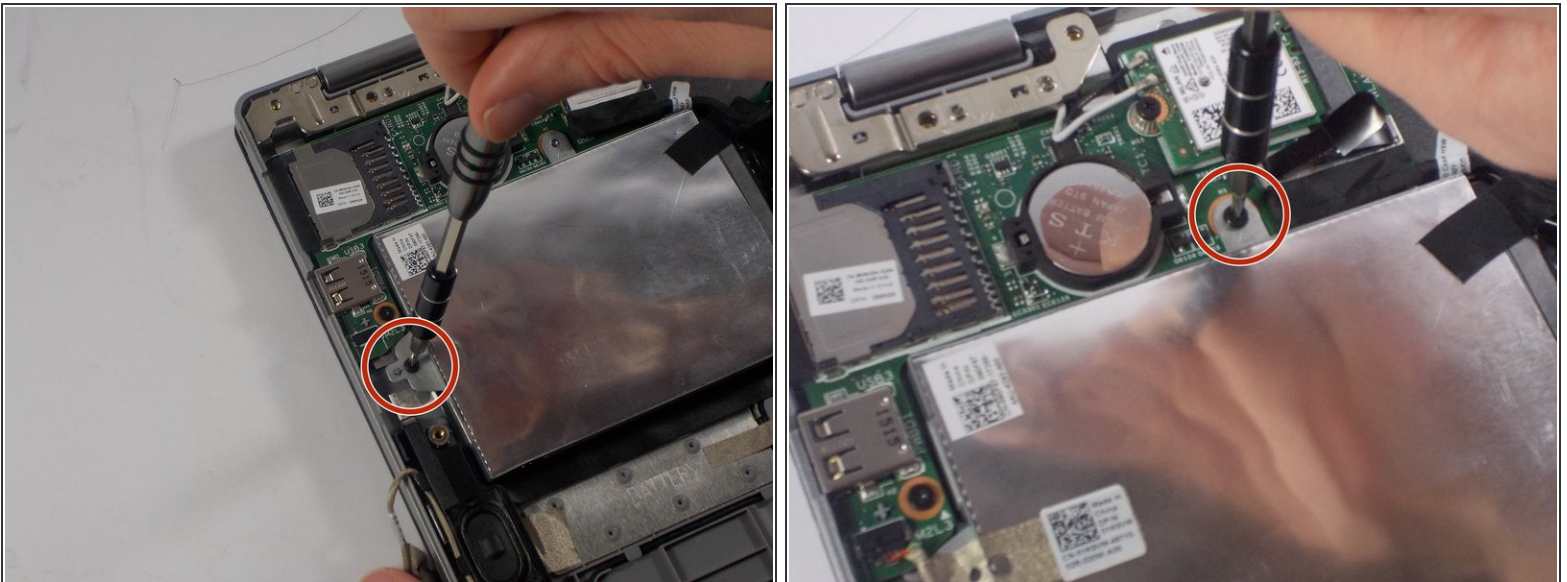
- The Hard Disk Drive is the silver box at the left middle portion on top of the battery.

Step 9



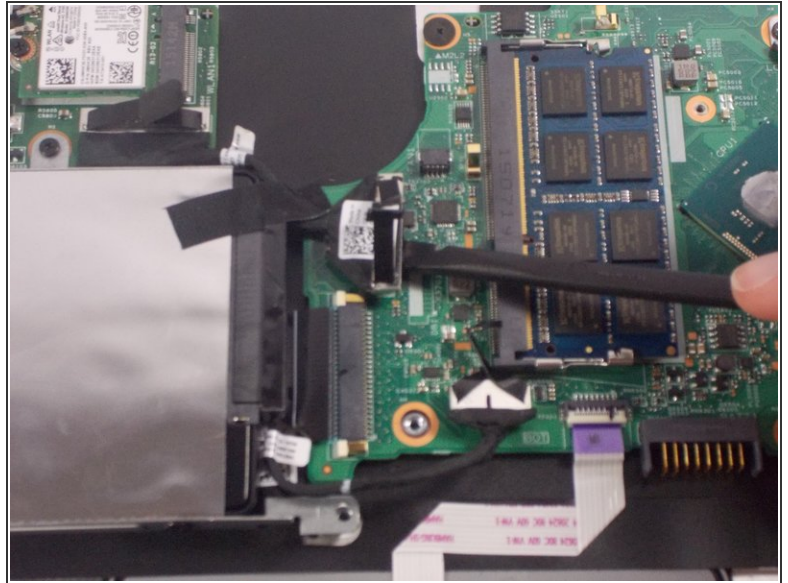
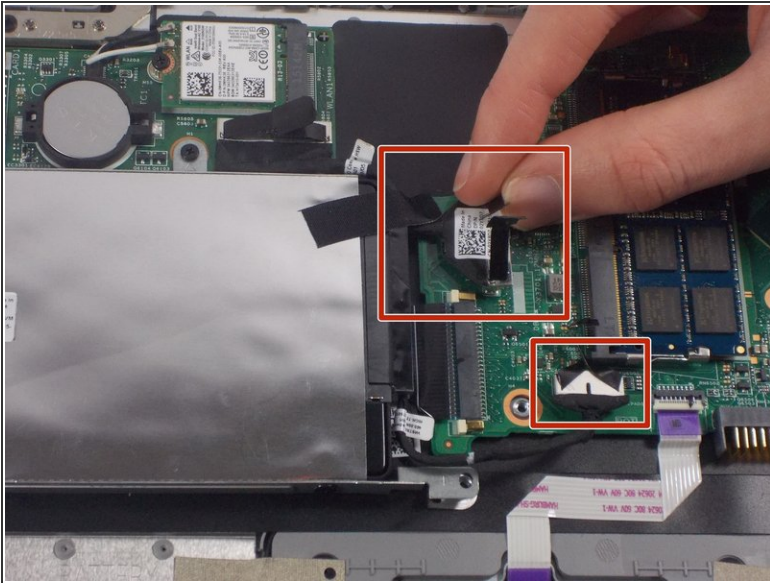
- Remove the no - fuss ribbon connector which connects the Solid State Drive to the motherboard.
- Pull the two white clips with your fingers to release the connector pins.
- After the pins have been opened, detach the ribbon connector by gently pulling it out from the port.

Step 10



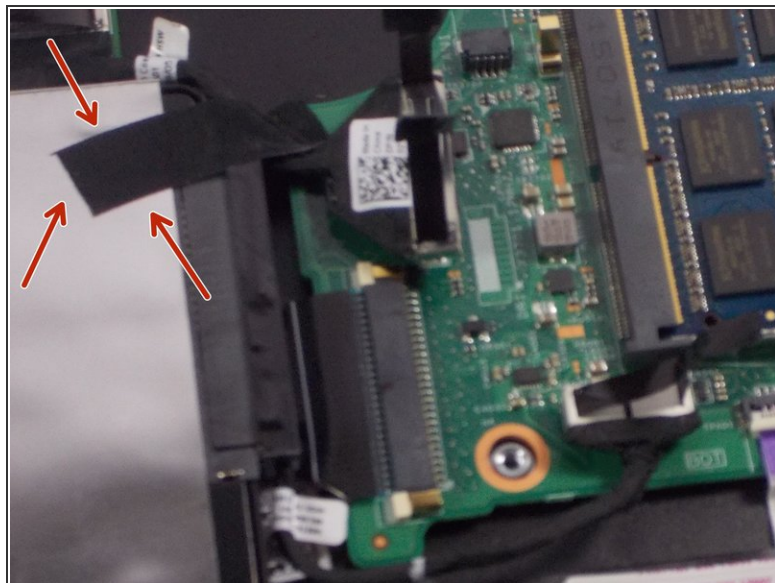
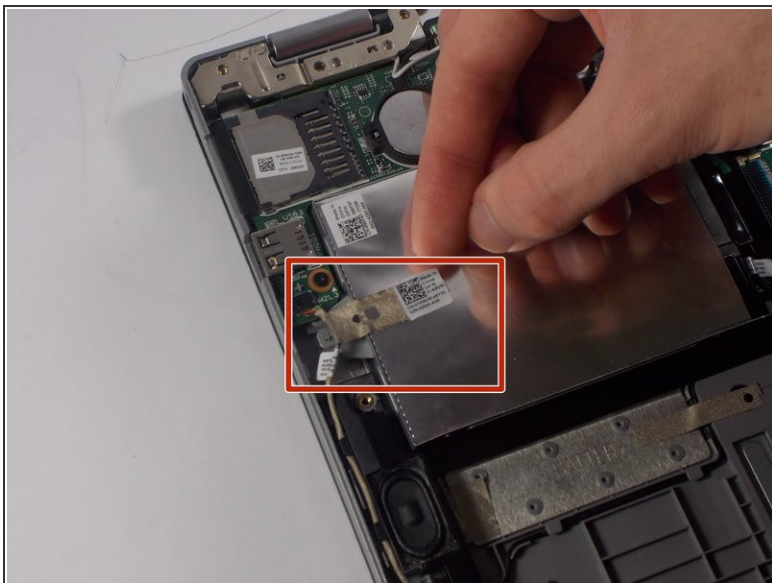
- Remove all three 2mm screws holding down the Solid State Drive by using a #0 Phillips head.

Step 11



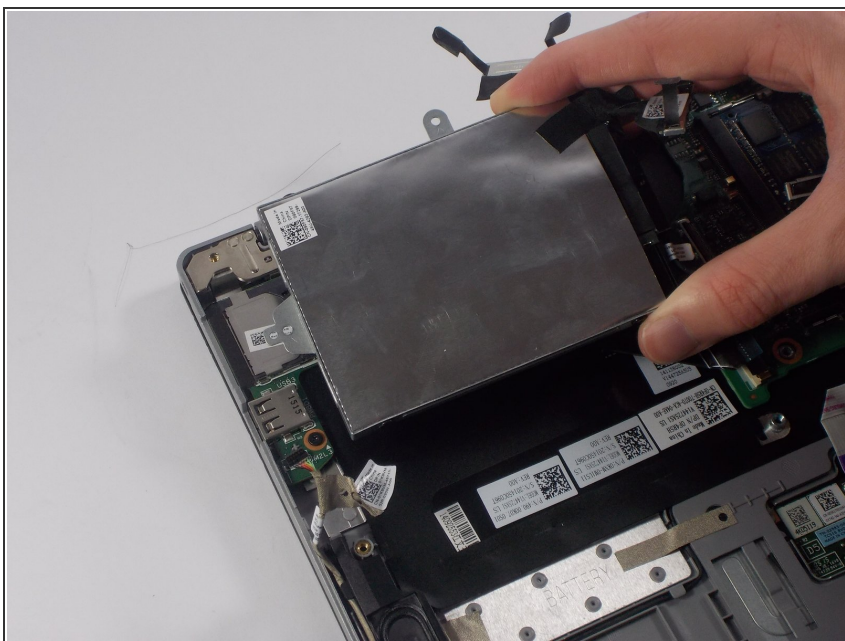
- Remove the two ZIF connectors , which connect Hard Disk Drive to the motherboard.
- Pull apart the black tape on top of the ZIF connector with fingers
- Pull the tape upwards with your fingers to remove the ZIF connector.
- If you are having trouble, use the spudger to pry it up.

Step 12



- Remove the tape attached to the Solid State Drive by simply pulling them off with fingers.

Step 13



- Remove the Solid State Drive by simply lifting it away from the laptop.

To reassemble your device, follow these instructions in reverse order.