



DeWalt DC970 Clutch Replacement

The clutch controls how fast the drill spins. This guide will show how to remove the clutch.

Written By: Jonathan Hamel



INTRODUCTION

If you are having trouble controlling the speed of the drill there may be a problem with your clutch. By following this guide you will learn how to replace it.

TOOLS:

- [T15 Security Torx Screwdriver](#) (1)
 - [Torque Wrench](#) (1)
-

Step 1 — Battery



- Compress the buttons on either side of the battery and lift the drill away from battery.

Step 2



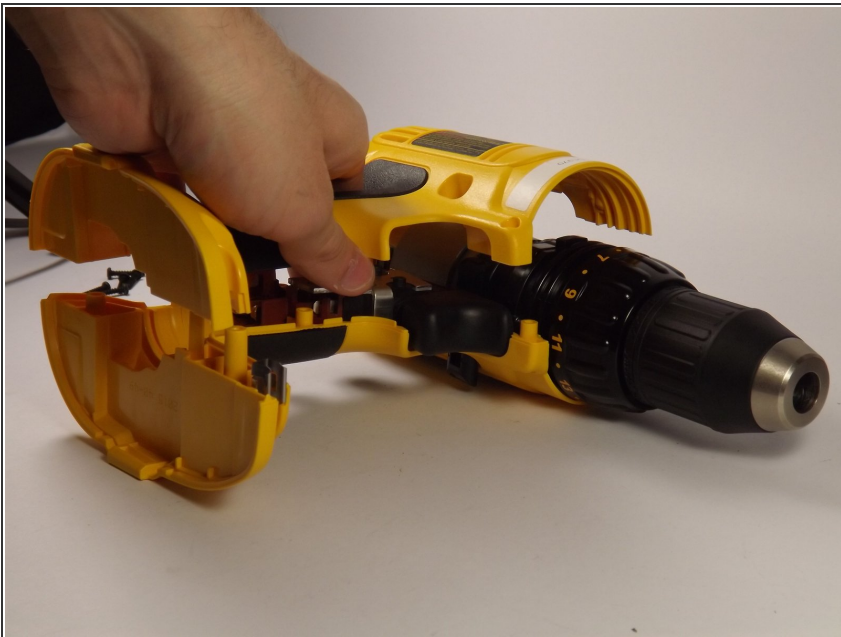
- Remove battery from drill.

Step 3 — Drill Assembly



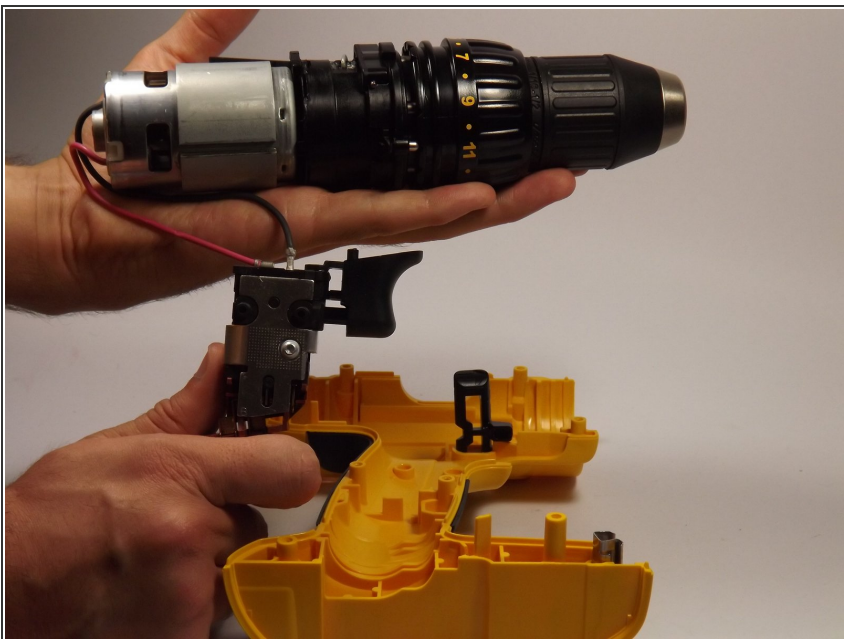
- Remove the eight 16 mm, Torx Security #15 screws.

Step 4



- Lay the drill on its side and gently lift the top half off it.

Step 5 — Clutch



- Lift drill mechanism from the drill assembly.

Step 6



- Twist slightly and pull clutch away from motor.
- Remove clutch.

To reassemble your device, follow these instructions in reverse order.

This document was generated on 2020-11-28 05:07:43 AM (MST).

