



Sony SRS-X7 Antenna Replacement

This guide will show you how to replace the antenna of the speaker so you can use the AM/FM radio.

Written By: Tyler Lamar



INTRODUCTION

Follow this guide in order to replace the antenna to your device. The antenna is necessary in order for you radio feature to work on the device. If the antenna is broken, you cannot find signal to any AM/FM stations in your area.



TOOLS:

- [Pro Tech Toolkit](#) (1)



PARTS:

- [Sony SRS-X7 Antenna](#) (1)


Step 1 — Sony SRS-X7 Faceplate Disassembly




- On the bottom of the device, you'll see 4 rubber pieces at the corners. Peel off these rubber pieces.
- Unscrew the 4 10mm Philips J1 screws beneath them.

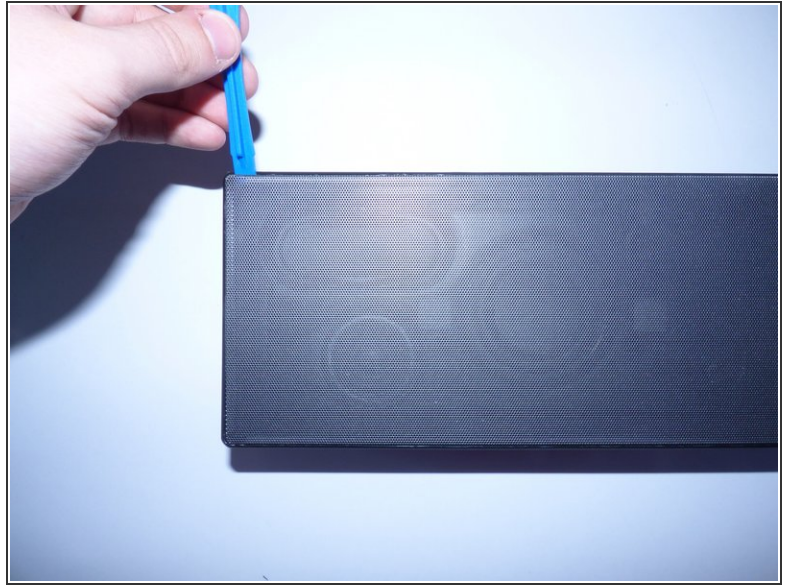
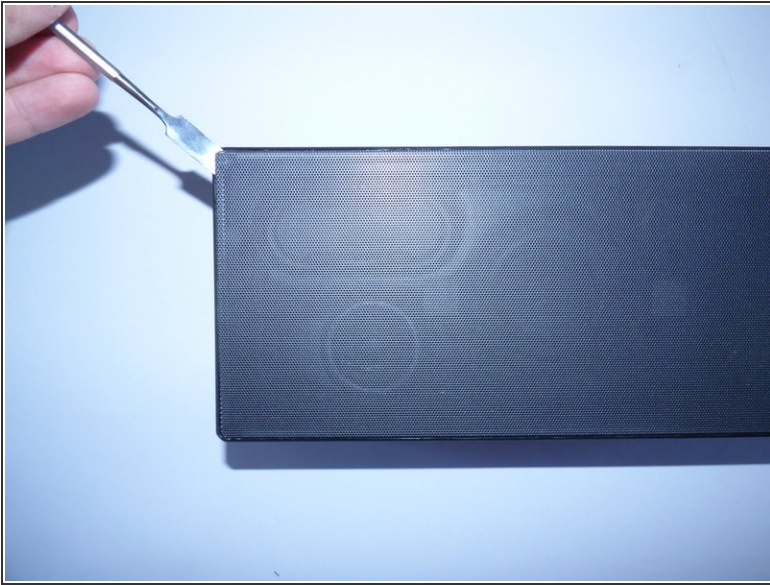
Step 2



 The black stickers between the 4 foam pieces are there to protect the unit's warranty. If you try to send the device back to Sony after poking through said stickers, they will not accept it as the device has been tampered with.

- Poke through said stickers and unscrew the 2 10mm Philips J1 screws beneath those.
 - Insert the blue plastic tool into the corner of the bottom faceplate and slide along the edge.
-  It will be a bit difficult as there is adhesive holding the faceplate to the unit, but with a bit of playing it should come off with ease.

Step 3



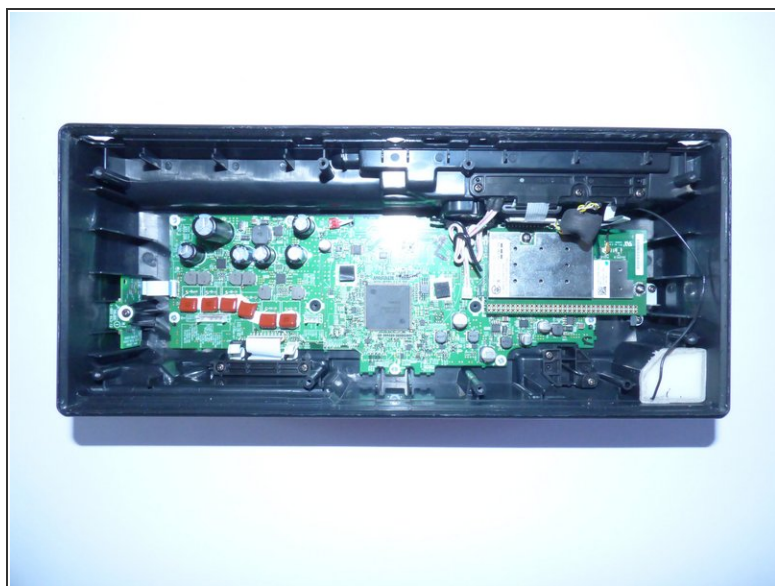
- Using a metal spudger, insert it into one of the corners or sides of the unit's faceplate and lightly pry open.
 - While pried, insert a plastic opening tool and slide along the edges of the unit.
 - Repeat the last step on each side of the unit's faceplate, until the faceplate is off.
- i** The first time you attempt to take the faceplate off of the speaker, it will be difficult because there is adhesive holding it to the unit. After this time, disassembly and reassembly should be easier.

Step 4



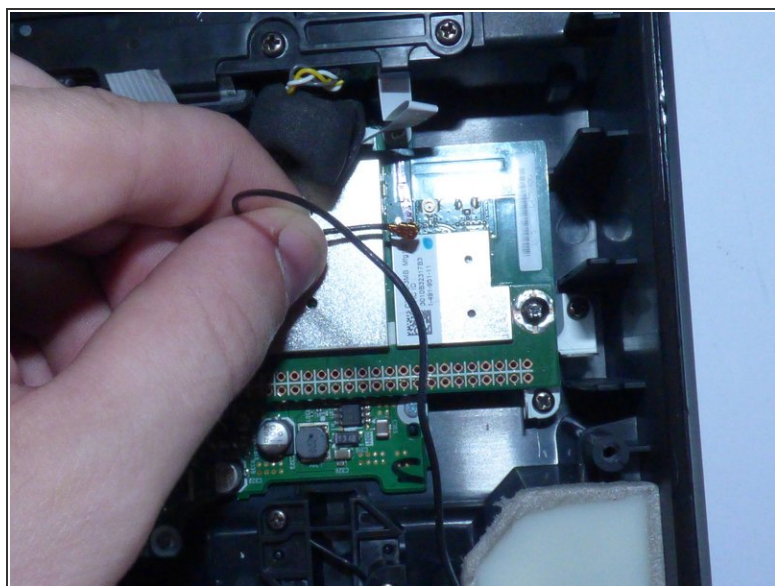
- With the faceplate now off, the speakers should be revealed. There should be 8 visible screws around the border of the speakers. Remove the 8 10mm Philips J1 screws.
- Take the 2 20mm Philips J1 screws out of the middle of the speaker as shown.

Step 5



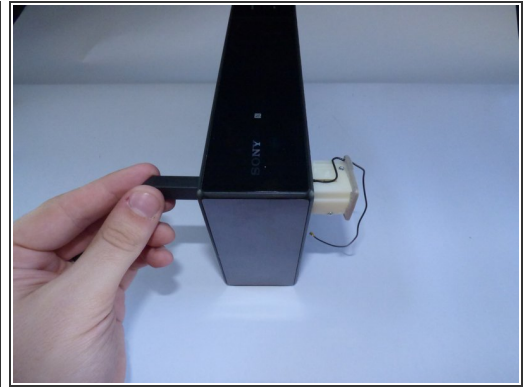
- ⓘ The speaker should come out of the unit with ease, however you should use caution as it is still connected to the motherboard.
- Take the whole speaker out, and disconnect the connectors from the motherboard by lightly pulling on them.

Step 6 — Antenna



- Take the gold connector off the motherboard of the device.

Step 7



- Stand the antenna in the upright position.
- Unscrew the 10mm Philips J1 screw beneath the antenna.
- Push the antenna through the inside of the unit to remove it.