



Toshiba Portege R205-S209 Keyboard Replacement

This guide will walk you through replacing the keyboard on your Toshiba Portege laptop if your keys are missing, malfunctioning or not working at all.

Written By: Leah Catania



INTRODUCTION

Replacing the keyboard on your laptop may seem daunting at first, but it is actually a relatively simple component to remove and replace. With the use of a few tools and about fifteen minutes of work, you can have a new keyboard up and running for your laptop.

TOOLS:

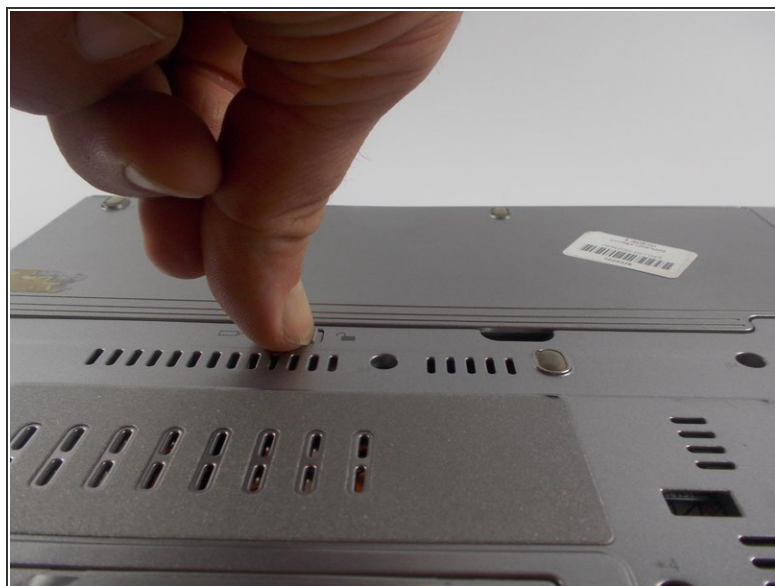
- [Phillips #00 Screwdriver](#) (1)
 - [iFixit Opening Tools](#) (1)
-

Step 1 — Battery



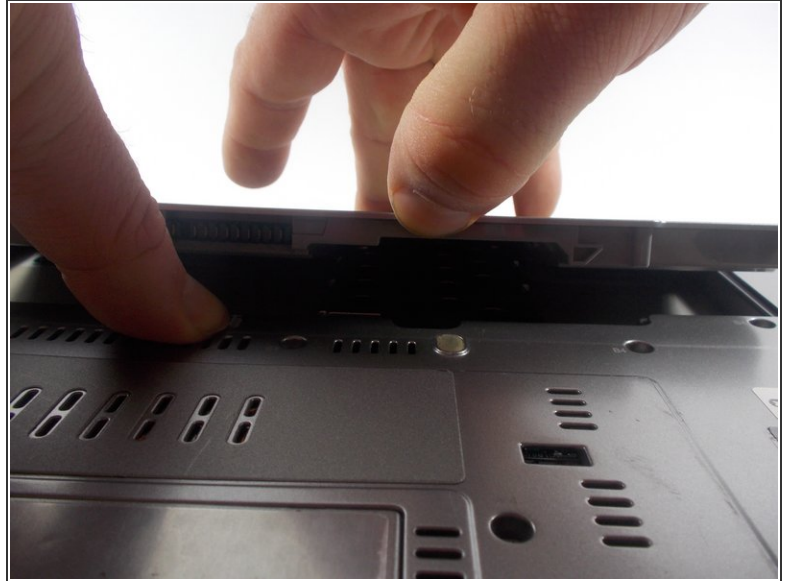
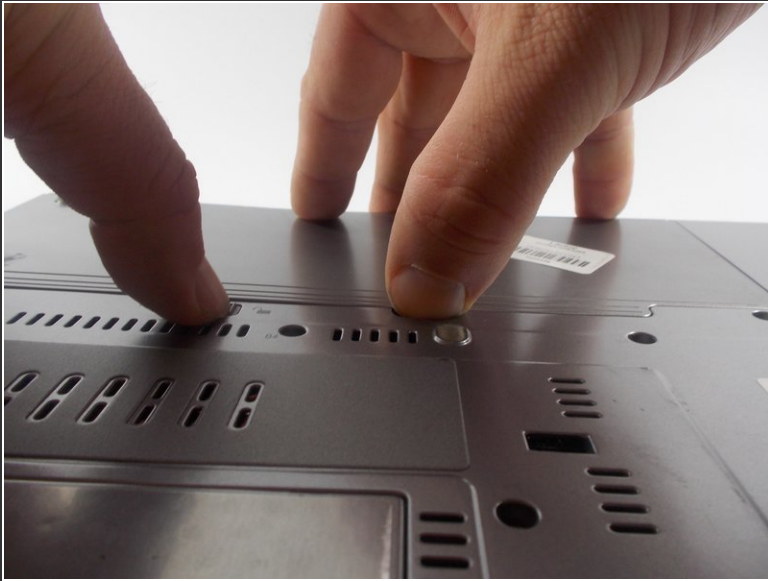
- Flip the laptop over. Keep the front end facing away from you, so the battery appears at the top.

Step 2



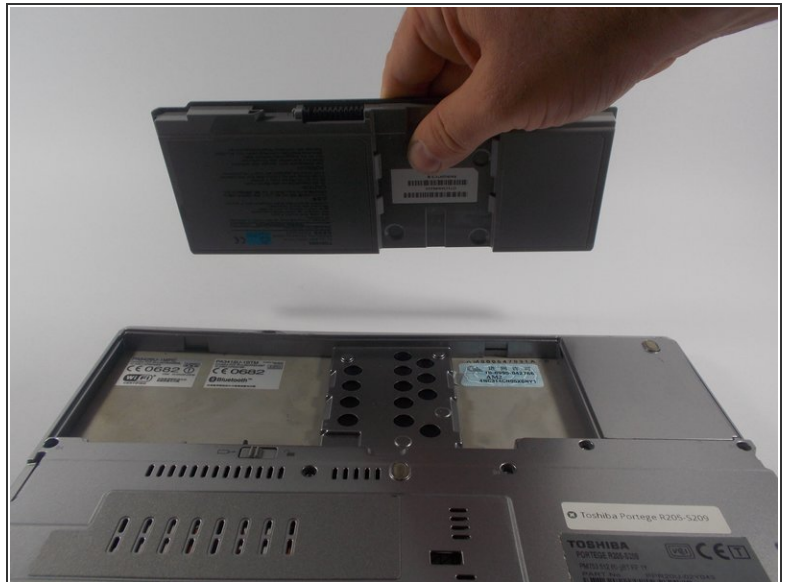
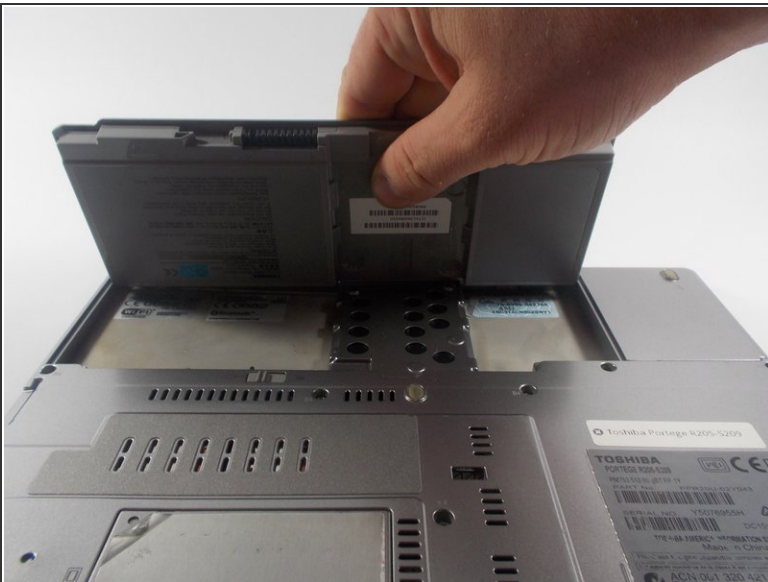
- Slide the locking mechanism to the right and hold.

Step 3



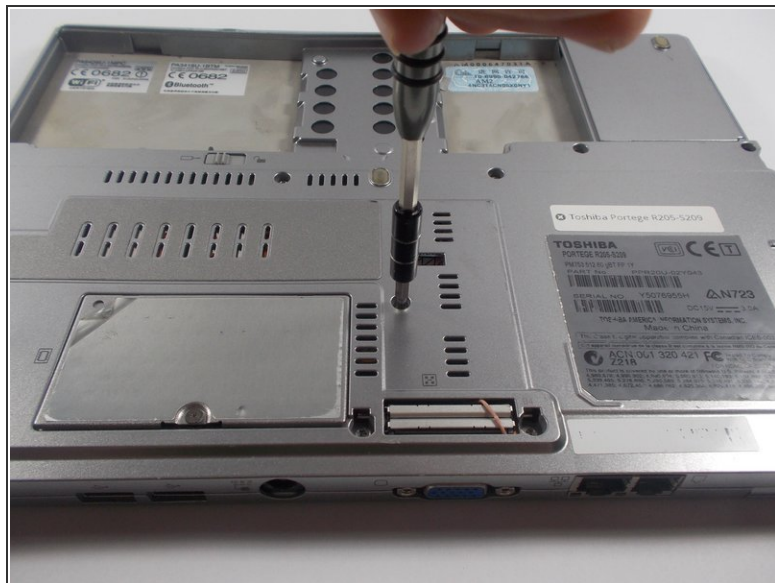
- While holding the locking mechanism to the right, insert your finger into the tab and lift up.

Step 4



- Remove battery by lifting upward.

Step 5 — Keyboard



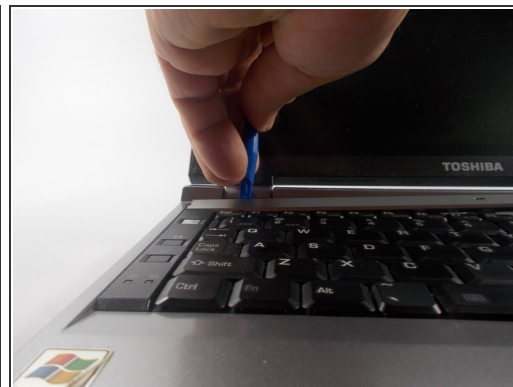
- Remove the 4mm Phillips head screw in the middle of the laptop with a Phillips head #00 screwdriver.

Step 6



- Flip the laptop over and open the display.

Step 7



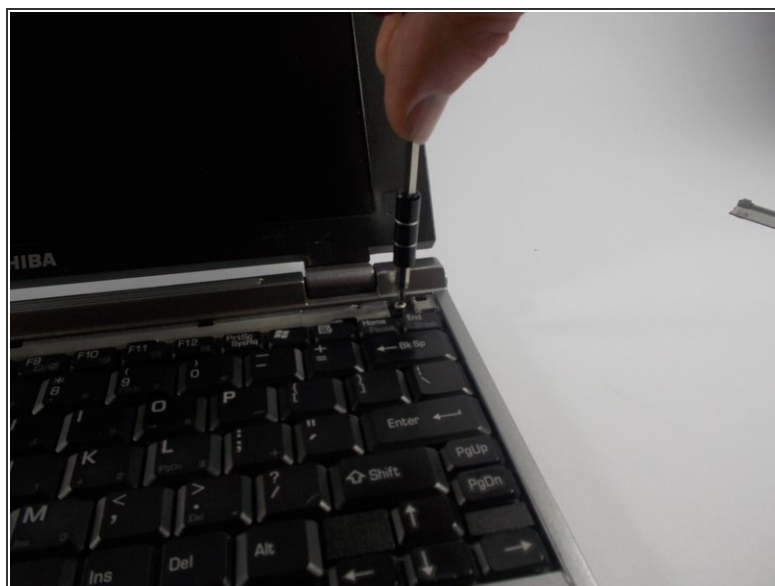
- Remove the plastic casing above the keyboard with the plastic opening tool. Start at the edges of the plastic casing and move toward the middle.

Step 8



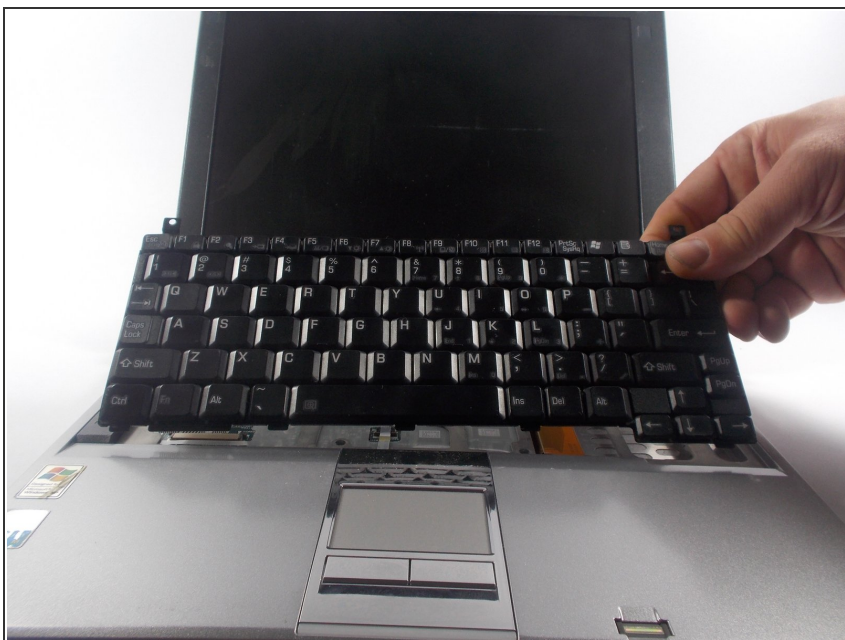
- Lift up and remove the plastic casing.

Step 9



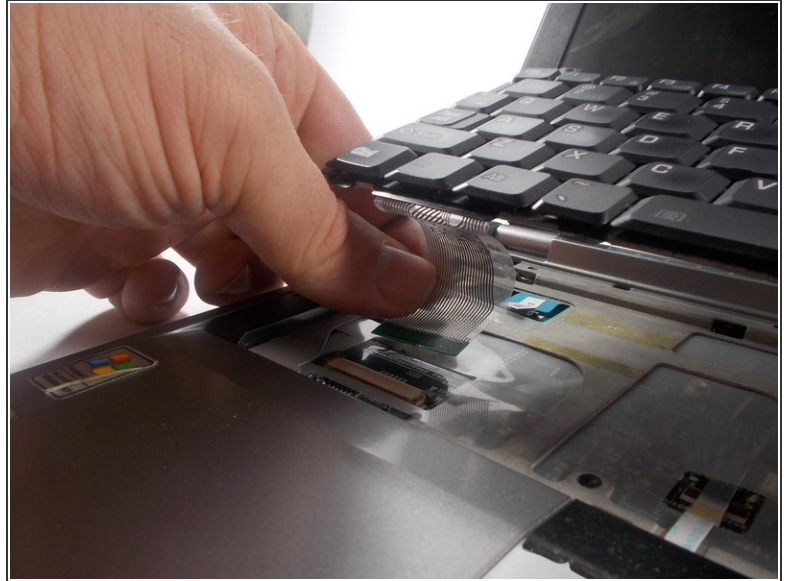
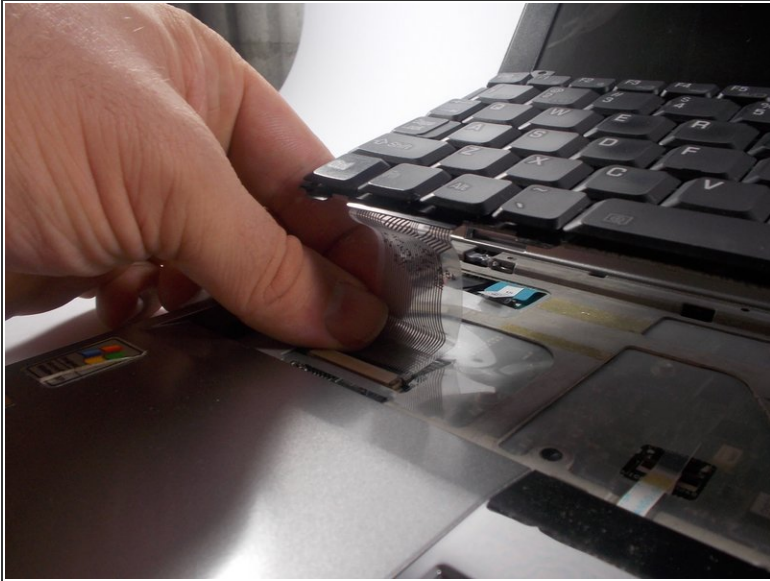
- Remove the 4mm Phillips head screws at the top of the keyboard at both ends, using the Phillips head #00 screwdriver.

Step 10



- Lift up the keyboard, but do not remove it completely.
- ⚠ The keyboard is still attached to the computer, so be very careful when lifting it up.

Step 11



- Gently pull the ribbon toward the screen until it slides out of the connecting point.
- Remove keyboard.

To reassemble your device, follow these instructions in reverse order.