



Lenovo Flex 3-1120 Bottom Panel Replacement

Prerequisite Only

Written By: Geoff Bentz



INTRODUCTION

This guide will illustrate how to remove the back panel.



TOOLS:

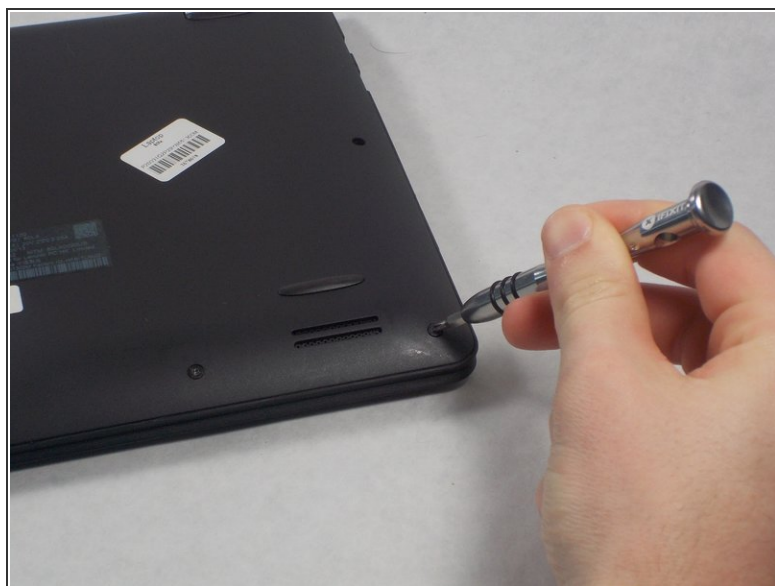
- [Phillips #0 Screwdriver](#) (1)
 - [iFixit Opening Tools](#) (1)
-

Step 1 — Bottom Panel



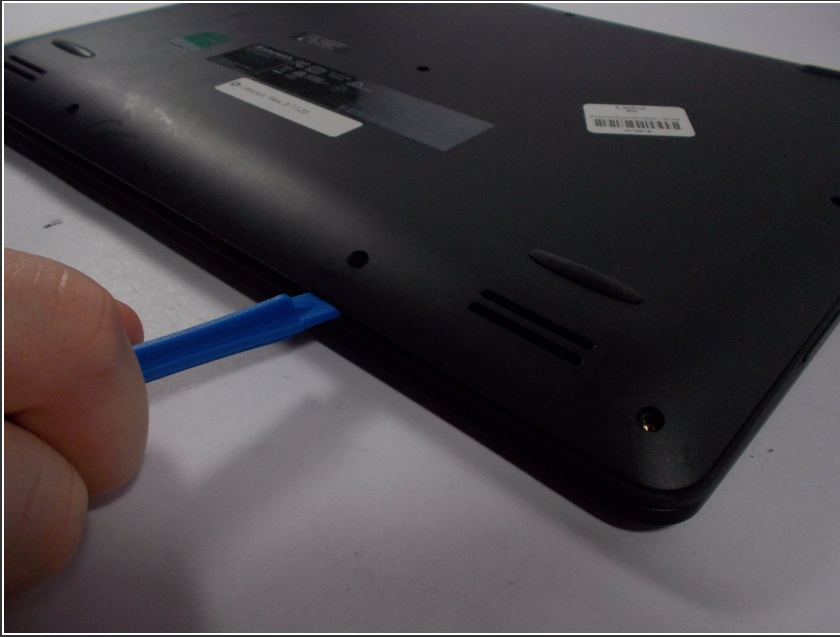
- Lay the computer down with the bottom panel facing up.

Step 2



- Locate the ten 6mm Phillips screws along the edges and in the center of the back panel.
- Remove all ten 6mm Phillips screws with a size 0 Phillips screwdriver.

Step 3



- Wedge the plastic opening tool into the small space under the back panel.
 - Use the plastic opening tool as a lever to separate the bottom panel from the computer.
 - Slide the tool along the edges of the computer until the bottom panel is completely separated.
- i** You may start prying the bottom panel on any edge.

Step 4



- Lift the bottom panel off of the computer.

To reassemble your device, follow these instructions in reverse order.