



# 2007-2011 Toyota Camry Sun Visor Replacement

This guide will explain how to remove the lever arm from the sun visor, repair, and reinstall for a Toyota Camry back to functioning condition.

Written By: Kimberly Reilly



## INTRODUCTION

2007-2011 Toyota Camry's were installed with a sun visor that was later recalled due to a defect in the inner plastic body. The two halves of the visor that connect around the lever arm begin to pull away from the arm that attaches it to the interior of the car. Making the arm unable to hold the visor in place effectively, increasing the risk of it obstructing the view of the driver. Over time most visors even fall off the connecting arm completely. This guide provides a simple fix to the defect, providing a way to reinforce the faulty connection that is causing the problem. Follow our guide with the step-by-step process to insure that it will be fixed correctly.



### TOOLS:

- [Flathead 3/32" or 2.5 mm Screwdriver](#) (1)
- [Phillips #2 Screwdriver](#) (1)
- [Seam Ripper](#) (1)
- [upholstery glue](#) (1)
- [3/4 phillips head screw](#) (1)
- [3 1/8 in x 7 in tie plate](#) (1)



### PARTS:

- [2007-2011 Toyota Camry Sun Visor](#) (1)



## Step 1 — Sun Visor



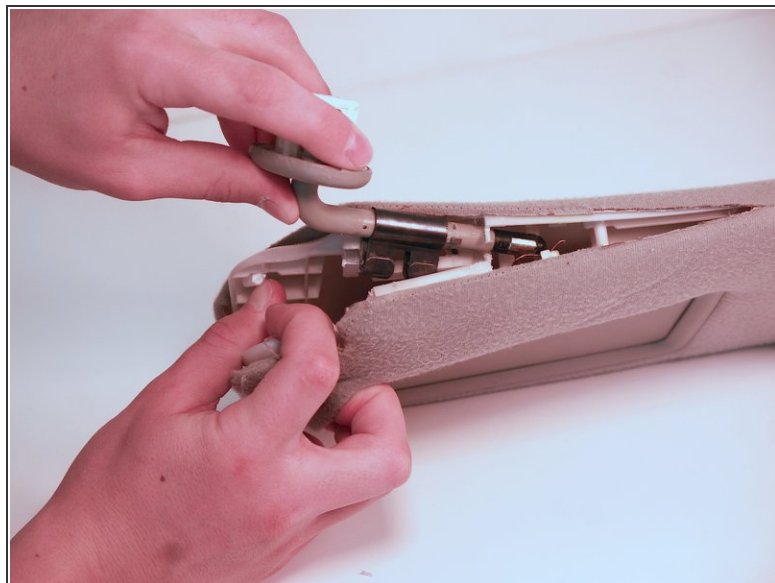
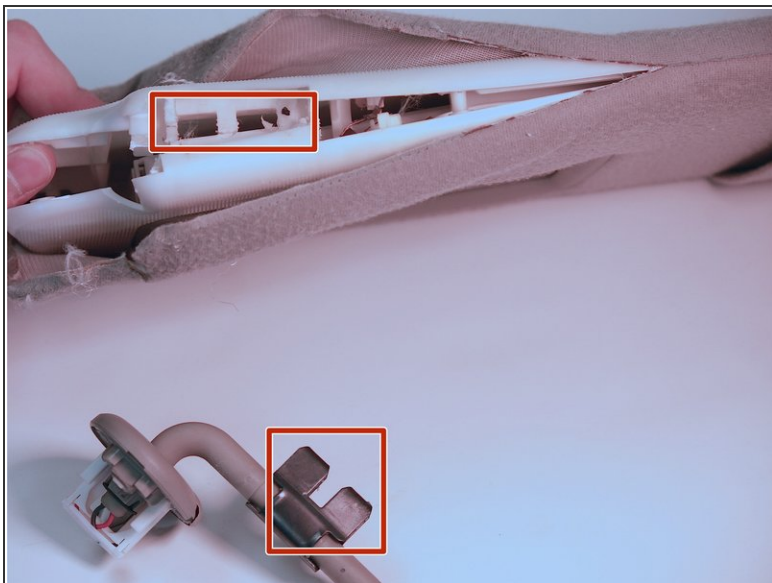
- Remove cap and squeeze metal brackets revealed underneath to loosen and remove from interior of car.
- ⓘ Make a note of where the clips of the lever arm fit into the interior of car for reinstatement of the visor later.

## Step 2



- Tear open the seam surrounding the hole that the swing arm inserts into with a seam ripper.
- Pull the fabric back to show the inner casing.

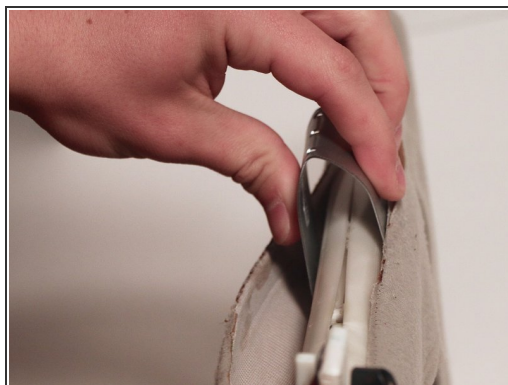
## Step 3



- Reinsert the swing arm back into the visor, make sure the metal prongs on the swing arm line up with the holes on the visor.

**i** The red squares show where the metal prongs fit into the holes of the visor.

## Step 4

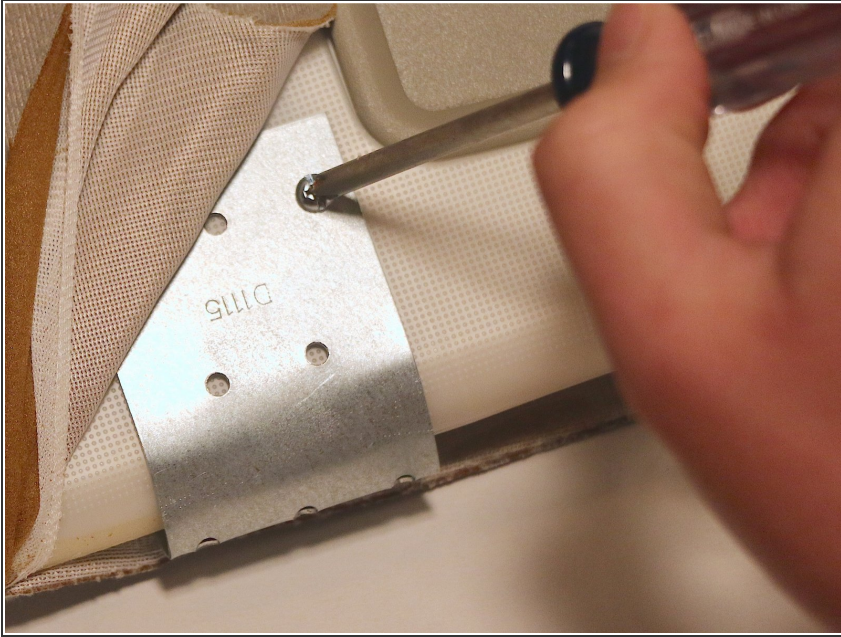


- Fold the aluminum plate around the outer casing to reinforce the arm in the casing.

**i** The metal plate will hold both halves of the visor to the lever arm, so make sure it is secured tightly around visor to keep it together.



## Step 5



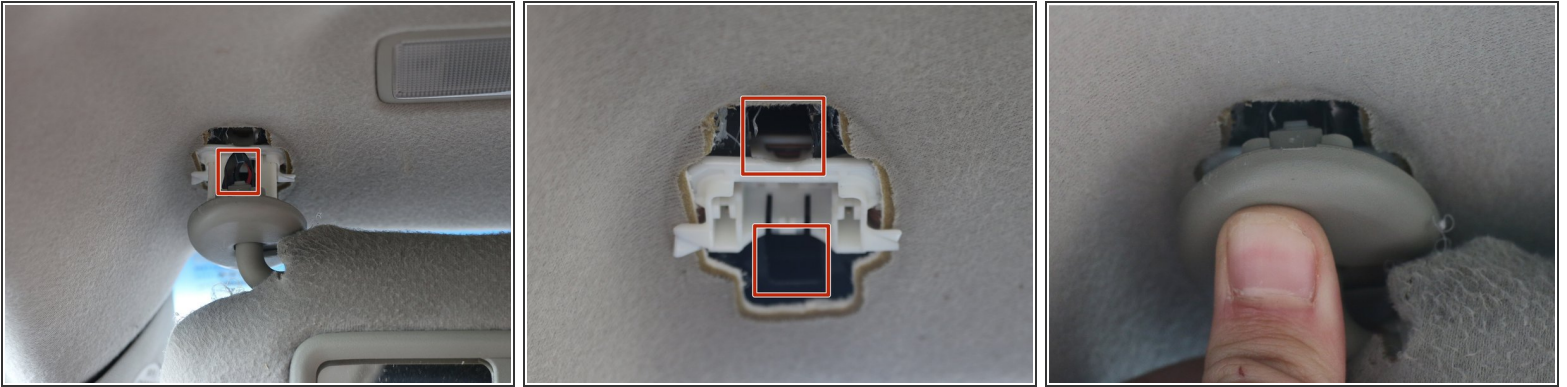
- Screw a one inch screw through the metal plate and plastic casing using a phillips head screwdriver.
- ⓘ Make sure screw goes all the way through to the other side to effectively secure plate to visor.

## Step 6




- Adhere the two halves of the torn seam back together over the outer casing and the aluminum plate using upholstery glue.
- ⓘ Allow the glue to properly dry before replacing visor back into car.

## Step 7



- Realign the metal clips of the swing arm to the hole in the car and snap the visor back into place.

 If you go back to step one, the hinges are marked to show where the insert the swing arm.

To reassemble your device, follow these instructions in reverse order.