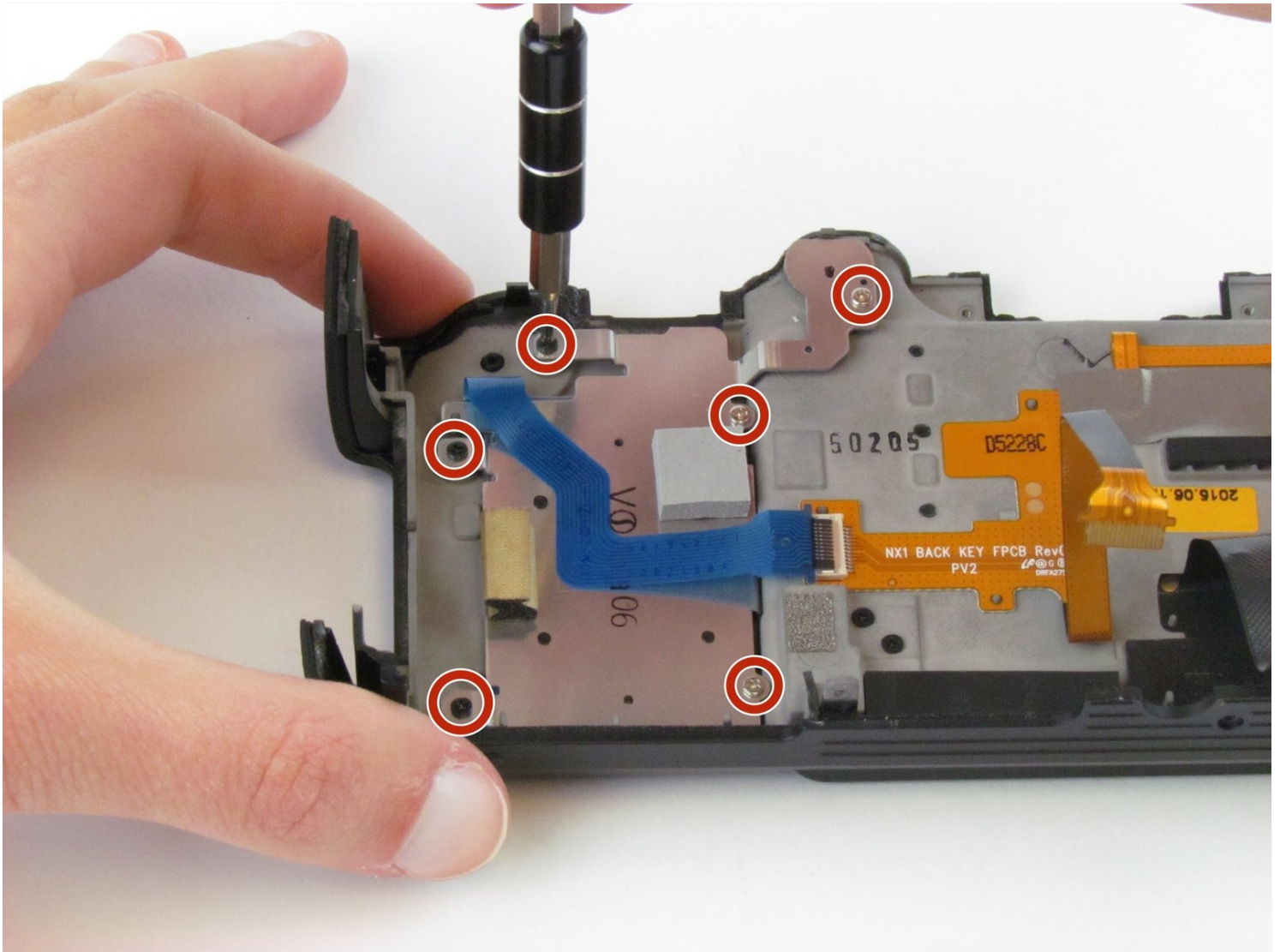




Samsung NX1 Navigation Buttons Replacement

Navigation buttons are used to operate the...

Written By: Hannah Patrick



INTRODUCTION

Navigation buttons are used to operate the camera and its various settings and features.

TOOLS:

Phillips #00 Screwdriver (1)

Tweezers (1)

Spudger (1)

Step 1 — Viewfinder Focus Dial



- Push the rubber viewfinder grip upward.

Step 2



- Use the Phillips #00 screwdriver to remove one 6.4 mm screw in the center of the dial.
- Remove the dial by lifting upward with your fingers.

Step 3 — Back Cover



- Use the Phillips #00 screwdriver to remove the four 5.5 mm screws surrounding the viewfinder.
- Use your fingers to lift the plastic viewfinder cover upward.

Step 4



- Use the Phillips #00 screwdriver to remove the two 5.5 mm screws from the right side of the camera above the SD card port.

Step 5



- Use the Phillips #00 screwdriver to remove one 5.5 mm screw on the left, above the HDMI port.

Step 6



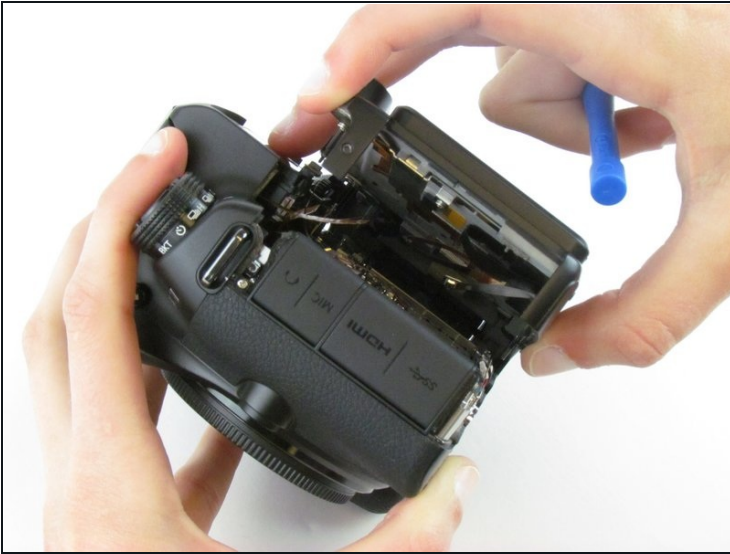
- Use the Phillips #00 screwdriver to remove the five 5.5 mm screws from the bottom, near the battery compartment.
- Use the Phillips #00 screwdriver to remove one 3.8 mm screw from the bottom of the hand grip, below the battery compartment.

Step 7



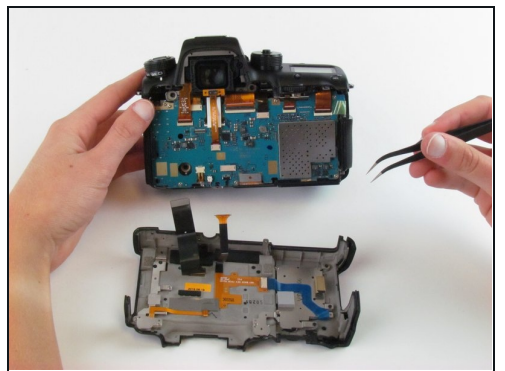
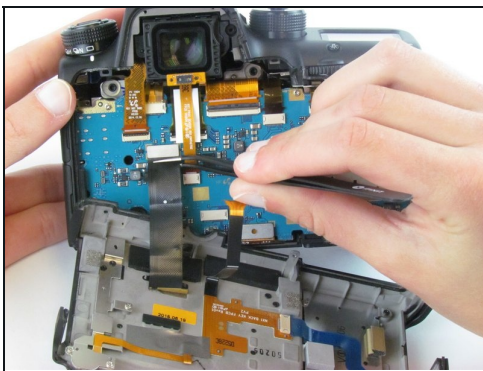
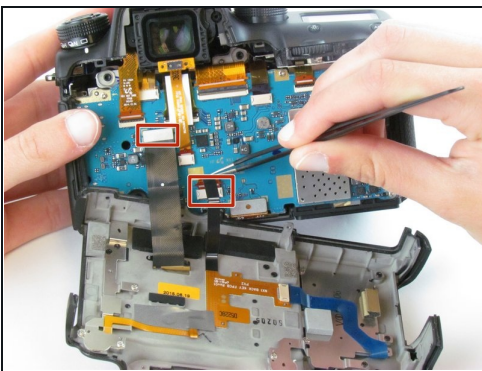
- Use a plastic opening tool to separate the back cover from the front cover.
- ① Pry the back cover in this order: bottom, right side, left side.

Step 8



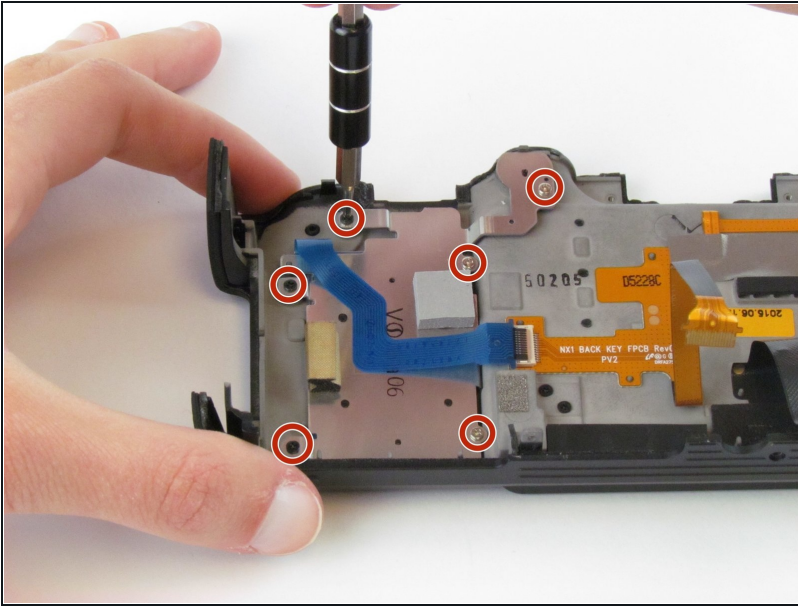
- Use your fingers to pull the back cover away from the front cover.
- ⓘ Do not completely separate the back cover from the front cover as two cables hold these components together.

Step 9



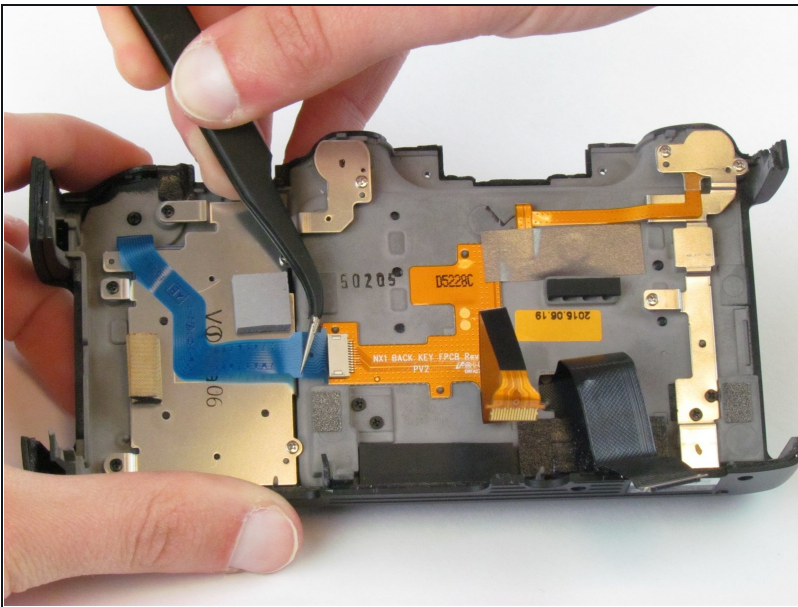
- Use [tweezers](#) to pull the two ribbon cables horizontally out of their clips.

Step 10 — Navigation Buttons



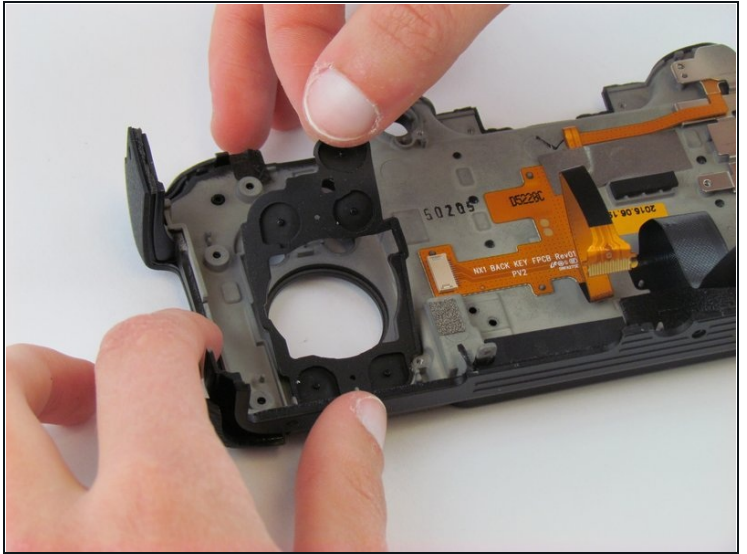
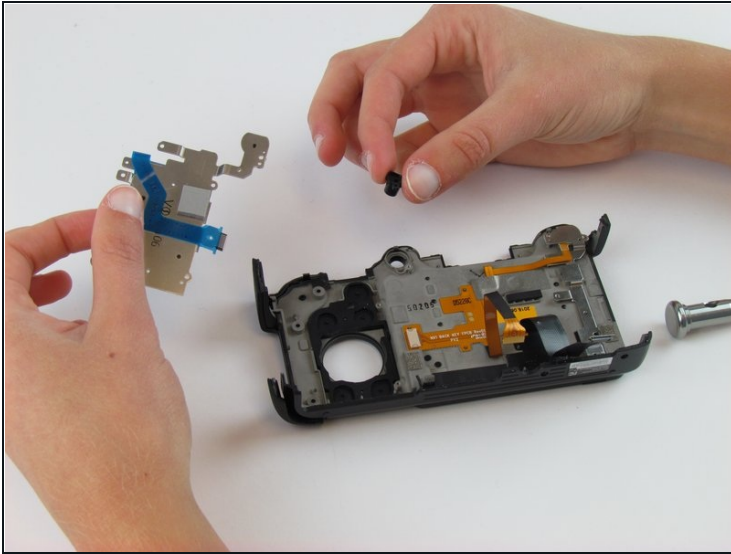
- Use the Phillips #00 screwdriver to remove the six screws (three silver 3.5 mm screws and three black 4.2 mm screws).

Step 11



- Use the [tweezers](#) to pull the blue ribbon cable horizontally out of its clip.

Step 12



- Use your fingers to remove the metal piece with the blue ribbon cable and the rubber buttons lying underneath.

To reassemble your device, follow these instructions in reverse order.