



Hamilton Beach 64650 Motor Replacement

How to replace the motor block in a Hamilton Beach Stand Mixer.

Written By: Gwen Davis



INTRODUCTION

This page will guide you through the replacement of the motor block in your Hamilton Beach Classic Stand Mixer 64650. You may also find this guide useful to access many other parts in your mixer that you may be experiencing problems with. Although this guide will require the use of a soldering iron, there is a link provided to walk through the process step-by-step.



TOOLS:

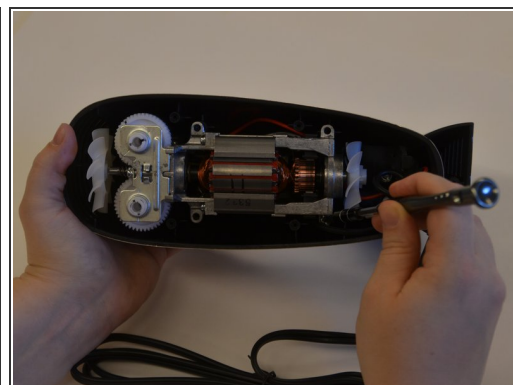
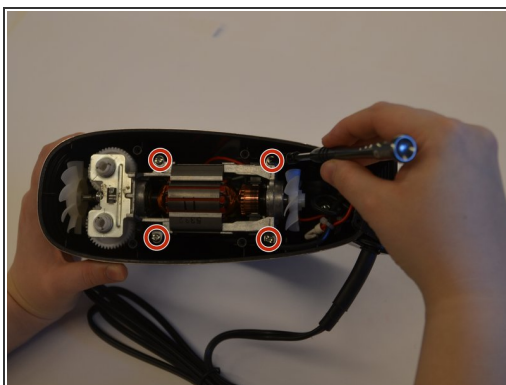
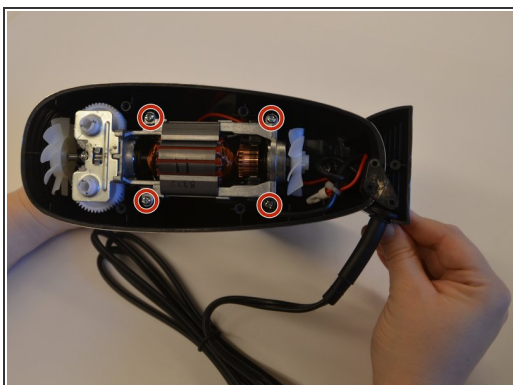
- [Soldering Iron](#) (1)
 - [Solder](#) (1)
 - [Phillips #2 Screwdriver](#) (1)
-

Step 1 — Motor



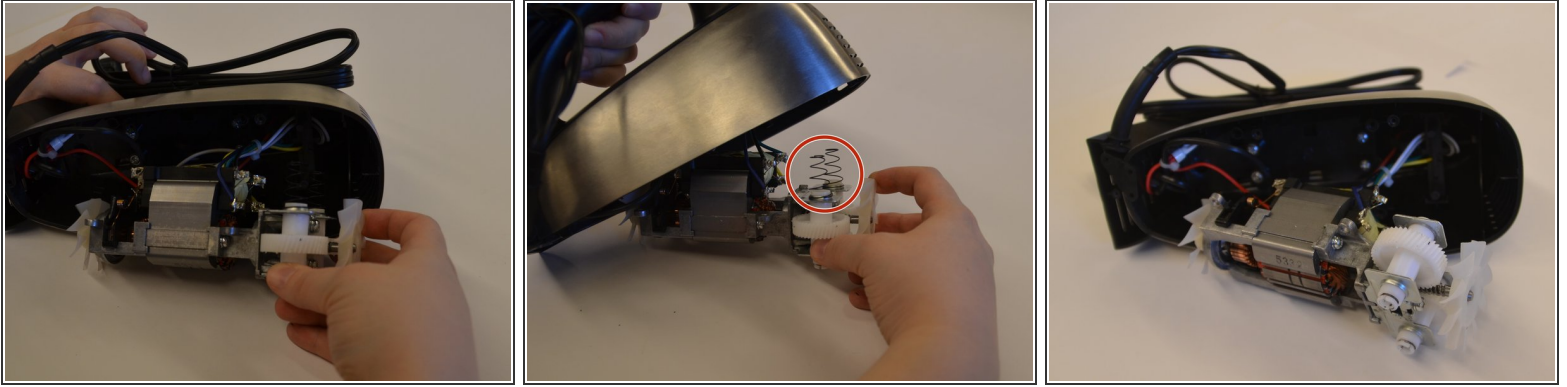
- Flip the handle on its side. Remove five 3.8 mm Philips #2 screws shown and set aside them aside.

Step 2



- Remove the four 8.6 mm Philips #2 screws securing the motor mount and place them aside.

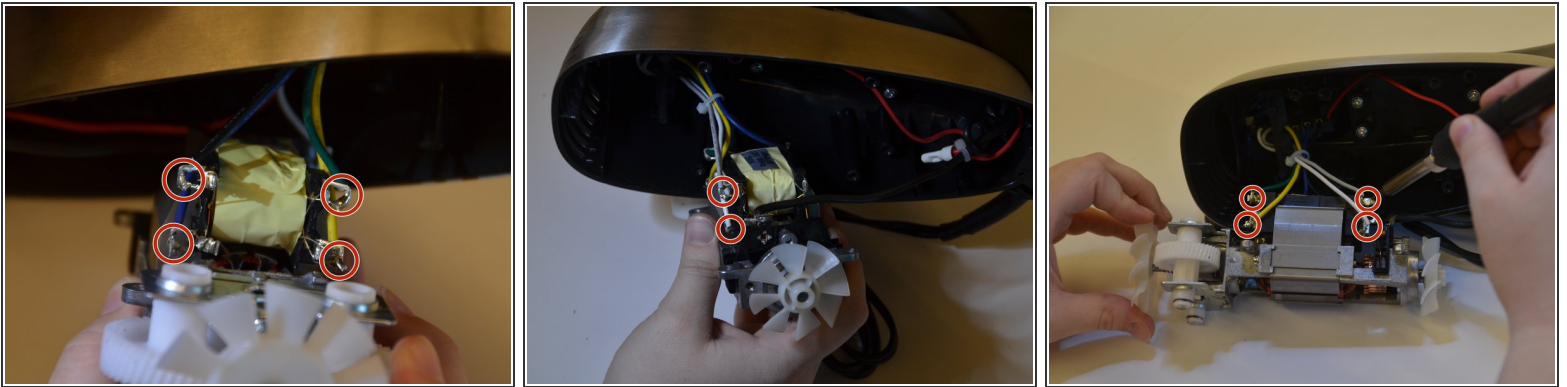
Step 3



- Carefully pull the motor block out of the case.
- Collect the two spring located on top of the white beater gears. The springs are held in place with compression, and may fall into the case when the motor is moved.

⚠ Handle the wires with care to ensure you do not break any of them.

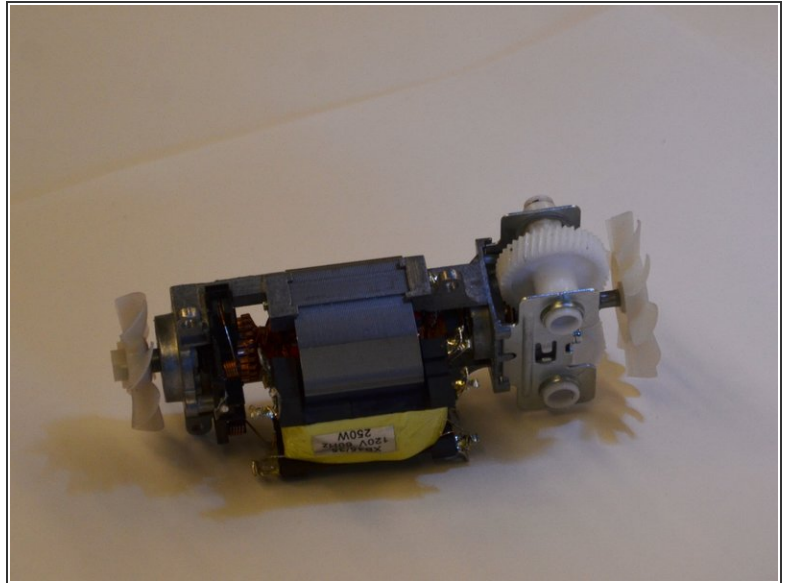
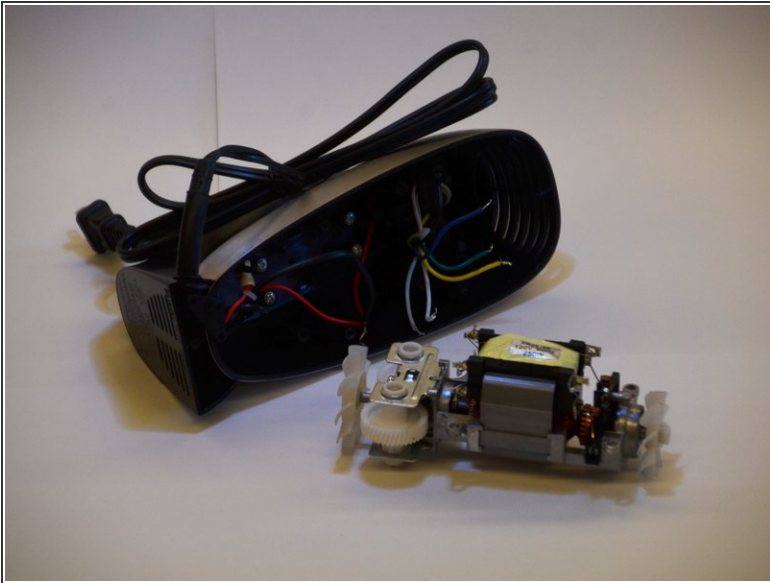
Step 4



- Desolder the six wires connected to the motor using [this guide](#).

⚠ Make sure to note colors when you disconnect them and remember where to reconnect them later.

Step 5



- Once disconnected, the motor will slide out easily.

To reassemble your device, follow these instructions in reverse order.