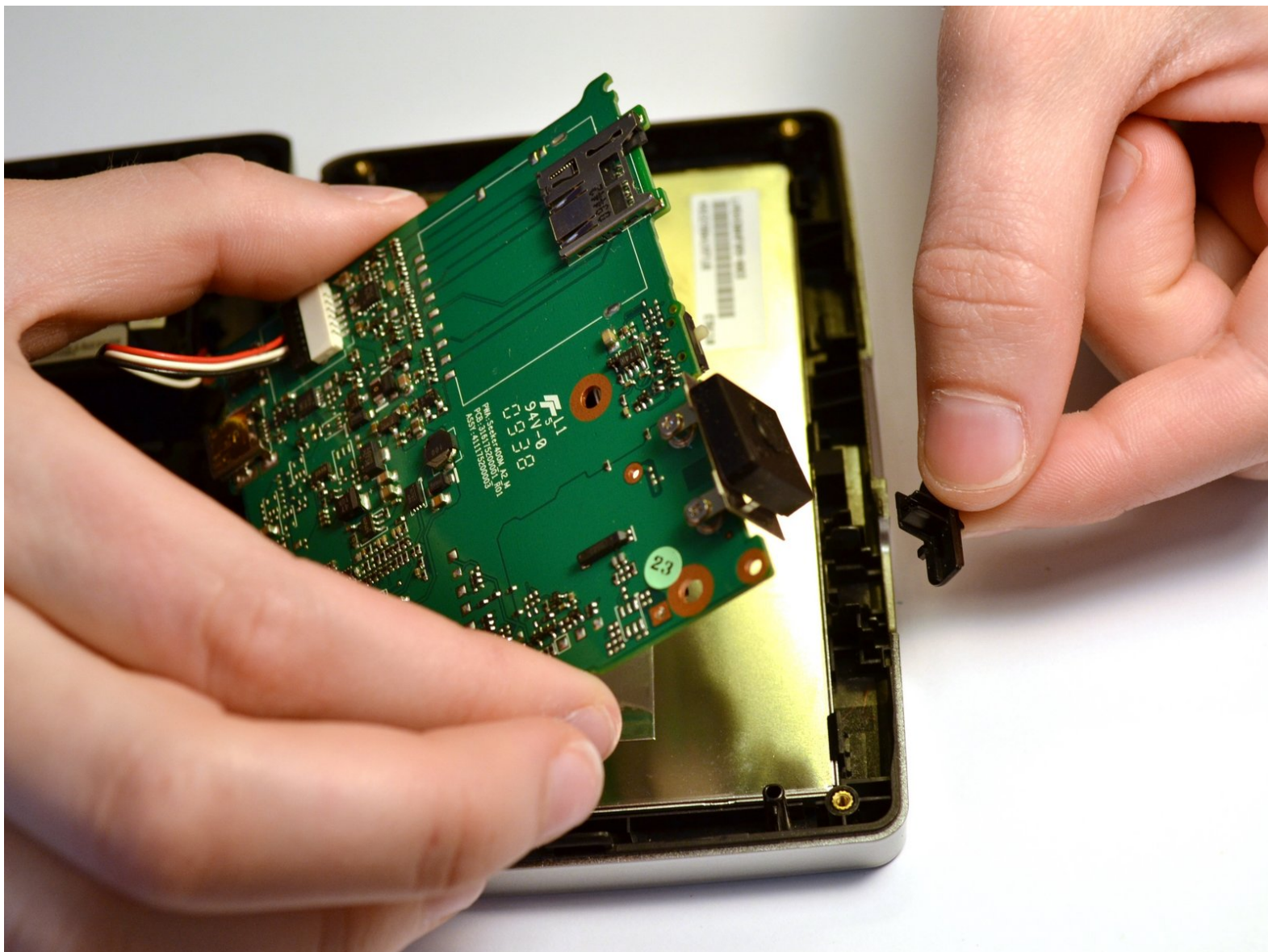




Magellan RoadMate 1440 Power Switch Replacement

Follow this guide to replace the power switch on your device.

Written By: Jeremy Johnson



INTRODUCTION

Follow this guide to replace the power switch on your device.



TOOLS:

- [Phillips #0 Screwdriver](#) (1)
 - [Spudger](#) (1)
-

Step 1 — Magellan RoadMate 1440 Back Cover Disassembly



- Place the GPS with the screen facing down.

Step 2



- Remove the four 4.2 mm screws on the back cover of the device using a Phillips #0 screwdriver.

Step 3



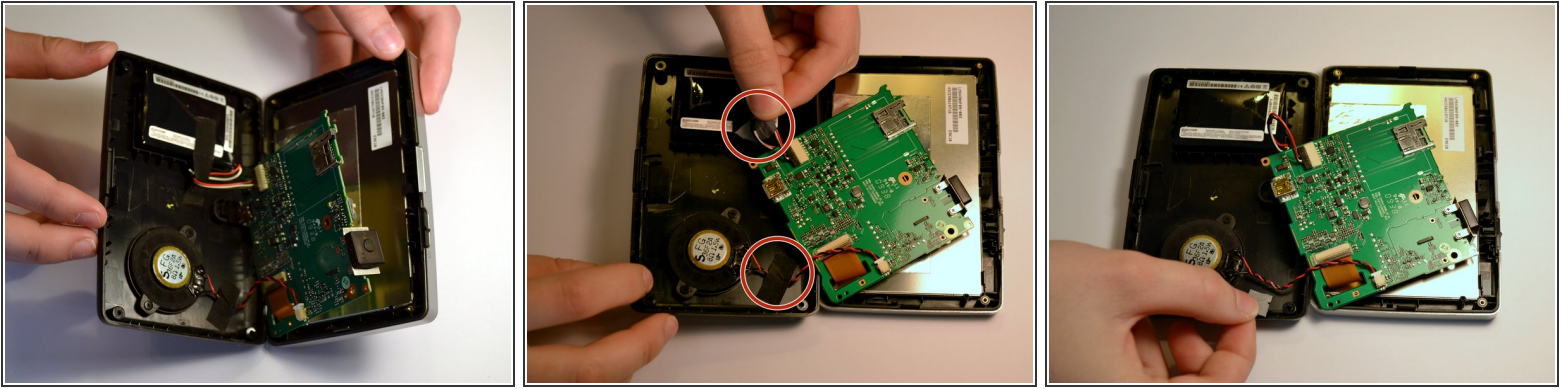
- Remove the two 4.2mm screws at the bottom of the device using a Phillips #0 screwdriver.

Step 4



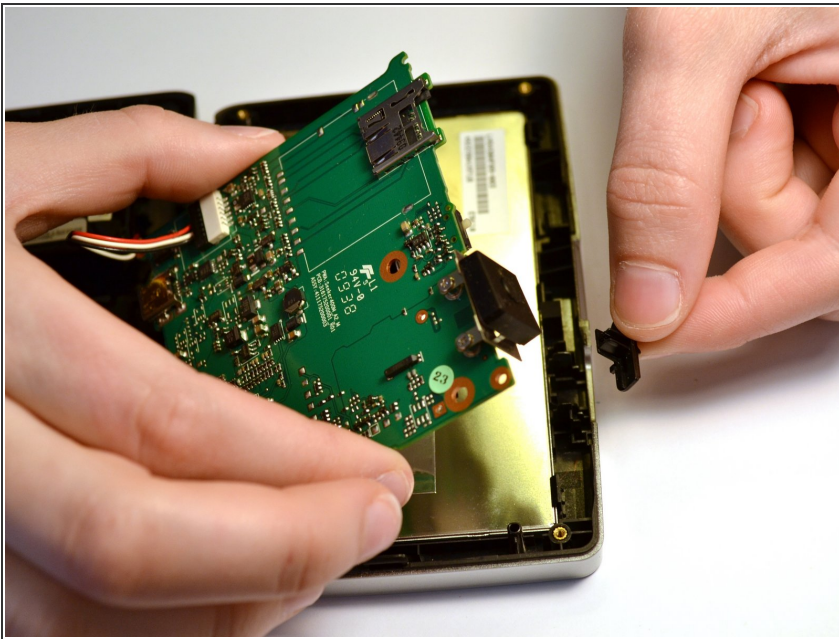
- Insert the black spudger into the crease in the side of the GPS.
- Move the end of the spudger down to break the seal between the two plastic shells.
- Continue doing this along each side of the GPS to ensure a smooth removal.

Step 5



- Fully separate the two sides of the case.
- Remove the tape on the battery wires and the tape on the speaker wires.

Step 6 — Power Switch



- Once the back cover has been removed, lift the power switch from the device.
- ⓘ This is only a sliding switch, the button to power the device on is inside the unit

To reassemble your device, follow these instructions in reverse order.