

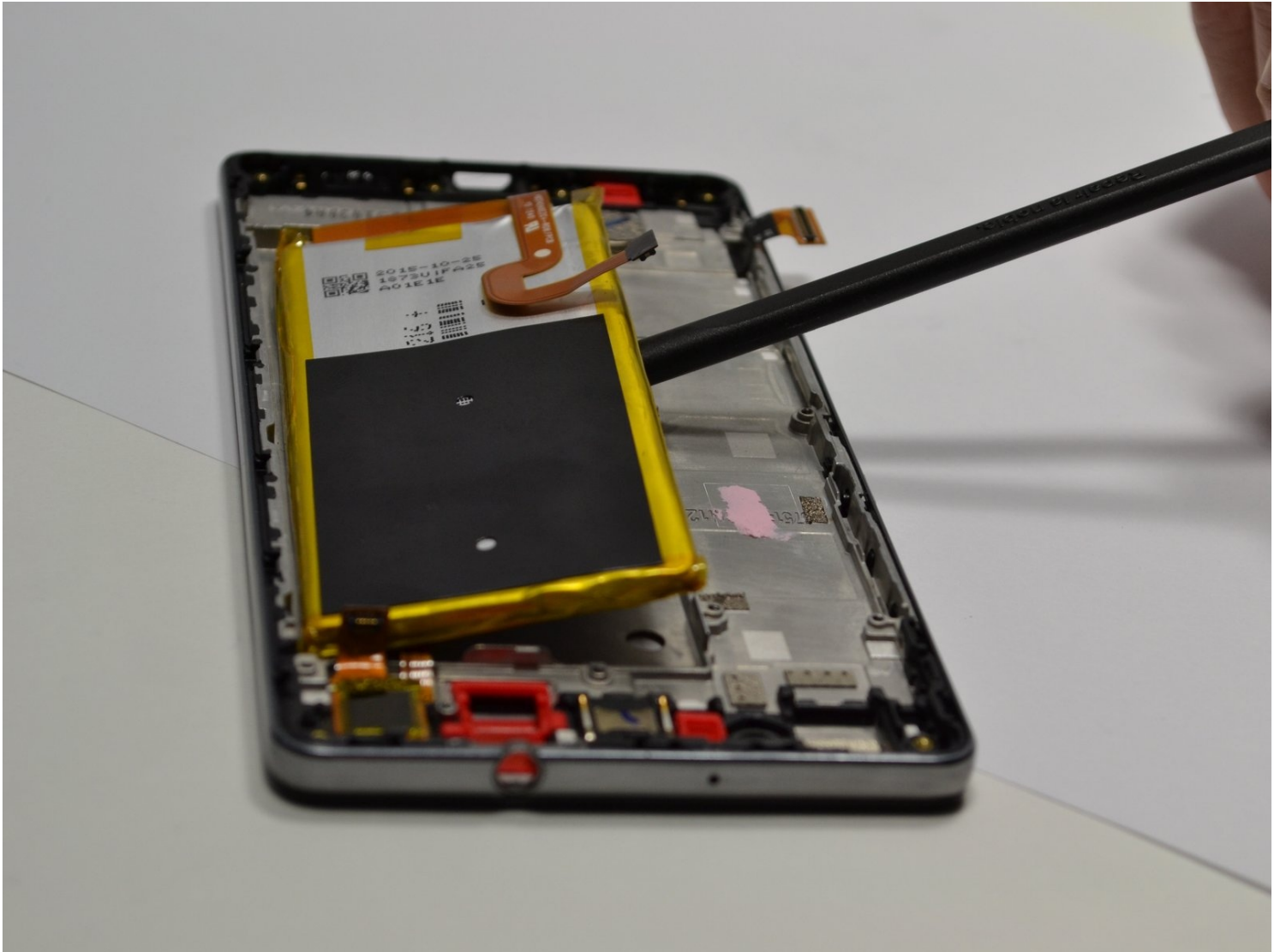


Archived

# Huawei P8 Lite Battery Replacement

This guide has been replaced by an iFixit...

Written By: Brett Anderson



# INTRODUCTION

This guide has been replaced by an [iFixit created guide found here](#).

This guide will instruct step-by-step how to disassemble the P8 Lite and replace the battery. A [breakdown kit](#) and a replacement battery will be required. Review the device [Teardown Guide](#) to get started.

## 🔧 TOOLS:

[Phillips #000 Screwdriver](#) (1)  
[Spudger](#) (1)  
[T5 Torx Screwdriver](#) (1)  
[Tweezers](#) (1)  
[SIM Card Eject Tool](#) (1)  
[64 Bit Driver Kit](#) (1)

## ⚙️ PARTS:

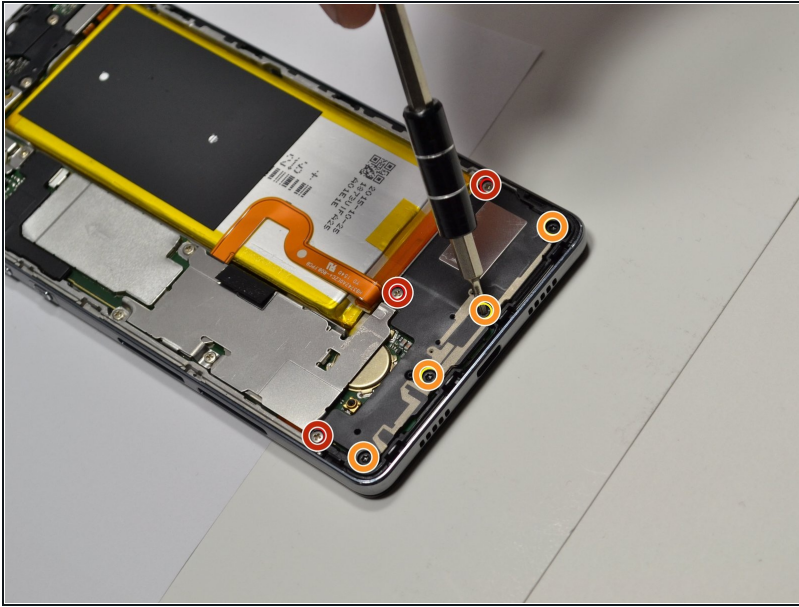
[Huawei P8 Lite Replacemet Battery](#) (1)

## Step 1 — Remove Back Cover and Loudspeaker



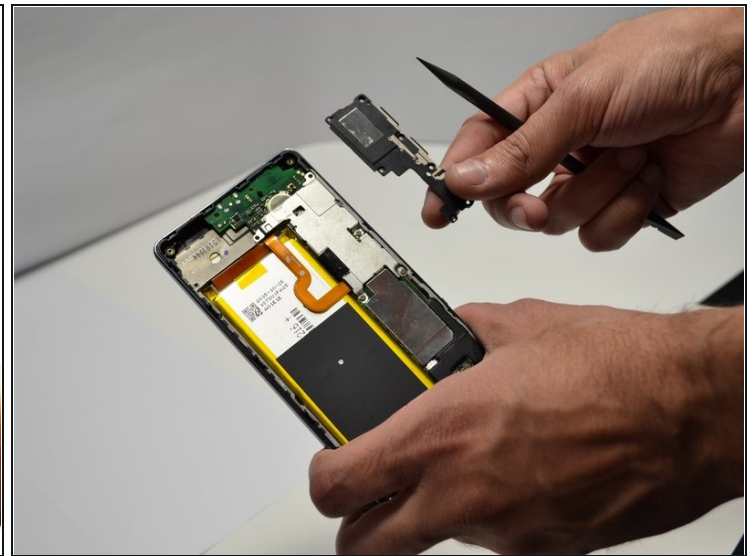
- Use the [Spudger tool](#) to get access to the loudspeaker. **Locate** where the headphone jack is, then move about one-inch to the right and begin to **gently pry** the back-cover off the phone with the flat end of the Spudger tool. Make sure to **pry apart the entire perimeter** of the back-cover to prevent bending/cracking of the plastic.
- Tools used: [Spudger tool](#) (used as a wedge to pry off the back-cover and loudspeaker.)

## Step 2



- Remove three silver Phillips 000 screws.
- Remove four T5 Torx screws.

## Step 3



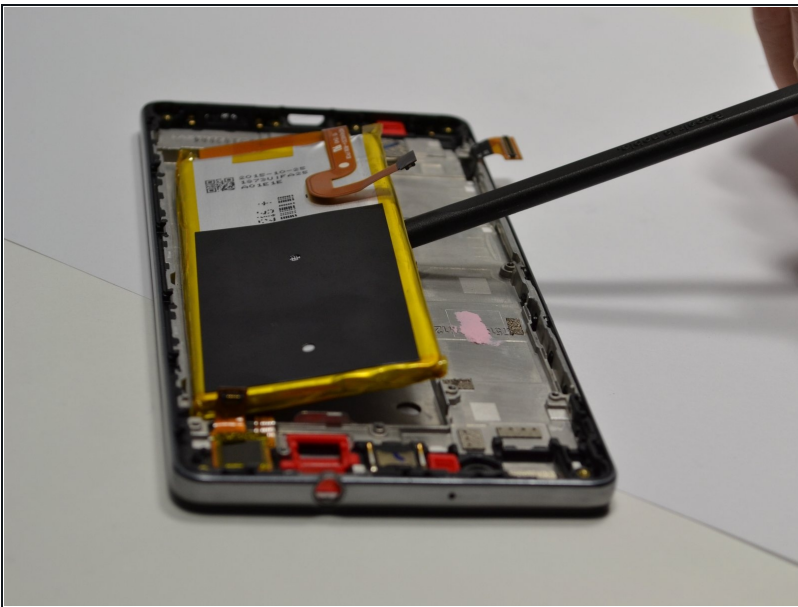
- **Gently**, use the flat end of the [Spudger tool](#), or a metal opening tool to **lift** and **remove** the loudspeaker from the phone. The loudspeaker is the entire portion of the phone where the screws were extracted.

## Step 4 — Replace Battery



- **Locate** adhesive strip underneath the battery and **grip** with your thumb and forefinger. **Slowly pull** on the adhesive strip until it's off to **release** adhesive securing battery.

## Step 5



- **Insert** the [Spudger tool](#) underneath the battery **multiple times** to separate the adhesive securing the battery. **Be careful** not to bend the battery and lift it from the phone frame.
- ☑ [Replace the adhesive](#) and **insert** the replacement battery into the slot.

To reassemble your device, follow these steps in reverse order.