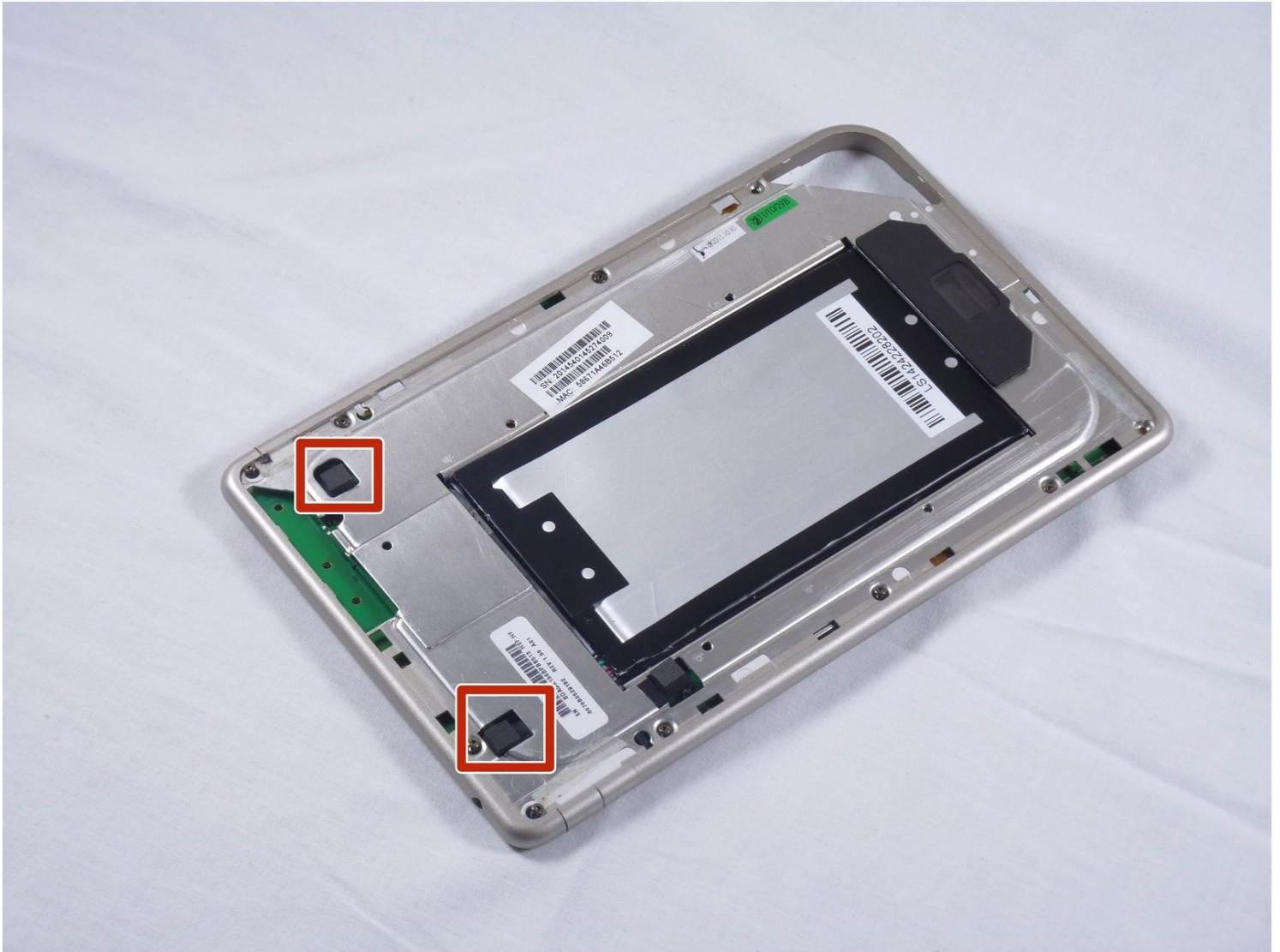




Nook Tablet Midframe Replacement

Use this guide to replace the midframe of your...

Written By: Holly Lowe



INTRODUCTION

Use this guide to replace the midframe of your Nook Tablet. This guide is also a prerequisite for accessing or replacing most of the Nook's internal components.

TOOLS:

[Spudger](#) (1)

[T5 Torx Screwdriver](#) (1)

Step 1 — Back Cover



- Flip the Nook over.

Step 2



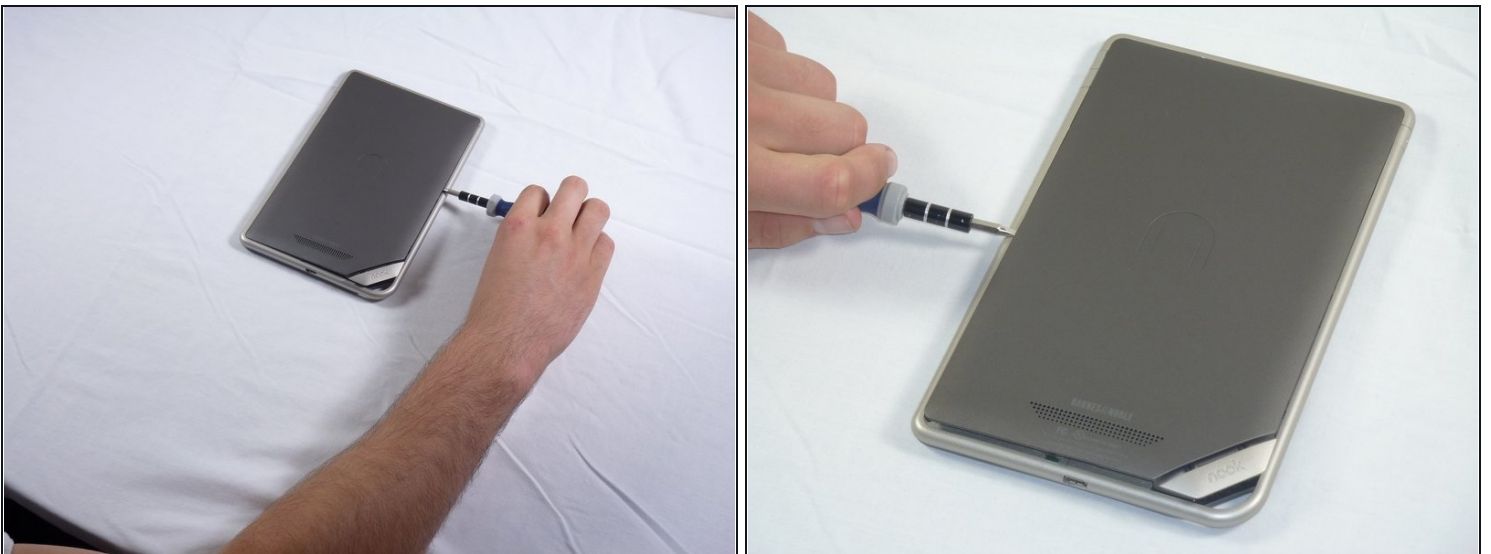
- Lift the flap that reads "Nook" to reveal the tape that is underneath. Remove the memory card if one is present.
- Remove the tape covering the round holes to reveal two T5 Torx screws.
- Remove the two T5 Torx screws securing the back cover.

Step 3



- Insert the flat end of a spudger between the front panel and the rear assembly.
 - ① Though these photos show a screwdriver, use a spudger or plastic opening tool in order to prevent damage to the device.
- Use a spudger to lift the the back panel from the rest of the Nook.

Step 4



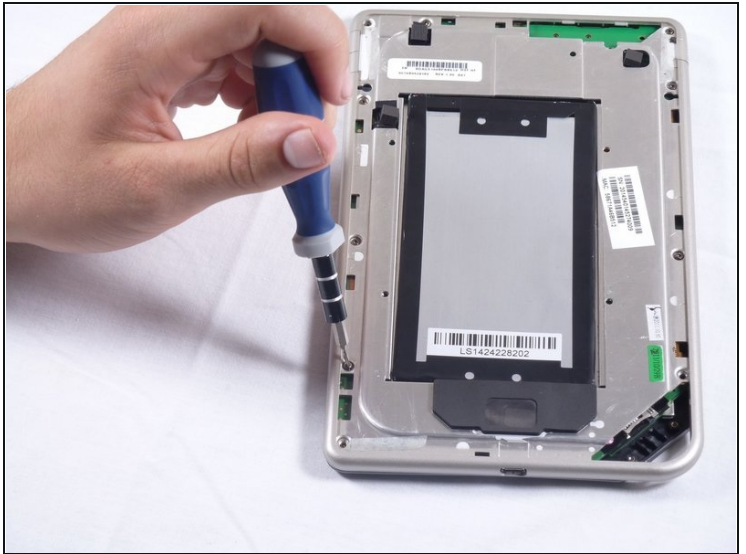
- Slide the spudger around the edges of the Nook to loosen the back panel.

Step 5



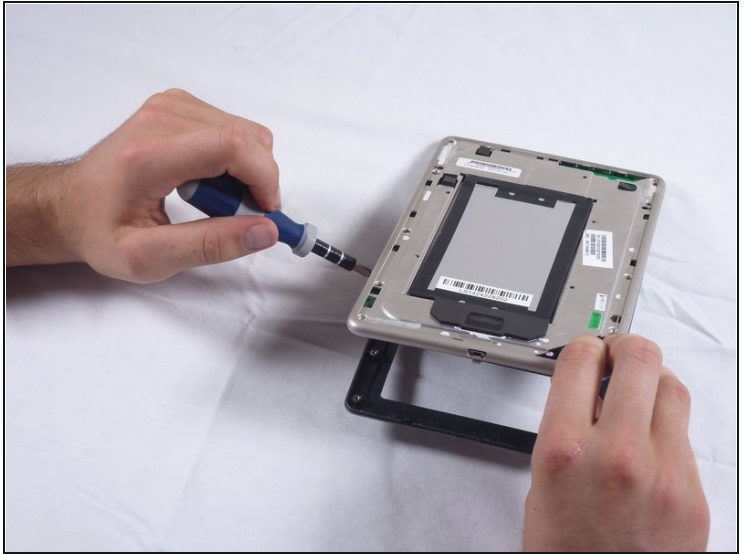
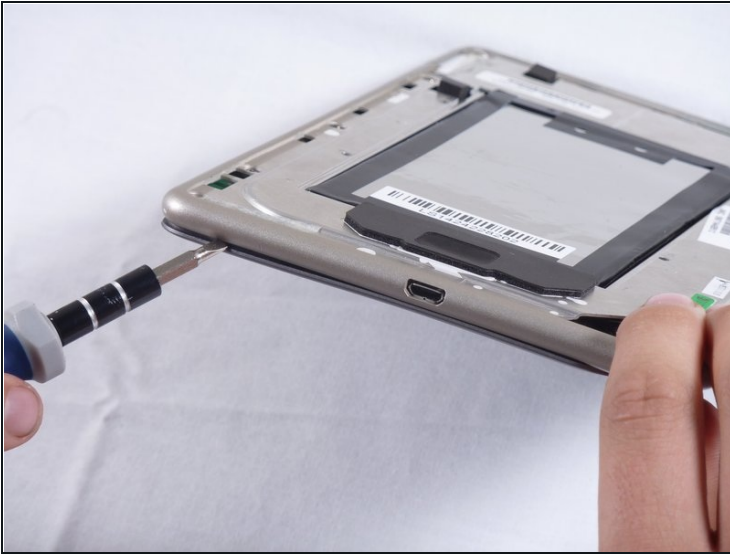
- Pull the back panel off the Nook.

Step 6 — Screen Bezel



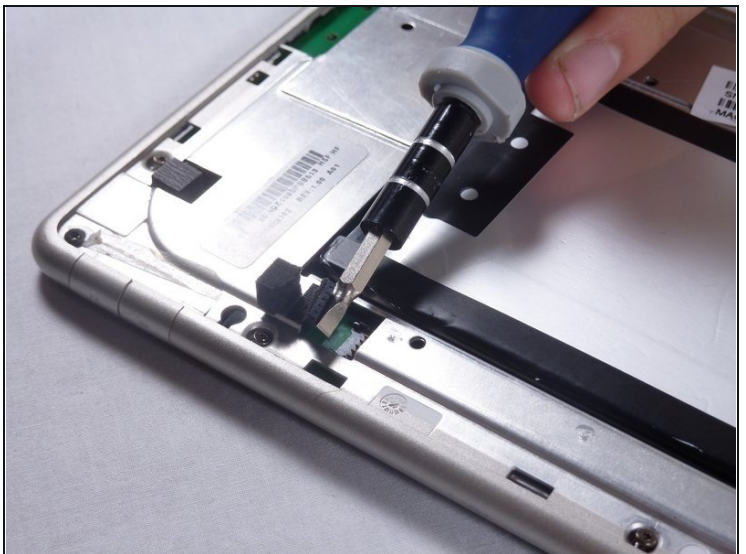
- Using the T5 Torx screwdriver, remove the ten T5 screws from around the edges of the silver midframe.

Step 7



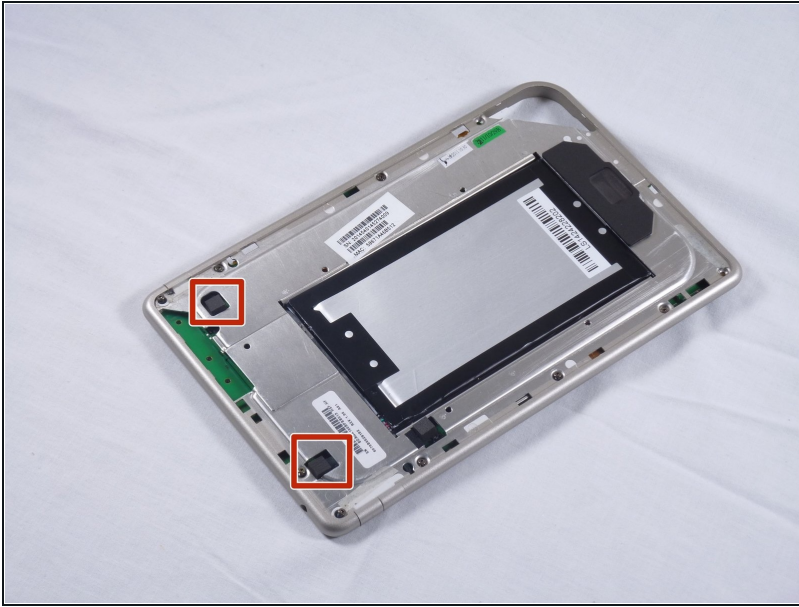
- Using a spudger or plastic opening tool, carefully pry the screen bezel away from the silver midframe.

Step 8 — Disconnect the Battery



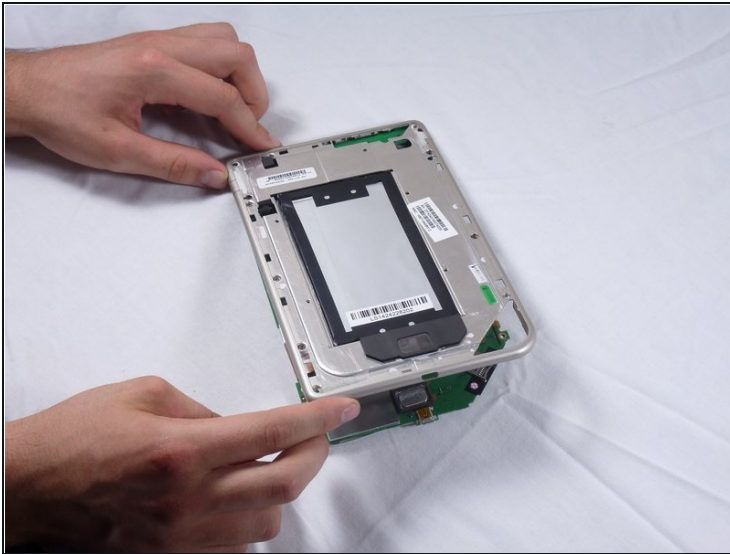
- Lift up the foam pad at the corner of the battery to reveal the battery connector.
 - Use a spudger or plastic opening tool to disconnect the battery cable from the motherboard.
- ⚠ These photos show a screwdriver, but we recommend using a nonconductive tool like a spudger to prevent a potential short.

Step 9 — Midframe



- Lift up the foam that covers the power connector and volume connector.
- Disconnect the power and volume cables from their sockets on the motherboard.

Step 10



- Carefully lift the silver midframe away from the motherboard and display assembly.

⚠ Be careful when handling the motherboard, making sure to not dislodge/shift any of its major components.

To reassemble your device, follow these instructions in reverse order.

