



Gateway Lt4004u Wireless Card Replacement

In this guide, you will learn how to find the...

Written By: Carlisle Hiott



INTRODUCTION

In this guide, you will learn how to find the wireless card within the Gateway LT4004u laptop and remove it. Once the back panel has been separated, the wireless card can immediately be seen.

TOOLS:

Phillips #0 Screwdriver (1)

Tweezers (1)

Plastic Cards (1)

Step 1 — Battery



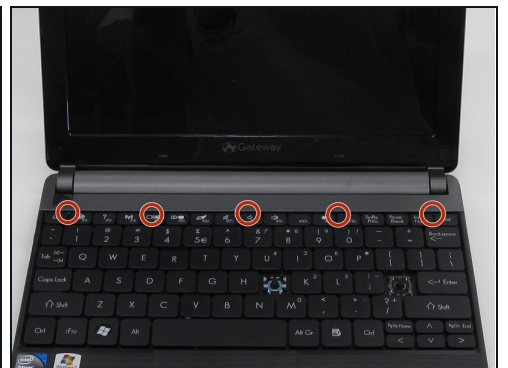
- Place the laptop face down in front of you.
- Locate the battery lock switches on the left and right top corners of the bottom of the device indicated by the red circles.
- Pinch the switches and slide toward the edges of the computer to unlock.

Step 2



- Once the switches have both been unlocked, push the battery upwards away from the rest of the laptop.
- Remove the battery from the laptop.

Step 3 — Keyboard



- Open the laptop so that the screen and keyboard are facing you.
- Identify the 5 tabs above the function keys in the crevice that attaches the keyboard to the main frame.

Step 4



- Use an opening pick to push each tab away from you.
- Use an opening tool to push the middle tab until you hear a click. Begin to push the tool downward into the computer and slide the card along the length of the keyboard, as you overcome the five tabs.

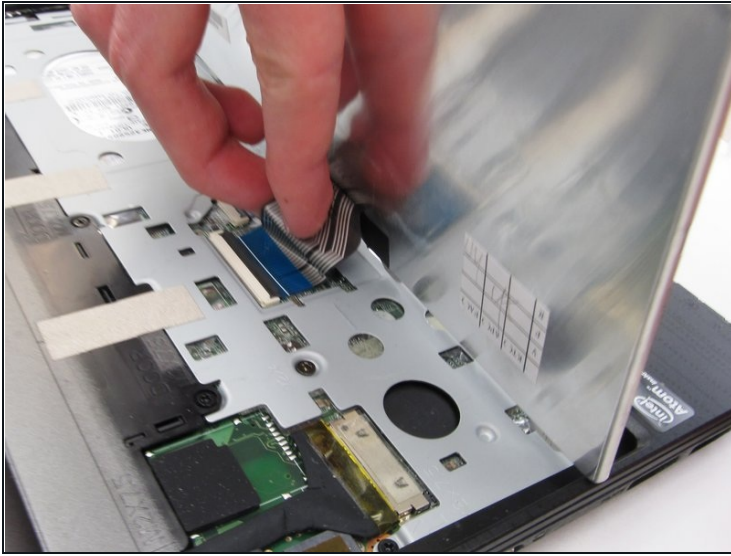
⚠ A clicking sound is normal and no cause for alarm.

Step 5



- Begin to slide the [plastic card](#) under the top edge of the keyboard. You will hear popping sounds and the keyboard will eventually be released.
 - Carefully pry the keyboard from the main frame, starting at the top section.
- ① Look at the intel sticker in this step and the next to orient your computer with the pictures.

Step 6



- ① Look at the intel sticker in this step and the previous step to orient your computer with the pictures.
- Unplug the thin blue connection piece beneath the keyboard. It may pop off on its own while you are prying off the keyboard.
 - ⚠ The popping noise will not hurt the computer.
- Once the thin blue plastic has been detached, remove the keyboard from the rest of the laptop.

Step 7 — Back Panel



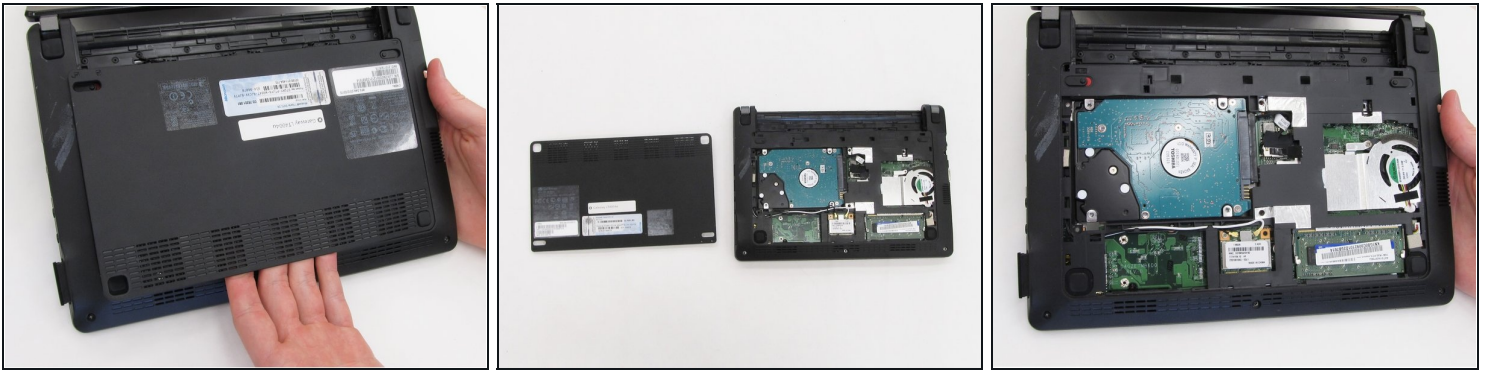
- Locate and unscrew the five screws indicated by the red circles in the picture using a Phillip's #0 screwdriver. All of the screws are 8.0 mm, excluding the top right screw which is shorter. It should be 5.0mm.
- Each screw should have the word "DOOR" engraved beside or above it.

Step 8



- Hold the computer in your hands and use the tip of your screwdriver or a spudger to push through the bottom right hand hole left by the removed screw. This hole is shown in the picture within a red box.
 - The tip of the screwdriver will push against the bottom casing of the laptop and pop it away from the rest of the frame.
- ⚠ There will be a loud cracking noise as the bottom of the computer detaches. You are not breaking it!

Step 9



- Close the laptop and place it in front of you face-down with the hinge connecting the screen and keyboard away from you on the table. Pry the rest of the bottom casing away from the computer, exposing the inside.
- ① Note that the laptop in this picture has both been placed upside down and rotated 180 degrees from the previous picture.

Step 10 — Wireless Card



- Locate the wireless card (indicated by the red square) and the two wires attached to it.
- Use your fingers and slightly pull on the wires until they disconnect from the wireless card.
- Locate the one silver screw on the wireless card and unscrew it using a Phillips #0 screwdriver. It is 3.0mm long.

Step 11



- After the screw has been removed, you should be able to insert your fingernail or prying device under the bottom side of the wireless card.
- Pull upwards and remove the wireless card.

To reassemble your device, follow these instructions in reverse order.