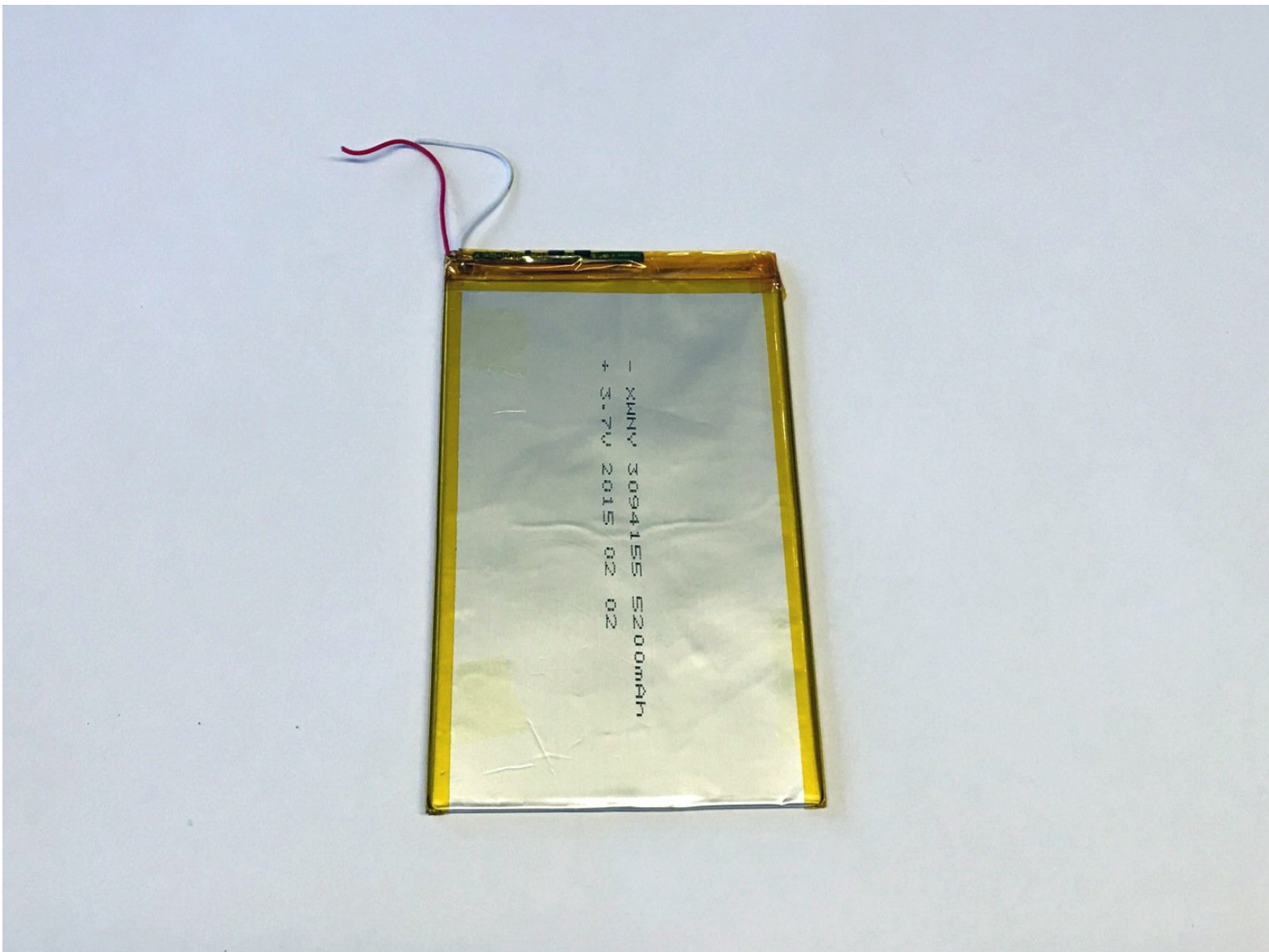




Dragon Touch M10X Battery Replacement

This guide will allow you to first troubleshoot your battery. If the troubleshooting does not work, it will then guide you through the steps to actually replace the battery in the tablet

Written By: Joseph Rockcliffe



INTRODUCTION

We are going to teach an individual to change the battery on their tablet should they have an issue with the device's battery.



TOOLS:

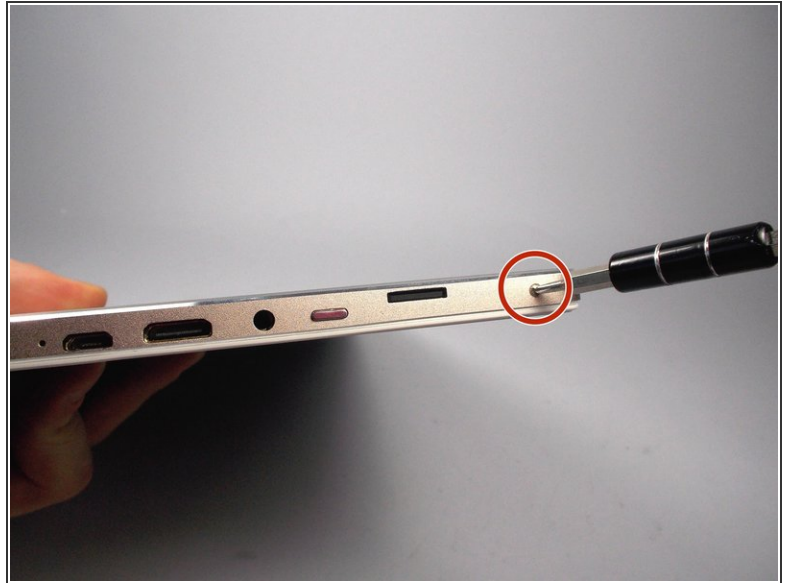
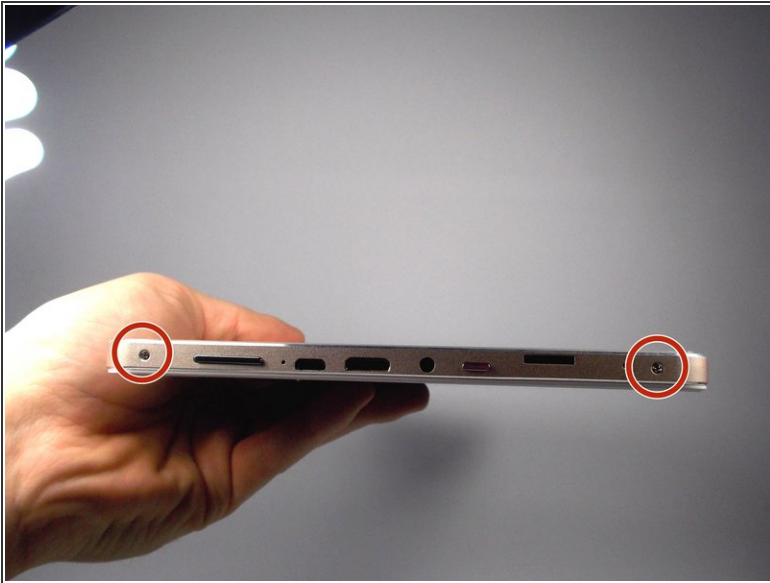
- [Phillips #0 Screwdriver](#) (1)
- [iFixit Opening Tools](#) (1)
- [Soldering Iron](#) (1)



PARTS:

- [5200 mAh Replacement Battery](#) (1)

Step 1 — Battery



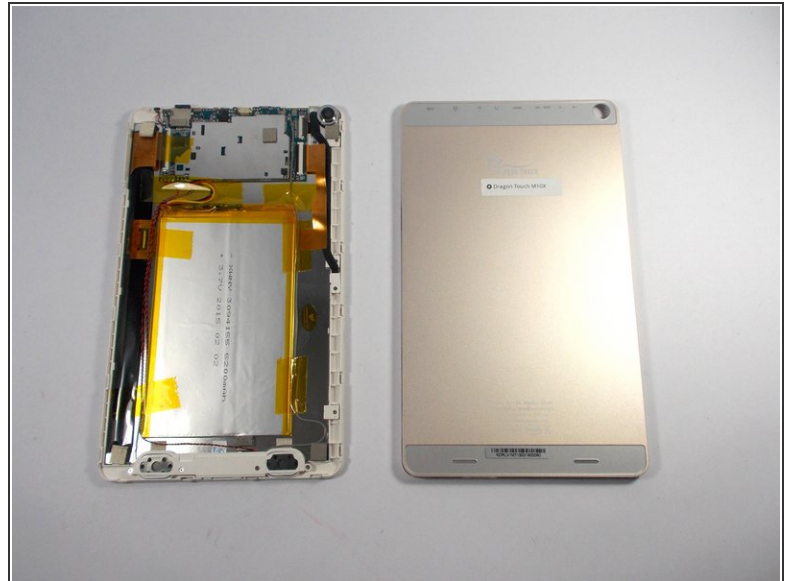
- Remove the two screws from the top of the tablet as shown in the figure using a J0 philips head bit.

Step 2



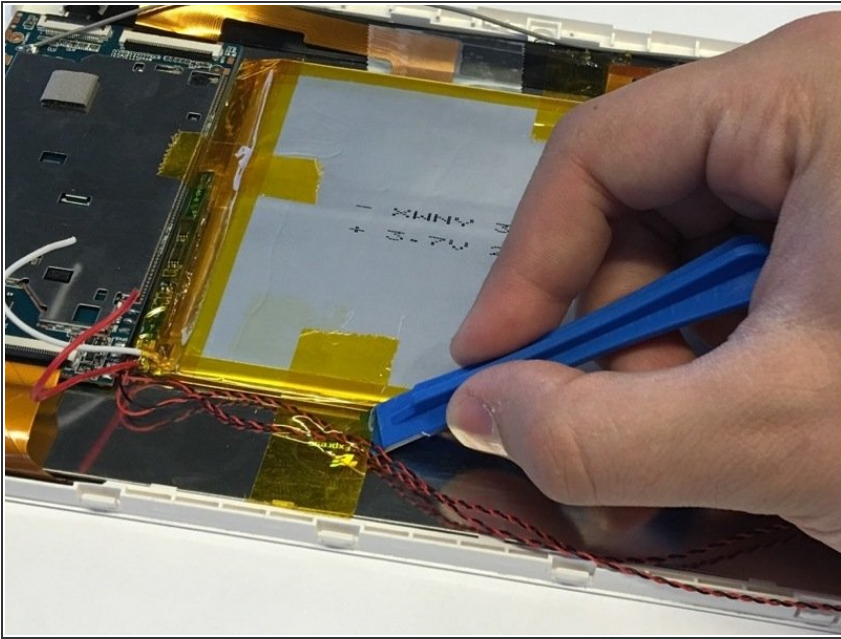
- Use the large plastic opening tool to separate the back cover from the device. Wedge the sharp end of the tool into the crack and use leverage to further separate the back cover from the device.
- Still holding pressure on the opening tool, slowly and carefully slide the tool along the gap to separate it further. You should hear slight snapping as it comes apart. Work your way around all sides until the cover is able to be removed.

Step 3



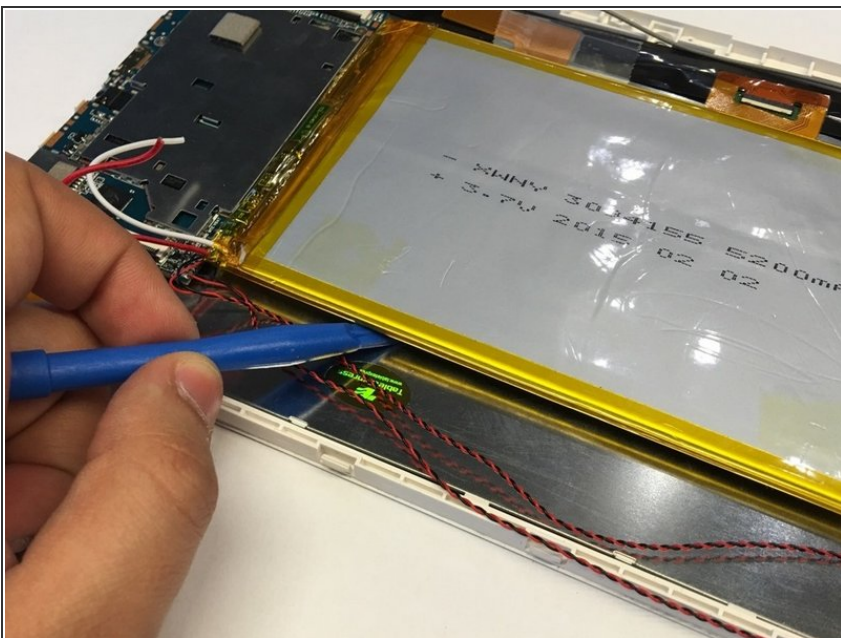
- Using your hands and the separating tool, remove the back cover from the device.

Step 4



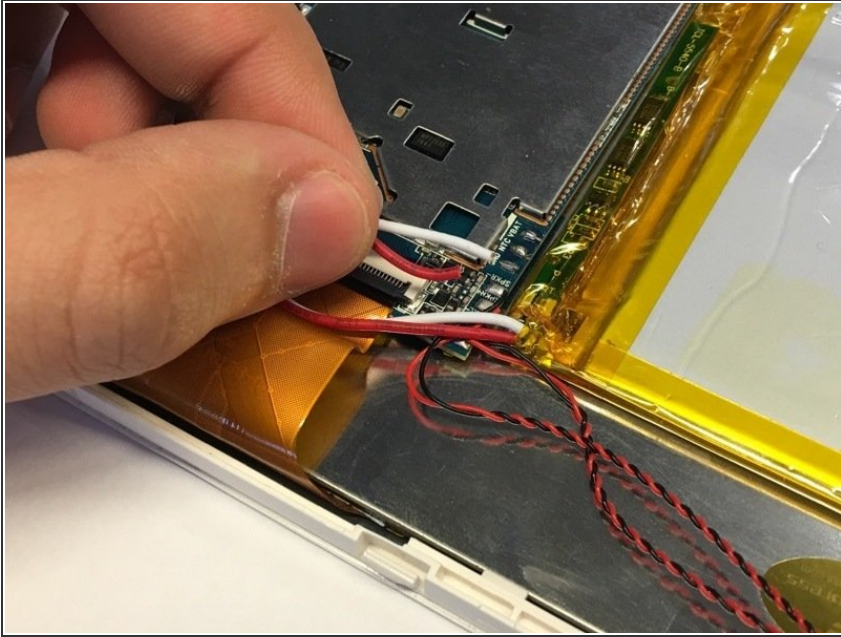
- Using a plastic opening tool, carefully peel off the yellow tape holding the battery in place.
- ❗ Unless you have more of this tape, you're going to need to save it and put it back on after you have successfully replaced the battery.

Step 5



- This is the most difficult part. The battery is held onto the surface with a strong epoxy. The battery can be bent easily so extreme care must be taken in removing it from the surface. A plastic opening tool must be used to loosen the battery from the surface.
- Once it is loose, it may be fully separated by using either your hands or the plastic opening tool.

Step 6



- The red and white wires connecting the battery to the motherboard must be desoldered. Refer to the [Soldering Technique Guide](#) for instructions on how to do this. (Be sure to desolder the wires from the battery AND the motherboard.)

To reassemble your device, follow these instructions in reverse order.