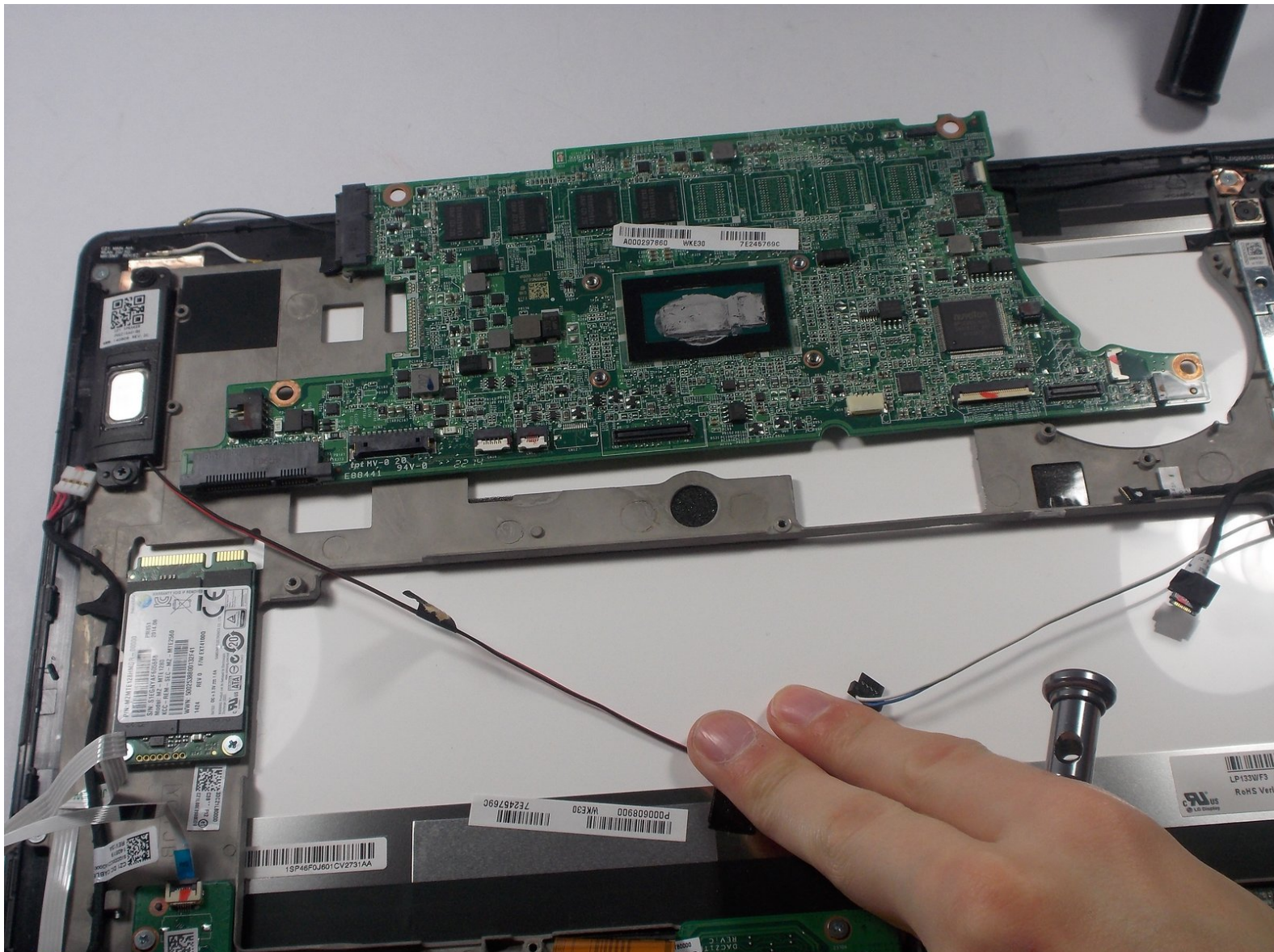




# Toshiba Satellite Click 2 Pro Motherboard Replacement

In this guide you will learn how to properly remove the Motherboard.

Written By: Paul DeOrsey



# INTRODUCTION

To attempt this guide, make sure to have all required materials and tools. This guide is the longest and most difficult of all the guides. Requires your full attention in to properly replace it.



## TOOLS:

- [iFixit Opening Tools](#) (1)
  - [Tweezers](#) (1)
  - [Phillips #0 Screwdriver](#) (1)
-

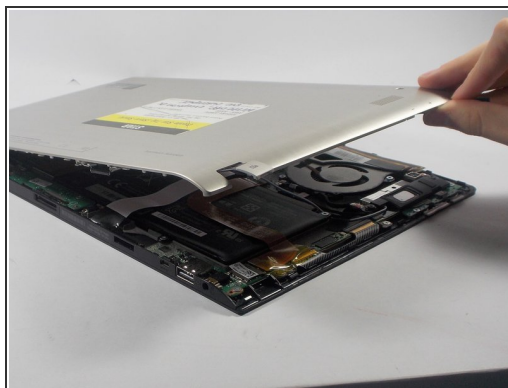
## Step 1 — Battery



**!** Working on your device while it is turned on may result in electric shock. Make sure to shut down and unplug your device before you begin.

- Push down on the tablet sides until you feel a click, then pull up.
- i** This will separate the tablet from the detachable base, make sure to hold down the keyboard for easier detachment.

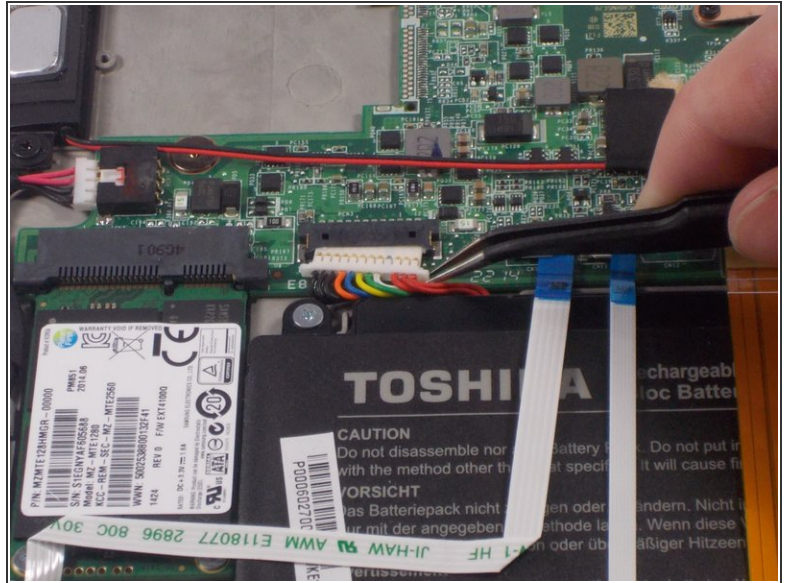
## Step 2



- Remove the base of the tablet from the screen using a plastic opening tool.
- i** Make sure to separate the base evenly on both sides when removing it from the screen.

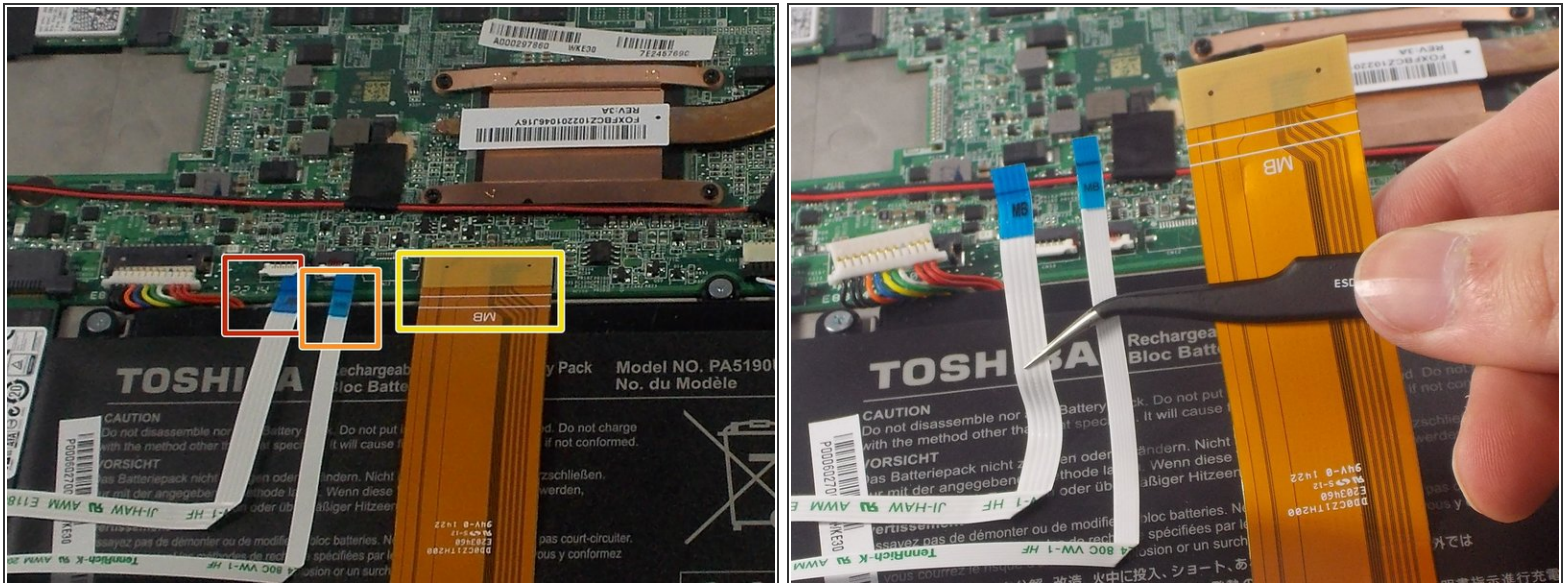


## Step 3



- Remove the battery power connector using ESD safe tweezers.

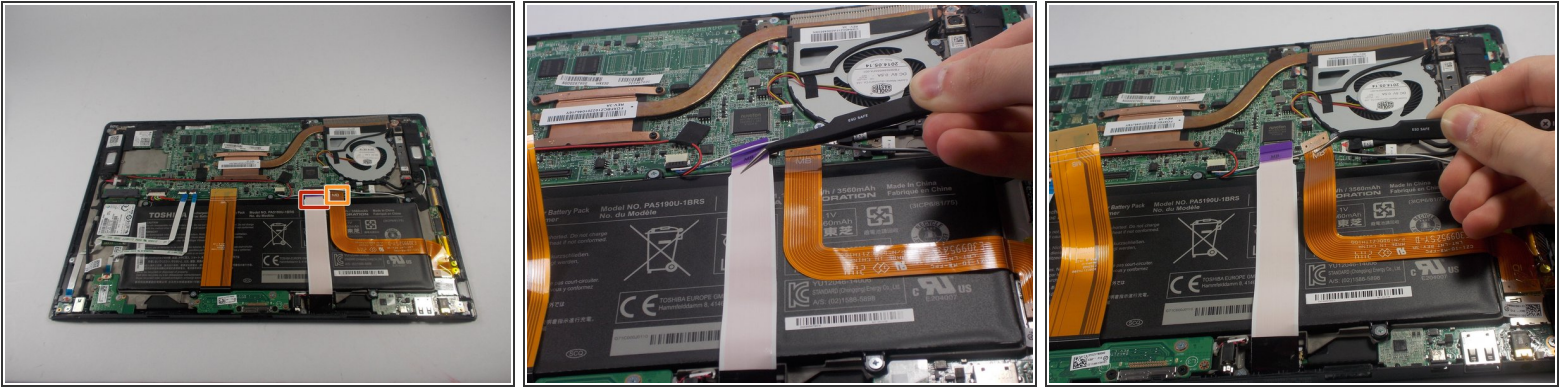
## Step 4



- Remove the LED ribbon cable using ESD safe tweezers.
- Remove the SIM card ribbon cable using ESD safe tweezers.
- Remove the Docking connector ribbon cable using plastic opening tool.
- ⓘ The ribbons may be stuck to the battery so make sure to peel off gently to prevent damage.
- ⚠ Make sure to flip up the white connector attached to the LED and Sim Card ribbons before removing them .

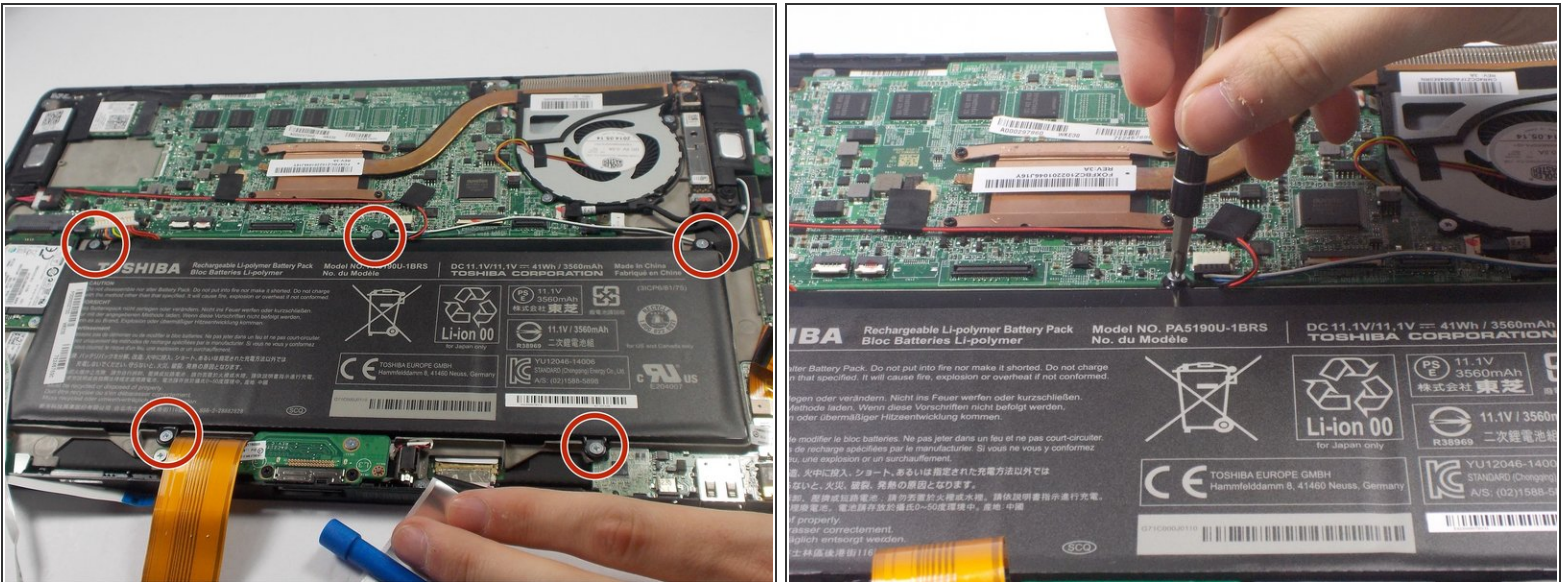


## Step 5



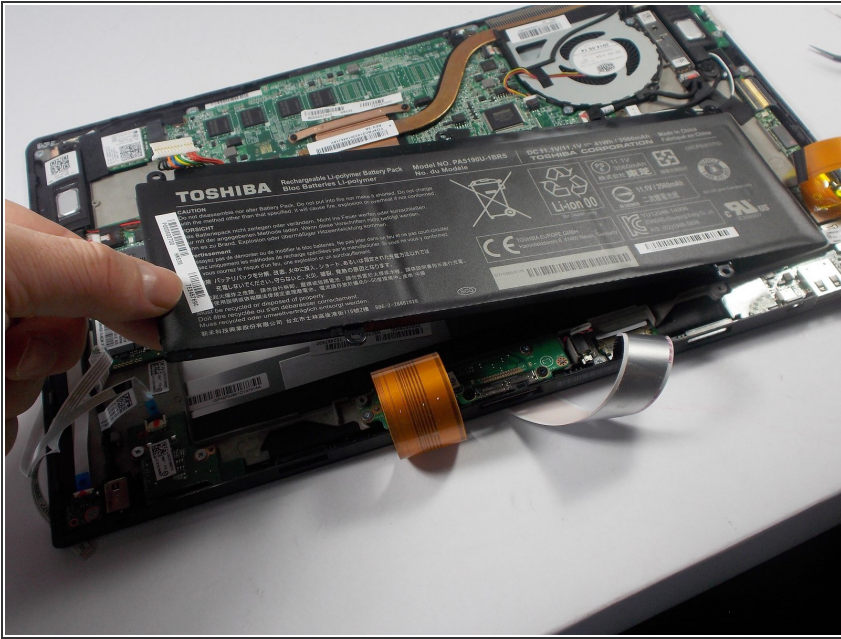
- Remove the LCD Display ribbon cable using a plastic opening tool.
- Remove the I/O ribbon cable using a plastic opening tool.
- ⓘ The ribbons may be stuck to the battery so make sure to peel them off gently to prevent damage.

## Step 6



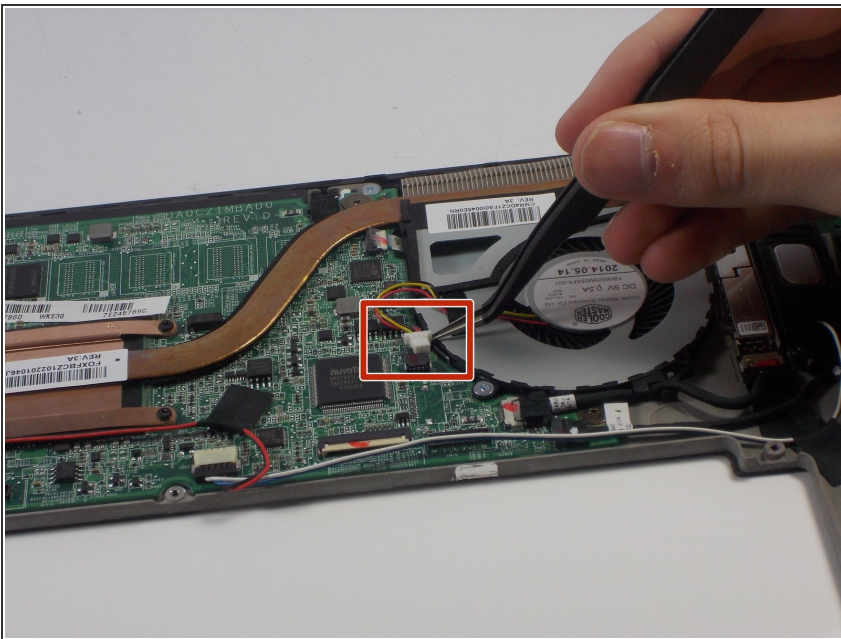
- Remove five 3.5mm Phillips J0 screws using a Phillips screw driver.

## Step 7



- Remove the battery from its holding position.

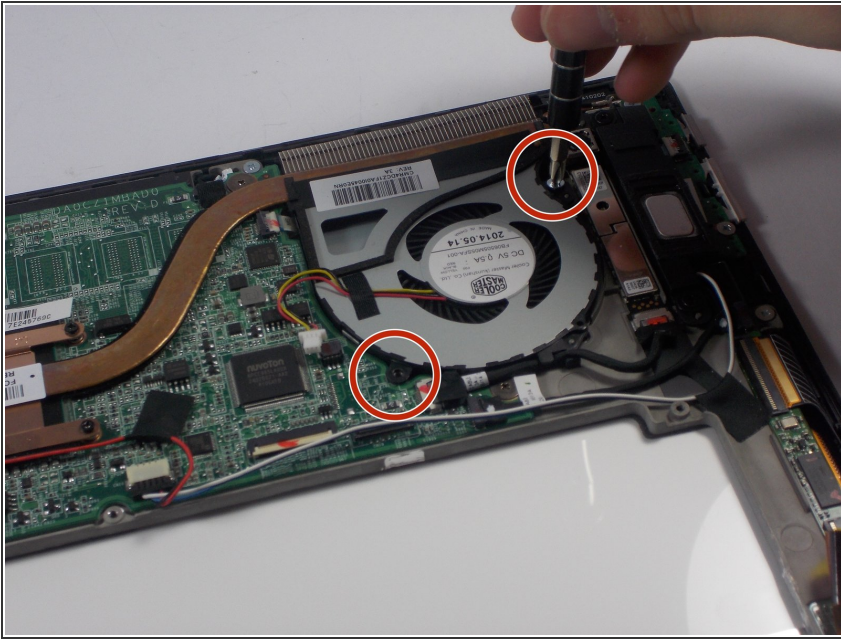
## Step 8 — Heat Sync Fan



- Remove the power connector from the fan using a pair of tweezers.

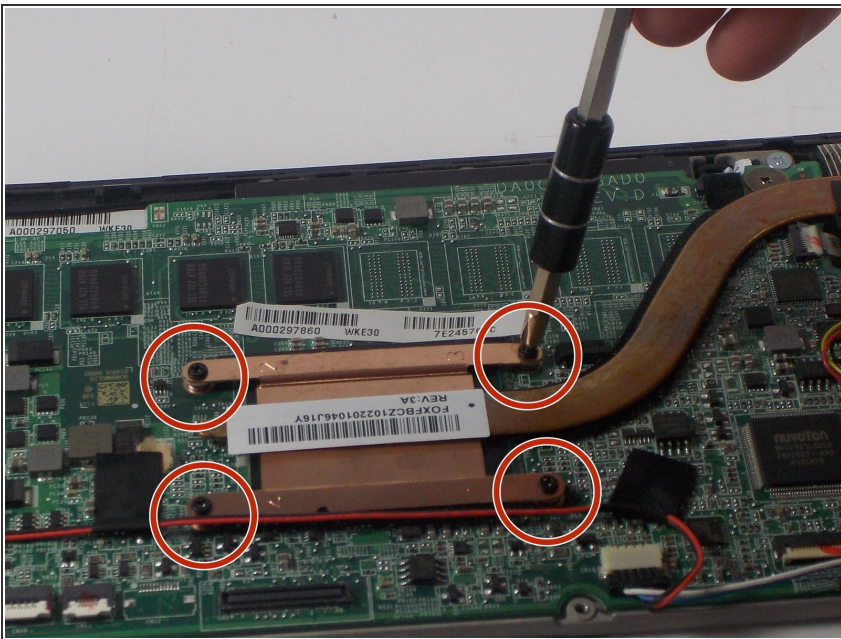


## Step 9



- Remove two 3.0mm Phillips J0 screws using a Phillips screw driver.

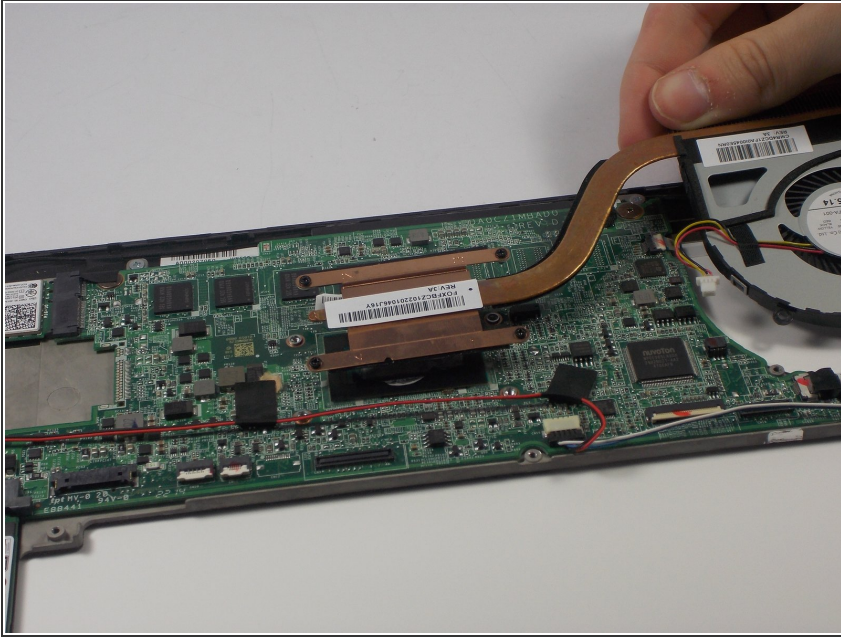
## Step 10



- Remove four 3.5mm Phillips J0 screws from the heat sink.

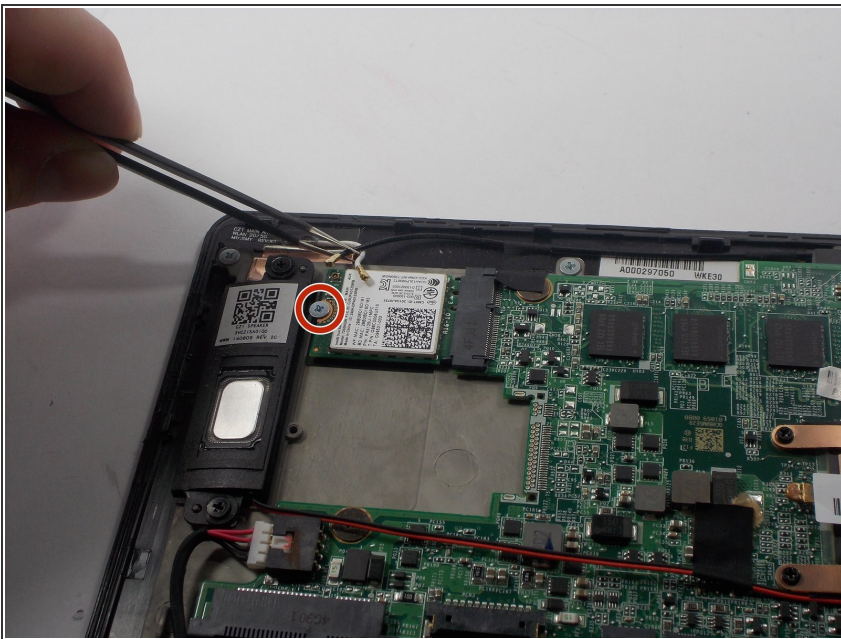


## Step 11



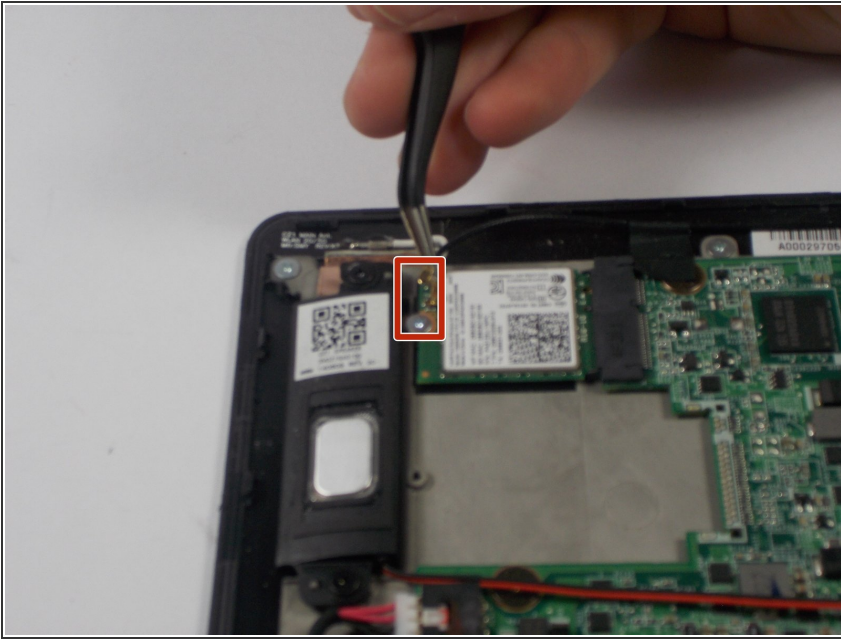
- Remove the heat sink fan.
- ⓘ The heat sink cover may be hard to peel off the first time due to the adhesive.

## Step 12 — Wifi Card



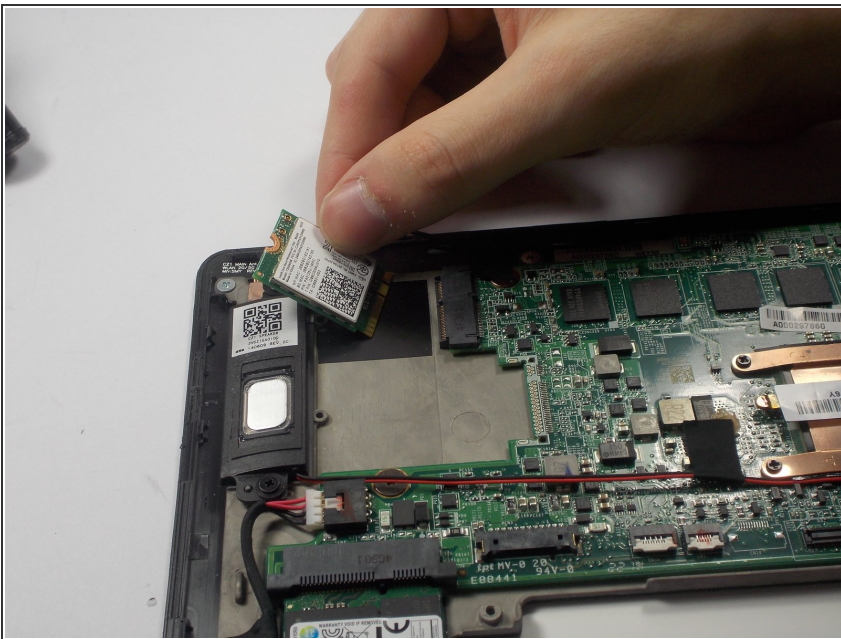
- Remove the 3mm screw J0 Phillips screw with the Phillips screw driver.

## Step 13



- Remove the black and white cables attached using ESD safe tweezers.

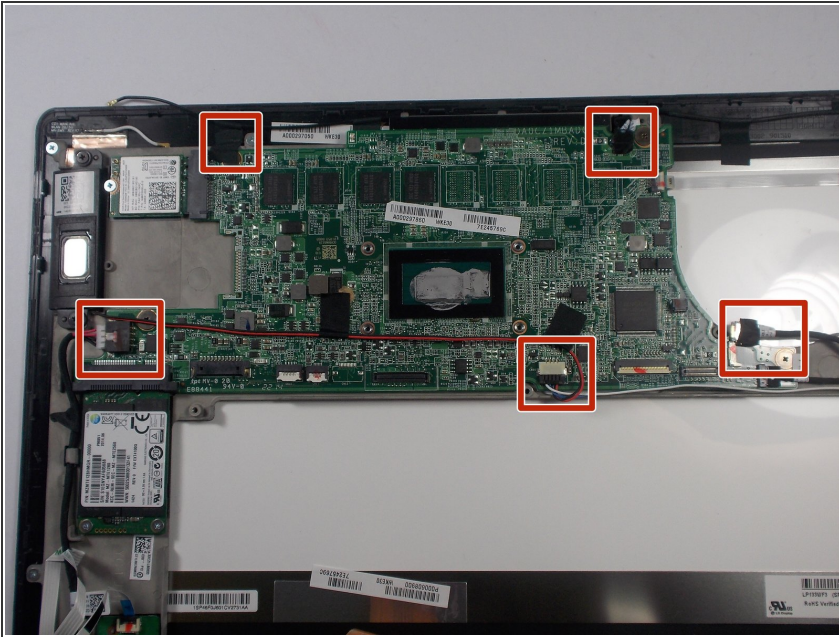
## Step 14



- Remove wifi card.

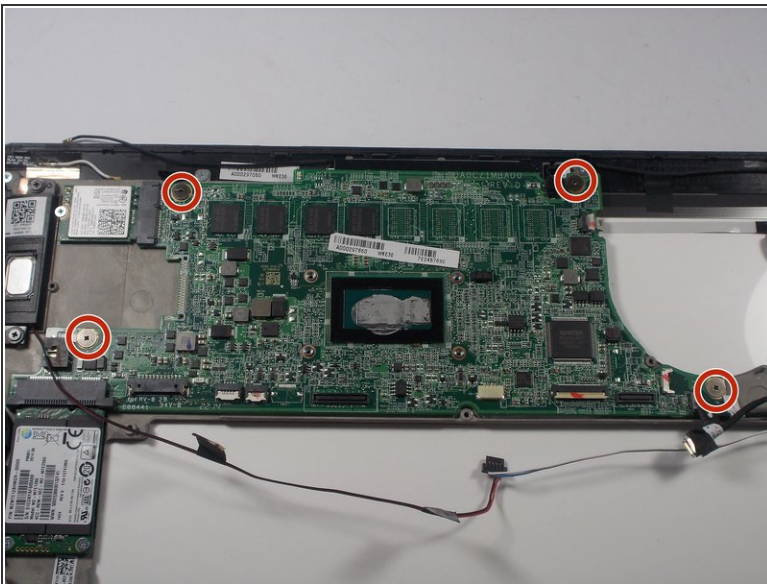


## Step 15 — Motherboard



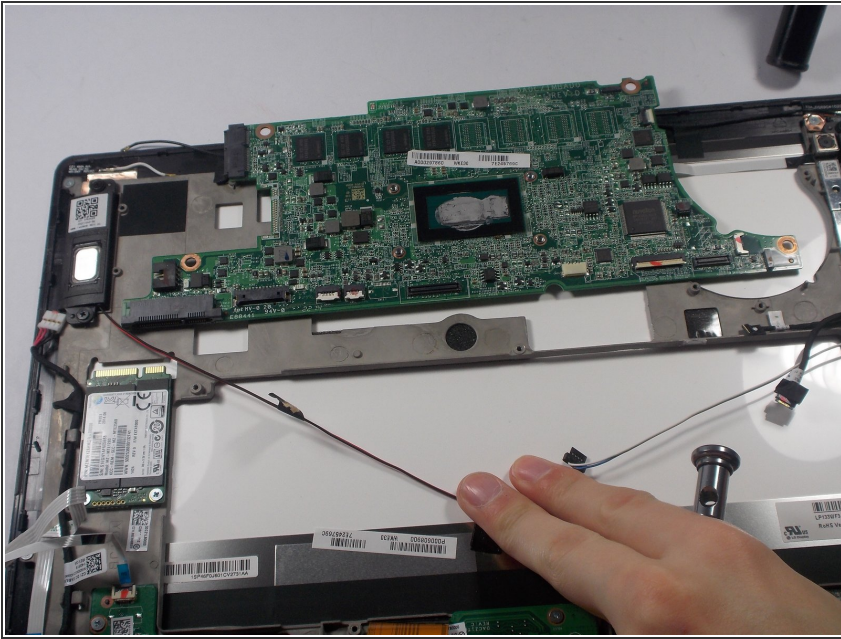
- Locate and remove the five connectors using ESD safe tweezers.

## Step 16



- Remove the four 3.0mm Phillips J0 screws using a Phillips screw driver.

## Step 17



- Remove the motherboard.

To reassemble your device, follow these instructions in reverse order.