



Sony SRS-BTX500 Motherboard Replacement

This guide will provide a step-by-step process for replacing a faulty motherboard to restore the Sony SRS-BTX500 to working condition.

Written By: Cody Moring



INTRODUCTION

This guide will teach you how to replace the motherboard. It requires opening the device and disconnecting all wires connected between the motherboard and the speakers.

TOOLS:

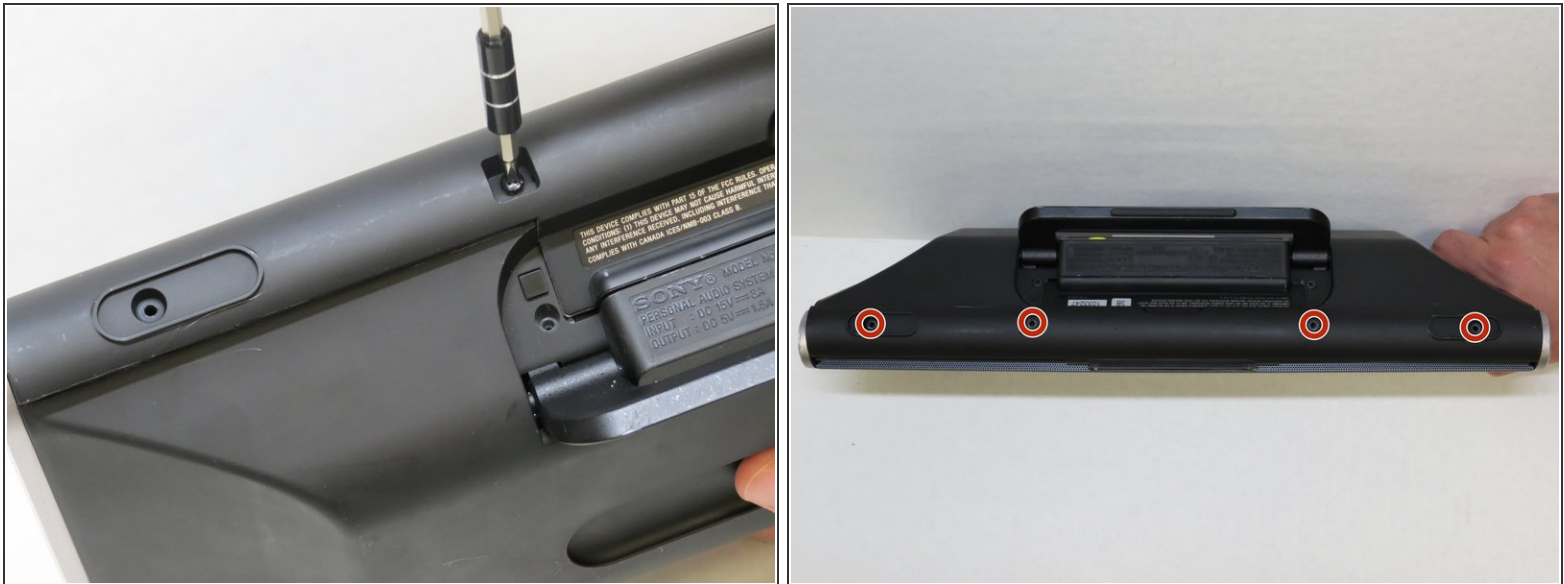
- [Phillips #1 Screwdriver](#) (1)
 - [iFixit Opening Tools](#) (1)
-

Step 1 — Battery



- Locate the four rubber grips on the bottom of the speaker. Use the plastic opening tool to remove the grips, exposing the underlying screws.

Step 2



- Using a Phillips #1 screwdriver, remove the four 5mm screws that were underneath the four rubber grips.

Step 3



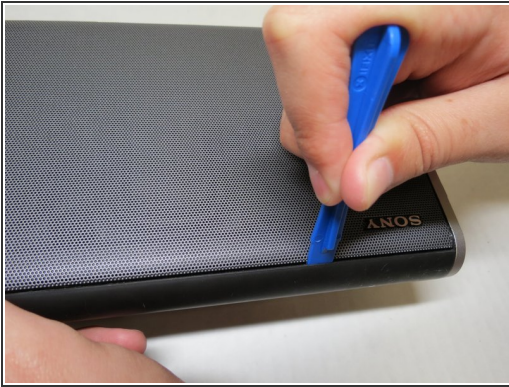
- Use the plastic opening tool to run along the outside edges of the speaker. Pry along the seams until you can remove the side panel of the speaker, exposing the battery.

Step 4



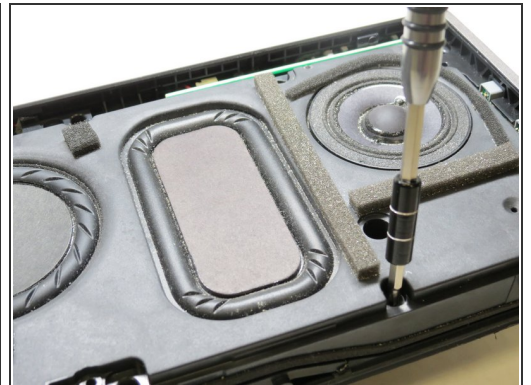
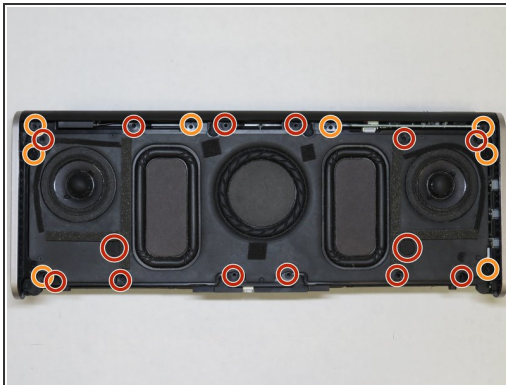
- Use the plastic opening tool to remove the battery from casing.
- Unclasp the battery from the speaker. Remove and replace.

Step 5 — Motherboard



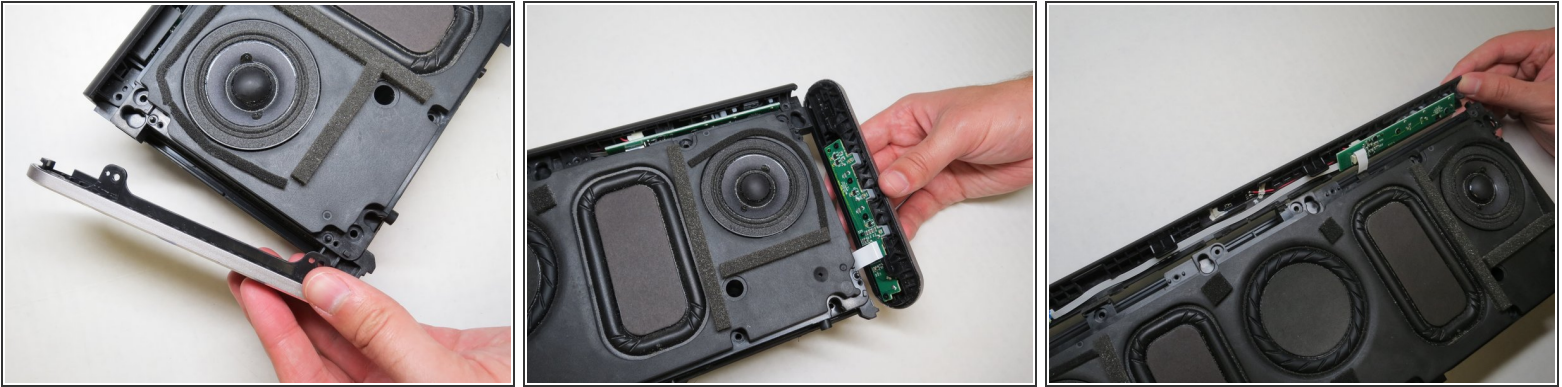
- With the front of the speaker facing you, run the plastic opening tool along the bottom of the speaker. Then push the face of the speaker at both ends before lifting it off.

Step 6



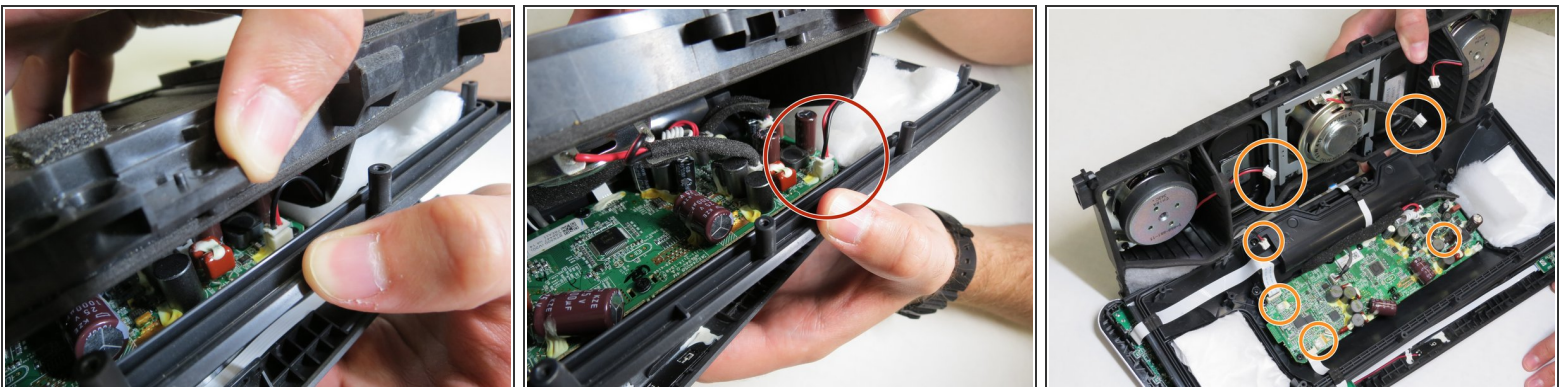
- Remove the two covers on the left and right with the small plastic opening tool to expose hidden screws.
- Use a Phillips #1 screwdriver to remove the 14 indicated screws size 7mm.
- Use a Phillips #1 screwdriver to remove the 8 indicated screws size 5mm.

Step 7



- Lift off the casing on the left, right, and top of the speaker.

Step 8



- Pull apart the speaker from the top. Unplug the indicated exposed wire that connects the speakers and the motherboard.
- After the first wire is disconnected, separate the other connecting wires.

To reassemble your device, follow these instructions in reverse order.