



Nabi 2 Charging Port Replacement

This guide will demonstrate how to replace the Nabi 2's charging port.

Written By: Trevor Westergard



INTRODUCTION

This guide will demonstrate how to remove and replace your Nabi 2's charging port. The charging port allows the charging cable to attach to the device, and over time the part may stop functioning correctly. There are many reasons to perform this repair, but the most common causes are the port becoming loose, and the device not charging. This repair involves the use of a soldering iron; be very careful not to touch the hot end of the iron while it is plugged in. It is recommended to document the order of the charging port wires before you detach them so that you can attach the new battery's wires in the correct order.



TOOLS:

- [Phillips #00 Screwdriver](#) (1)
- [Phillips #000 Screwdriver](#) (1)
- [iFixit Opening Tools](#) (1)
- [Soldering Iron](#) (1)
- [Spudger](#) (1)
- [Tweezers](#) (1)



PARTS:

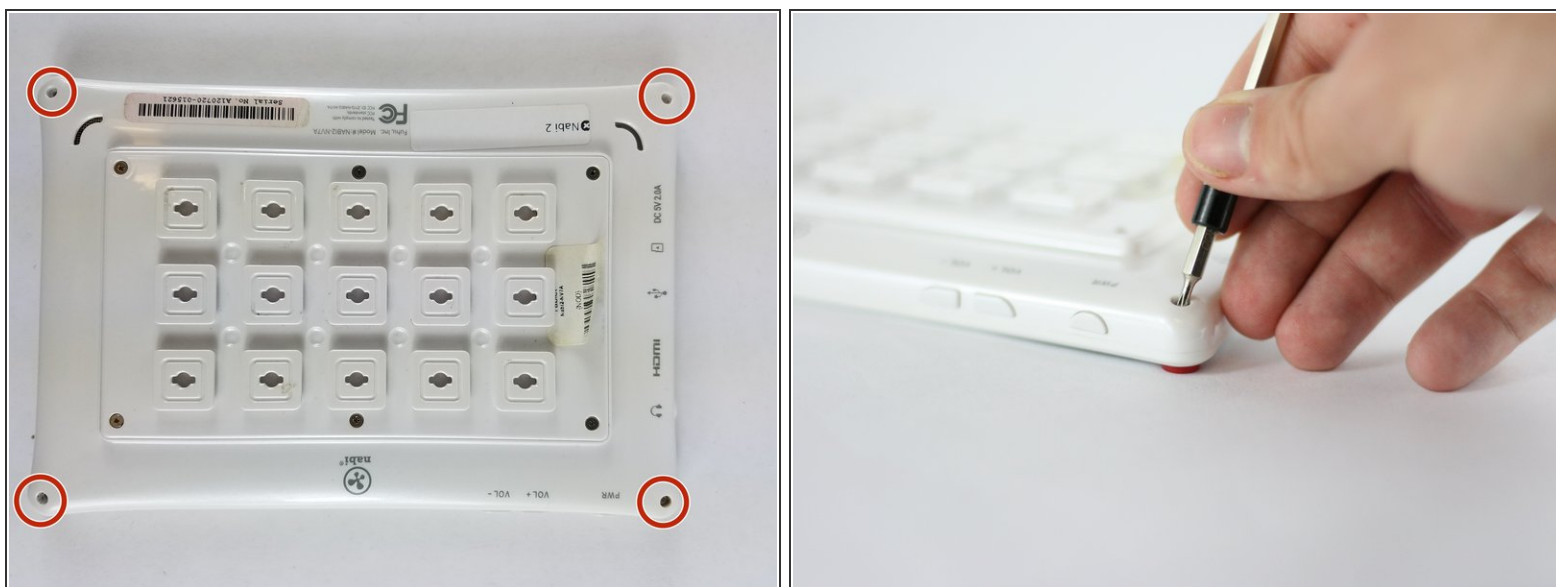
- [Fuhu Nabi 2 7" Bumper Bezel](#) (1)

Step 1 — Nabi 2 Back Cover Removal



- Remove the rubber bumper from the tablet.


Step 2



- With a PH00 screwdriver, remove the four outermost screws from the back of the tablet.

Step 3



- Carefully, insert a plastic opening tool into the seam of the device and begin gently prying the two plastic pieces apart.
 - Work the tool all the way around the device. Small plastic clips should release. If they do not, gently apply outwards pressure until the clips give.
-  Do not force the clips open, as they are fairly easy to break

Step 4 — Screen



- Lay the tablet down flat and remove the yellow tape from the ZIF connector on each side

Step 5



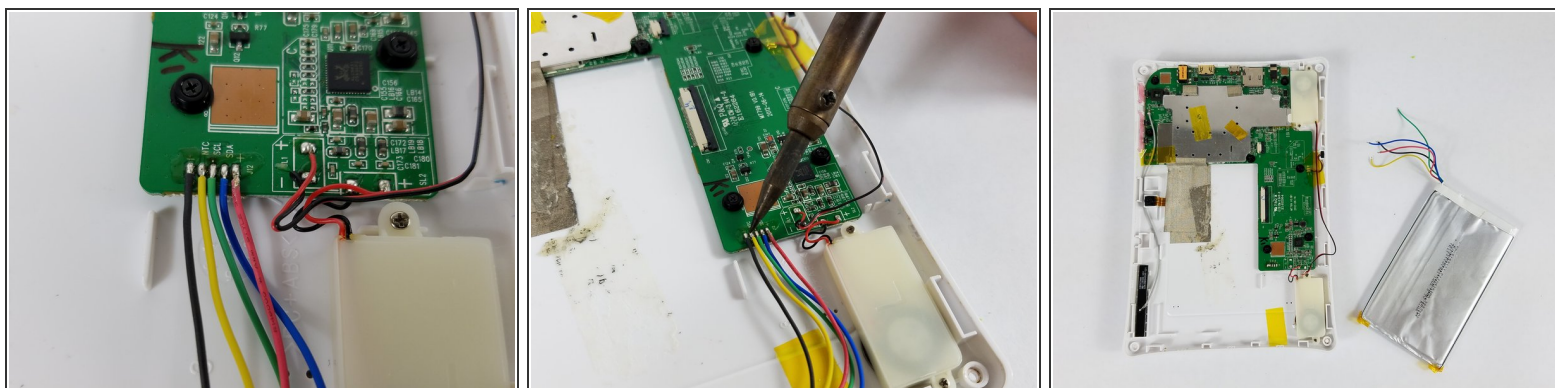
- Using a spudger, slide the brown tab forward on each side of the connector
- Slide until the connector is completely loose, then separate the screen from the bottom half of the tablet
- If the screen is not working correctly, you will need to replace the entire display assembly

Step 6 — Battery



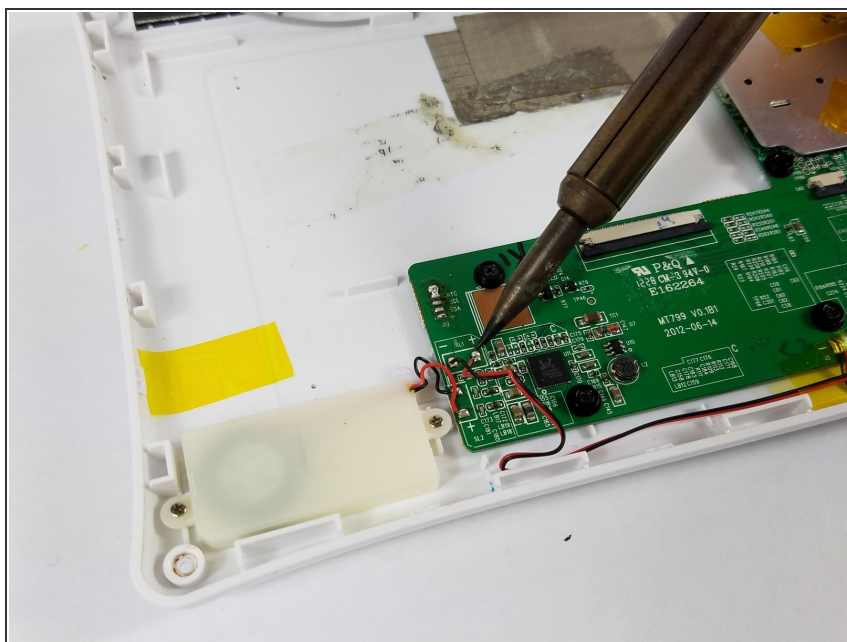
- Use the spudger to pop the battery out of place and set it aside.

Step 7



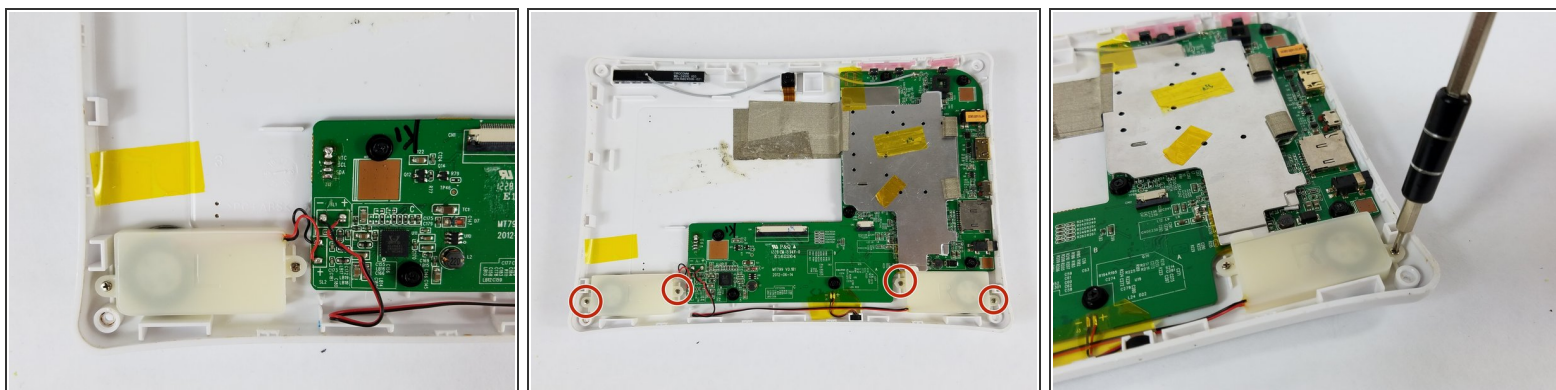
- Desolder the battery connection and remove the battery completely
- Note the color order for future replacement

Step 8 — Internal Speakers



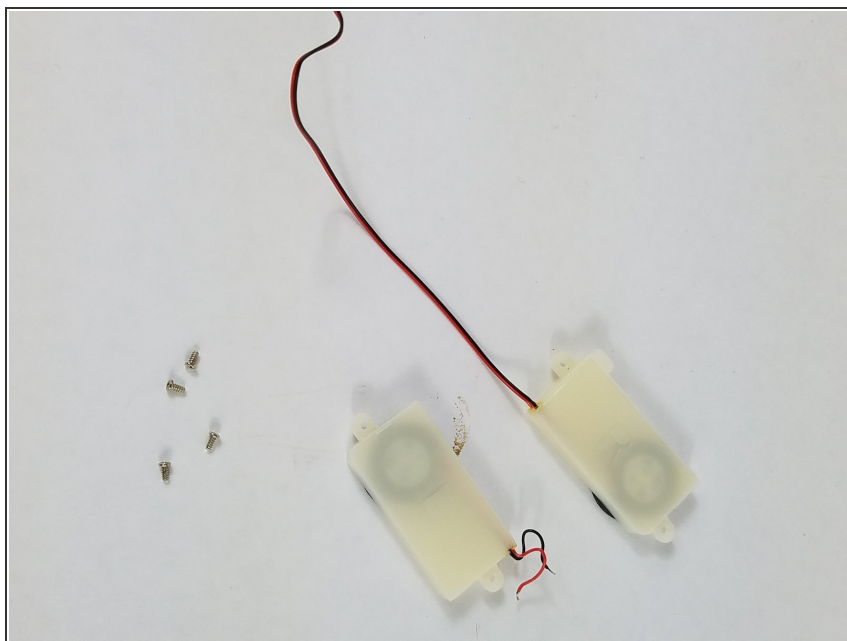
- Using the soldering iron, detach the speaker's wires from the circuit board.

Step 9



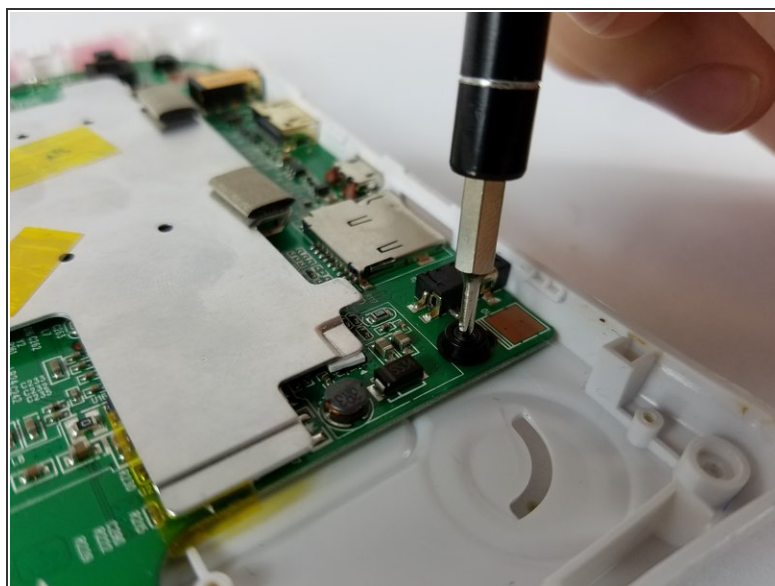
- Using a Phillips PH 000 screwdriver, unscrew the two 3 mm Phillips #000 screws on each side of the speakers that hold the speakers in place.

Step 10



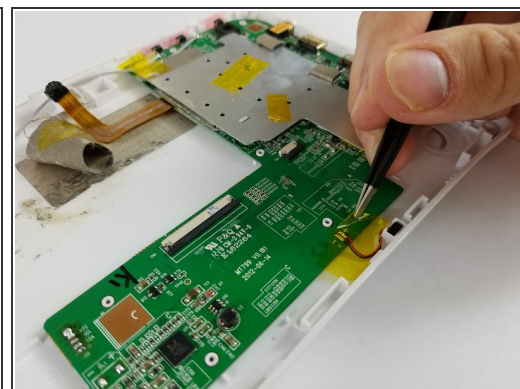
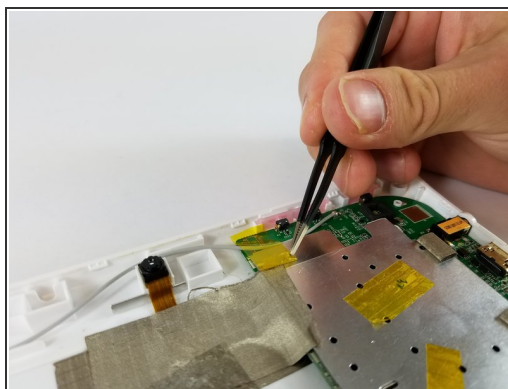
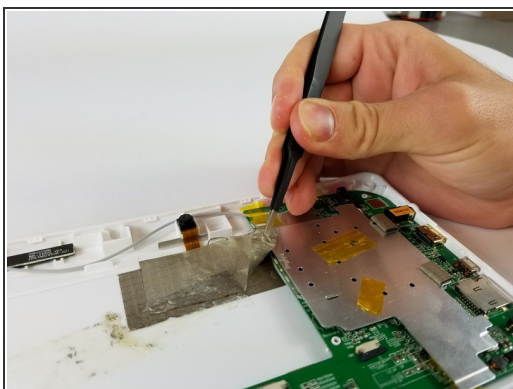
- Once the screws have been removed, remove the speakers from the device.

Step 11 — Motherboard



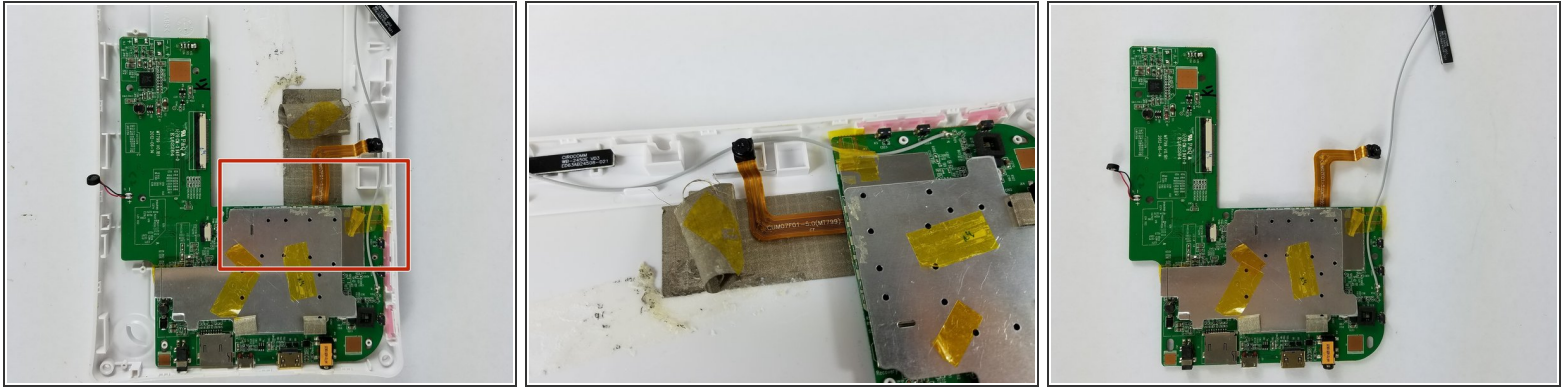
- Remove the seven 4 mm Phillips #000 screws with a PH#000 screwdriver

Step 12



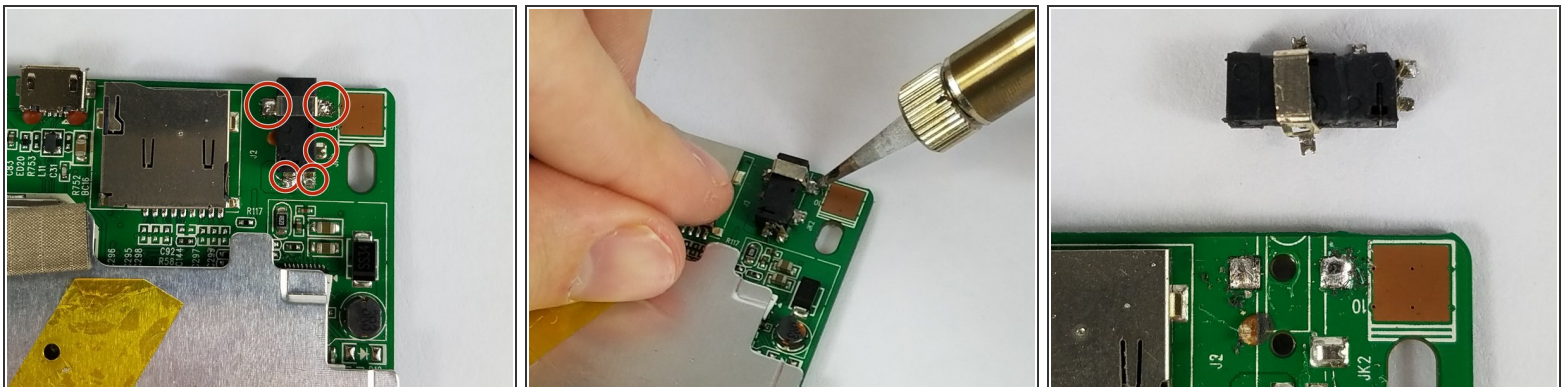
- Remove the tape that is attaching the motherboard to the plastic casing

Step 13



- Remove the motherboard by lifting from the area indicated

Step 14 — Charging Port



- Using a soldering iron, desolder the charging port from the motherboard
- Remove the charging port completely
- If the glue does not completely detach from the board, try to heat it until the charging port can be removed

To reassemble your device, follow these instructions in reverse order.