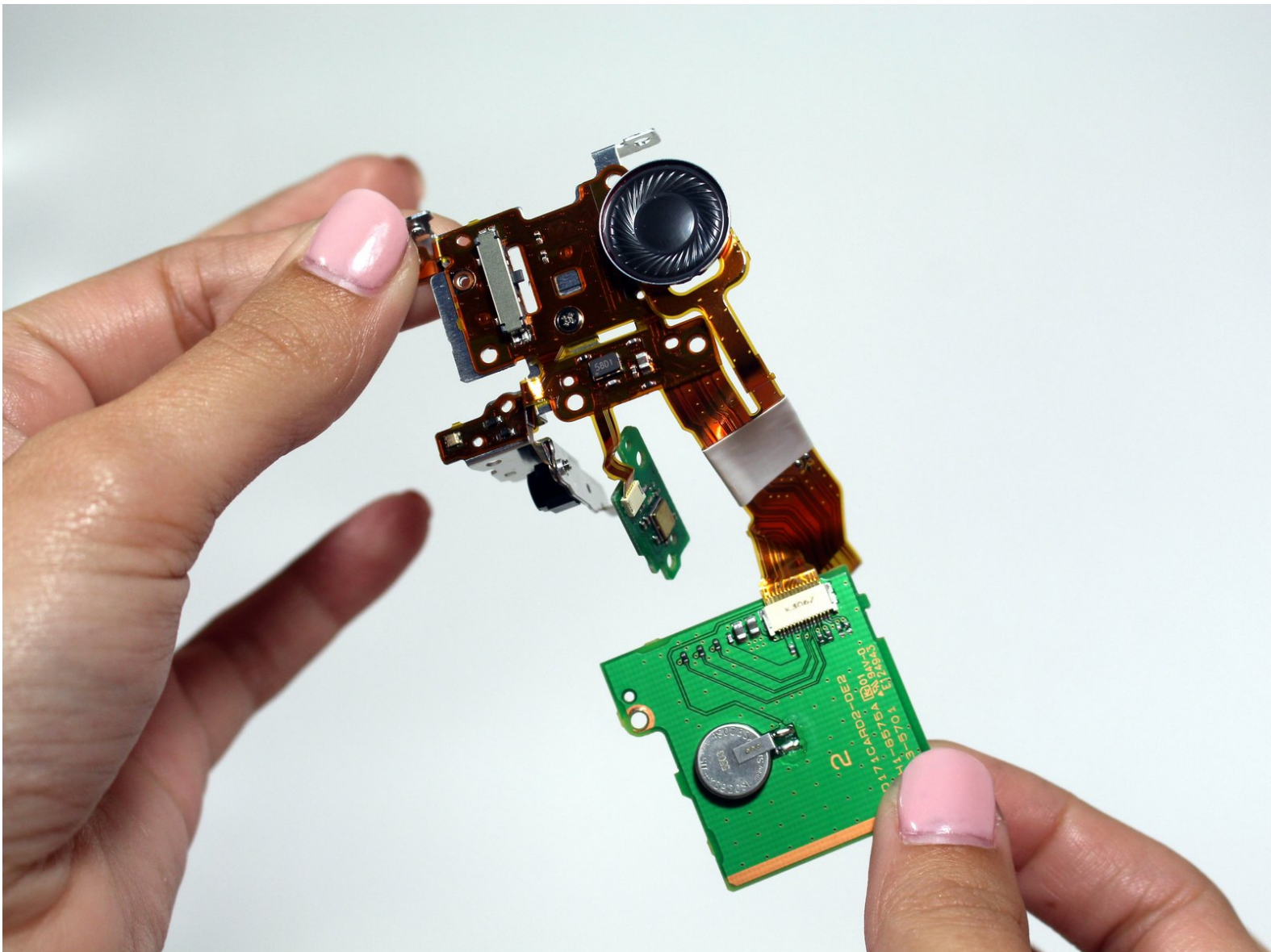




# Canon Vixia HF R600 Speaker Replacement

This guide will help you replace the camera's internal speaker assembly.

Written By: Logan Coats



## INTRODUCTION

If your camera's audio is low quality during playback, the speaker assembly may need replacing. This guide will help you remove this assembly; you may need to contact the manufacturer for a replacement part.



### TOOLS:

- [Phillips #00 Screwdriver](#) (1)
  - [JIS Driver Set](#) (1)
  - [iFixit Opening Tools](#) (1)
-

## Step 1 — Handstrap



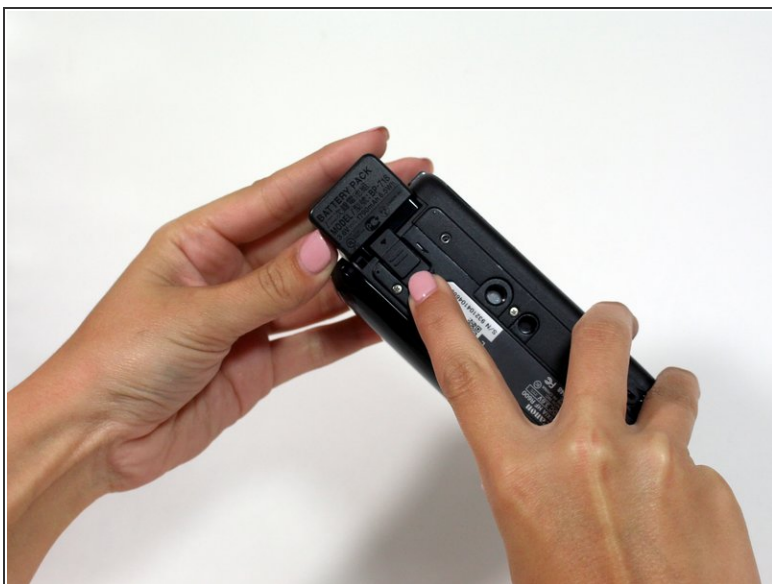
- Pull up the Velcro strap starting from the front of the camera and working your way towards the back.
- ⓘ If you are adjusting the hand-strap, tighten or loosen the Velcro strap accordingly and reattach it.
- To remove the hand-strap, pull the Velcro strip through the leather pad.

## Step 2



- Remove the strap from the camera body.

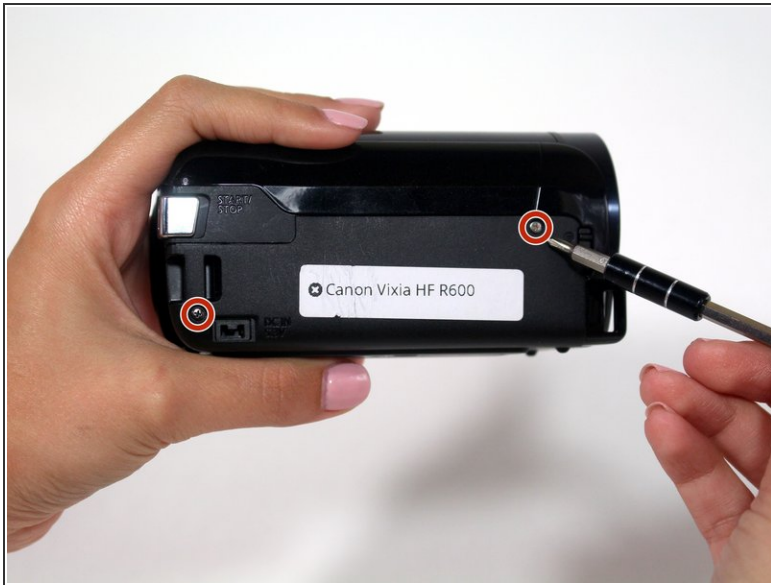
## Step 3 — Battery



- Press in the battery release tab located on the bottom of the camera.
- Slide the battery out from the body.



## Step 4 — Casing



- Start by removing the two 6mm Phillips #00 screws located on the right side of the camera.
- Remove four more 6mm Phillips #00 screws found on the bottom of the camera.

## Step 5



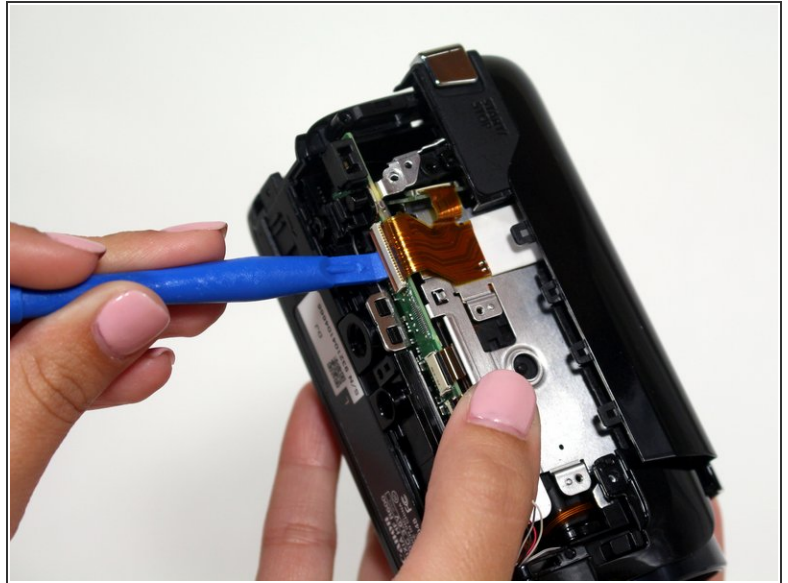
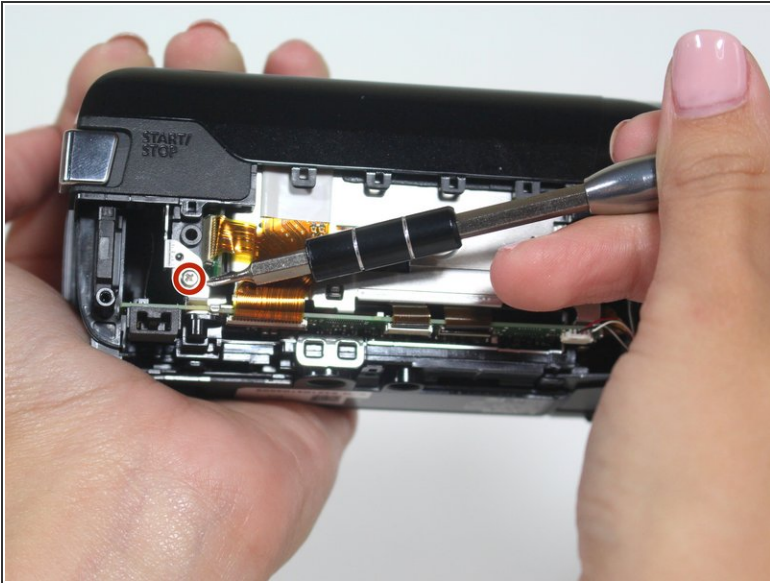
- Open the display screen and remove the three 5mm Phillips #00 screws.
- Look to the swivel point for the screen to find the last two 5mm Phillips #00 screws that must be removed.

## Step 6



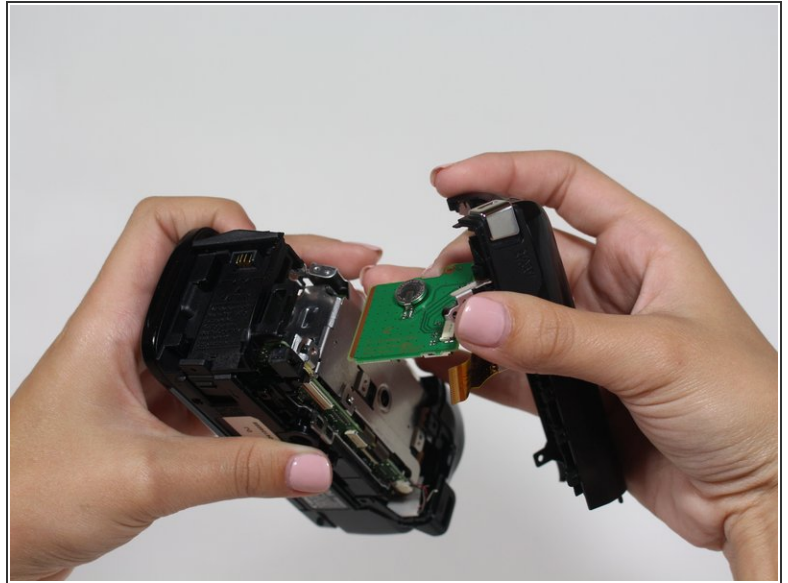
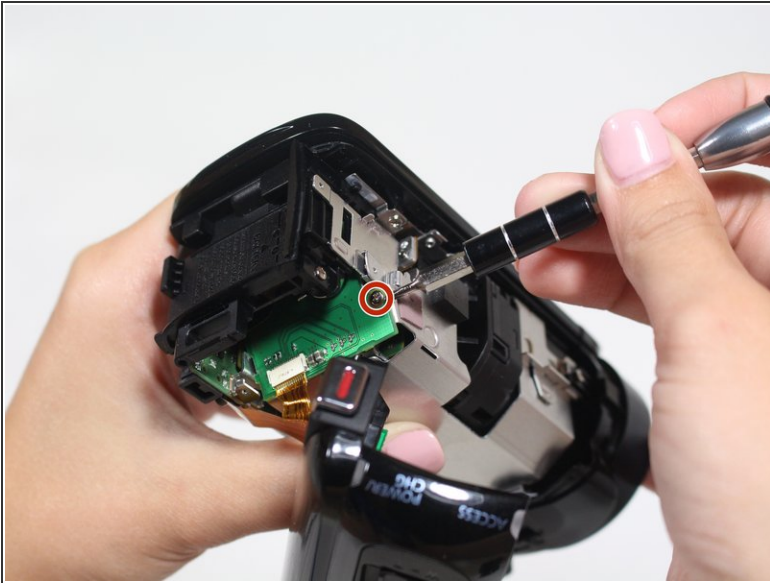
- Gently pull the plastic casing away from the camera.

## Step 7 — Speaker



- Remove one 4mm Phillips JIS#00 screw on the right side of the camera.
- Use the plastic opening tool to undo the bronze ribbon connector.

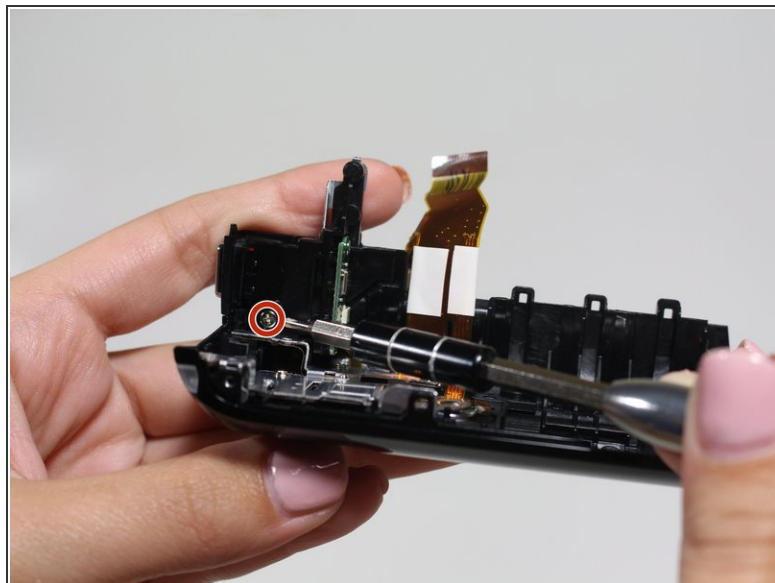
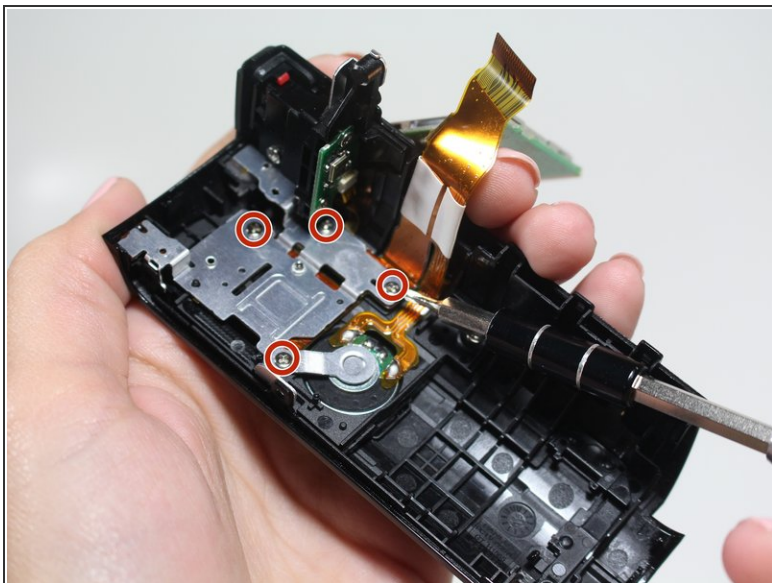
## Step 8



- Remove one 4mm Phillips JIS#00 screw located on the top of the camera near the battery connection.
- Pull the plastic casing away from the camera. The speaker and power button are housed in this casing.

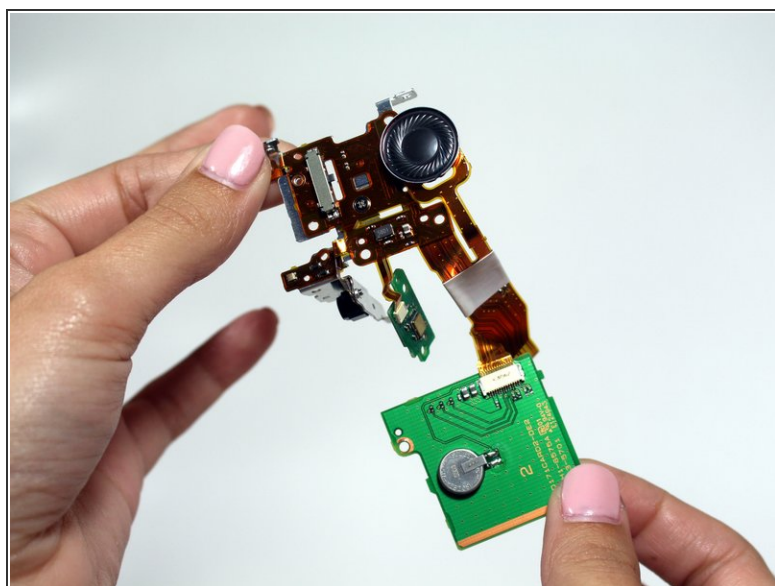
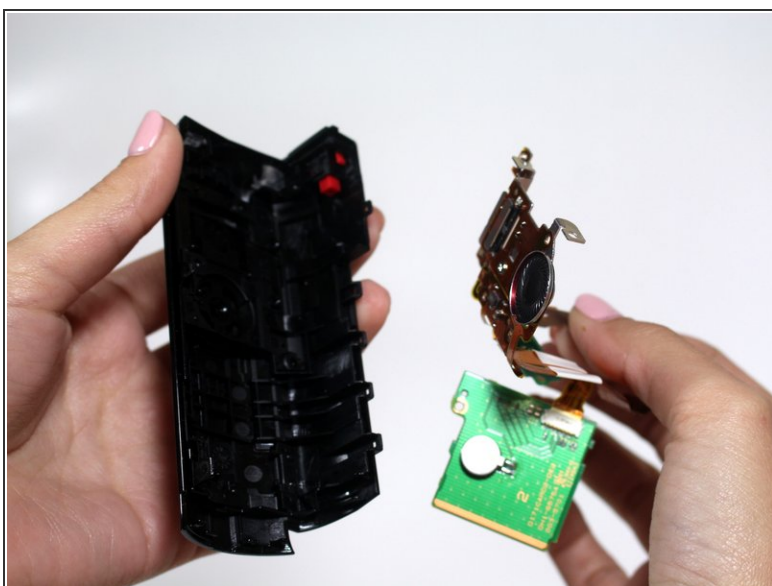


## Step 9



- Remove four 5mm Phillips PH#00 screws holding the speaker bracket in place.
- Remove one more 5mm screw below the power button.

## Step 10



- Carefully pull the speaker out of the casing.

To reassemble your device, follow these instructions in reverse order.