



Kindle Paperwhite 3rd Generation Screen/Display Touch Panel Replacement

Amazon's Kindle Paperwhite 3rd Generation...

Written By: Micah Smart



INTRODUCTION

Amazon's Kindle Paperwhite 3rd Generation possesses a six inch, 300 PPI display. This guide requires that the Kindle is turned off, and that a plastic opening tool, angled precision tweezers, and a PH000 screwdriver are used.

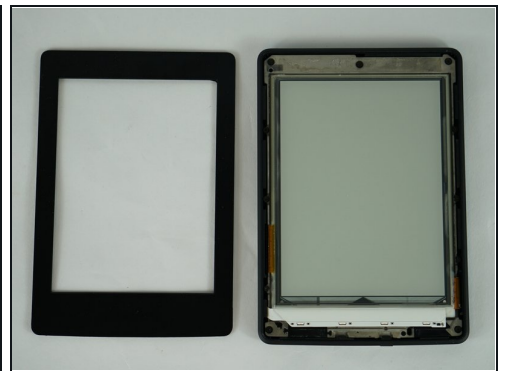
TOOLS:



[Phillips #000 Screwdriver](#) (1)
[Tweezers](#) (1)
[64 Bit Driver Kit](#) (1)
[iFixit Opening Tool](#) (1)
[Precision Tweezers Set](#) (1)
[Metal Spudger Set](#) (1)

PARTS:

[Kindle Paperwhite \(3rd Gen\) LCD and Digitizer](#) (1)

Step 1 — Battery



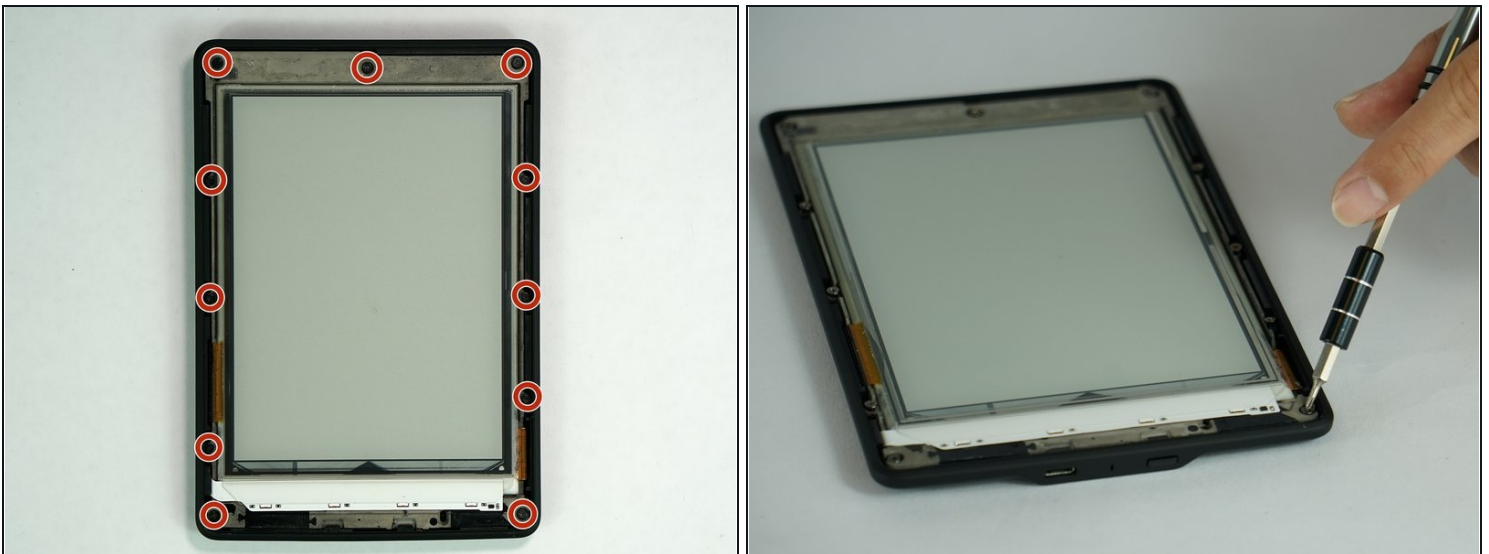
-  Ensure that the device is turned off before beginning.
 - Gently pry the bezel off the screen using a plastic opening tool. Start at the corners and slide around the edges until you return to your starting point.
-  Be careful if using the metal spudger, as it can scratch the surface of the Kindle.

Step 2 — Using caution



- Use extreme caution when prying up the bezel. Be careful not to allow your pry tool to fall underneath the display. Look under the cover as you work, separating the display from the adhesive of the bezel.
- You want to make sure your separator goes through both sides of the bezel over top of the display.
- The second photo is the layer you want your tool to pass through safely.
- The third photo is an example of what can go wrong. If this happens your digitizer layer will misread touches and the display is permanently damaged.

Step 3



- Unscrew the eleven 3.2 mm Phillips #000 screws surrounding the frame.

Step 4



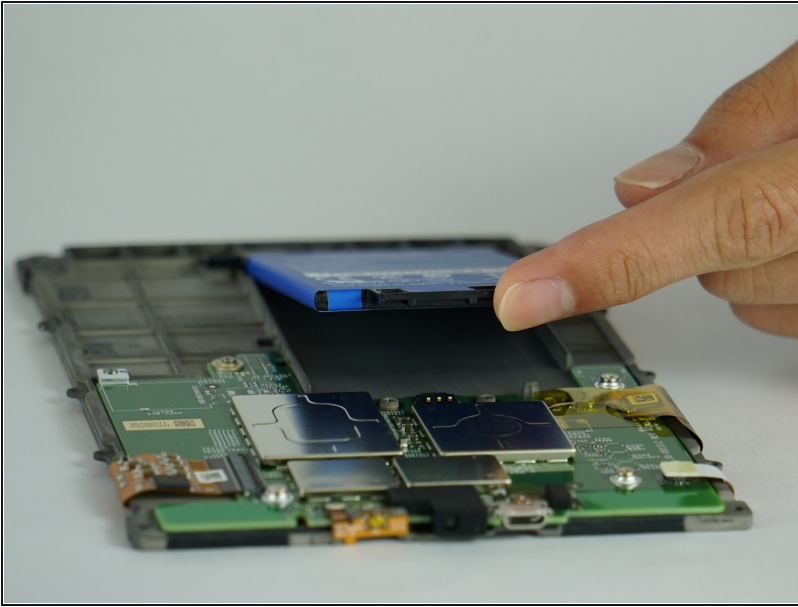
- Gently lift the mid-frame out of the case with your hands.
- ① Lift the side opposite of the power button out first.

Step 5



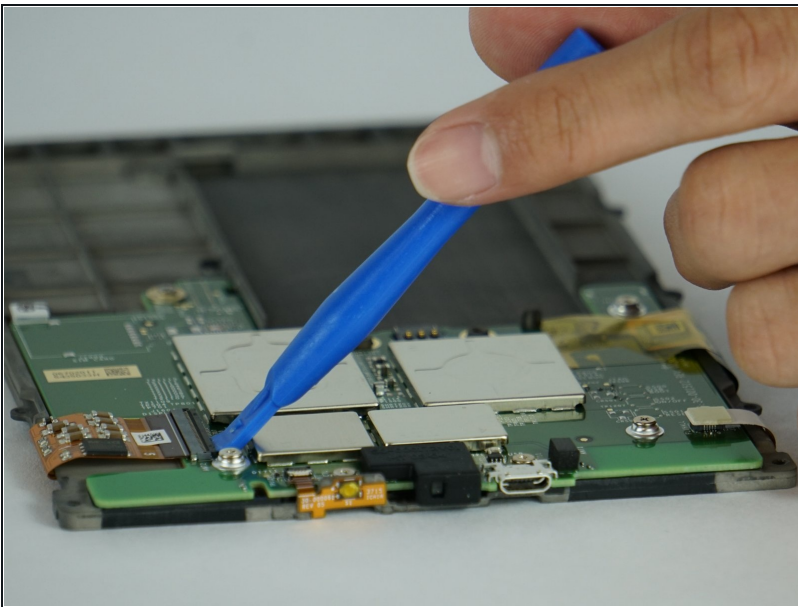
- Unscrew the three 3.0 mm Phillips #000 screws that are securing the battery.

Step 6



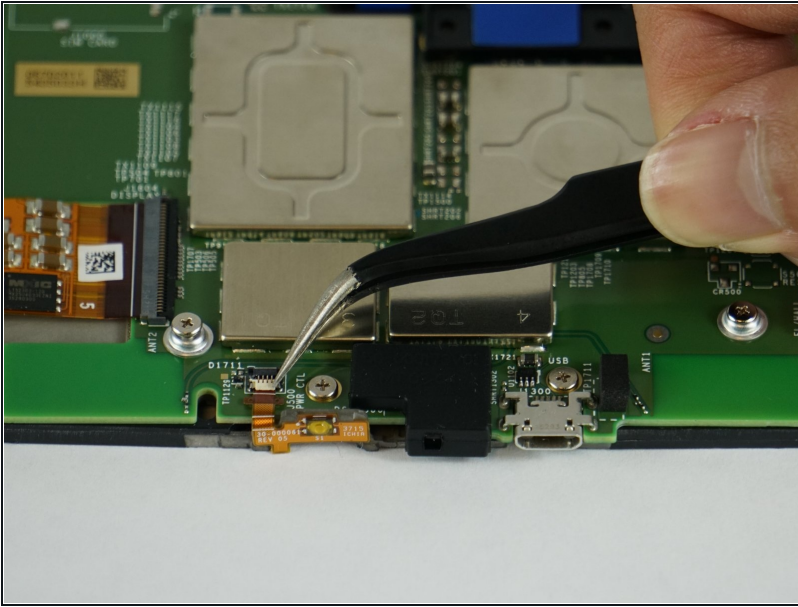
- Gently lift the battery from the frame.

Step 7 — Motherboard



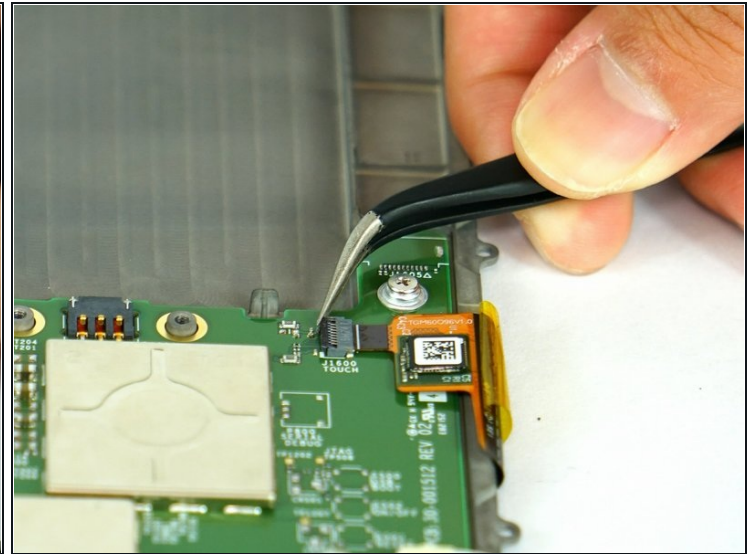
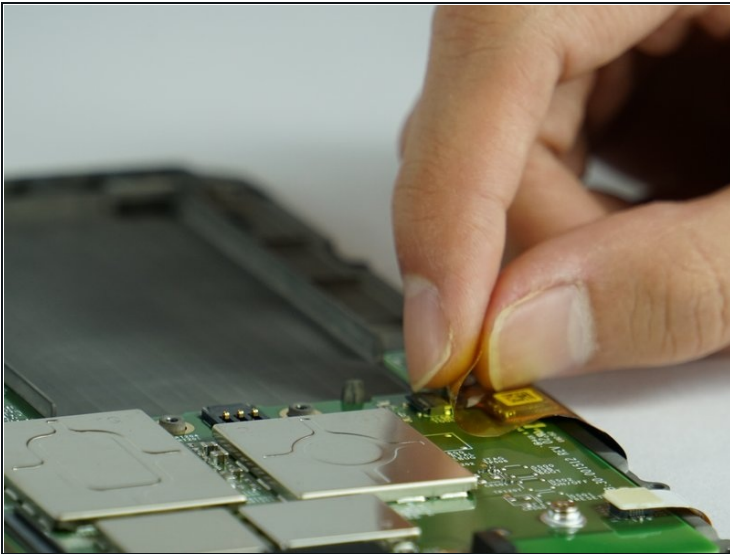
- Flip the black latch with a plastic opening tool, and then gently pull back the orange ribbon cable.

Step 8



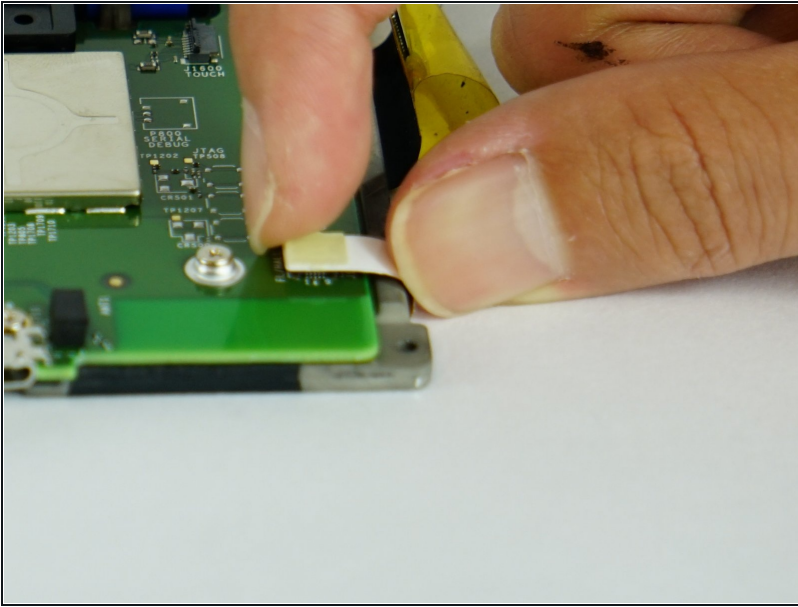
- Flip the tiny off-white latch with angled precision [tweezers](#) toward the direction of the battery.
- Gently peel back the orange ribbon cable.

Step 9



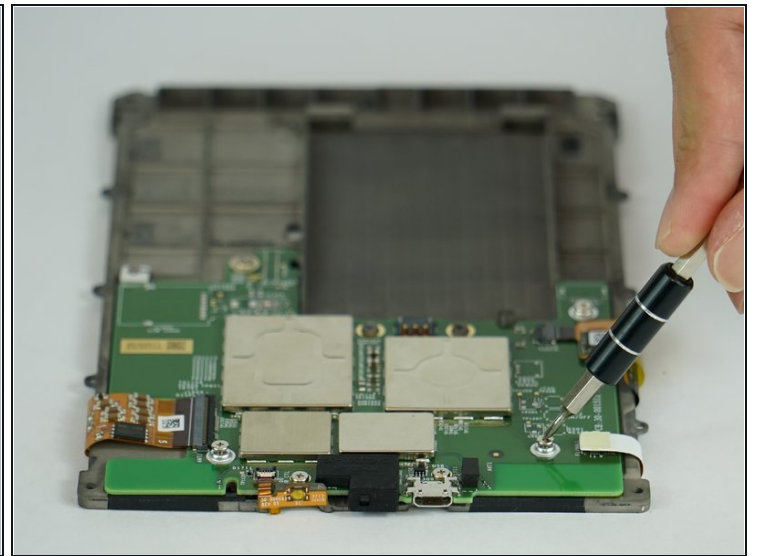
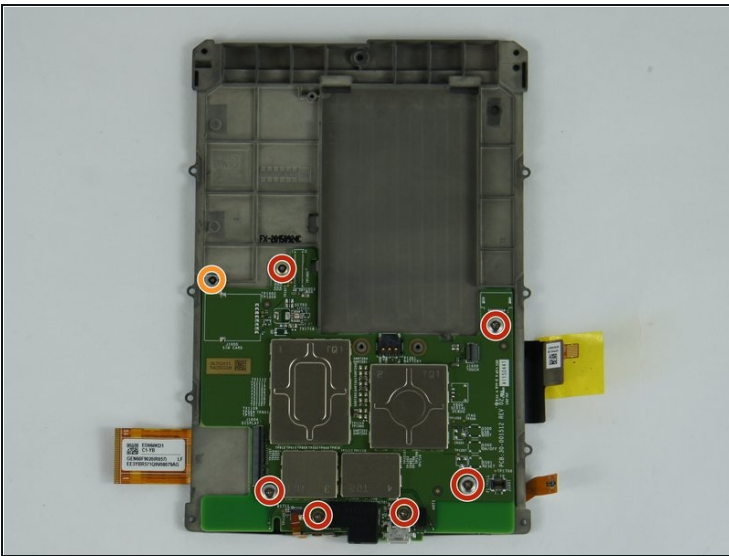
- Peel back the orange ribbon cable near the battery.
- Flip the tiny black latch with angled precision tweezers toward the closest edge of the device.

Step 10



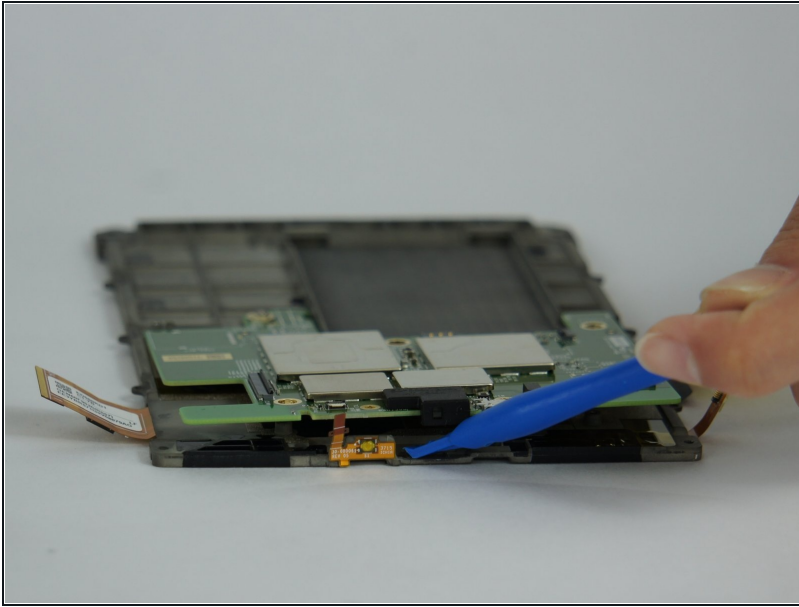
- Peel back the white connector with your fingers.

Step 11



- Unscrew the six 3.0 mm Phillips #000 screws surrounding the motherboard.
 - Unscrew the one 2.5 mm Phillips #000 screw.
- ⓘ There is a little metal plate underneath the 2.5 mm screw and washers under four of the 3.0 mm screws.

Step 12



- Use a plastic opening tool to lift the motherboard upwards from the frame.

Step 13 — Screen/Display Touch Panel



- ① The touchscreen is attached to the rest of the frame. Purchasing a new frame will require reattaching the motherboard and the battery.

To reassemble your device, follow these instructions in reverse order.