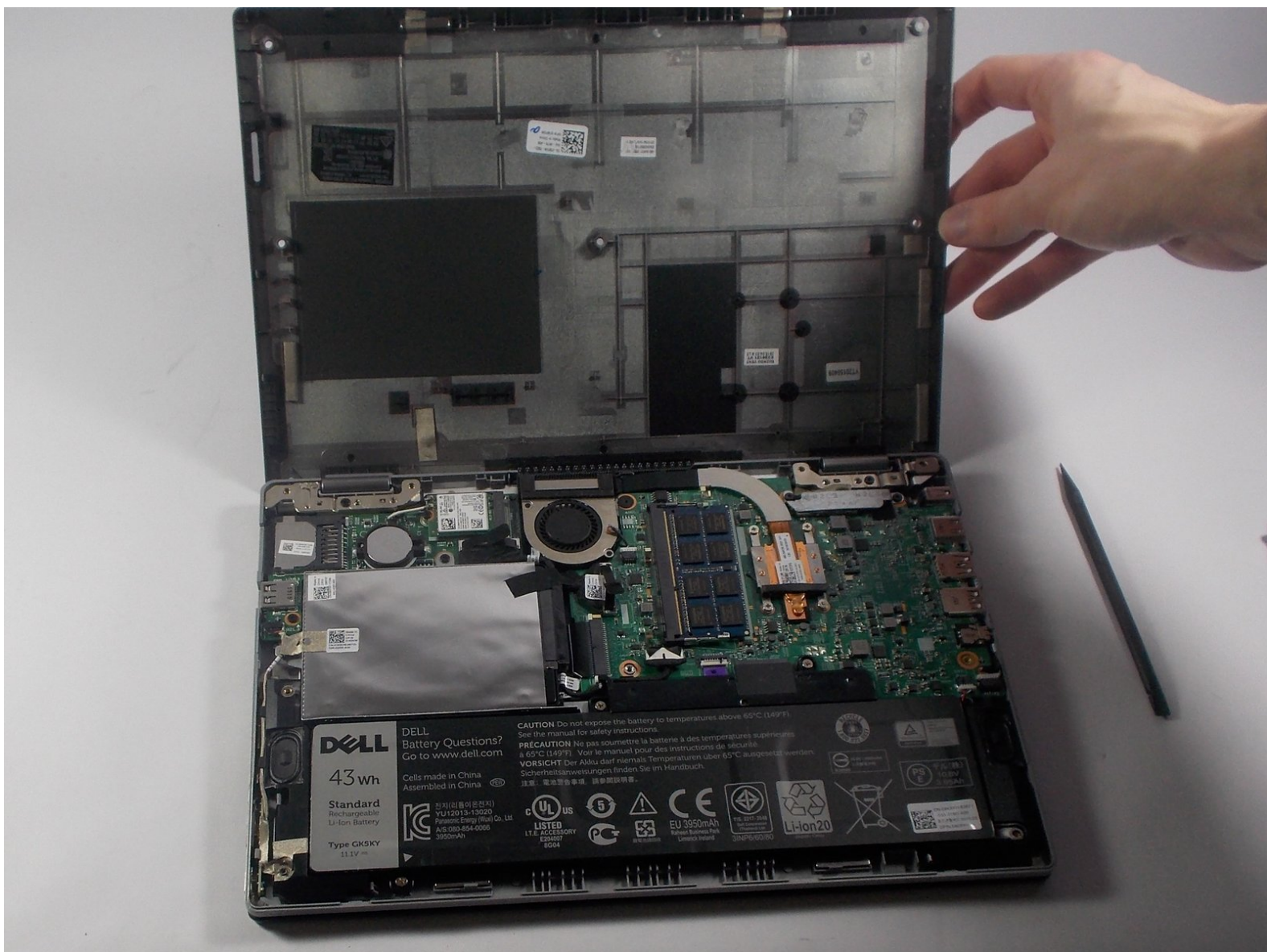




Dell Inspiron 11-3152 Battery Replacement

This guide will provide step by step instructions on how to locate, remove, and replace the battery in your Dell Inspiron 11-3152

Written By: Matthew Duncan



INTRODUCTION

In this guide, you will be replacing the battery to your Dell Inspiron. When finished, you should understand how to disassemble the back panel and remove the battery.



TOOLS:

- [Phillips #0 Screwdriver](#) (1)
 - [Spudger](#) (1)
 - [Phillips #1 Screwdriver](#) (1)
-

Step 1 — Back Panel



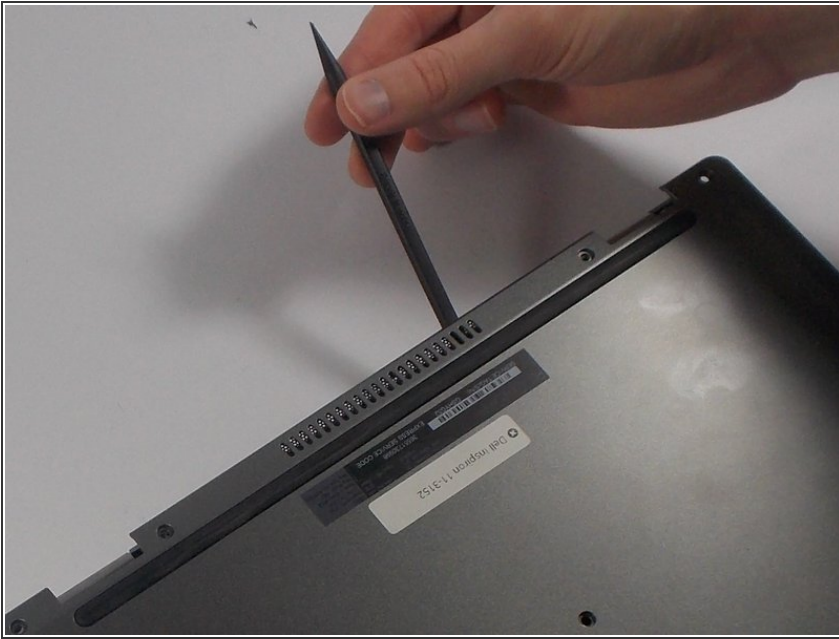
- Flip the computer over.

Step 2



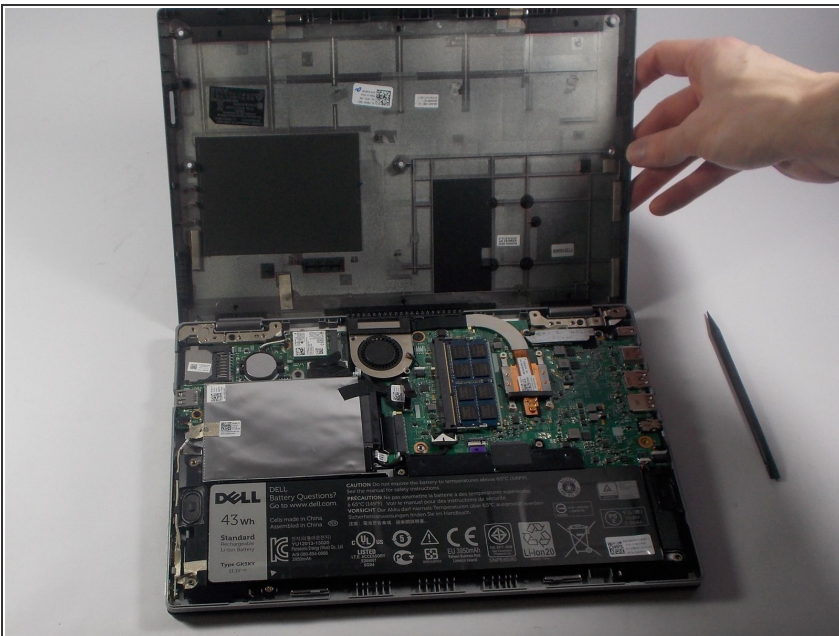
- Remove all nine 5mm Phillips head screws from the back cover using #0 Phillips head.

Step 3



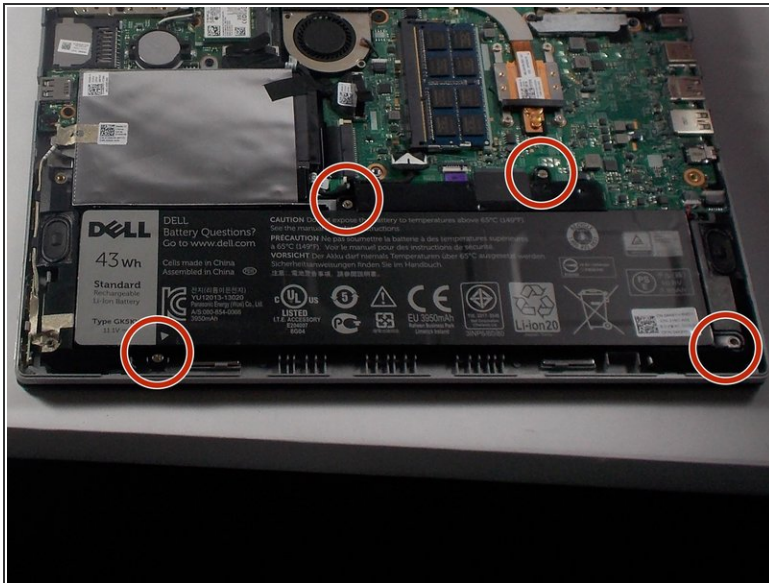
- Gently use a spudger to pull the cover away from the rest of the laptop. The cover will come off after you use the tool on two or three sides.

Step 4 — Battery



- ⚠ Make sure that the power is off.
- After taking off the back panel, you will see the battery located at the bottom of the computer system. It's black and is clearly labeled "dell battery".

Step 5



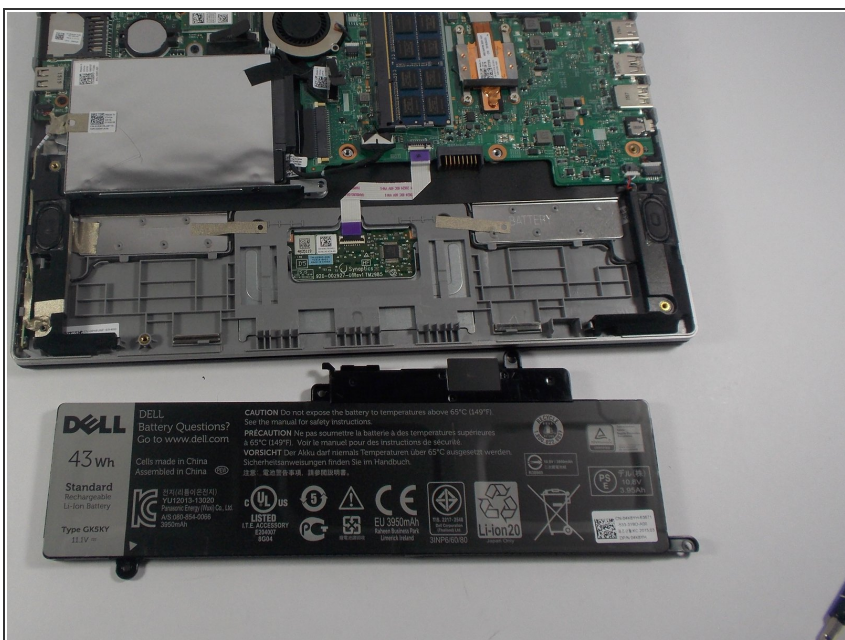
- Locate the battery at the bottom of the computer and remove the four 3mm screws with a Phillips #0 head that hold the battery down.

Step 6



- Remove the Solid State Drive wire from the battery clip by detaching the wire.
- This can be done by gently pulling the connector away from the battery clip.

Step 7



- Remove the battery from the computer system by gently lifting it from the side.

To reassemble your device, follow these instructions in reverse order.