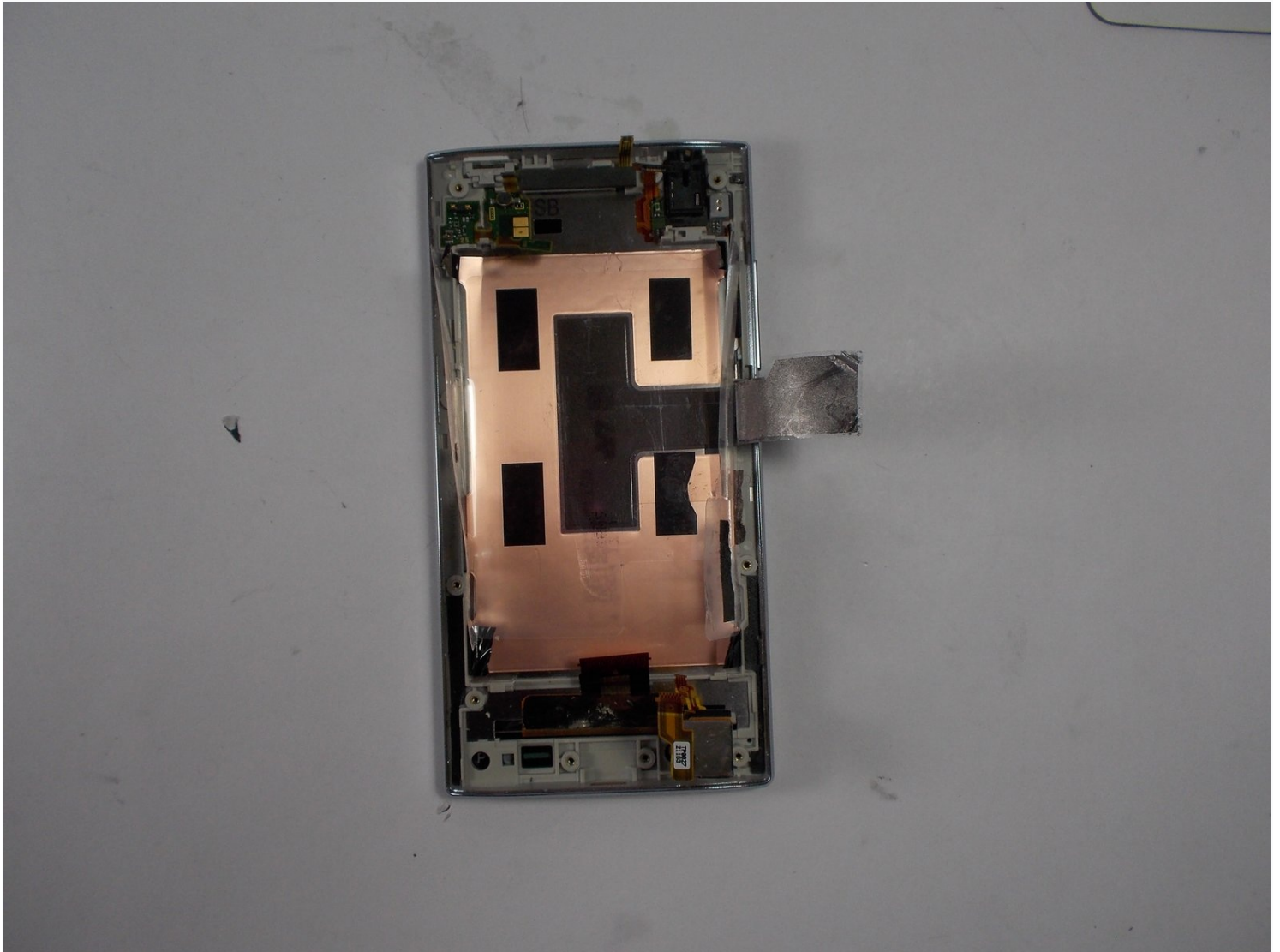




Sharp Aquos Crystal Digitizer Replacement

Replace the digitizer on your Sharp Aquos Crystal.

Written By: Felicia Imbriano



INTRODUCTION

Replace the digitizer on your Sharp Aquos Crystal.

TOOLS:

[iFixit Opening Tool](#) (1)

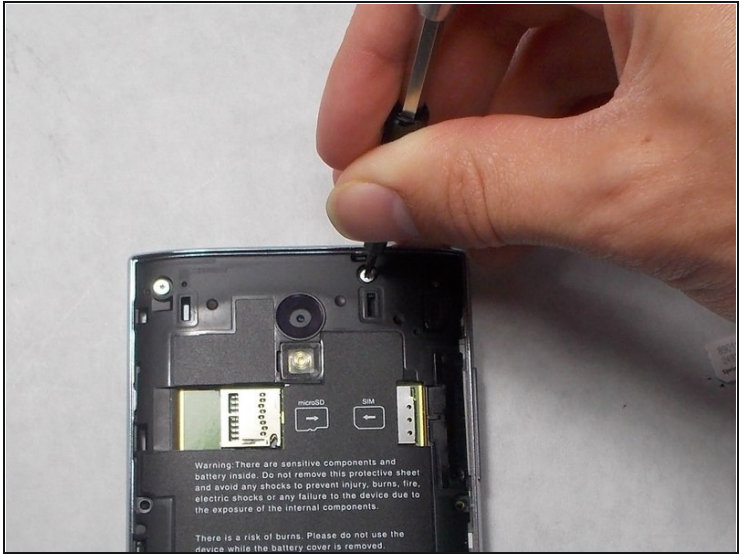
[Star Bit Screwdriver](#) (1)

Step 1 — Back Panel



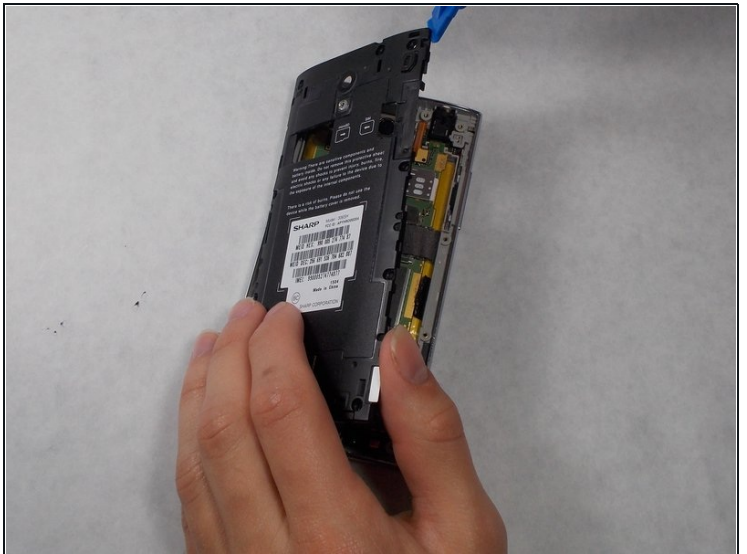
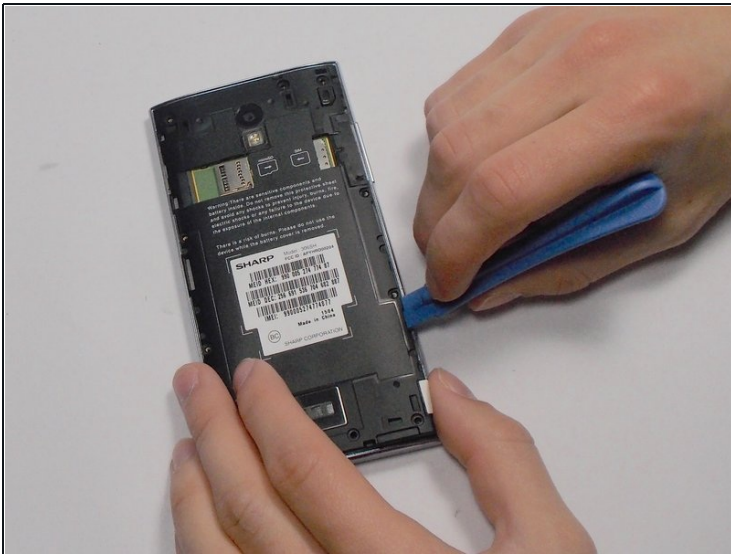
- Peel back the back cover of the phone from the access point to remove it. It should come off easily using your hands.

Step 2 — USB Port



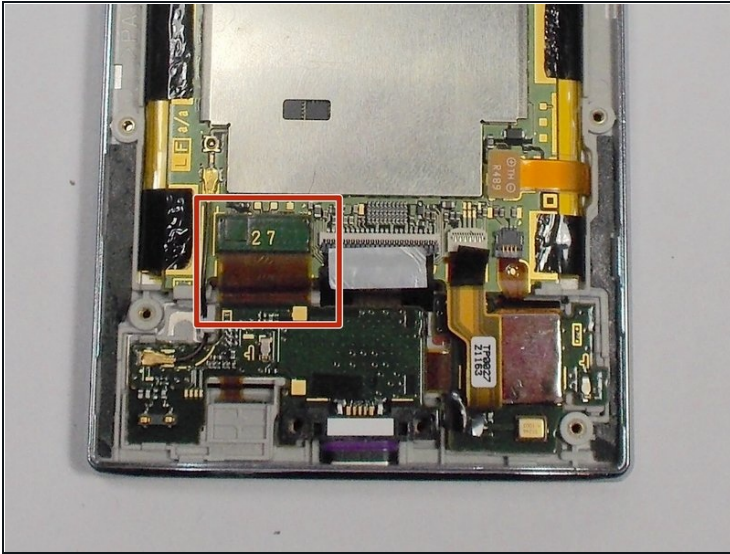
- Remove seven 3mm Star #5 screws shown in the picture with a screwdriver.
- Remove two 3.5mm Star #5 screws shown in the picture with a screwdriver.
- Remove two 5mm Star #5 screws shown in the picture with a screwdriver.

Step 3



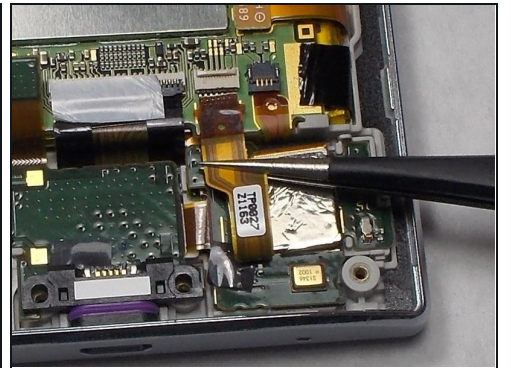
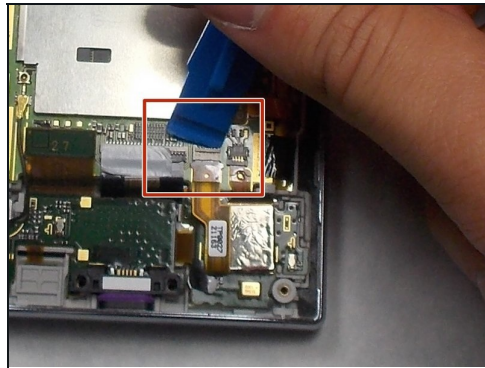
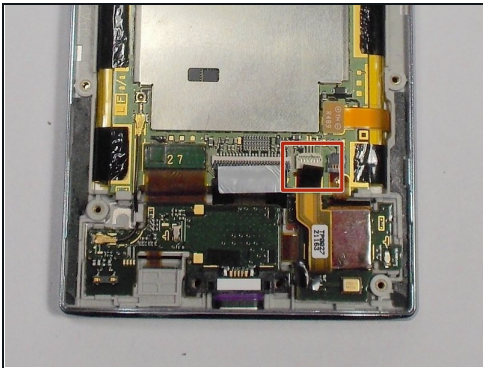
- Pry open the back panel using a plastic opening tool. Do this around the edges until you are able to lift it off.

Step 4



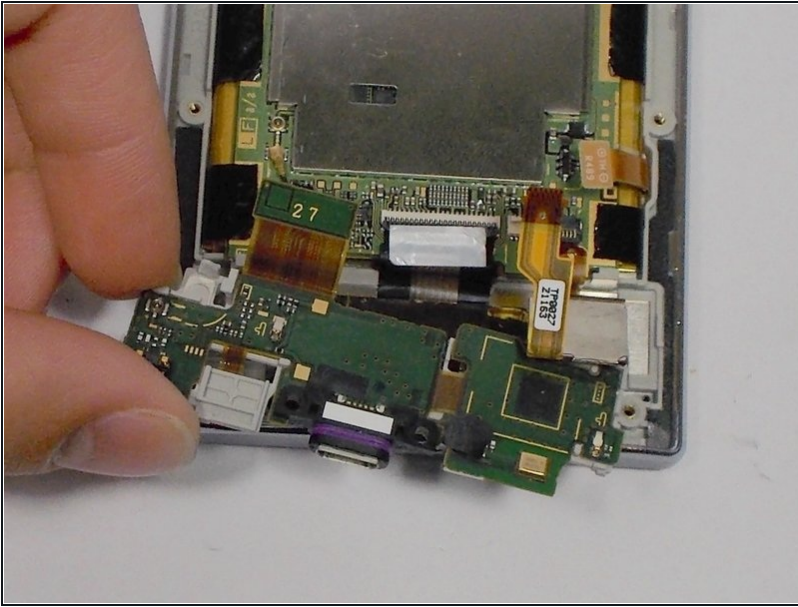
- Disconnect the wire by lifting it up with a plastic opening tool.

Step 5



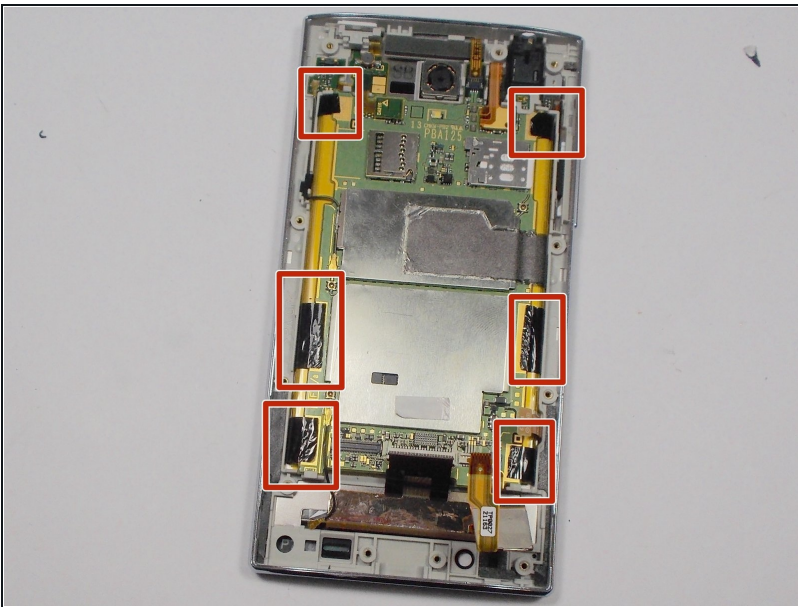
- To disconnect the cable, use the tip of a spudger or your fingernail to flip up the small retaining flap. Then, you can safely pull the ribbon cable out.

Step 6



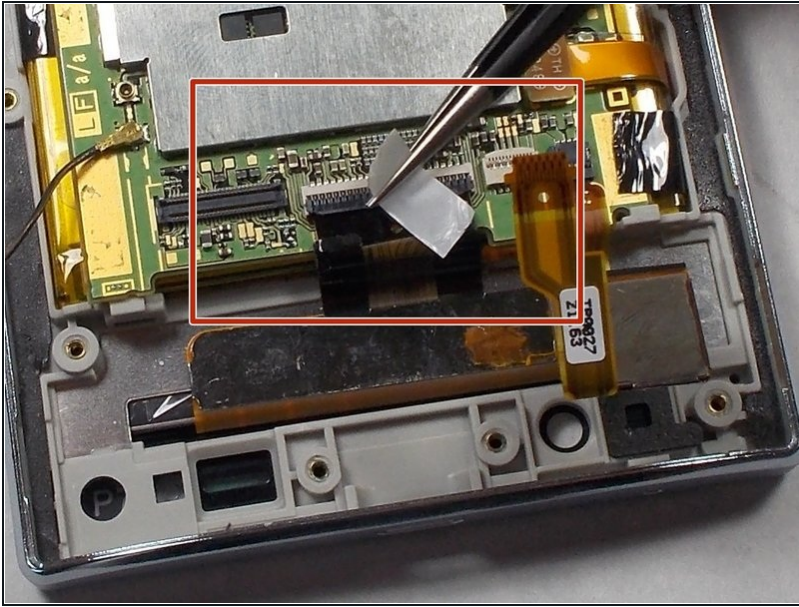
- After removing the wires, carefully snap out the usb port with your hands. It is held down by some plastic clips, so some force may be needed.

Step 7 — Motherboard



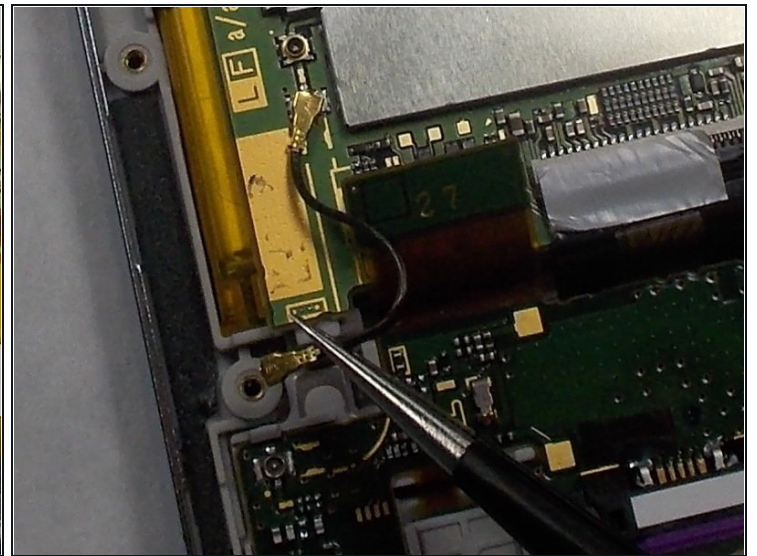
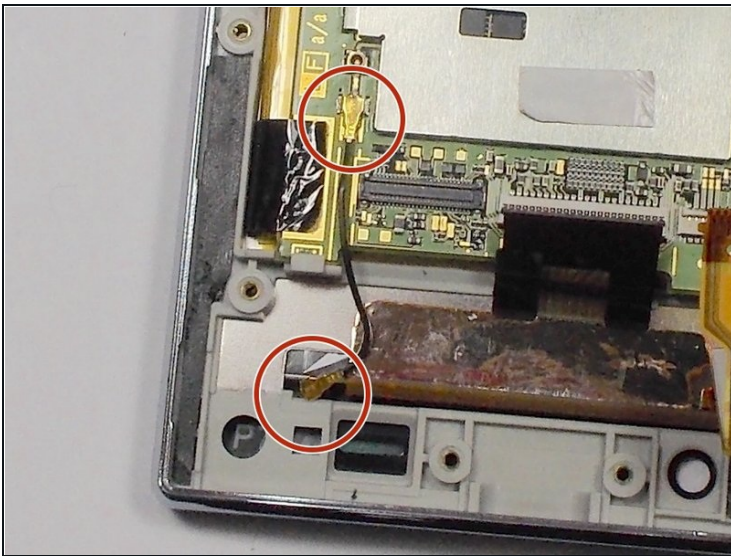
- Peel off the black pieces of tape.

Step 8



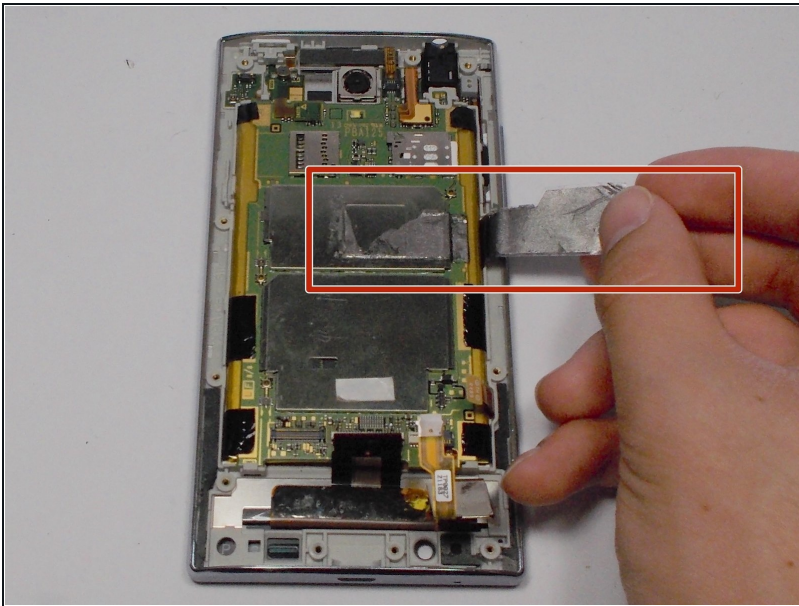
- Use the tip of a spudger or your fingernail to flip up the small retaining flap. Then pull the cable out using [tweezers](#).

Step 9



- Remove the wire from the two marked connections using tweezers to pull the wire apart from the device.

Step 10



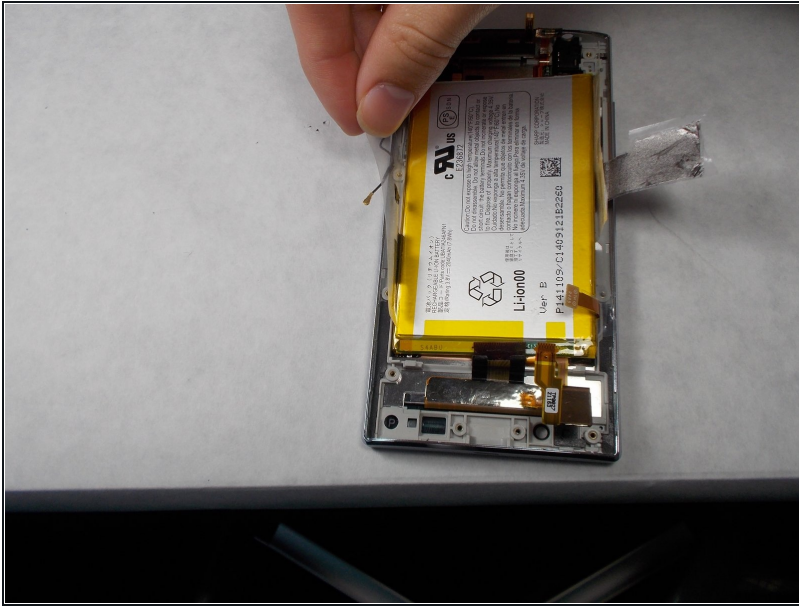
- Peel the tape off with your hands.

Step 11



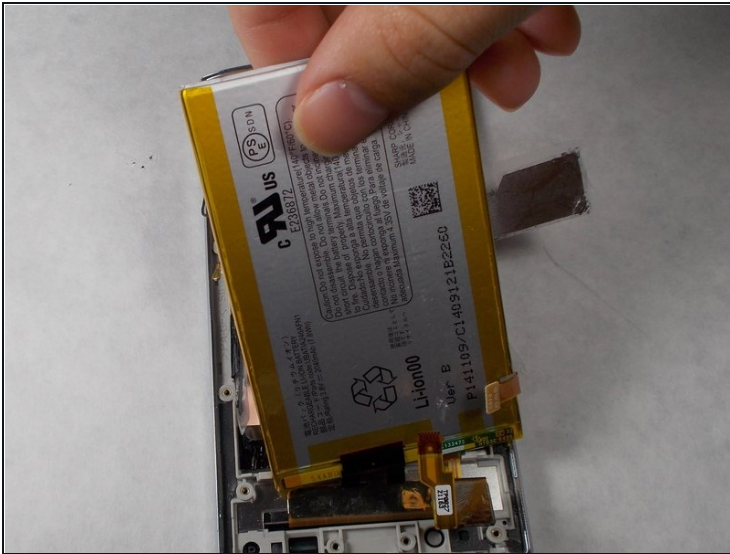
- Lift the motherboard out with your hands.

Step 12 — Battery



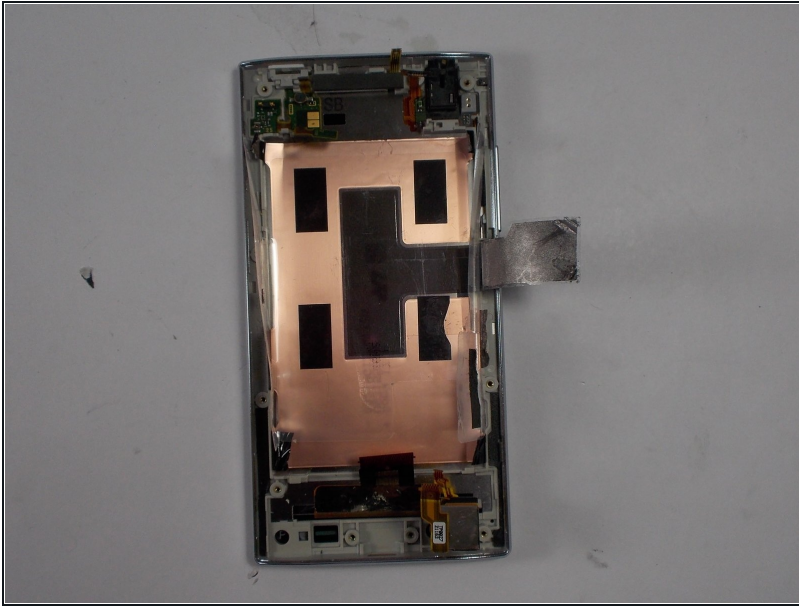
- Peel off the tape holding the battery down.

Step 13



- Lift the battery out with your hands.

Step 14 — Screen



- Replace this component with the new one.

To reassemble your device, follow these instructions in reverse order.