



How to Fix a Sticking Deadbolt

This guide will assist users in fixing a sticking deadbolt, so a lock will work properly.

Written By: Elizabeth Nesler



INTRODUCTION

A sticking deadbolt is a common nuisance for homeowners. It can be caused by debris, weather, and general wear and tear. This guide will instruct users how to repair a sticking deadbolt. Fortunately, this is an intermediate fix and the estimated time to complete this repair is thirty to forty-five minutes.



TOOLS:

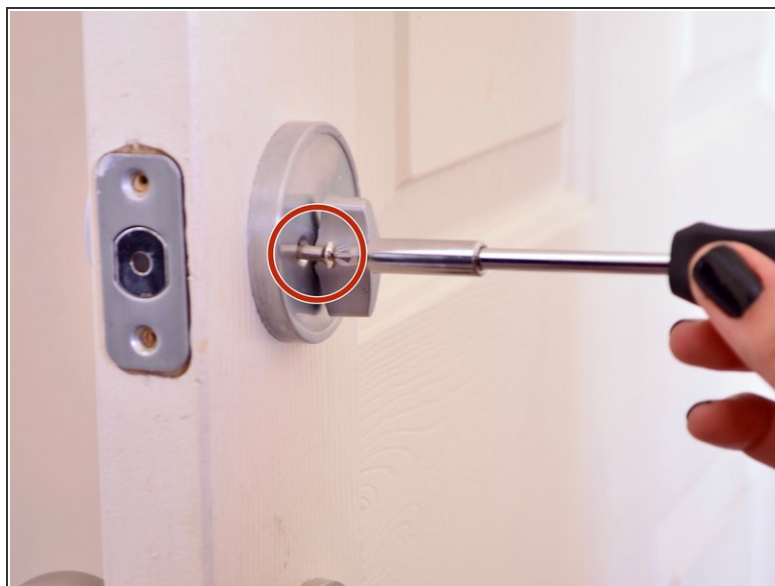
- [Phillips #0 Screwdriver](#) (1)
 - [GumOut Parts Cleaner](#) (1)
 - [Dry Powdered Graphite](#) (1)
-

Step 1 — How to Fix a Sticking Deadbolt



- Use a Phillips screwdriver to remove both of the 3/4-inch screws from the strike plate.

Step 2



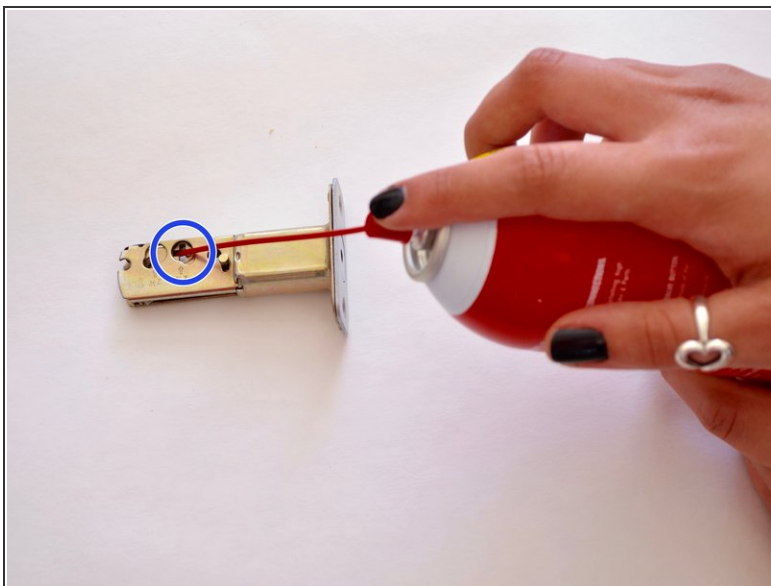
- Remove both of the 2.5 inch mounting screws from the lock cylinder.

Step 3



- After all four screws have been taken out, slide the latch of the deadbolt out of the door frame.

Step 4



- Spray GumOut parts cleaner at an angle into the latch of the deadbolt.
 - Use a rag to clean and dry off latch.
- i** We suggest using GumOut cleaning solutions, which is available at most home improvement stores.

Step 5



- Spray GumOut parts cleaner into the key cylinder to lubricate chamber.

Step 6



- Insert dry powdered graphite into the key cylinder of the deadbolt.
- Place the key into the cylinder to lubricate and clean the chamber.
- ❗ If it is difficult to turn the key, then apply more dry powdered graphite into the cylinder.

Step 7



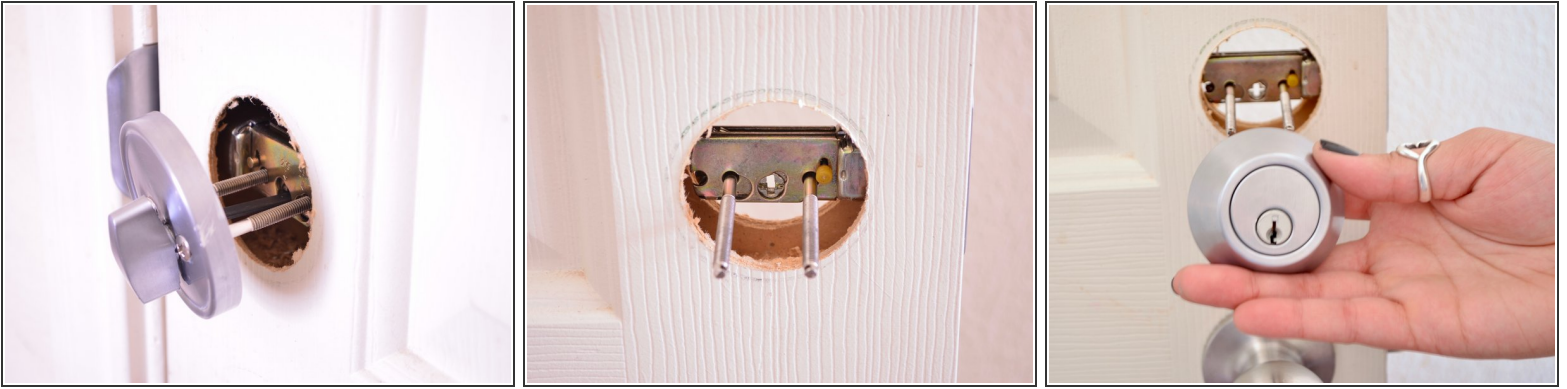
- Apply the dry powdered graphite to the latch of the deadbolt.
- Use a rag to remove excess dry powdered graphite from the latch.

Step 8



- Slide the latch of the deadbolt back into the door frame.

Step 9



- Take the lock cylinder and the 2.5 inch mounting screws and insert them through the latch of the deadbolt.
- Then mount the key cylinder on the screws.
- Use a Phillips screwdriver to tighten the 2.5 inch mounting screws and secure the deadbolt to the frame.

☑ The cylinder should be mounted on the outside of the doorframe.

Step 10



- Use a Phillips screwdriver to screw in both of the $\frac{3}{4}$ -inch screws back into the strike plate.

After following this fast fix guide, the sticking deadbolt should be fixed.