



# Toshiba Satellite Click 2 Pro Battery Replacement

The battery stores the charge from your charger which allows you to take your device anywhere. If your computer isn't holding a charge or doesn't turn on when the charger is not plugged in, replacing the battery may solve these issues

Written By: Paul DeOrsey



---

## INTRODUCTION

This guide is to help you remove a unresponsive battery or one that does not charge. In the case of a non-working battery it is recommended to replace the damaged one. Tools will be required for the removal of the battery.



### TOOLS:

- [iFixit Opening Tools](#) (1)
  - [Tweezers](#) (1)
  - [Phillips #0 Screwdriver](#) (1)
-

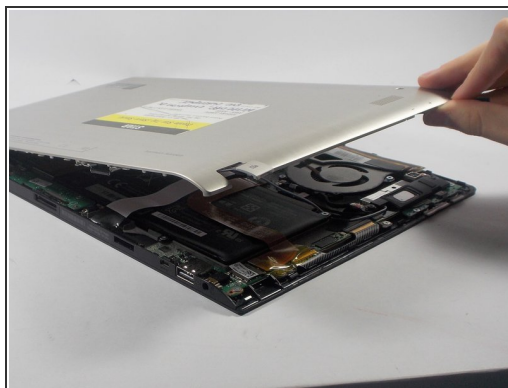
## Step 1 — Battery



**!** Working on your device while it is turned on may result in electric shock. Make sure to shut down and unplug your device before you begin.

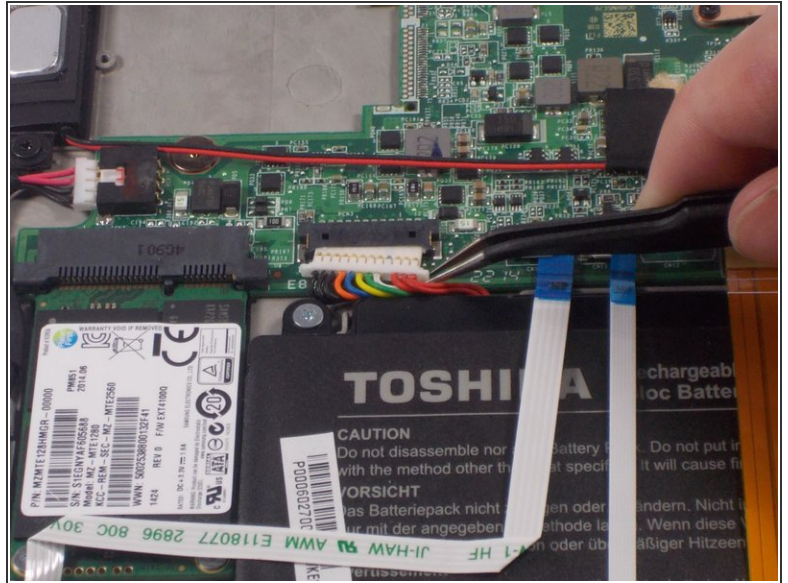
- Push down on the tablet sides until you feel a click, then pull up.
- i** This will separate the tablet from the detachable base, make sure to hold down the keyboard for easier detachment.

## Step 2



- Remove the base of the tablet from the screen using a plastic opening tool.
- i** Make sure to separate the base evenly on both sides when removing it from the screen.

## Step 3



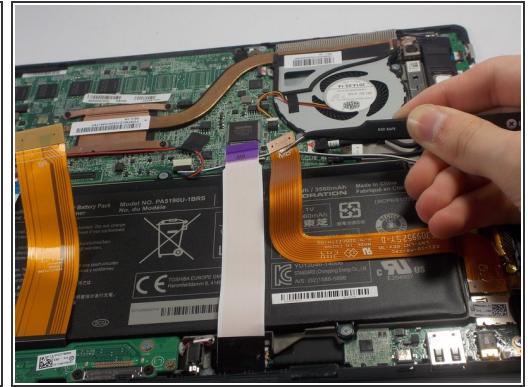
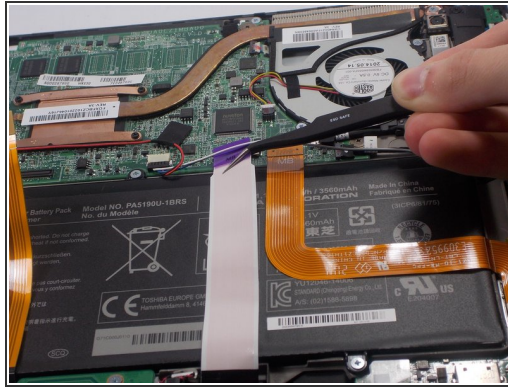
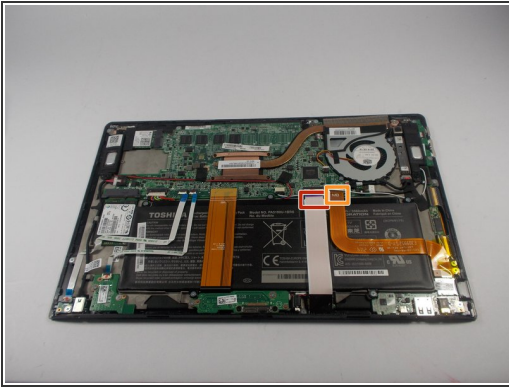
- Remove the battery power connector using ESD safe tweezers.

## Step 4



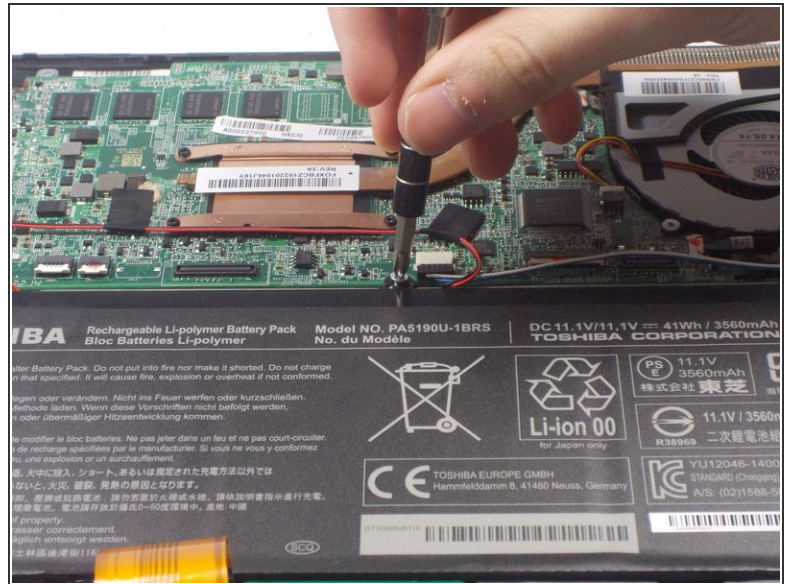
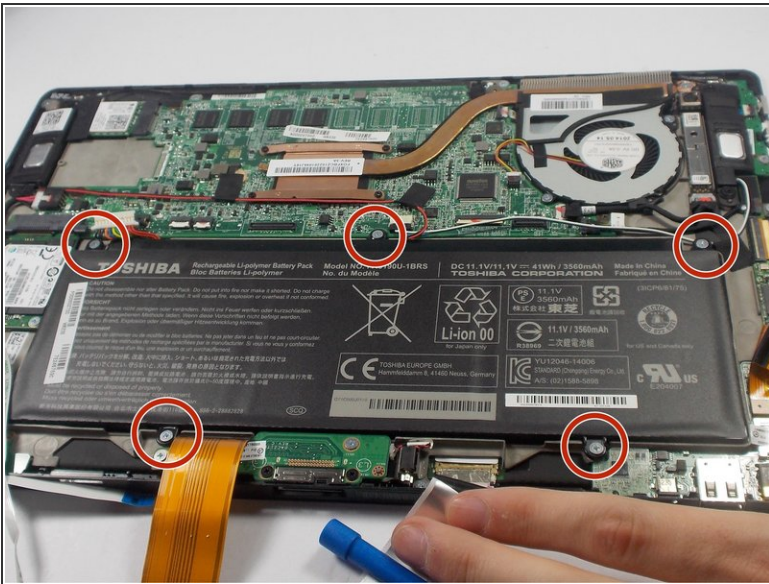
- Remove the LED ribbon cable using ESD safe tweezers.
- Remove the SIM card ribbon cable using ESD safe tweezers.
- Remove the Docking connector ribbon cable using plastic opening tool.
- ⓘ The ribbons may be stuck to the battery so make sure to peel off gently to prevent damage.
- ⚠ Make sure to flip up the white connector attached to the LED and Sim Card ribbons before removing them .

## Step 5



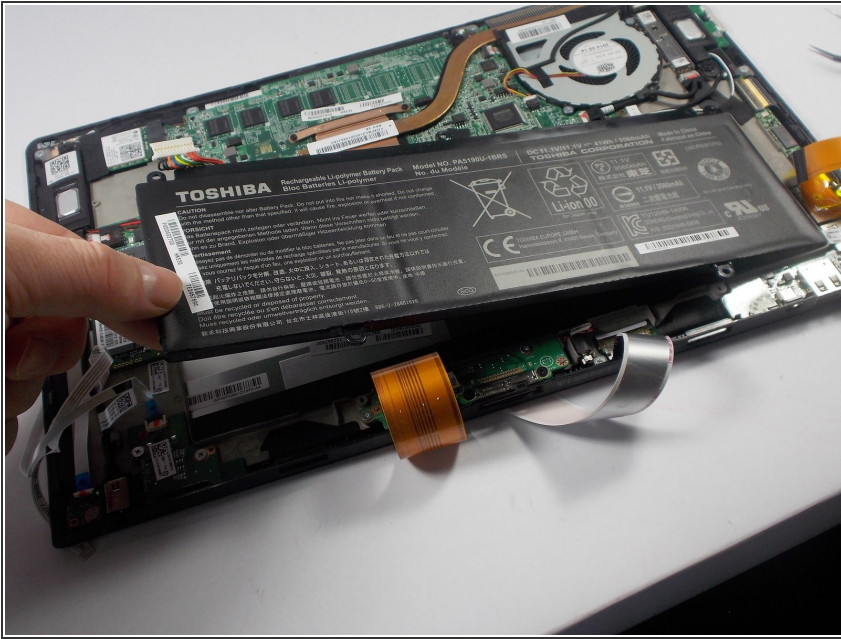
- Remove the LCD Display ribbon cable using a plastic opening tool.
- Remove the I/O ribbon cable using a plastic opening tool.
- ⓘ The ribbons may be stuck to the battery so make sure to peel them off gently to prevent damage.

## Step 6



- Remove five 3.5mm Phillips J0 screws using a Phillips screw driver.

## Step 7



- Remove the battery from its holding position.

To reassemble your device, follow these instructions in reverse order.