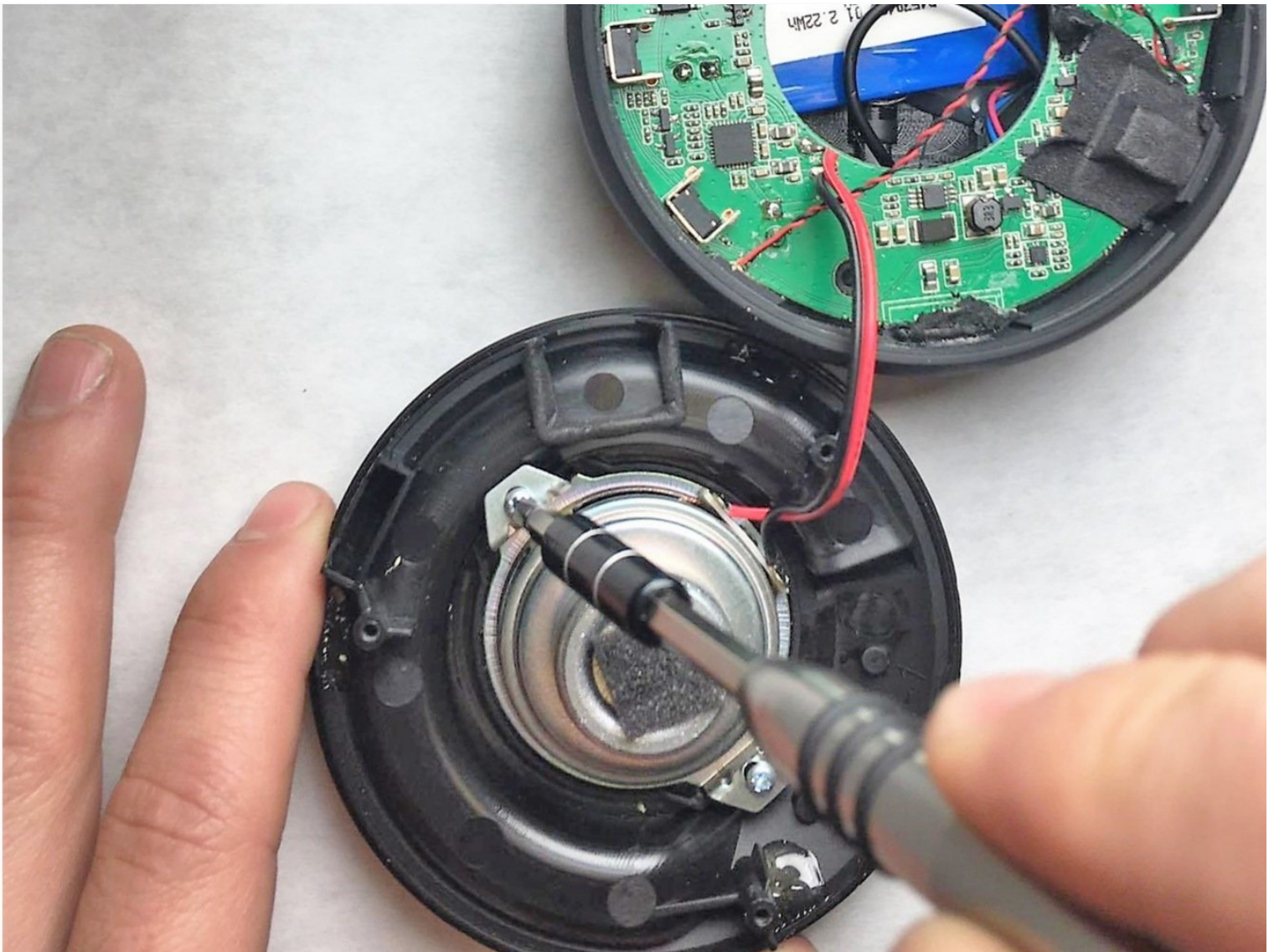




JBL Clip Plus Speaker Replacement

The speaker is the main part of the JBL Clip+....

Written By: Noah Pauk



INTRODUCTION

The speaker is the main part of the JBL Clip+. This guide will show how to remove this.

TOOLS:

[Solder and Desolder Kit](#) (1)

[Tweezers](#) (1)

Angled Tweezers

[iFixit Opening Tool](#) (1)

[Phillips #2 Screwdriver](#) (1)

Step 1 — Battery



- Use the angled tweezers to carefully pull the rubber bumper off the back side of the device

Step 2



- There will be three 6mm philips head screws under that rubber bumper, remove these three screws.

Step 3



- The back cover should lift open easily and the components should be visible.

Step 4



- The battery is adhered to the back cover of the JBL Clip Plus, slowly lift the battery away from the case, using a spudger to pry the battery away from the adhesive.

Step 5



- Remove the three 7mm philips head screws on the outer edges of the device.

Step 6



- Use the plastic prying tool to gently remove the face of the speaker from the body.

Step 7



- Use the spudger tool to gently scrape away the adhesive holding in the microphone.

⚠ When working with electronics, it's important to choose a tool that's ESD-safe to avoid accidental damage to the device. The regular black nylon spudger or a plastic opening tool should be used whenever possible.

Step 8



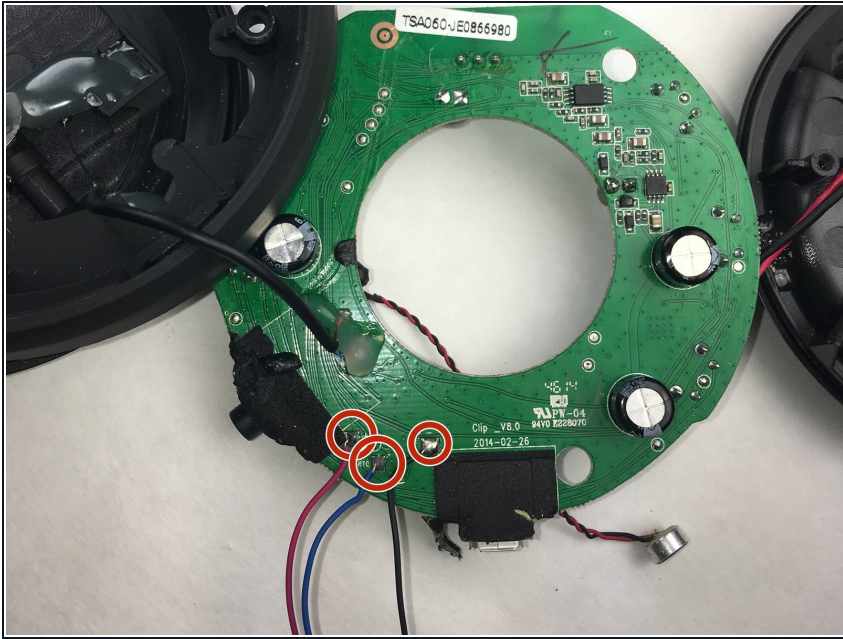
- Gently push the motherboard away from the microphone, this will allow you to remove the microphone.

Step 9



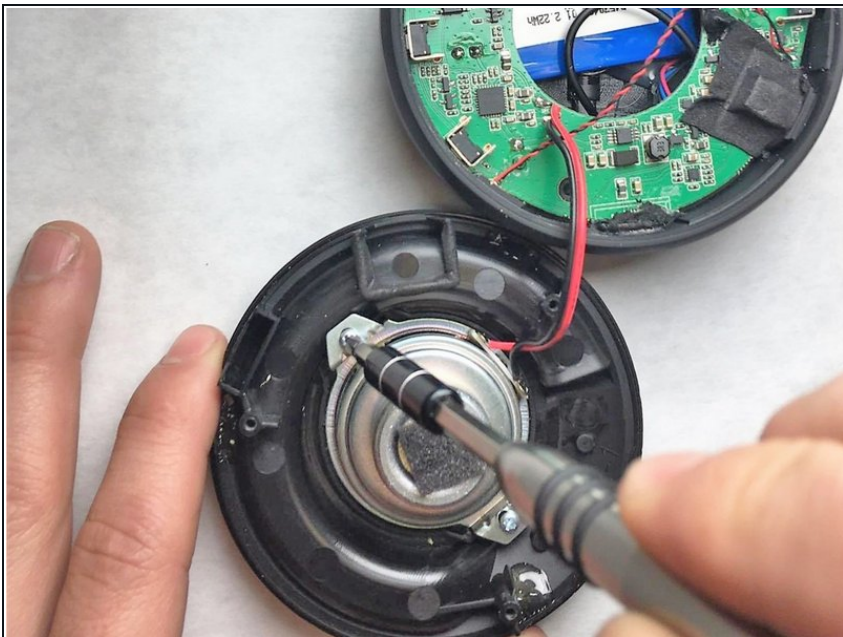
- Gently push the motherboard out from the frame of the JBL Clip Plus, this requires some force.

Step 10



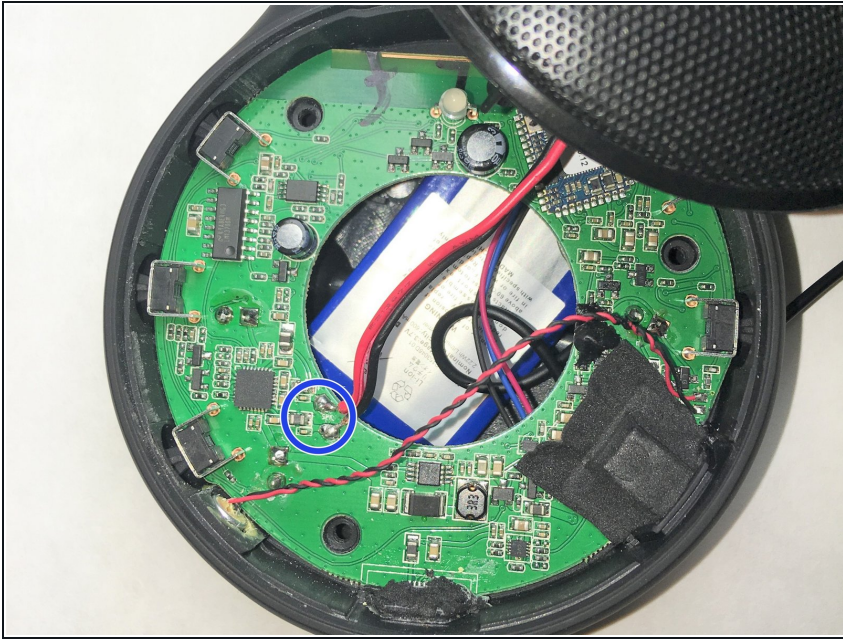
- There are three solder points that need to be desoldered.
- If you need help with desoldering refer to [How to Solder and Desolder Connections](#) help. After these are removed the battery should be free.

Step 11 — Speaker



- There are two #1 philips head 4mm screw fastening the speaker to the body, remove these.

Step 12



- Remove the solder on the motherboard.
- If you are unsure how to desolder these connections refer to : [How To Solder and Desolder Connections](#)

To reassemble your device, follow these instructions in reverse order.