



# Canon Vixia HF R600 Power Button Replacement

If the power button is unresponsive or stuck,...

Written By: Brian Luna



# INTRODUCTION

If the power button is unresponsive or stuck, it may need to be cleaned or replaced. This guide will help you remove the button from the camera body.

---

## TOOLS:

Phillips #00 Screwdriver (1)

Tweezers (1)

---

### Step 1 — Handstrap



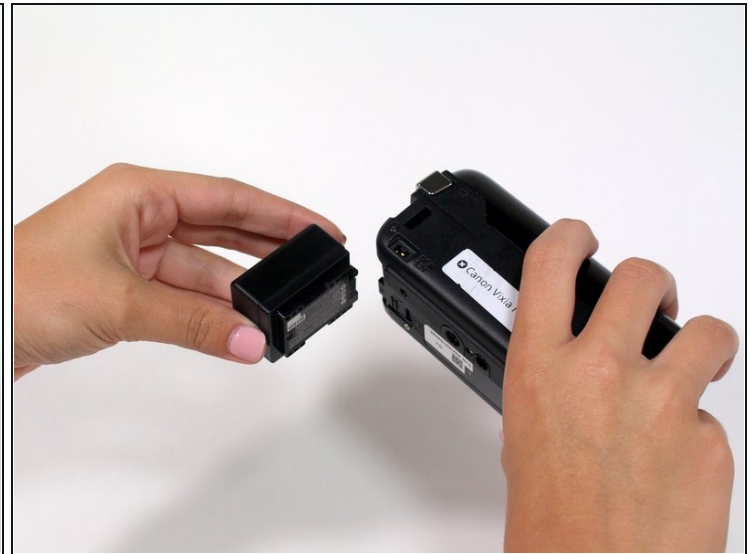
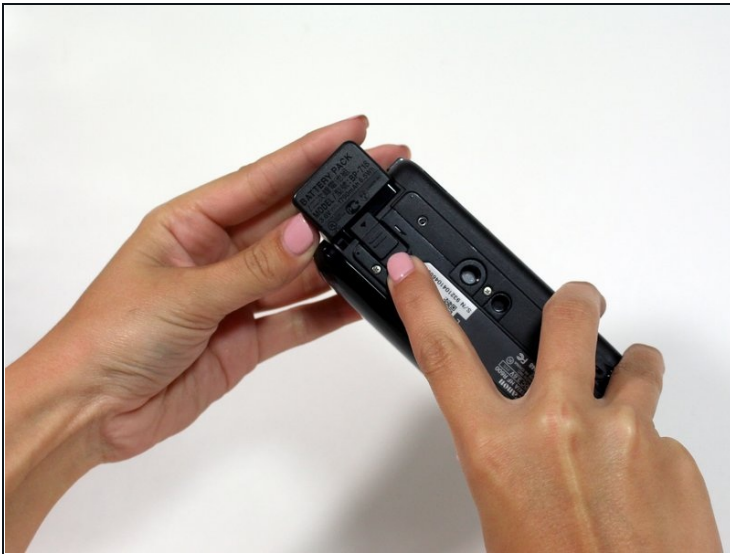
- Pull up the Velcro strap starting from the front of the camera and working your way towards the back.
- ① If you are adjusting the hand-strap, tighten or loosen the Velcro strap accordingly and reattach it.
- To remove the hand-strap, pull the Velcro strip through the leather pad.

## Step 2



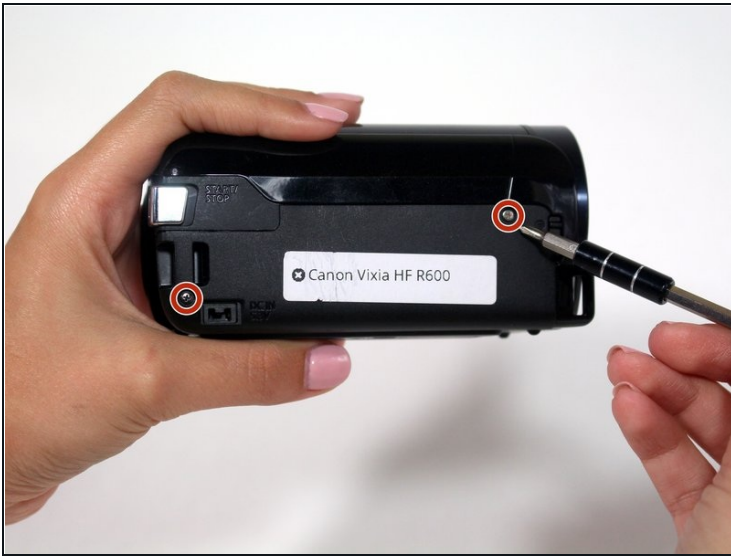
- Remove the strap from the camera body.

## Step 3 — Battery



- Press in the battery release tab located on the bottom of the camera.
- Slide the battery out from the body.

## Step 4 — Casing



- Start by removing the two 6mm Phillips #00 screws located on the right side of the camera.
- Remove four more 6mm Phillips #00 screws found on the bottom of the camera.

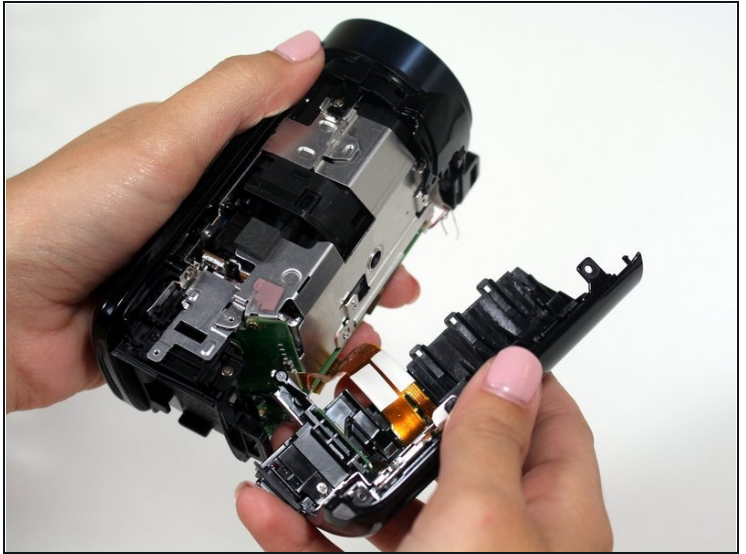
## Step 5



- Open the display screen and remove the three 5mm Phillips #00 screws.
- Look to the swivel point for the screen to find the last two 5mm Phillips #00 screws that must be removed.

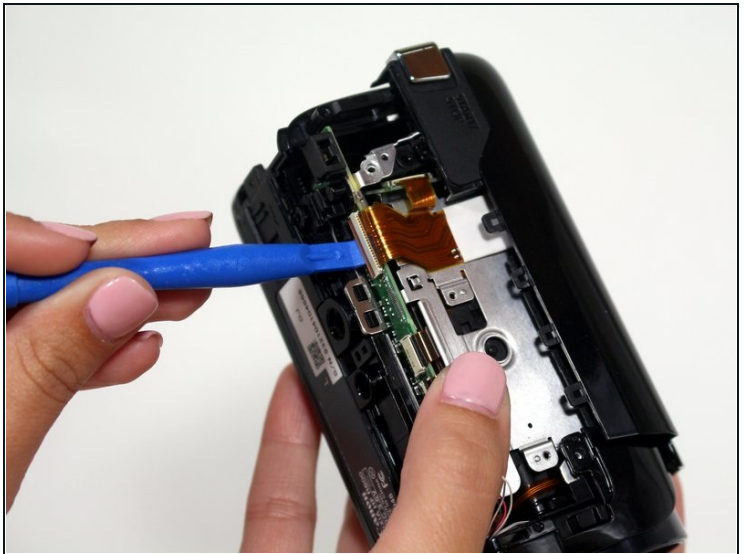
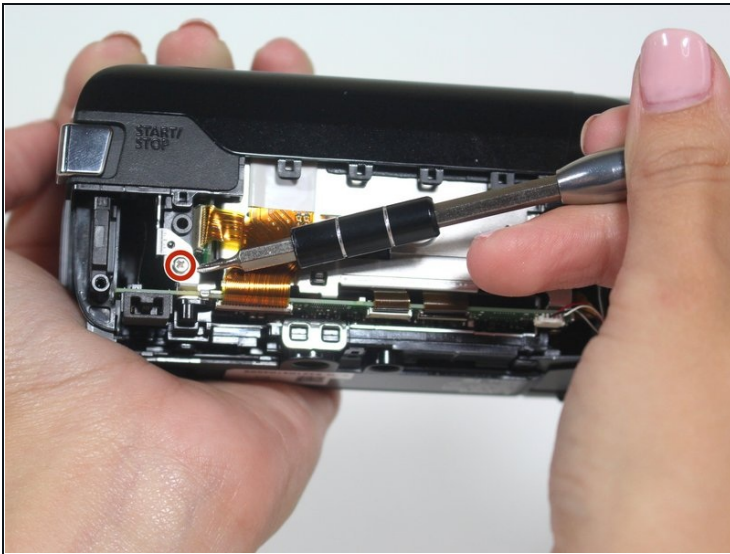


## Step 6



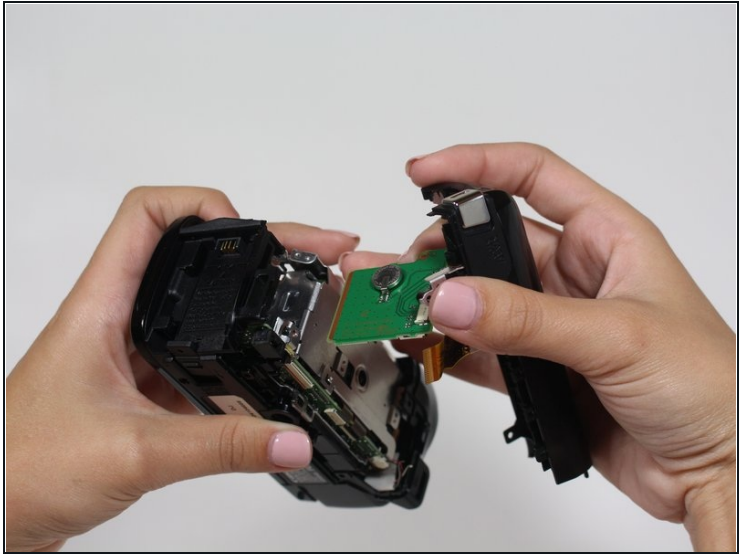
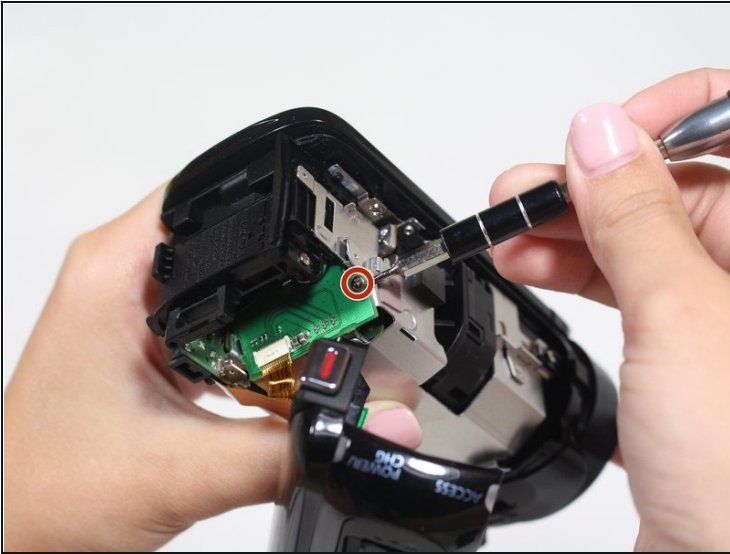
- Gently pull the plastic casing away from the camera.

## Step 7 — Speaker



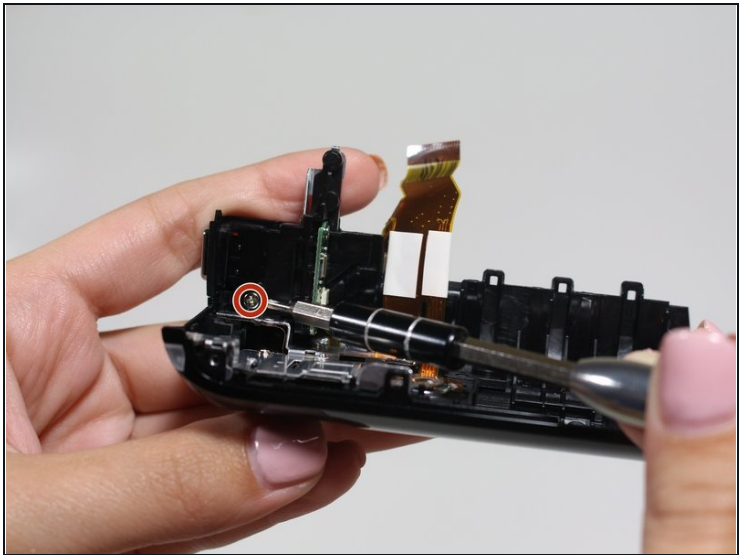
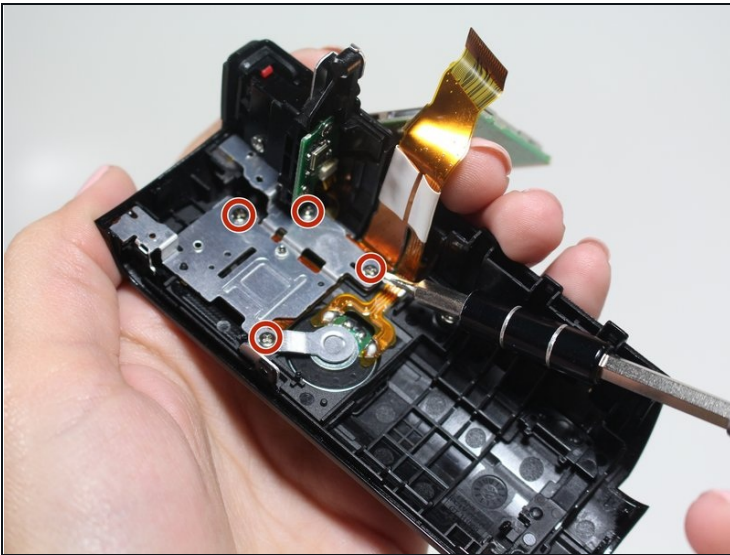
- Remove one 4mm Phillips JIS#00 screw on the right side of the camera.
- Use the plastic opening tool to undo the bronze ribbon connector.

## Step 8



- Remove one 4mm Phillips JIS#00 screw located on the top of the camera near the battery connection.
- Pull the plastic casing away from the camera. The speaker and power button are housed in this casing.

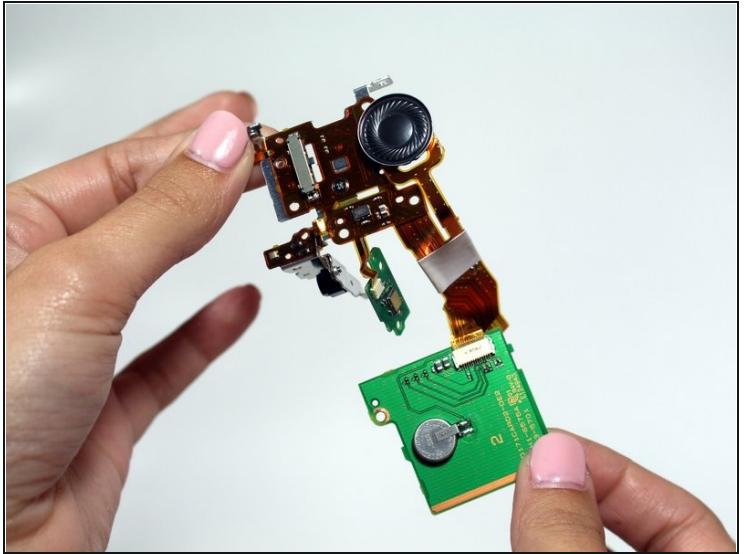
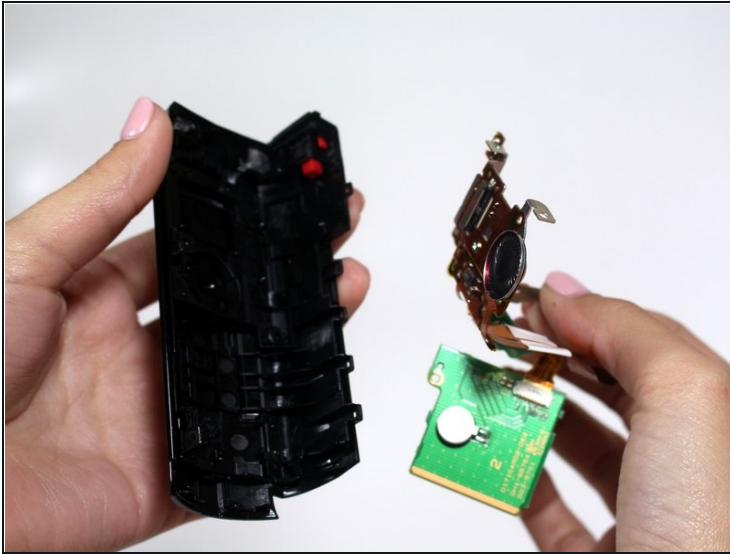
## Step 9



- Remove four 5mm Phillips PH#00 screws holding the speaker bracket in place.
- Remove one more 5mm screw below the power button.

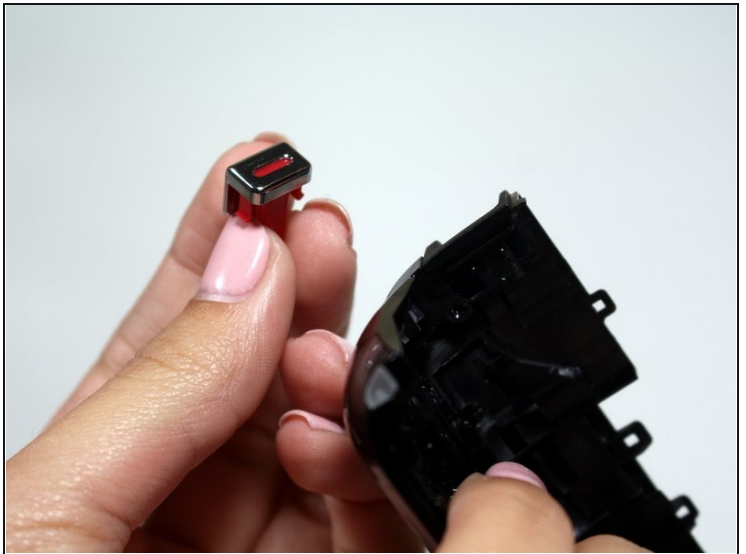
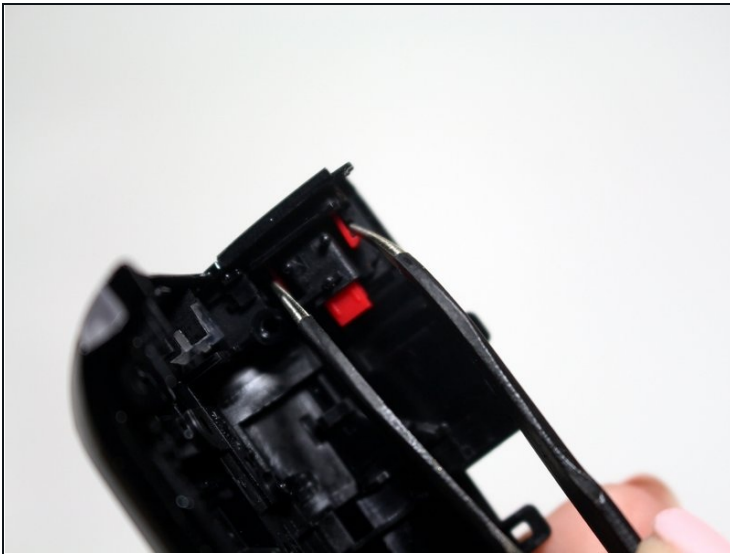


## Step 10



- Carefully pull the speaker out of the casing.

## Step 11 — Power Button



- Using a pair of [tweezers](#), gently push in the red tabs of the power button.
- Pull the power button out of the camera casing.

---

To reassemble your device, follow these instructions in reverse order.