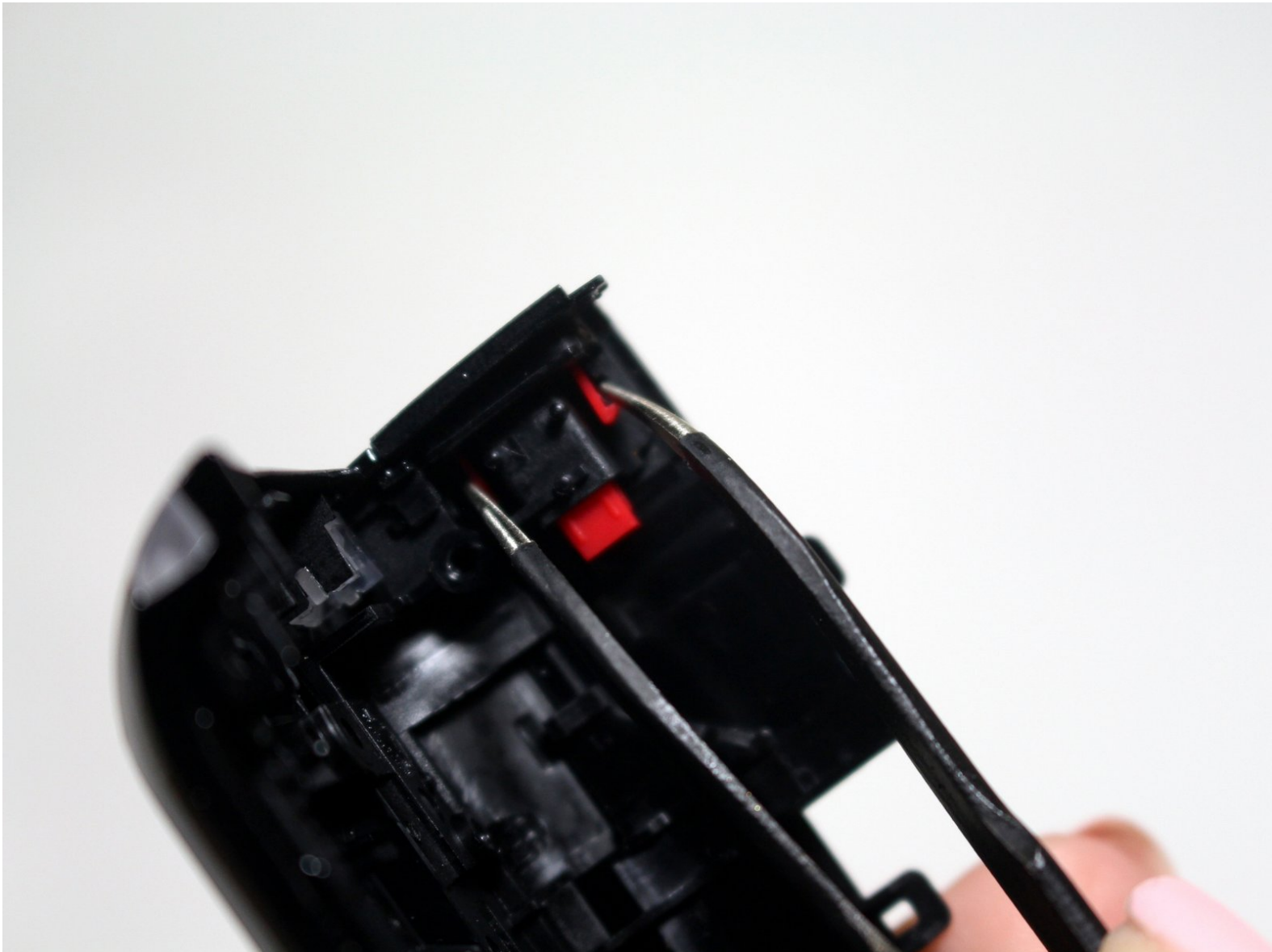




Canon Vixia HF R600 Power Button Replacement

This guide will help you replace the power button on the Canon Vixia HF R600.

Written By: Brian Luna



INTRODUCTION

If the power button is unresponsive or stuck, it may need to be cleaned or replaced. This guide will help you remove the button from the camera body.

TOOLS:

- [Phillips #00 Screwdriver](#) (1)
 - [Tweezers](#) (1)
-

Step 1 — Handstrap



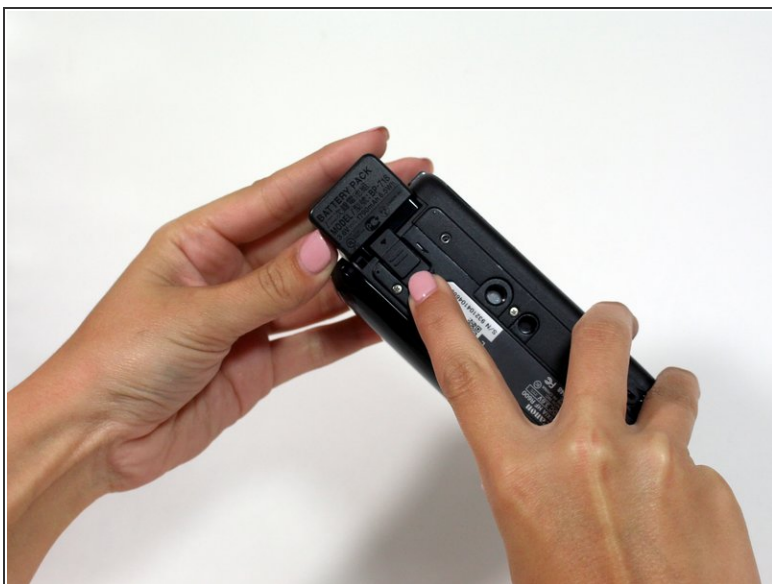
- Pull up the Velcro strap starting from the front of the camera and working your way towards the back.
- ⓘ If you are adjusting the hand-strap, tighten or loosen the Velcro strap accordingly and reattach it.
- To remove the hand-strap, pull the Velcro strip through the leather pad.

Step 2



- Remove the strap from the camera body.

Step 3 — Battery



- Press in the battery release tab located on the bottom of the camera.
- Slide the battery out from the body.

Step 4 — Casing



- Start by removing the two 6mm Phillips #00 screws located on the right side of the camera.
- Remove four more 6mm Phillips #00 screws found on the bottom of the camera.

Step 5



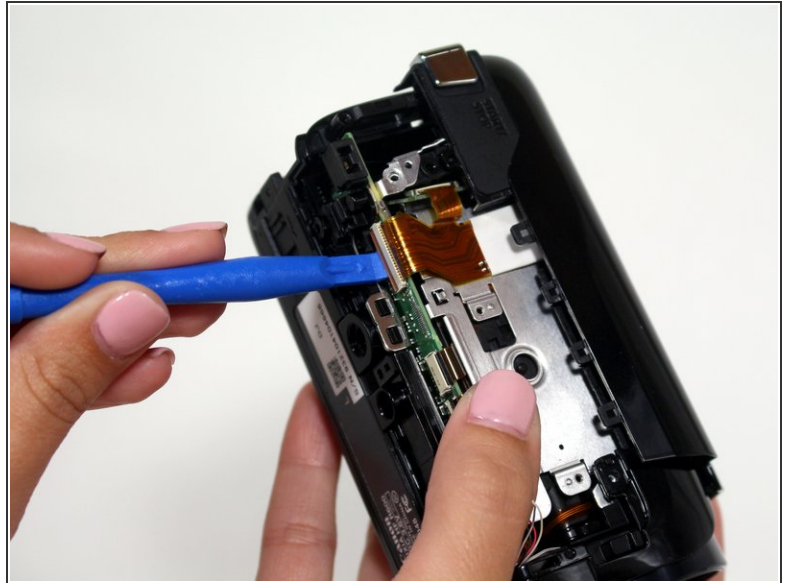
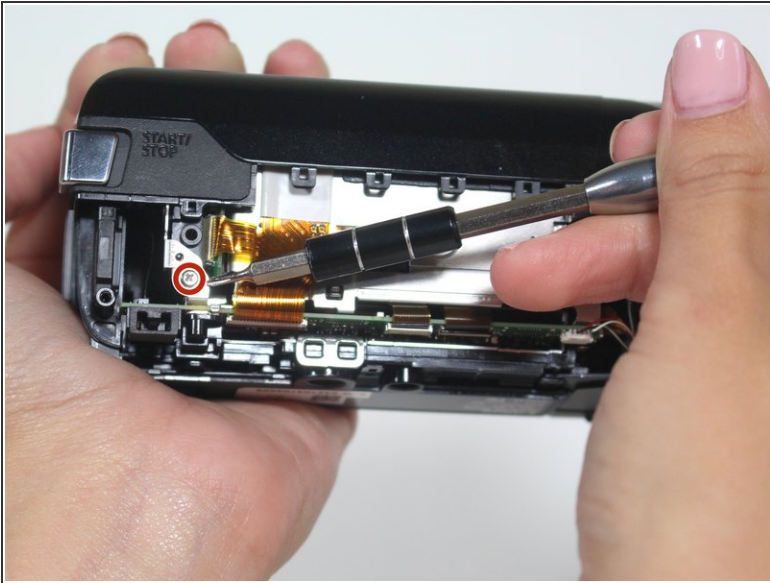
- Open the display screen and remove the three 5mm Phillips #00 screws.
- Look to the swivel point for the screen to find the last two 5mm Phillips #00 screws that must be removed.

Step 6



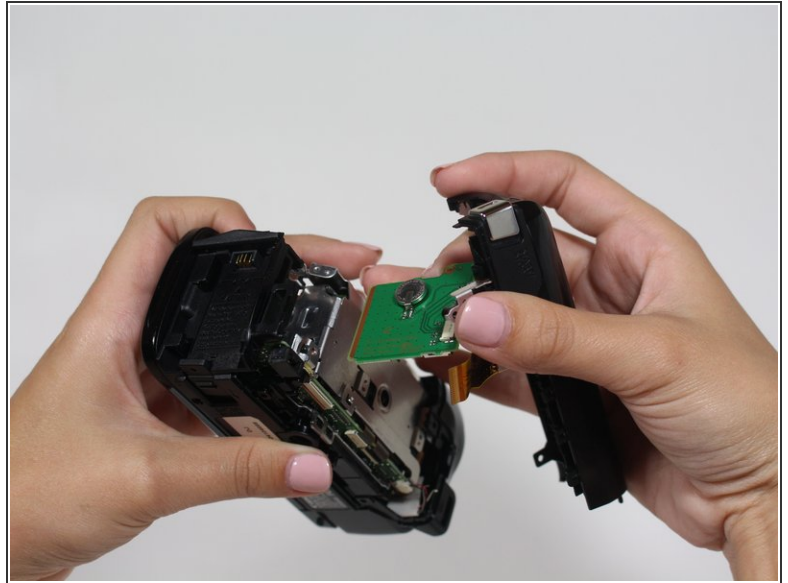
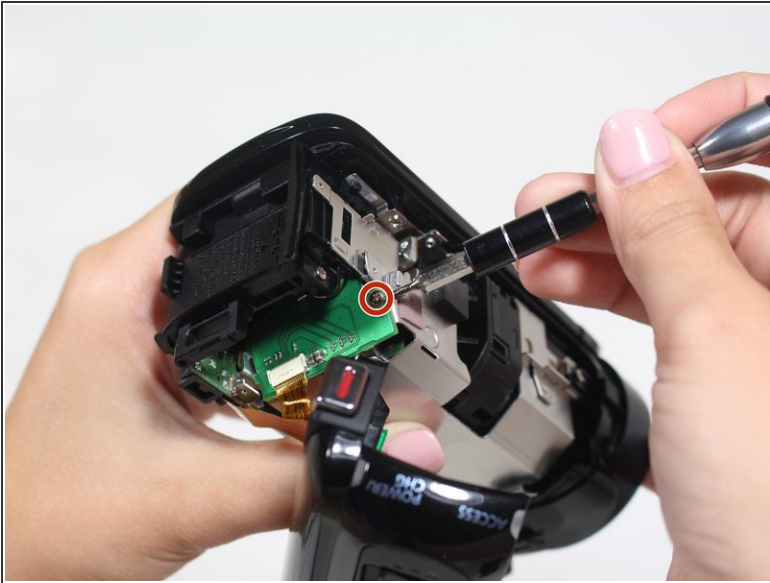
- Gently pull the plastic casing away from the camera.

Step 7 — Speaker



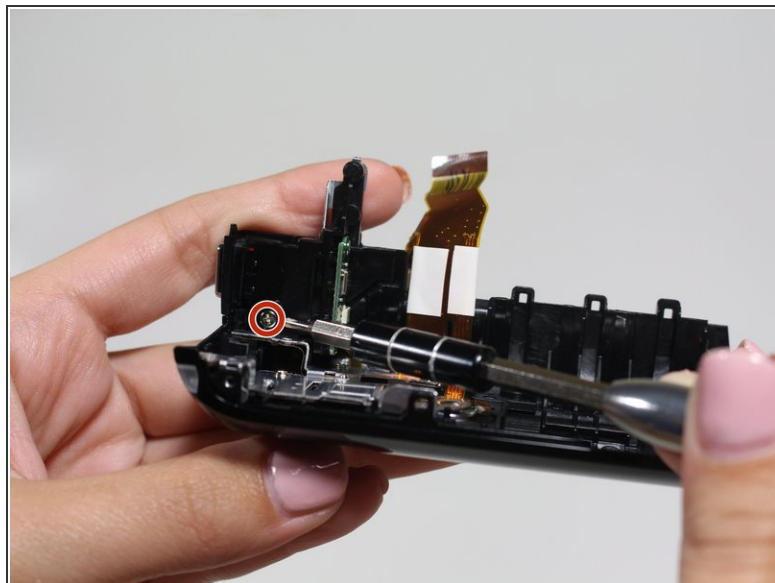
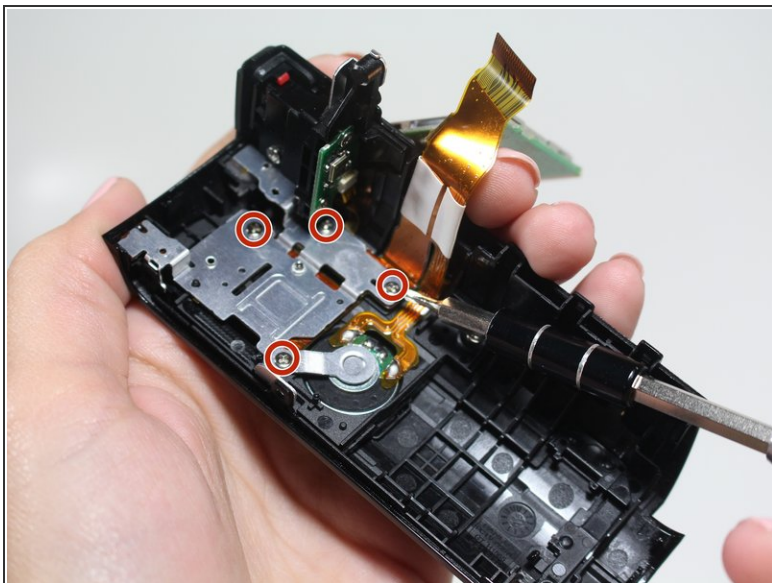
- Remove one 4mm Phillips JIS#00 screw on the right side of the camera.
- Use the plastic opening tool to undo the bronze ribbon connector.

Step 8



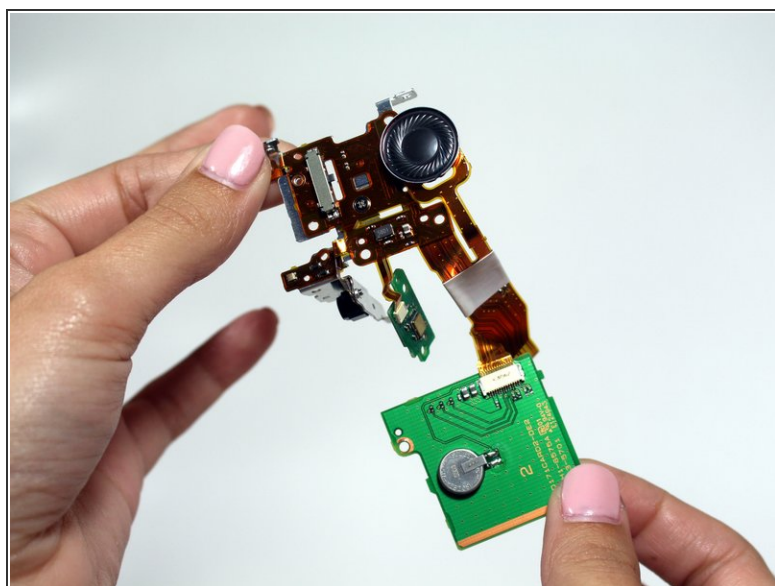
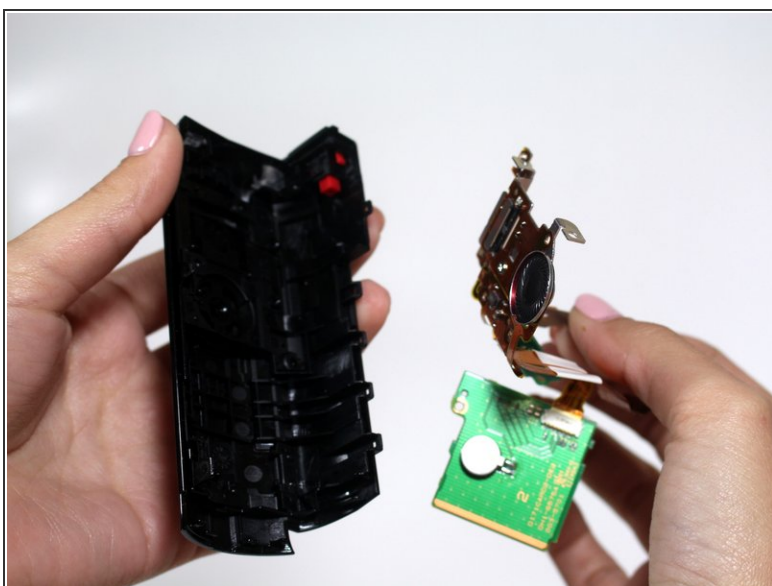
- Remove one 4mm Phillips JIS#00 screw located on the top of the camera near the battery connection.
- Pull the plastic casing away from the camera. The speaker and power button are housed in this casing.

Step 9



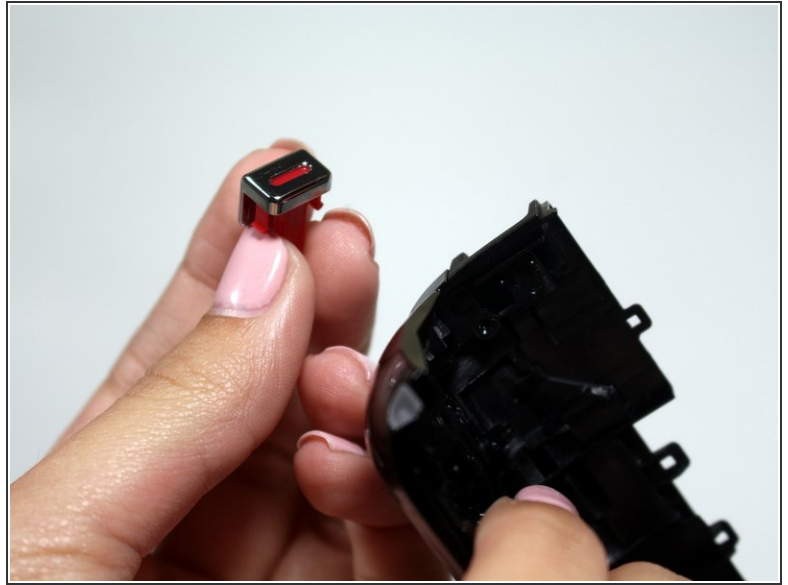
- Remove four 5mm Phillips PH#00 screws holding the speaker bracket in place.
- Remove one more 5mm screw below the power button.

Step 10



- Carefully pull the speaker out of the casing.

Step 11 — Power Button



- Using a pair of tweezers, gently push in the red tabs of the power button.
- Pull the power button out of the camera casing.

To reassemble your device, follow these instructions in reverse order.