



# Nabi 2S Battery Replacement

Use this guide to replace the battery of your device.

Written By: Riana Ramirez



---

## INTRODUCTION

This guide will aid you in the process of removing the battery of the device. This is useful in replacing a broken or dis-functioning battery.

---

### TOOLS:

- [iFixit Opening Tools](#) (1)
  - [Phillips #0 Screwdriver](#) (1)
-

## Step 1 — Nabi 2S Disassembly



- Remove the red rubber case from the device.

## Step 2



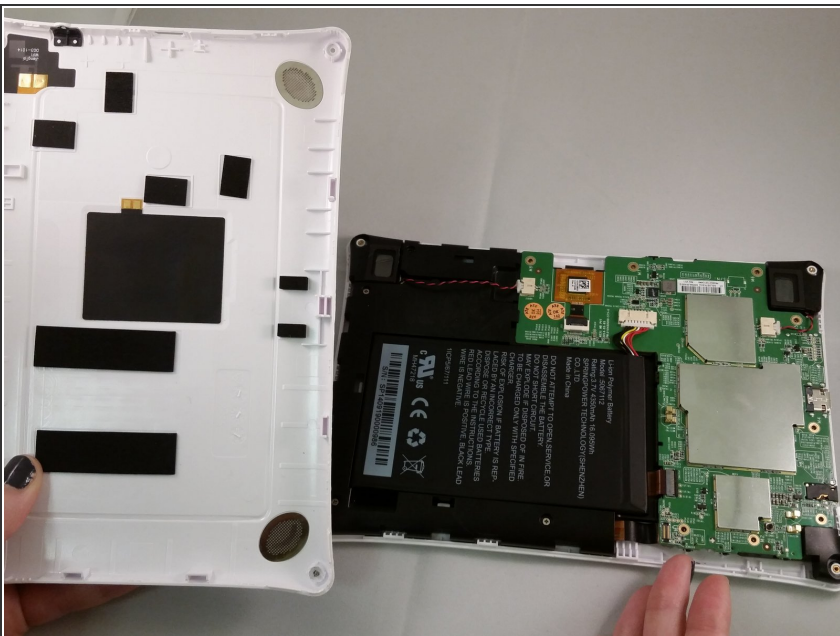
- Make sure the screen is facing away from you and the back cover is facing you.
- Using a Phillips #0 Screwdriver, unscrew the 3mm screws counter-clockwise in each corner of the plastic back cover. It will be a total of four screws. The smaller case on the back cover is attached to the main cover so it will not need to be removed.

## Step 3



- Using the plastic opening tool, remove the case.
- ① Removing the case will take a bit of effort and force. We recommend using two hands and if possible another person to help. It will require some gusto.
- ① It is helpful to pry at the corners first to loosen the case.

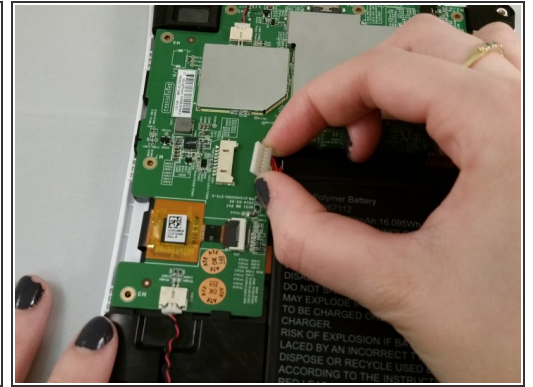
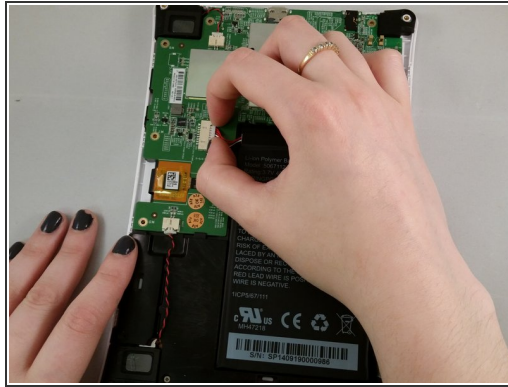
## Step 4



- After the back case is loosened, remove it from the device to change or access the battery.

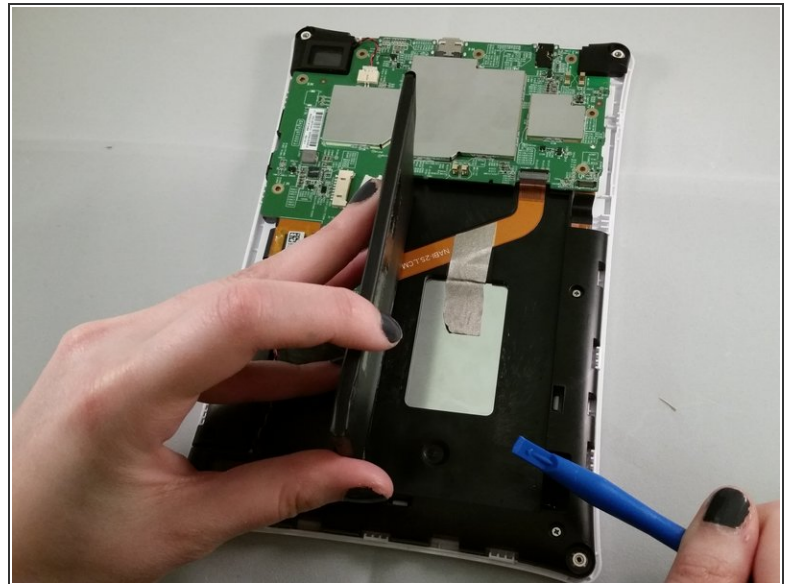


## Step 5 — Battery



- Grasp the circuit connected to the battery via wires.
- Slide the wires from the circuit to detach it.

## Step 6



- After the circuit is detached, the battery will be easily removable.
- ⓘ Don't rip the battery off of the board.
- ⚠ The battery is stuck with adhesive tape to the board.
- ⓘ Use a plastic opening tool to apply pressure to the battery and lift it up from the adhesive.

To reassemble your device, follow these instructions in reverse order.