



Asus Eee PC 1000HE Motherboard Replacement

Follow this guide if you need to replace your...

Written By: Mike Glenn



INTRODUCTION

Follow this guide if you need to replace your motherboard. This guide is also useful for removing your motherboard in order to access other parts. The hard drive is attached to both the motherboard and the outer case of the netbook, so the hard drive must be removed to separate the motherboard from the outer case.

TOOLS:

Spudger (1)

T6 Torx Screwdriver (1)

iFixit Opening Tool (1)

Tweezers (1)

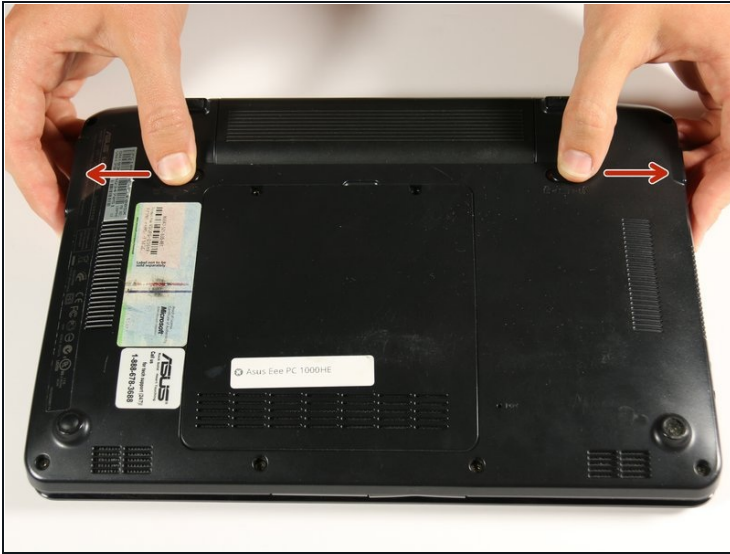
Phillips #00 Screwdriver (1)

Step 1 — Battery



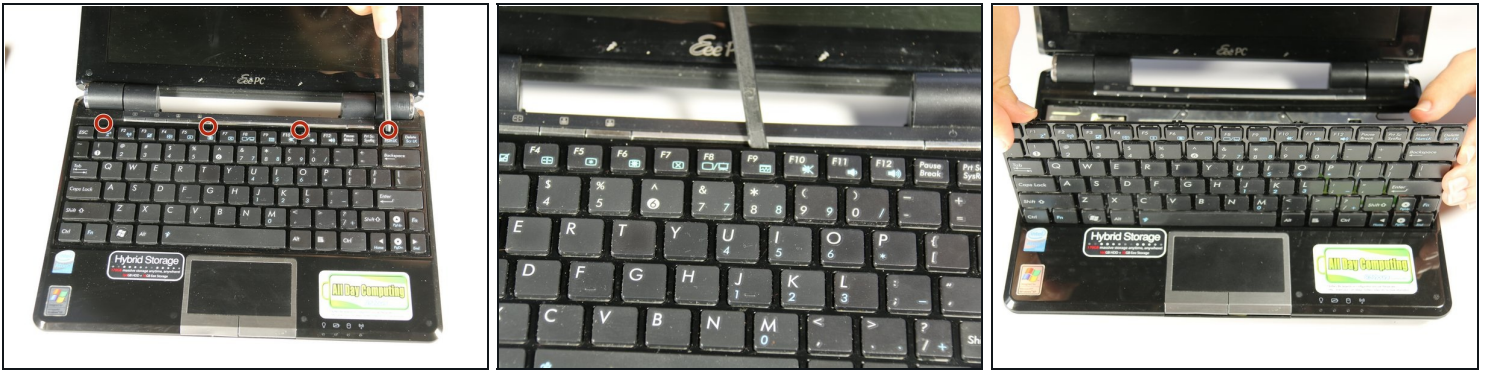
- Lay the laptop down with the bottom facing upwards.
- Locate the two battery lock slide tabs.

Step 2



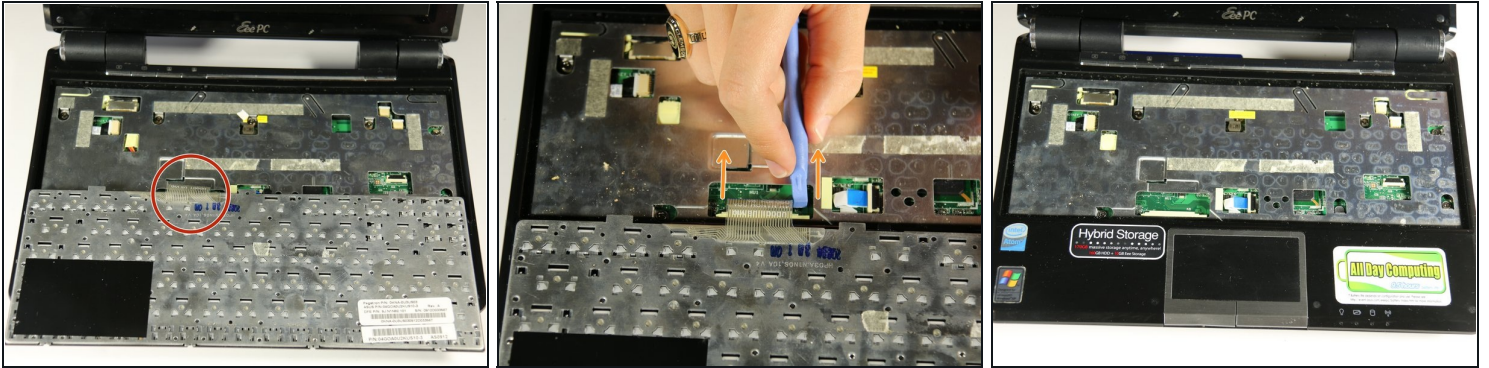
- Slide the tabs outward to unlock the battery.
- ① The right tab will remain in the unlocked position while the left tab must be held.
- While holding the left tab outward, slide the battery away from you to remove it.

Step 3 — Keyboard



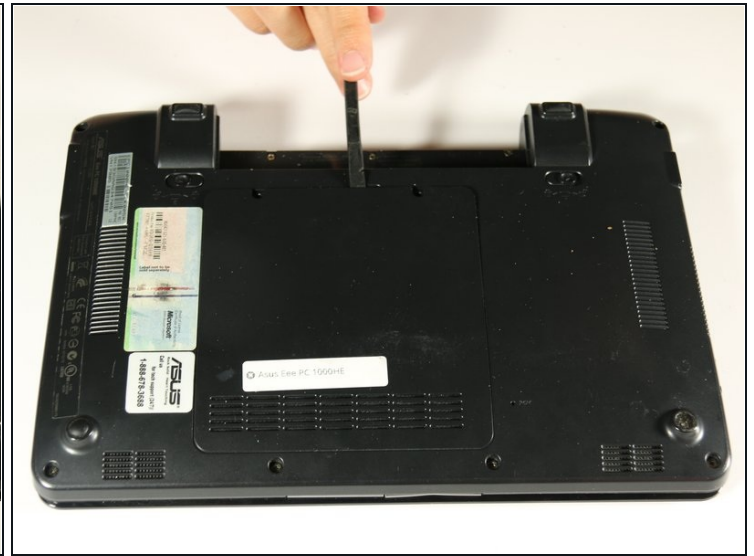
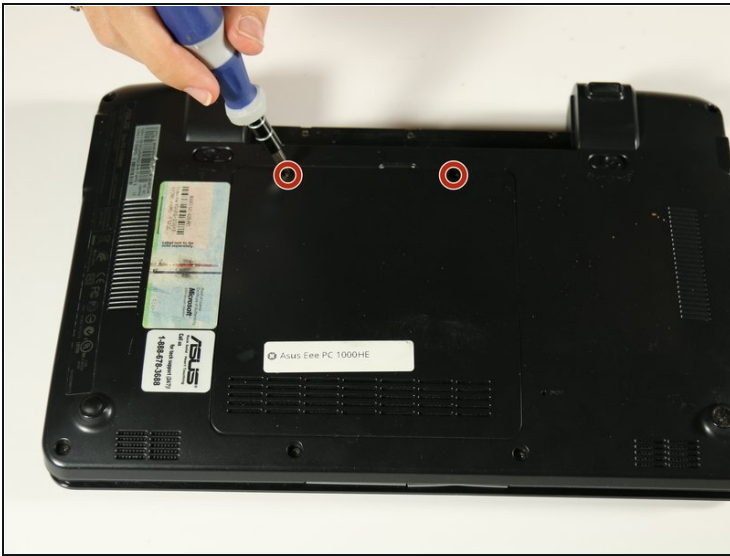
- ⚠** The keyboard will still be attached to the body of the netbook at the conclusion of this step through a ribbon cable located at the bottom edge of the keyboard. Improper removal may result in damage to your device.
- Identify the four connection points holding the top of the keyboard to the main body of the netbook. To remove the keyboard, use the spudger to unhook the keyboard upwards at these points.
 - ① The keyboard will become more disconnected as you use the spudger at each connection point.

Step 4



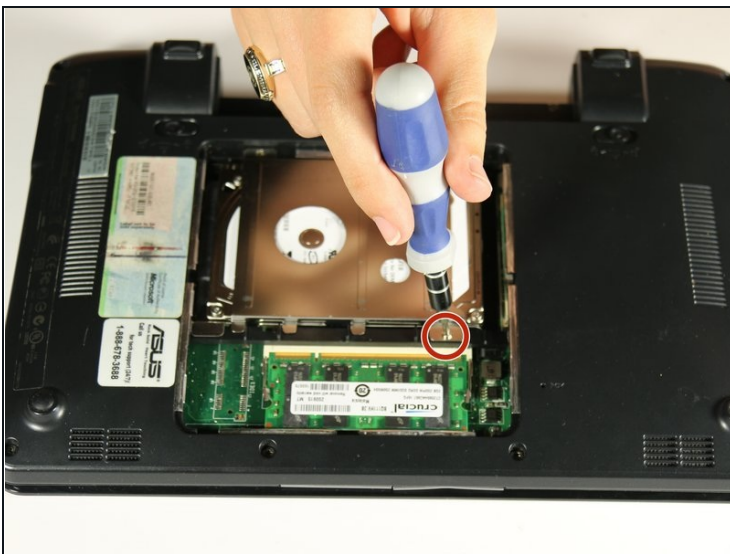
- Flip the keyboard over by pulling the top edge of the keyboard away from the netbook body, using the bottom edge as a hinge point.
- Locate the opaque strip, or ribbon cable, connecting the back of the keyboard to the hardware of the netbook.
- To disconnect the ribbon cable, use a plastic opening tool to pull each side of the black plastic strip, located below the ribbon cable, away from the ribbon cable.
- The black strip will disconnect completely from the ribbon cable. The keyboard will then be detached from the netbook's body and can be safely removed.

Step 5 — Hard Drive



- Using the Ph00 (+) Phillips screw head, unscrew the two 4 mm screws that hold the back panel in place.
- Use the spudger to gently pry off the back panel.

Step 6



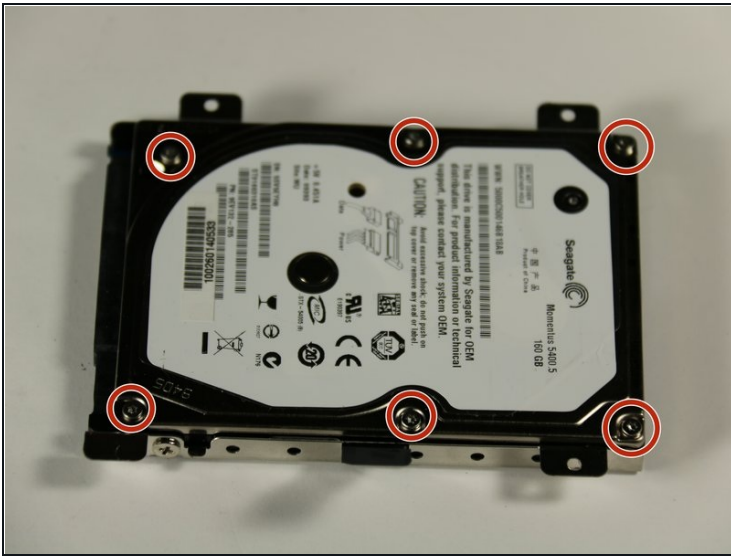
- Use the PH00 (+) screw head and screw driver to remove the 4 mm screw holding down the hard drive cover.
- ⓘ The hard drive cover is the silver plate on top of the hard drive.

Step 7



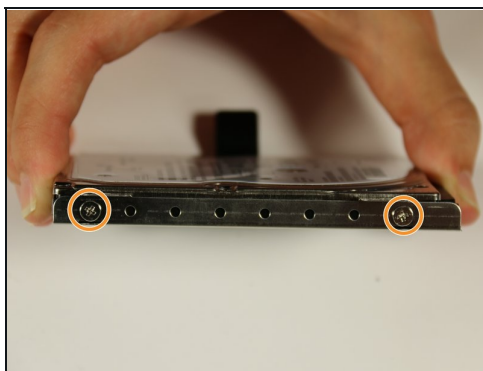
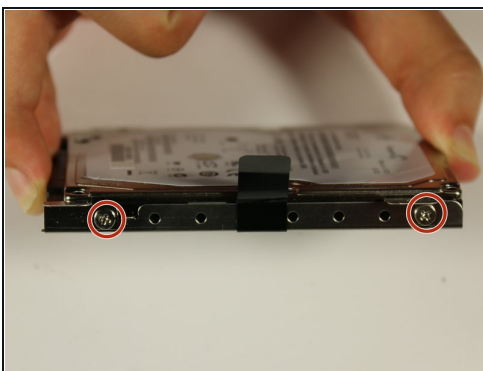
- Slide the hard drive from the left towards the right side to detach it
 - Once the hard drive is detached, lift the black tab and remove from the netbook.
- ⓘ Do not continue with the next 3 steps if you are not attempting to replace your hard drive. Proceed to the next section instead.

Step 8



- ⓘ Do not continue with this step or the next two steps if replacing the hard drive is not the goal. For all other guides, simply removing the hard drive from the PC (shown in previous steps) is the only necessary step.
- To remove the metal hard drive casing, use a T6 (star head) screwdriver head to remove six 4mm screws marked by the red circles in the picture.

Step 9



- Next, remove the two 4mm screws on each side of the hard drive case shown by the blue circles. Use the PH00 (+) Philips head and screwdriver head used in the previous step to remove these 4 mm screws.
- ⓘ There should be 4 total screws, 2 on each side.

Step 10



- Remove the hard drive from the metal casing by lifting it up.

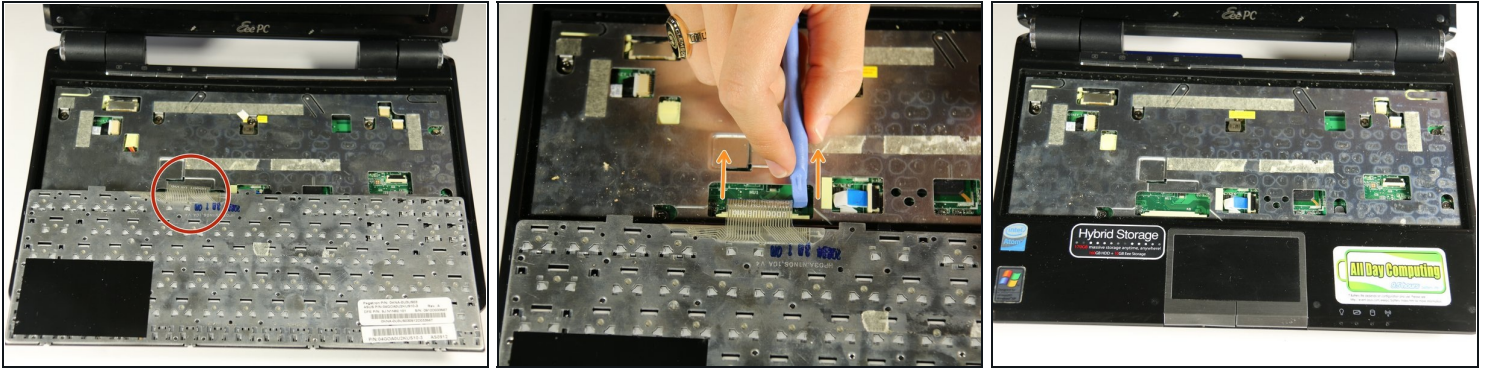
Step 11 — Keyboard



⚠ The keyboard will still be attached to the body of the netbook at the conclusion of this step through a ribbon cable located at the bottom edge of the keyboard. Improper removal may result in damage to your device.

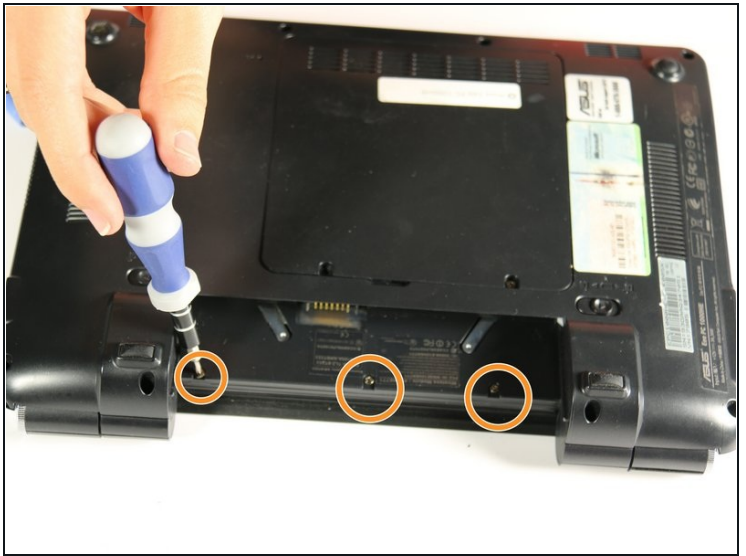
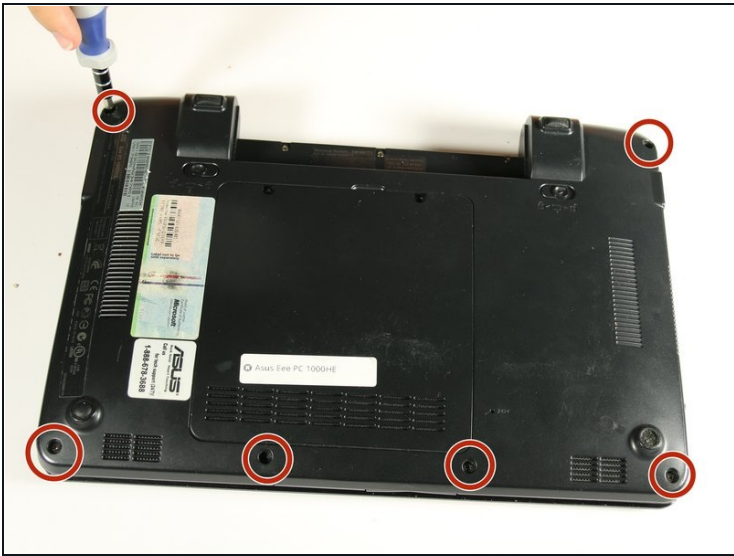
- Identify the four connection points holding the top of the keyboard to the main body of the netbook. To remove the keyboard, use the spudger to unhook the keyboard upwards at these points.
- ① The keyboard will become more disconnected as you use the spudger at each connection point.

Step 12



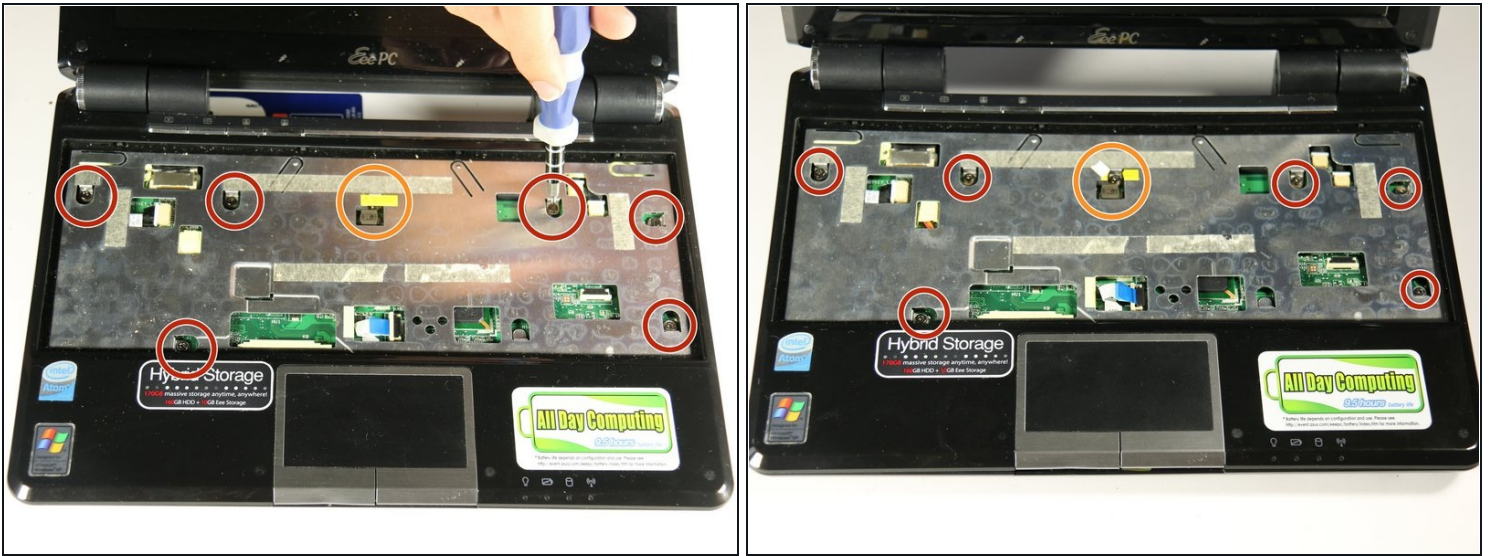
- Flip the keyboard over by pulling the top edge of the keyboard away from the netbook body, using the bottom edge as a hinge point.
- Locate the opaque strip, or ribbon cable, connecting the back of the keyboard to the hardware of the netbook.
- To disconnect the ribbon cable, use a plastic opening tool to pull each side of the black plastic strip, located below the ribbon cable, away from the ribbon cable.
- The black strip will disconnect completely from the ribbon cable. The keyboard will then be detached from the netbook's body and can be safely removed.

Step 13 — Motherboard



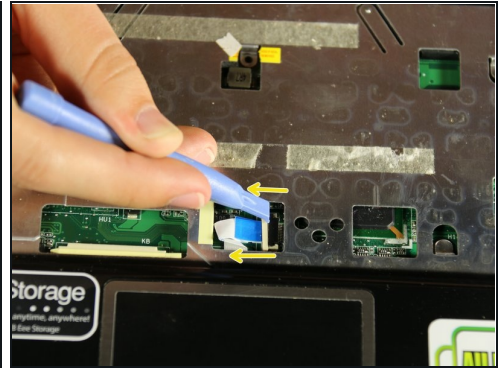
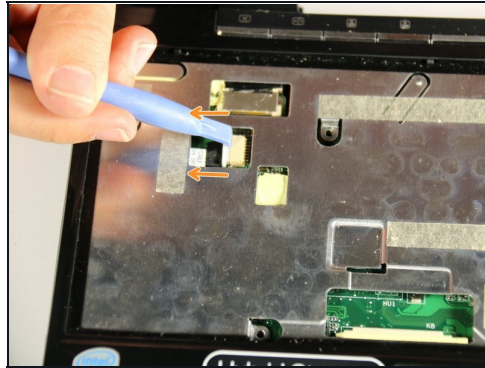
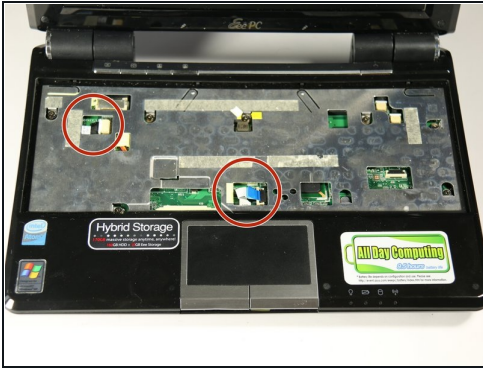
- Orient your netbook so the back panel is facing up.
- Locate the eight 7 mm screws on the edges of the back panels.
- Remove these 7 mm screws using a PH00 (+) Philips head and screwdriver.
- Orient the netbook so the battery compartment is closest to you.
- Locate the three 7 mm screws on the back panel, beneath where the battery would be located before removal.
- Remove the three 7 mm screws using a PH00 (+) Philips head and screwdriver.

Step 14



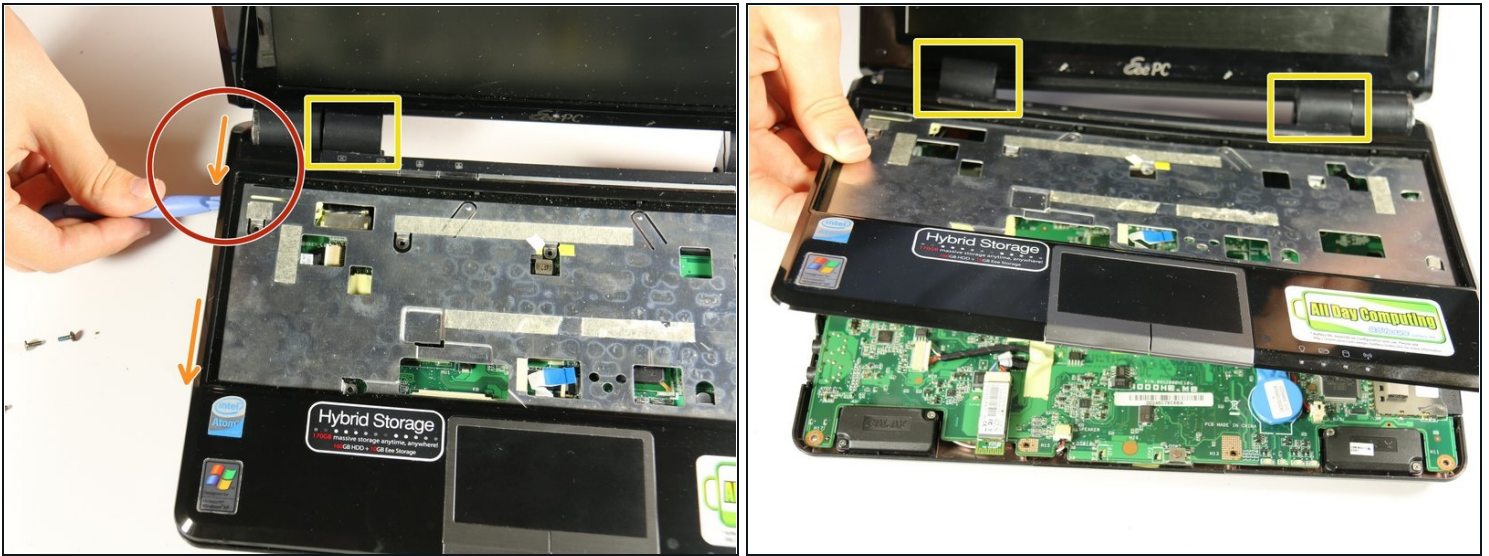
- Orient the netbook the front panel is opened and the keyboard and screen are facing you (the orientation in which you would typically use the netbook).
- ⚠ In this step, a warning sticker covers one 7 mm screw. If removed, the warranty on your netbook will be voided.
- Having already removed the keyboard, locate the six 7mm screws on the silver plate in the keyboard housing.
- Remove the six 7 mm screws using a PH00 (+) Philips head and screwdriver.
- If you choose to remove the sticker and void your netbook warranty, locate the yellow sticker and remove to reveal the seventh 7 mm screw.
- Remove the seventh 7 mm screw with a PH00 (+) Philips head and screwdriver.

Step 15



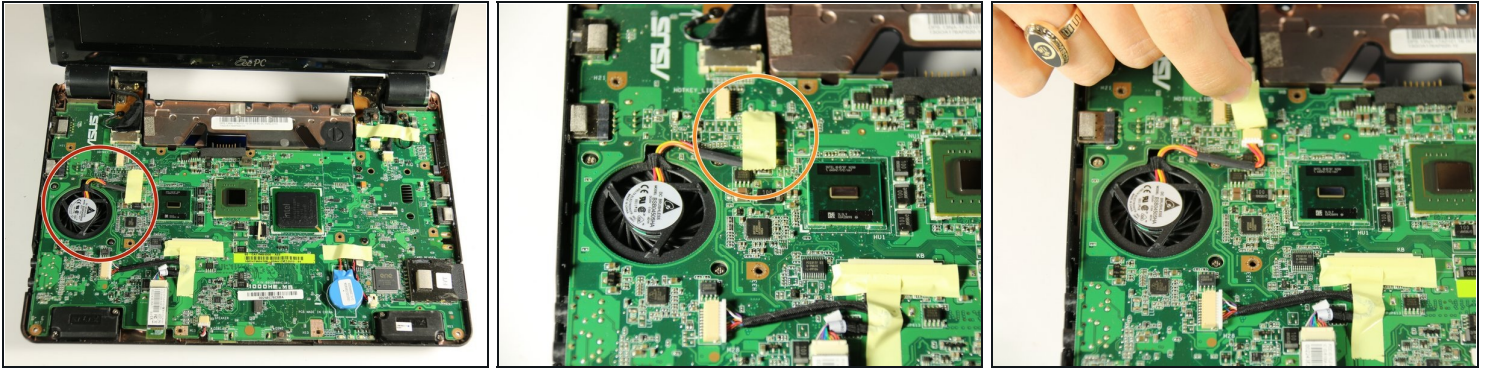
- Locate the cord connected to the motherboard on the upper left and the ribbon strip connected to the motherboard on the bottom middle of the silver keyboard housing.
 - Remove the cord, on the upper left of the keyboard housing, from the connection point using the plastic opening tool. Place the plastic opening tool on one end of the white plastic piece. Pull on the edge of the piece to remove it from the connection housing.
 - Disconnect the ribbon from the connection housing by prying both ends of the cream plastic piece away from the ribbon.
- ⓘ Once the plastic piece is removed, the ribbon will spring free, but it will still be attached to the silver plate.

Step 16



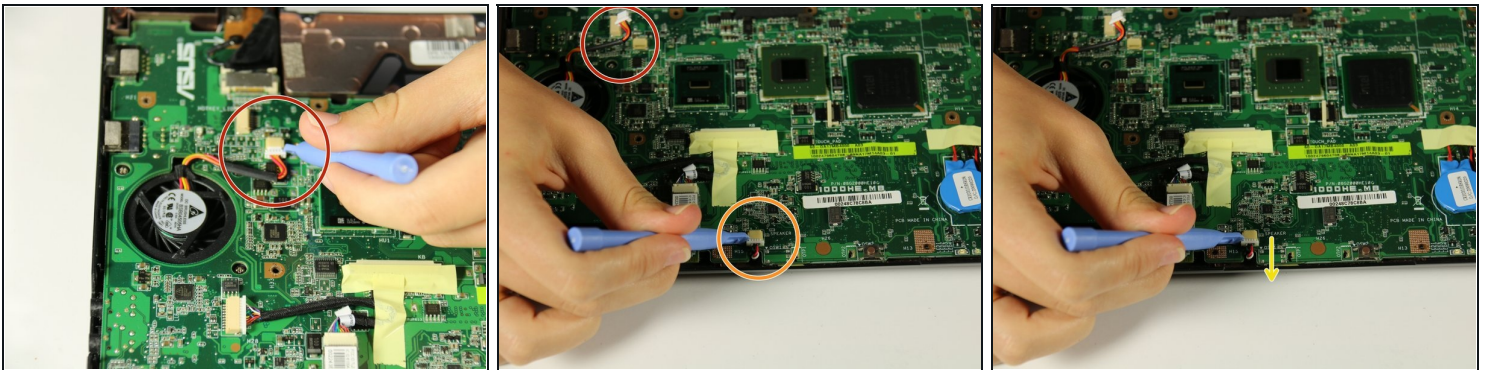
- With the ribbons detached, you can now remove the front panel of the keyboard. The silver keyboard housing and the black piece are connected and make up the front panel.
- Locate one back corner of the netbook near where the screen meets the body of the netbook.
- Wedge the plastic opening tool between the two black layers of the netbook. There is a visible line that divides the bottom and top black pieces.
- Run the plastic opening tool along the side of the netbook while lifting upwards, keeping it wedged between the two black pieces. This will loosen the connection.
- Once the two pieces are loosened enough, you can place your fingers between the two pieces and lift the top piece off. The two inner black pieces of the hinge connection, between the screen and the netbook body, are attached to the front panel that you are removing.

Step 17



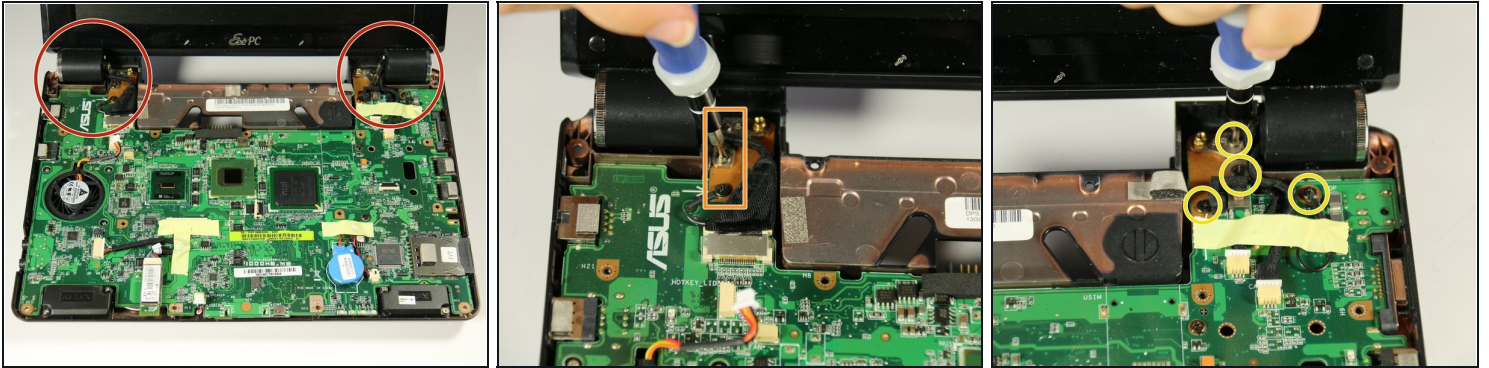
- Locate the fan on the left side of the motherboard.
- Locate the sticker next to the fan that is atop the fan connection cords.
- Peel back the sticker.

Step 18



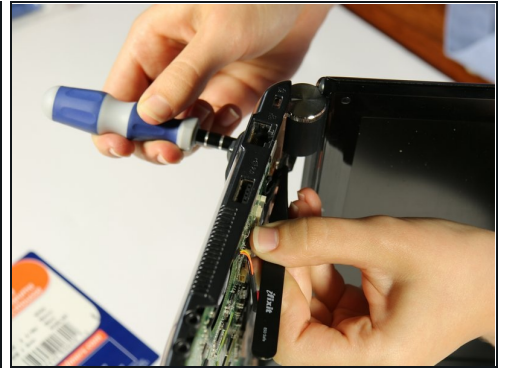
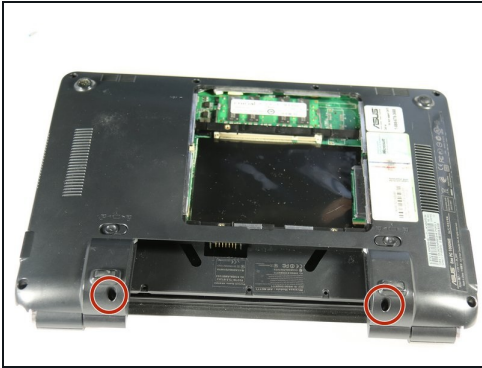
- Locate the cord connected to the motherboard that is beneath the sticker that you peeled off in the previous step.
- Use the plastic opening tool to remove the cords from the cream housing.
- Locate the cord connected to the motherboard on the lower left.
- Remove this cord using the plastic opening tool by prying the white plastic piece out from the cream housing.

Step 19



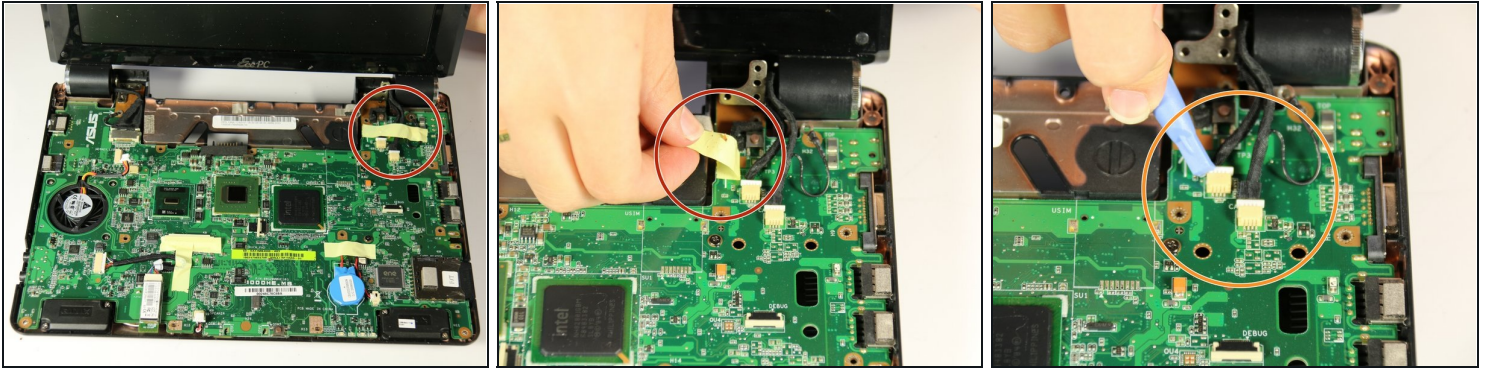
- To remove the motherboard from the netbook housing, you must detach it from the bottom black piece of the netbook.
- Locate the hinge points at the top of the netbook on each side. These pieces connect the screen to the netbook body.
- Locate three 7 mm screws to the right of the left hinge point in a vertical line.
- Remove these 7 mm screws using a PH00 (+) Philips head and screwdriver.
- Locate the four 7 mm screws to the left of the right hinge point.
- Remove these 7 mm screws using the PH00 (+) Philips head and screwdriver.

Step 20



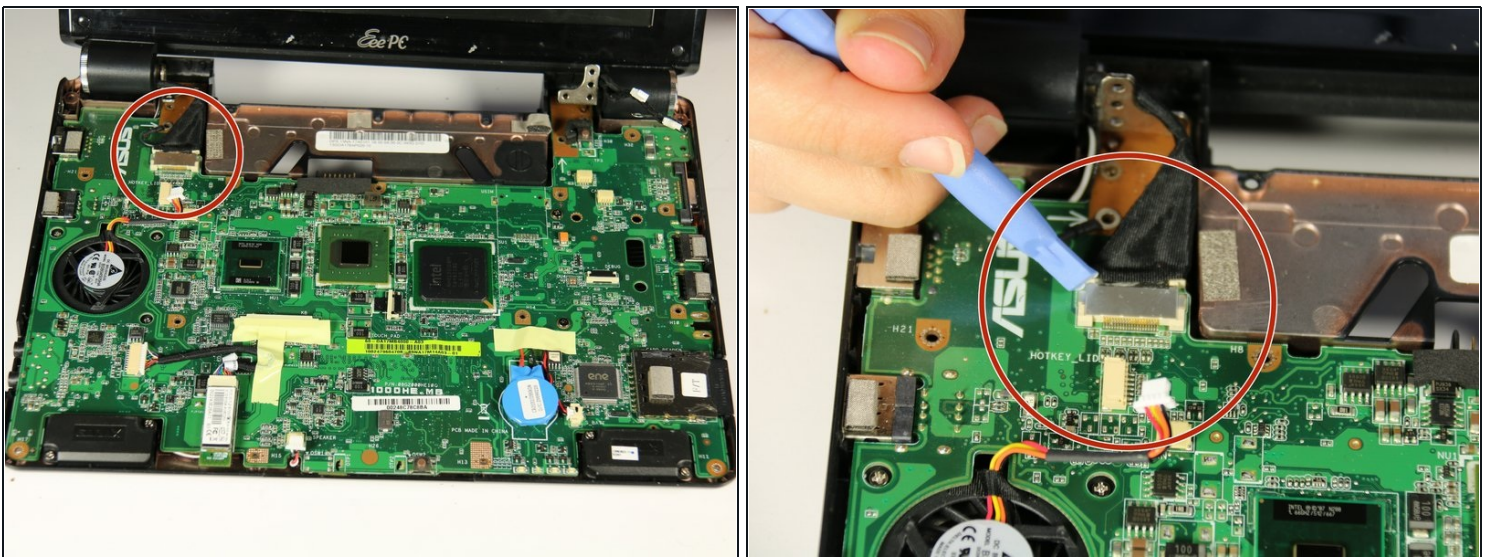
- For this step, orient the netbook with the screen folded down and the netbook flat on the ground with the back facing up. The battery compartment should be facing you.
- Locate the two 7 mm screws in the holes on either side of the battery compartment
- ⓘ This next step is challenging and requires the use of both hands or the help of another person.
- Opening up the computer screen, find the 3mm gold screw housing to the inside of each hinge point. These are next to the 7mm screws you removed in the previous step.
- In this next step, you will remove the 7 mm screw from the side of the battery compartment while holding the gold 3 mm screw housing in place.
- Position the netbook on its side. The side that is on the ground should not be the side that has the 7 mm screw you are trying to remove.
- Hold the gold 3 mm screw housing in place using the black [tweezers](#). Simultaneously remove the 7 mm screw on the side of the battery compartment, using the PH00 (+) Philips screwdriver head.
- ⓘ The screen will still be connected to the motherboard so do not try to pull it apart.

Step 21



- Orient the PC with the screen and motherboard towards you.
- Peel back the tape holding down screen wires.
- Detach white plastic wire bus connectors using the plastic opening tool.

Step 22



- In order to detach the screen connector from the top left side of the motherboard you must peel back the tape holding down the fan wires.
- Use the plastic opening tool to detach the cable from the motherboard.

Step 23



- Use the plastic opening tool or your hand to carefully lift the left hand side of the motherboard away from the bottom plastic casing.
- Lift and carefully pull out the motherboard to the left. The slots on the right side of the motherboard (for the USB and other connections) will pull free of the plastic housing when the motherboard is pulled to the left.

⚠ Warning: When removing the motherboard, be sure not to break off the plastic connector to the hard drive.

- ① The motherboard will still be connected to the screen with black and white wires on the top left side. Remove the wireless network card from the motherboard to detach completely.

To reassemble your device, follow these instructions in reverse order.