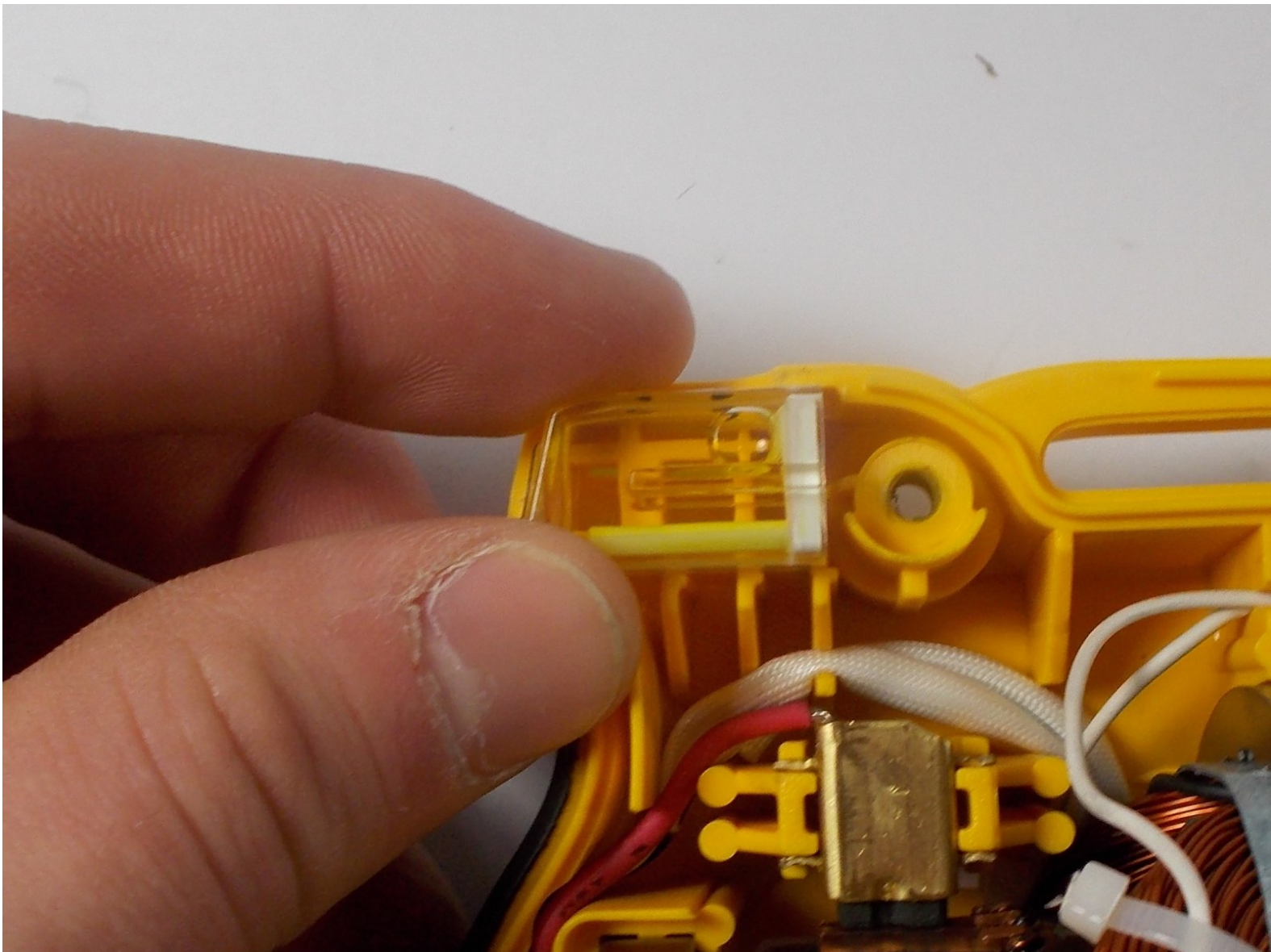




# DeWalt DWD112 Level Gauge Replacement

Replace the level gauge in your DeWalt DWD112.

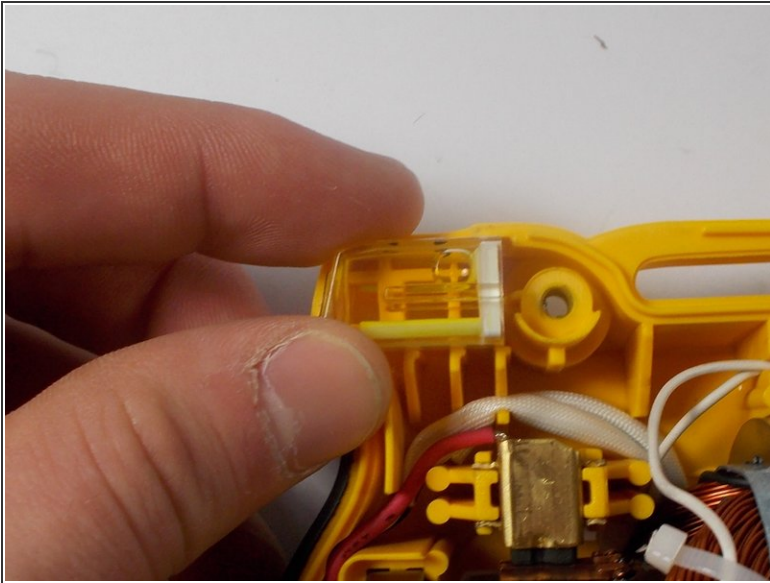
Written By: Samantha McSweeney



## INTRODUCTION

The drill will operate with a broken level, but you may want to replace it for better accuracy drilling. Use this guide to replace the level gauge in your DeWalt DWD112.

## Step 1 — Level Gauge



- ⓘ The level gauge rests freely from any other part.
- Grab the level gently and remove from the casing.

To reassemble your device, follow these instructions in reverse order.