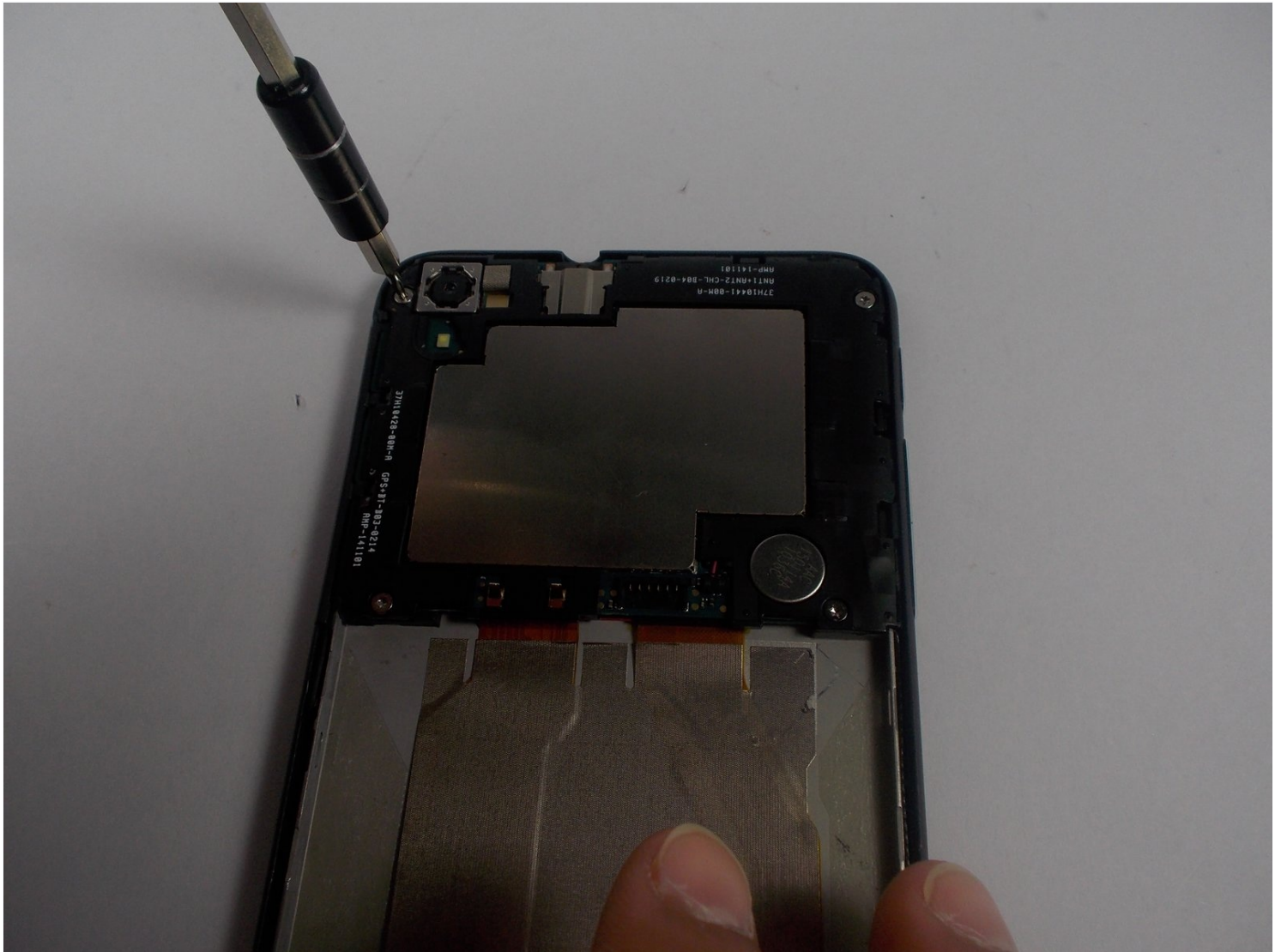




# HTC Desire 816 Camera Replacement

Capturing images is how people retain visible...

Written By: Saleena Douangphachanh



# INTRODUCTION

Capturing images is how people retain visible proof of memories being created. This guides purpose is to help the user replace a major key component in a cellular device.

---

## TOOLS:

[iFixit Opening Tool](#) (1)

[Spudger](#) (1)

[T5 Torx Screwdriver](#) (1)

[Phillips #000 Screwdriver](#) (1)

[Tweezers](#) (1)

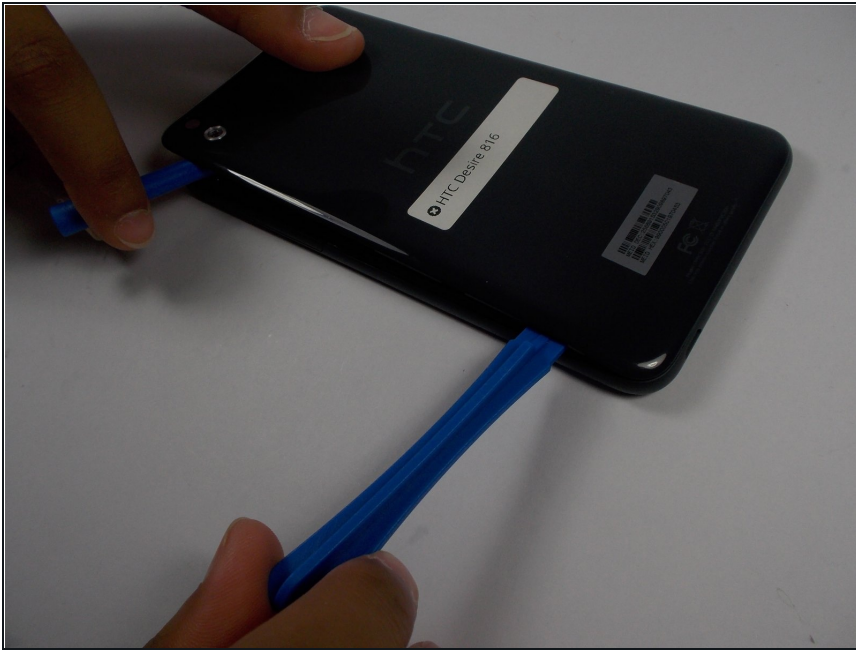
---

## Step 1 — Battery



- Pry open the back panel by inserting the plastic opening tool on the left of the camera. We find this spot the easiest to get the tool under the panel.

## Step 2



- Once you get an open spot, with a second plastic opening tool, slide down to the bottom of the phone to free the rest of side.

## Step 3



- There is adhesive between the battery and the back panel. Take a nylon spudger to cut through the adhesive.
- ⚠ Be sure to use the correct tool for the job. Metal spudgers can puncture an unprotected battery, potentially causing a fire.**

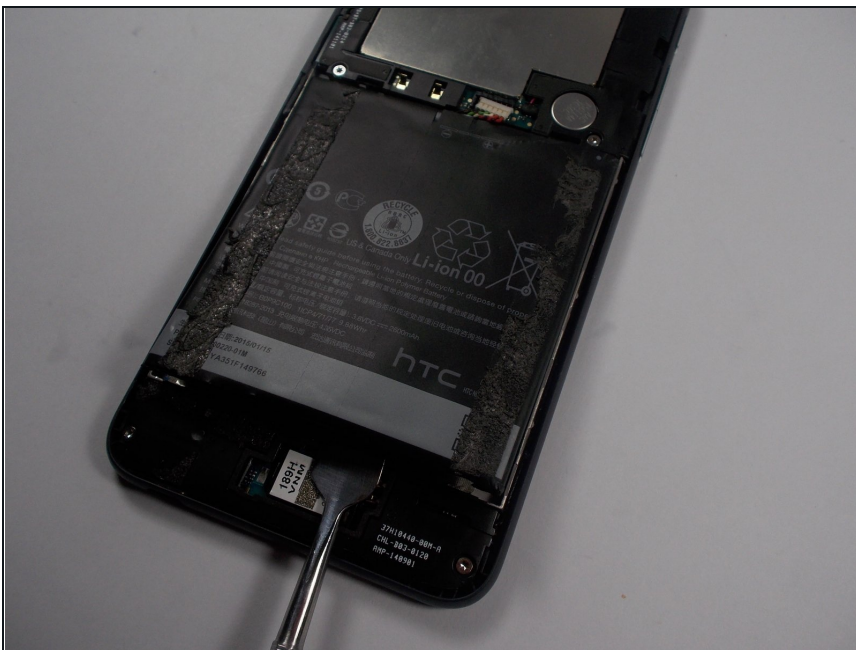


## Step 4



- Once all way around the bottom, the panel should be broken free of the adhesive, and the rest of the panel should pop right off.

## Step 5



- Insert a nylon spudger at the bottom of the battery and lift up to remove the battery.
- ⚠ Be sure to use the correct tool for the job. Metal spudgers can puncture an unprotected battery, potentially causing a fire.

## Step 6



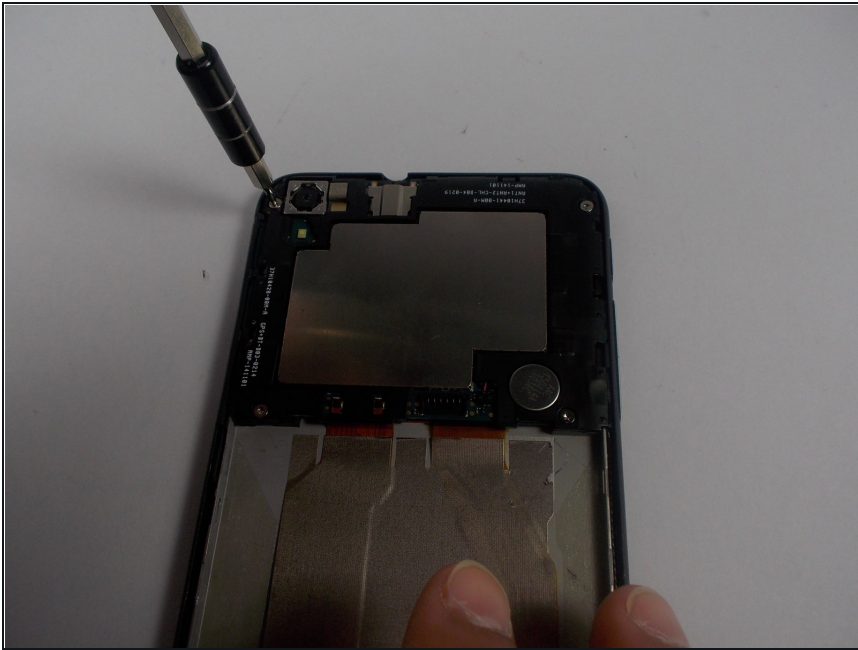
- There is adhesive on the other side of the battery as well, take the nylon spudger used to get off the panel and cut through.

## Step 7



- Carefully lift battery backside first to disconnect the white connector.

## Step 8 — Back Facing Camera



- Take the T5 screwdriver head to take out these 4 screws

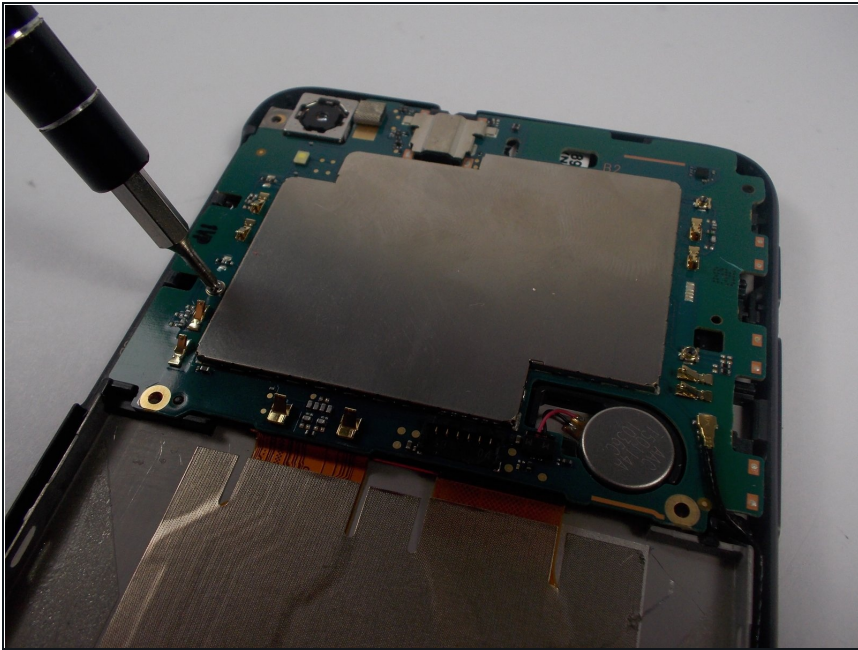
## Step 9



- Remove the black plastic casing with a plastic opening tool.

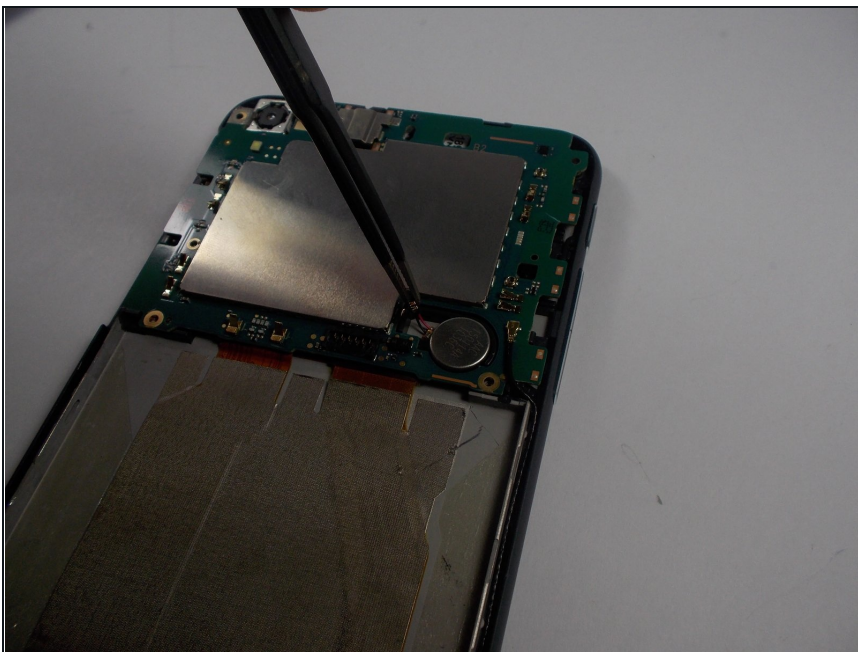


## Step 10



- Take the PH000 screwdriver head to take out the one screw that's holding down the green panel. (The screw is located on the left side of the panel)

## Step 11



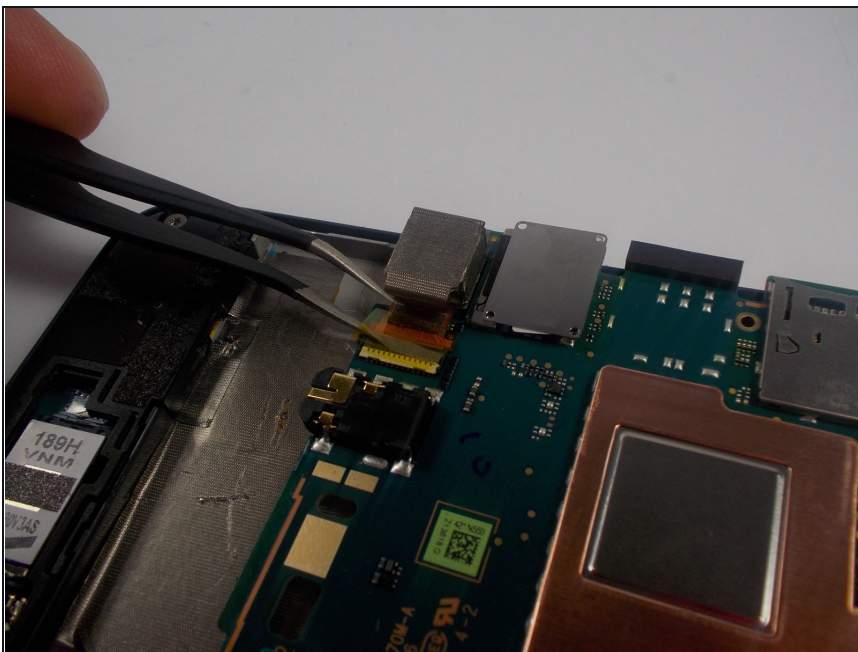
- With your pair of [tweezers](#) carefully unplug the black and red wire in order to remove the motherboard

## Step 12



- Once you have removed the wire, you can carefully lift up the motherboard

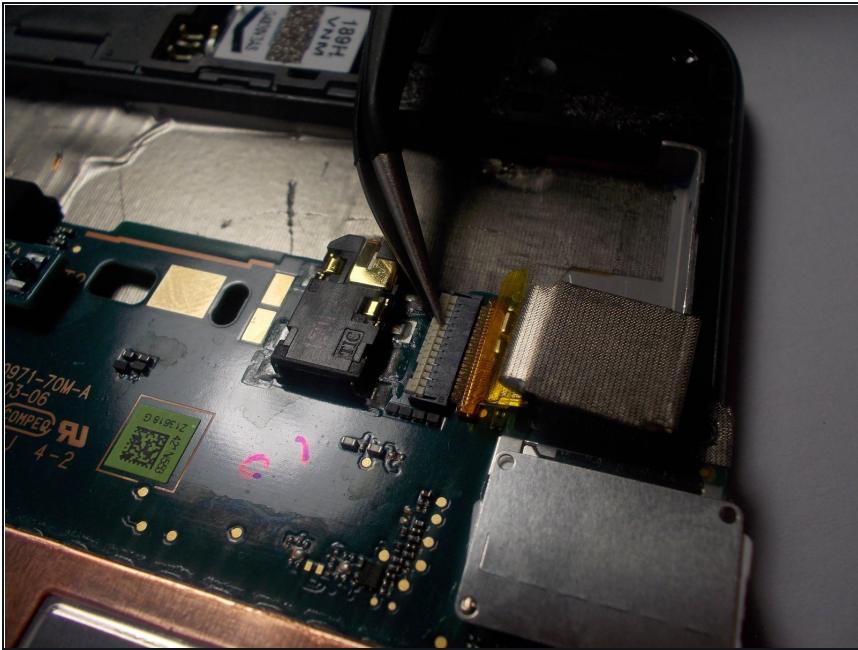
## Step 13



- Peel off the yellow film that's attaching the camera to the motherboard

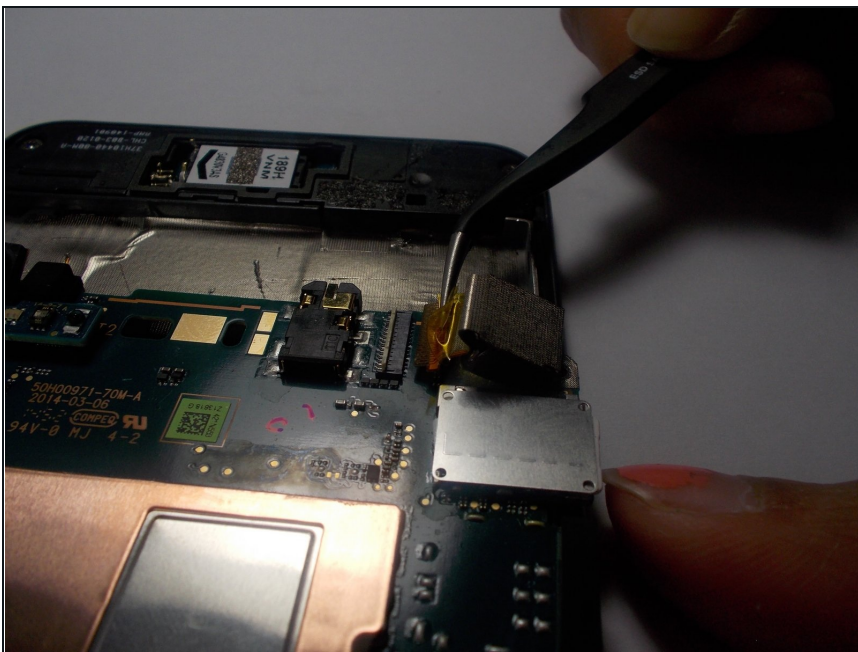


## Step 14



- Slowly lift up the white connector so that the camera's cable may properly be detached.

## Step 15



- Carefully peel off the adhesive so that the camera can be disconnected from the mother board

---

To reassemble your device, follow these instructions in reverse order.

