



HTC Desire 816 Camera Replacement

Replacing the camera for better picture quality.

Written By: Saleena Douangphachanh



INTRODUCTION

Capturing images is how people retain visible proof of memories being created. This guides purpose is to help the user replace a major key component in a cellular device.



TOOLS:

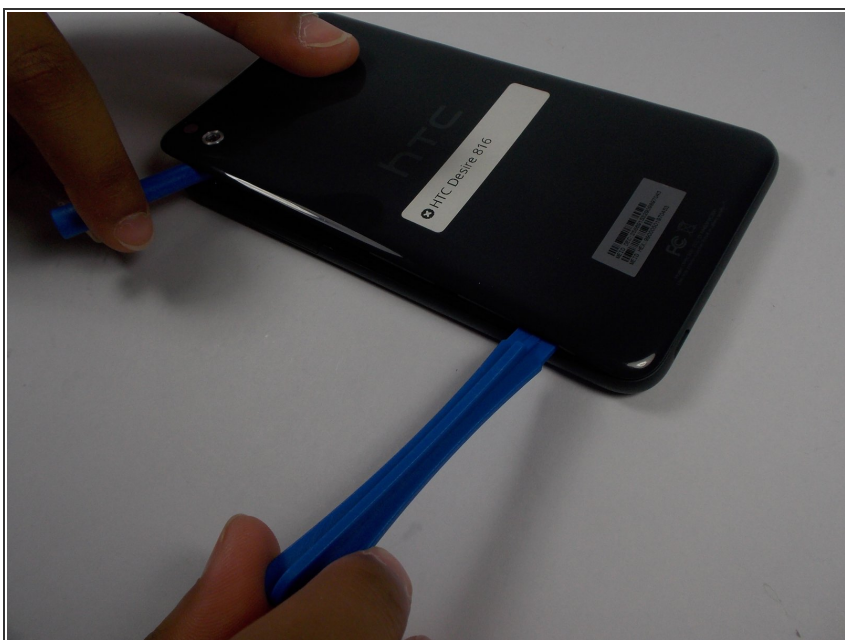
- [iFixit Opening Tools](#) (1)
 - [Spudger](#) (1)
 - [T5 Torx Screwdriver](#) (1)
 - [Phillips #000 Screwdriver](#) (1)
 - [Tweezers](#) (1)
-

Step 1 — Battery



- Pry open the back panel by inserting the plastic opening tool on the left of the camera. We find this spot the easiest to get the tool under the panel.

Step 2




- Once you get an open spot, with a second plastic opening tool, slide down to the bottom of the phone to free the rest of side.

Step 3



- There is adhesive between the battery and the back panel. Take a nylon spudger to cut through the adhesive.

 Be sure to use the correct tool for the job. Metal spudgers can puncture an unprotected battery, potentially causing a fire.

Step 4



- Once all way around the bottom, the panel should be broken free of the adhesive, and the rest of the panel should pop right off.

Step 5



- Insert a nylon spudger at the bottom of the battery and lift up to remove the battery.

⚠ Be sure to use the correct tool for the job. Metal spudgers can puncture an unprotected battery, potentially causing a fire.

Step 6



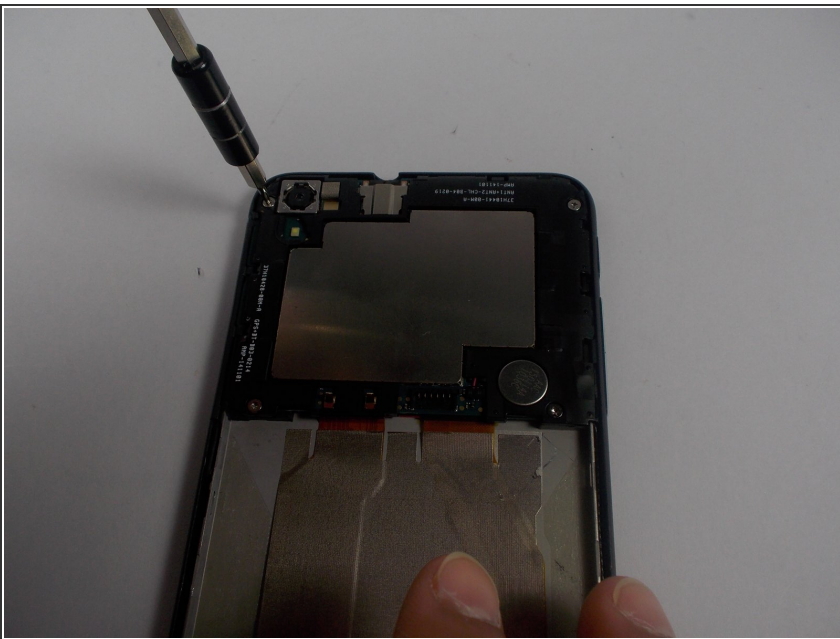
- There is adhesive on the other side of the battery as well, take the nylon spudger used to get off the panel and cut through.

Step 7



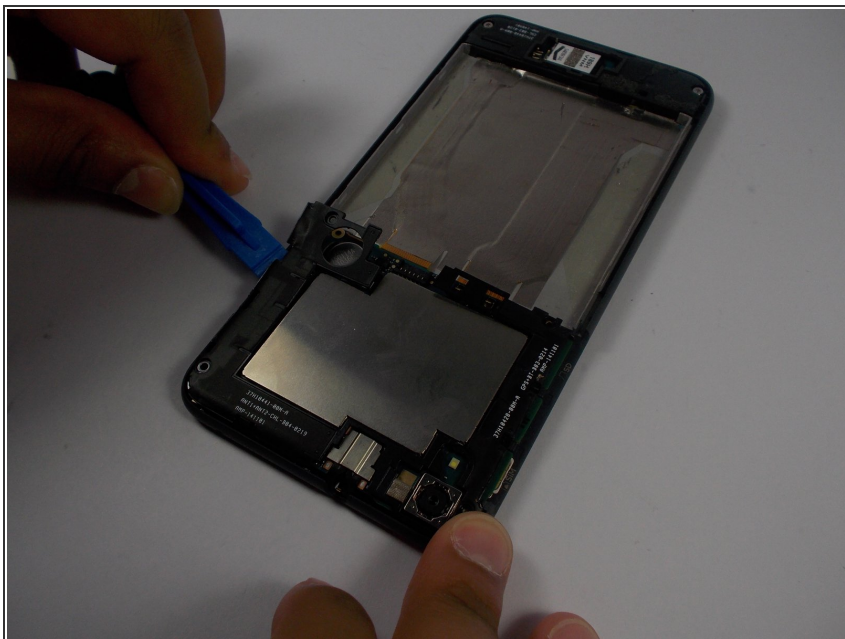
- Carefully lift battery backside first to disconnect the white connector.

Step 8 — Back Facing Camera



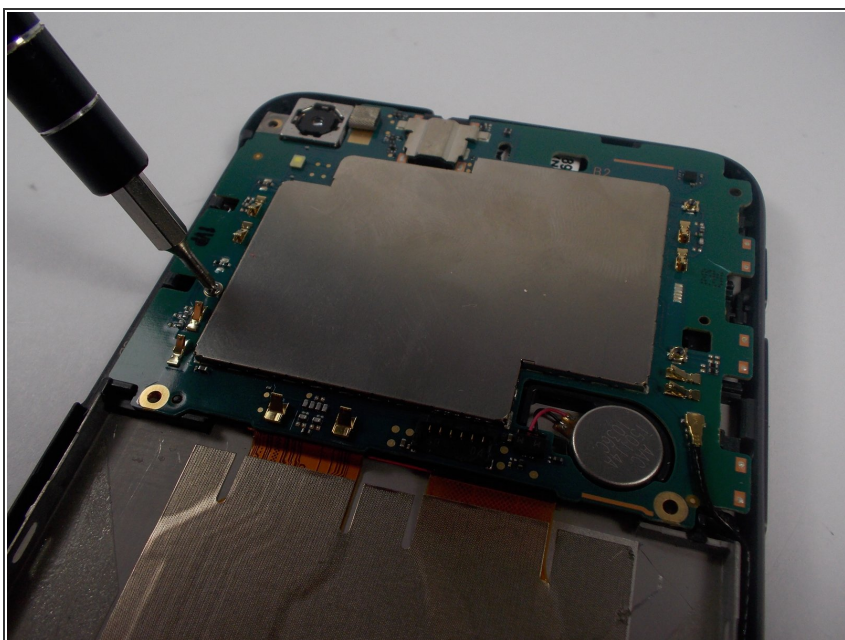
- Take the T5 screwdriver head to take out these 4 screws

Step 9



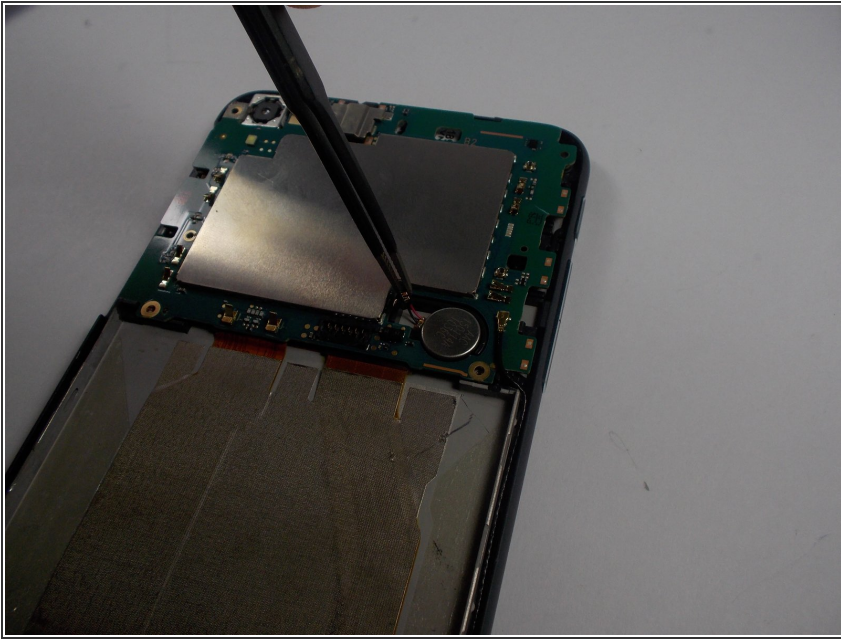
- Remove the black plastic casing with a plastic opening tool.

Step 10



- Take the PH000 screwdriver head to take out the one screw that's holding down the green panel. (The screw is located on the left side of the panel)

Step 11



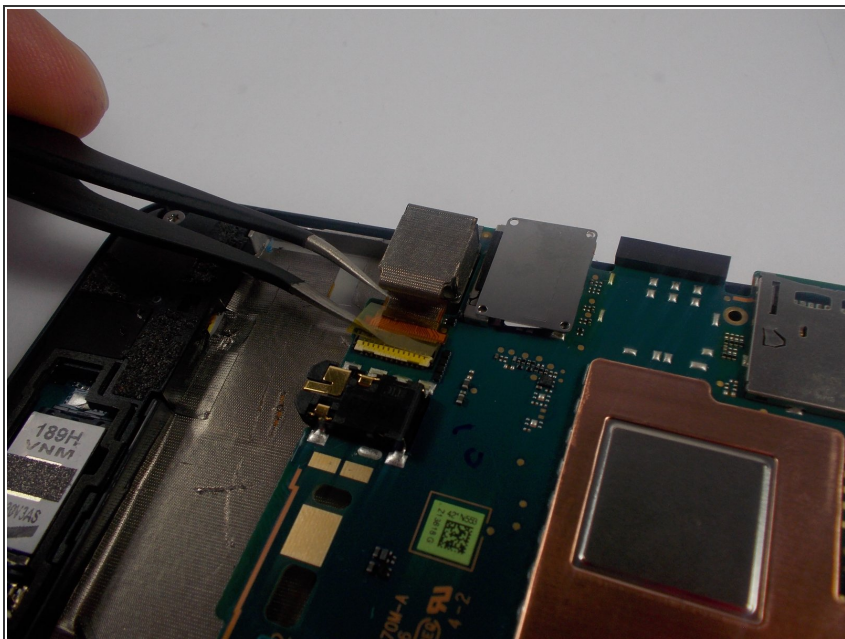
- With your pair of tweezers carefully unplug the black and red wire in order to remove the motherboard

Step 12



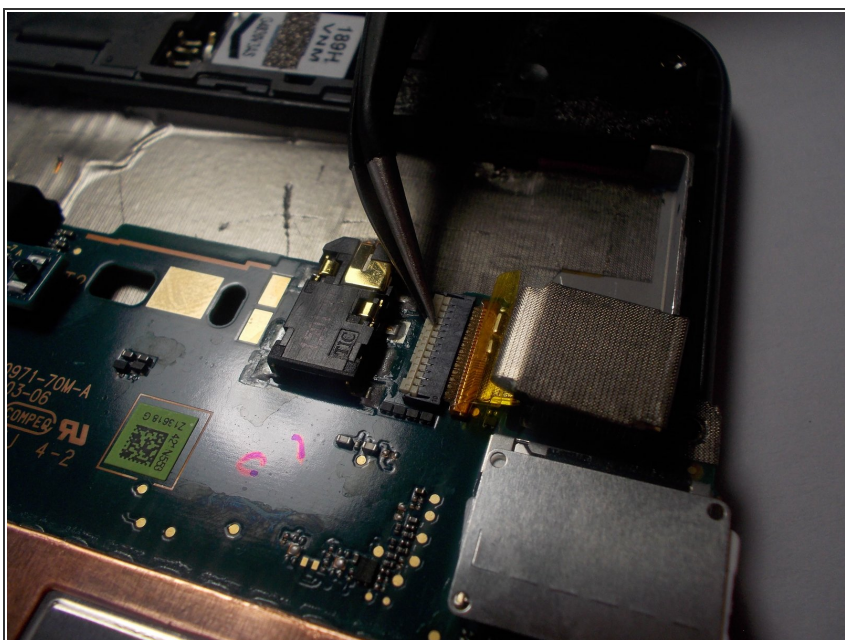
- Once you have removed the wire, you can carefully lift up the motherboard

Step 13



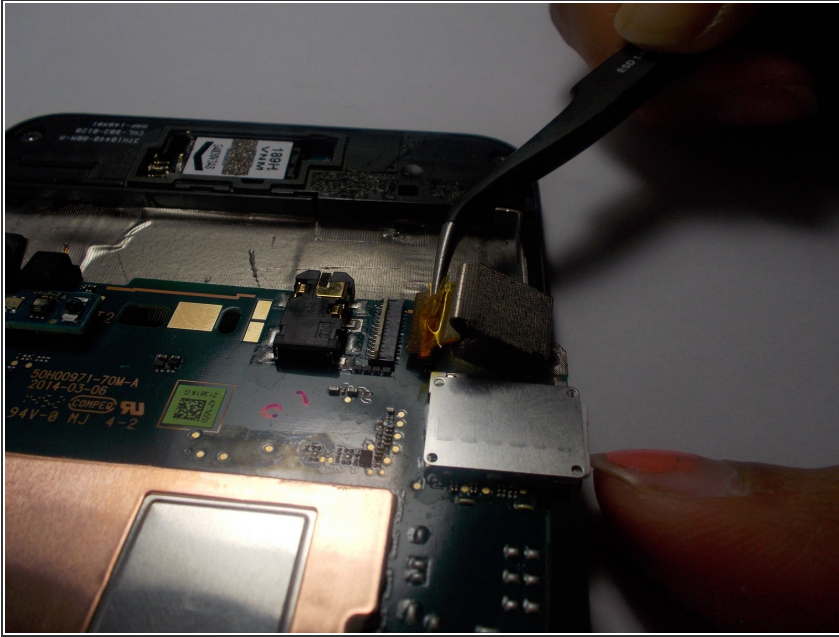
- Peel off the yellow film that's attaching the camera to the motherboard

Step 14



- Slowly lift up the white connector so that the camera's cable may properly be detached.

Step 15



- Carefully peel off the adhesive so that the camera can be disconnected from the mother board

To reassemble your device, follow these instructions in reverse order.