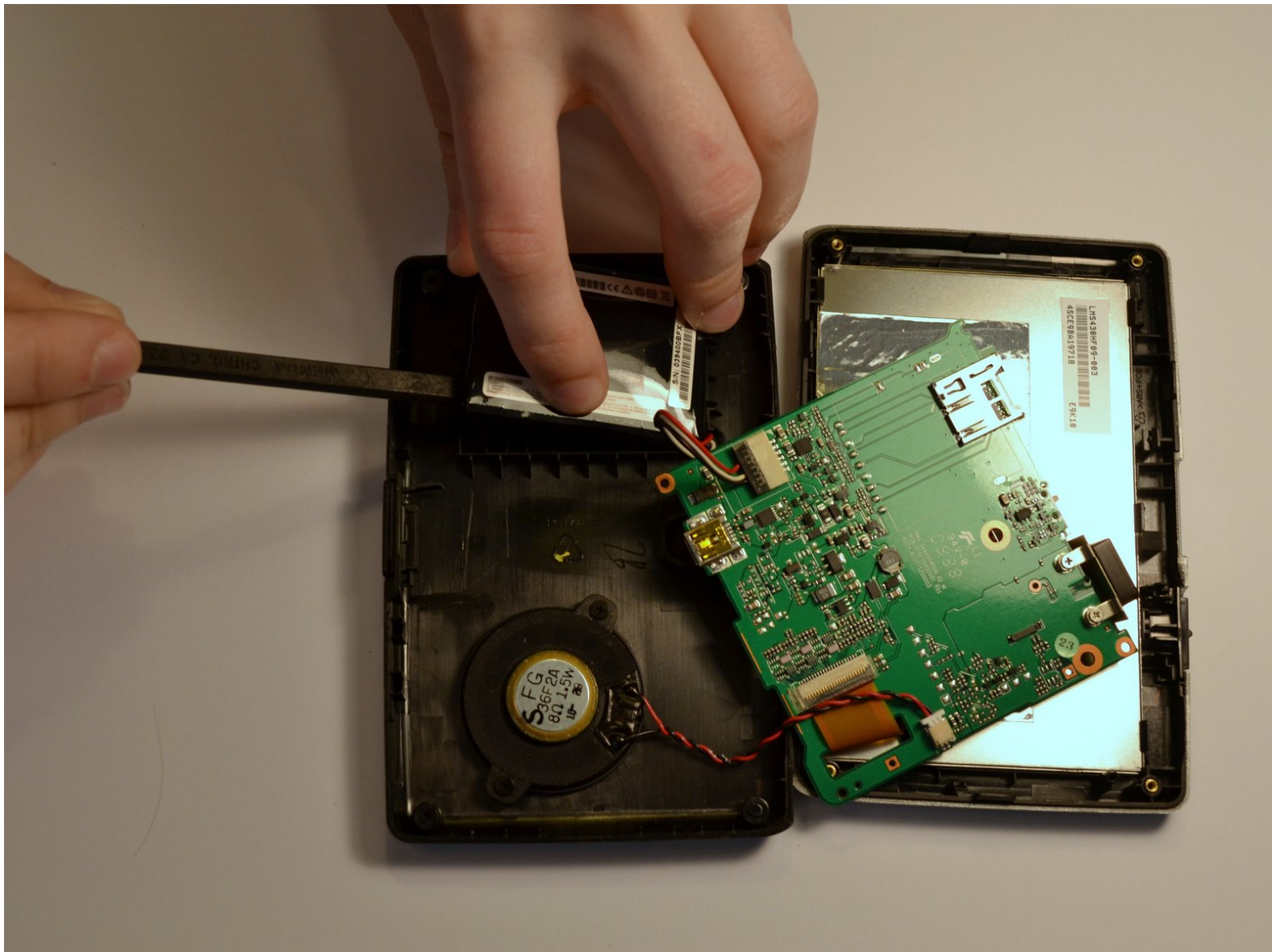




# Magellan RoadMate 1440 Battery Replacement

This guide will illustrate how to remove and replace the battery in your Magellan RoadMate 1440.

Written By: Jeremy Johnson



---

# INTRODUCTION

Follow this guide if you need to replace the battery of your Magellan RoadMate 1440.



## TOOLS:

- [Phillips #0 Screwdriver](#) (1)
  - [Heavy-Duty Spudger](#) (1)
-

## Step 1 — Magellan RoadMate 1440 Back Cover Disassembly



- Place the GPS with the screen facing down.

## Step 2



- Remove the four 4.2 mm screws on the back cover of the device using a Phillips #0 screwdriver.



## Step 3



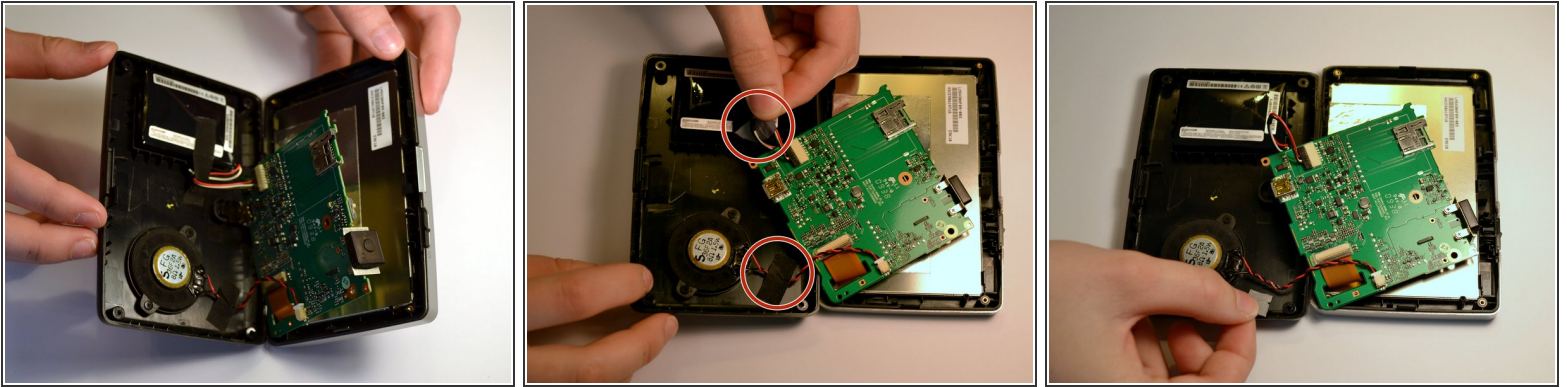
- Remove the two 4.2mm screws at the bottom of the device using a Phillips #0 screwdriver.

## Step 4



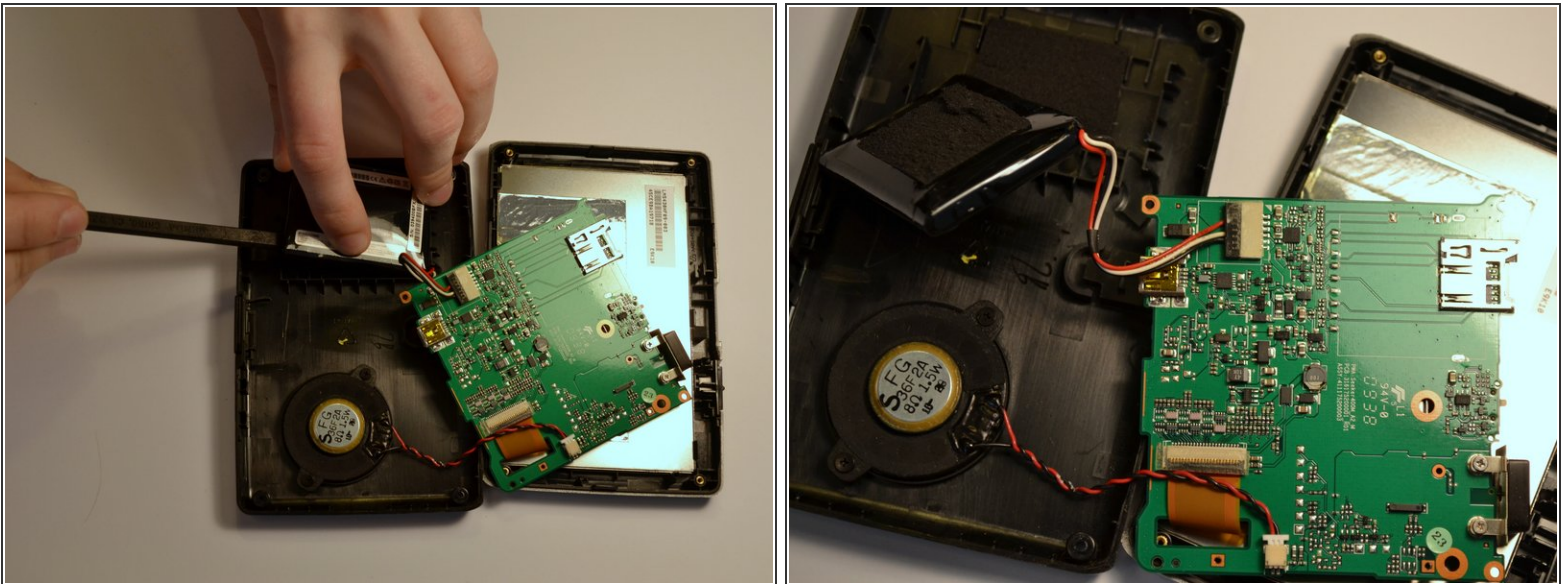
- Insert the black spudger into the crease in the side of the GPS.
- Move the end of the spudger down to break the seal between the two plastic shells.
- Continue doing this along each side of the GPS to ensure a smooth removal.

## Step 5



- Fully separate the two sides of the case.
- Remove the tape on the battery wires and the tape on the speaker wires.

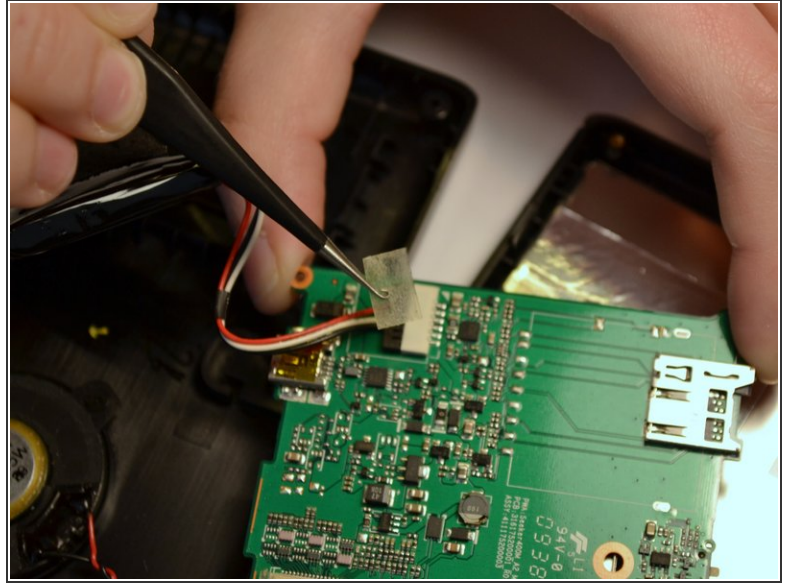
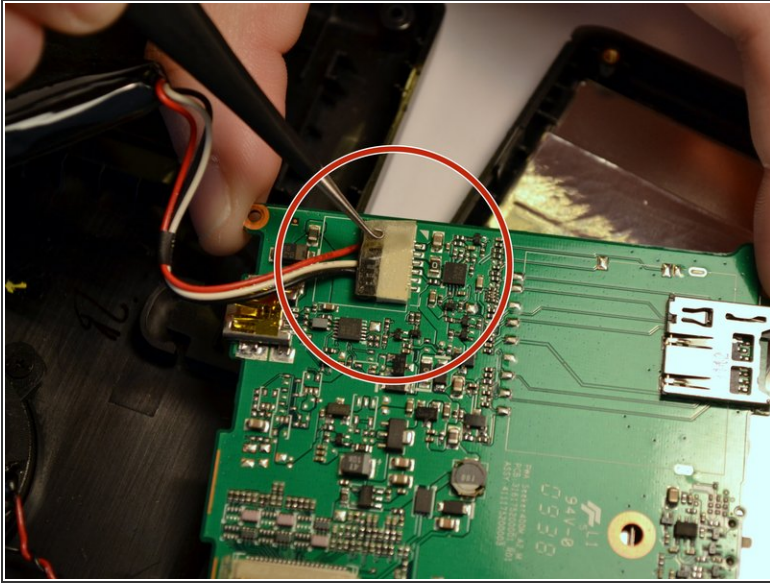
## Step 6 — Battery



- Use the black spudger to break the seal between the adhesive and battery. Use the same spudger to continue to pry the battery from the backing
- ⓘ This may be a little tough to separate the battery and the adhesive

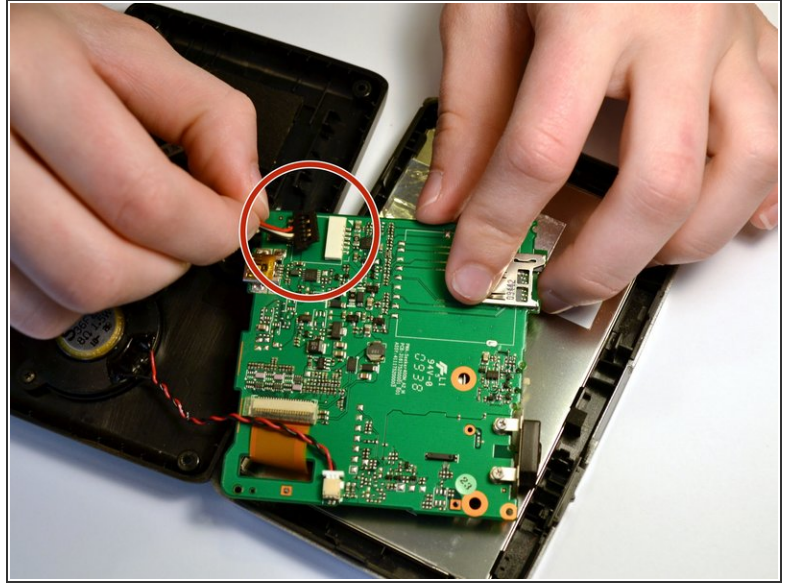
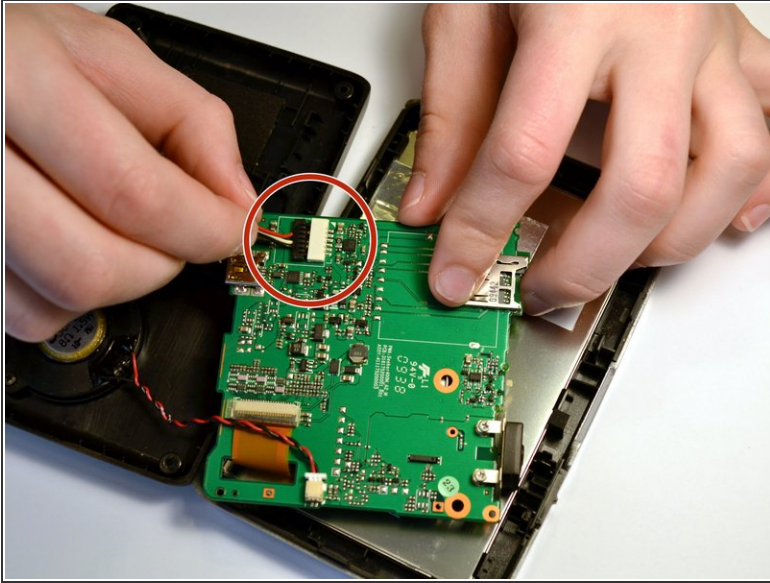


## Step 7



- Lift the battery from the device
- Once the battery is free from the adhesive, remove the piece of tape with a pair of tweezers that is covering the connection of the battery to the motherboard.

## Step 8



- Unplug the battery from the motherboard by pulling back the clips and pulling the wires away from the motherboard's receptacle
- ⚠ It is important for your and the device's safety to remove the battery before continuing with any other part removals.
- ℹ It is not necessary to separate the red and white wires from the battery. A replacement battery pack will come with similar wires already attached.

To reassemble your device, follow these instructions in reverse order.