



Dell Inspiron 15 3541 Keyboard Replacement

This guide will explain how to replace a faulty keyboard for the Dell Inspiron 3541 laptop.

Written By: Allison



INTRODUCTION

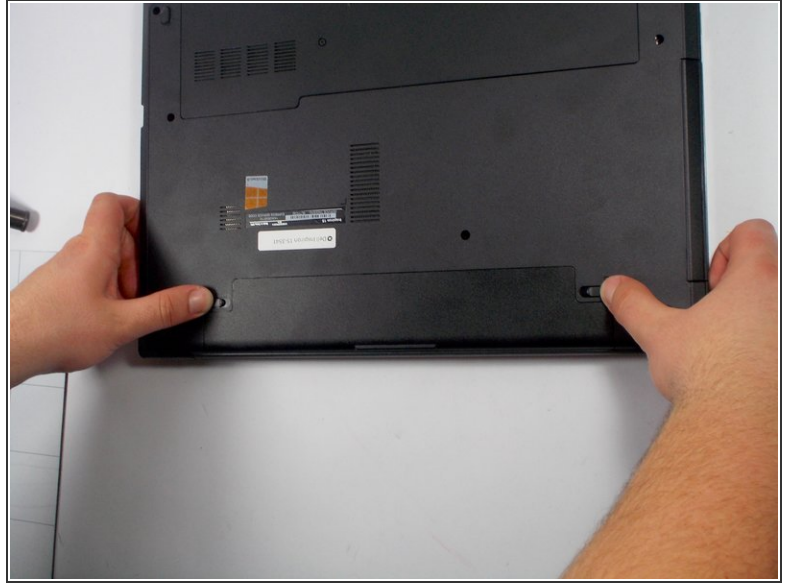
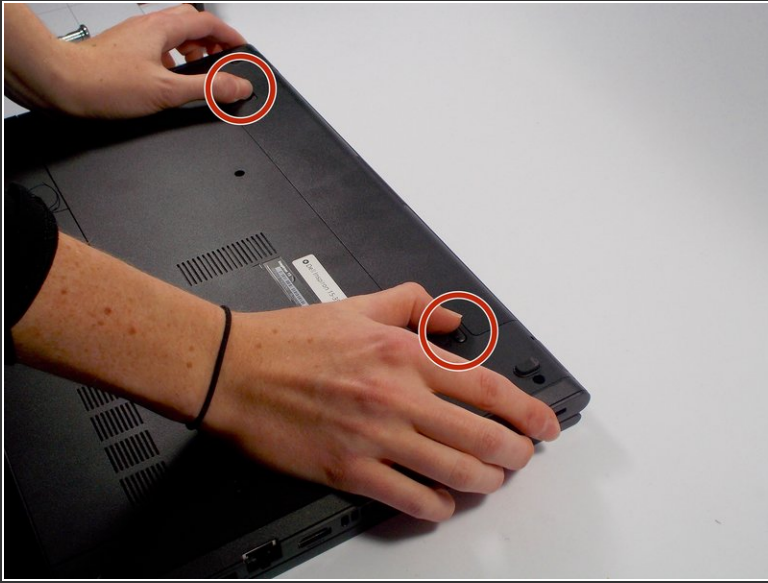
By reading this guide, you will learn how to remove the laptop keyboard so that it can be replaced with another. Make sure the laptop is completely powered off and disconnected from the power source before starting this guide.



TOOLS:

- [Spudger](#) (1)
-

Step 1 — Battery




 Make sure your laptop is powered off completely and is not connected to the charger.

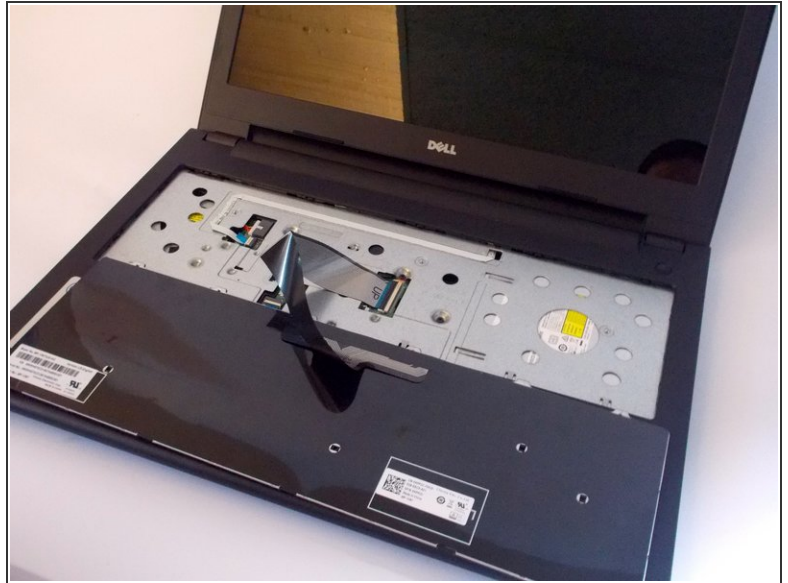
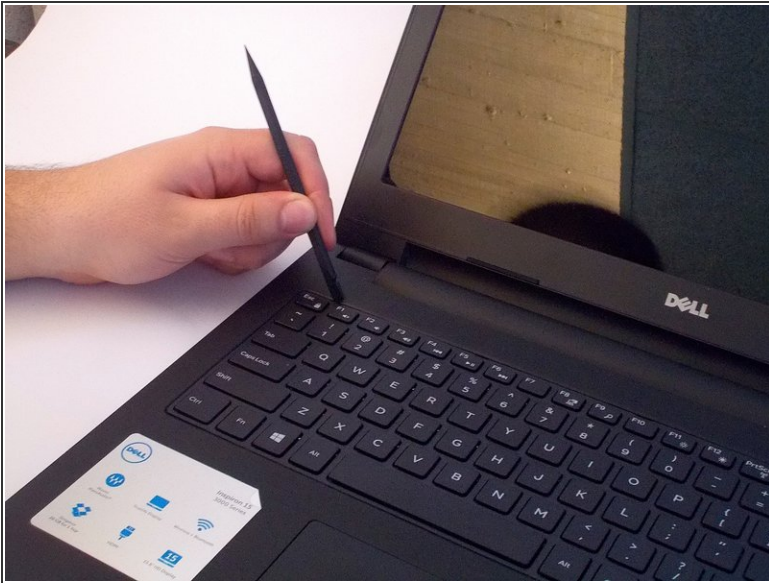
- Close the laptop and place it so that the back of the screen is lying flat on your work surface.
- Slide both of the battery-release latches towards the outer edges of the laptop to unlock the battery flap.

Step 2



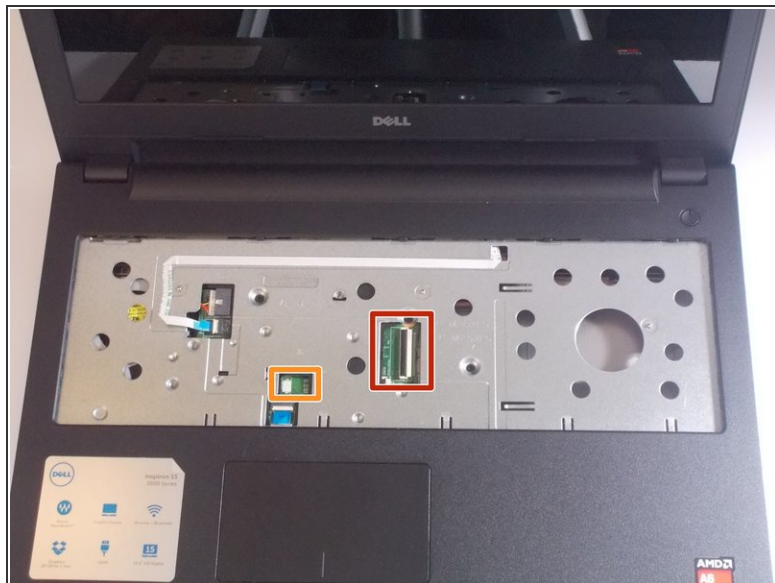
- Lift the battery at an angle using your fingertips and remove it from the laptop.
-  Press and hold the power button for 5 seconds. This ensures that any remaining power will drain out of the computer.

Step 3 — Keyboard



- Open the laptop and fully extend the screen.
- Using the nylon spudger, pry the keyboard off the laptop body.
- Using your hands, remove the keyboard from the body and place it facedown on the track pad. There will be a cord connecting the laptop and the keyboard: keep this cord intact.

Step 4



- Unhook the connector and you can now remove the keyboard from the laptop
- ⓘ If your version of this laptop has a backlit keyboard, there will be two connectors; the one highlighted orange will also have to be removed.

To reassemble your device, follow these instructions in reverse order.