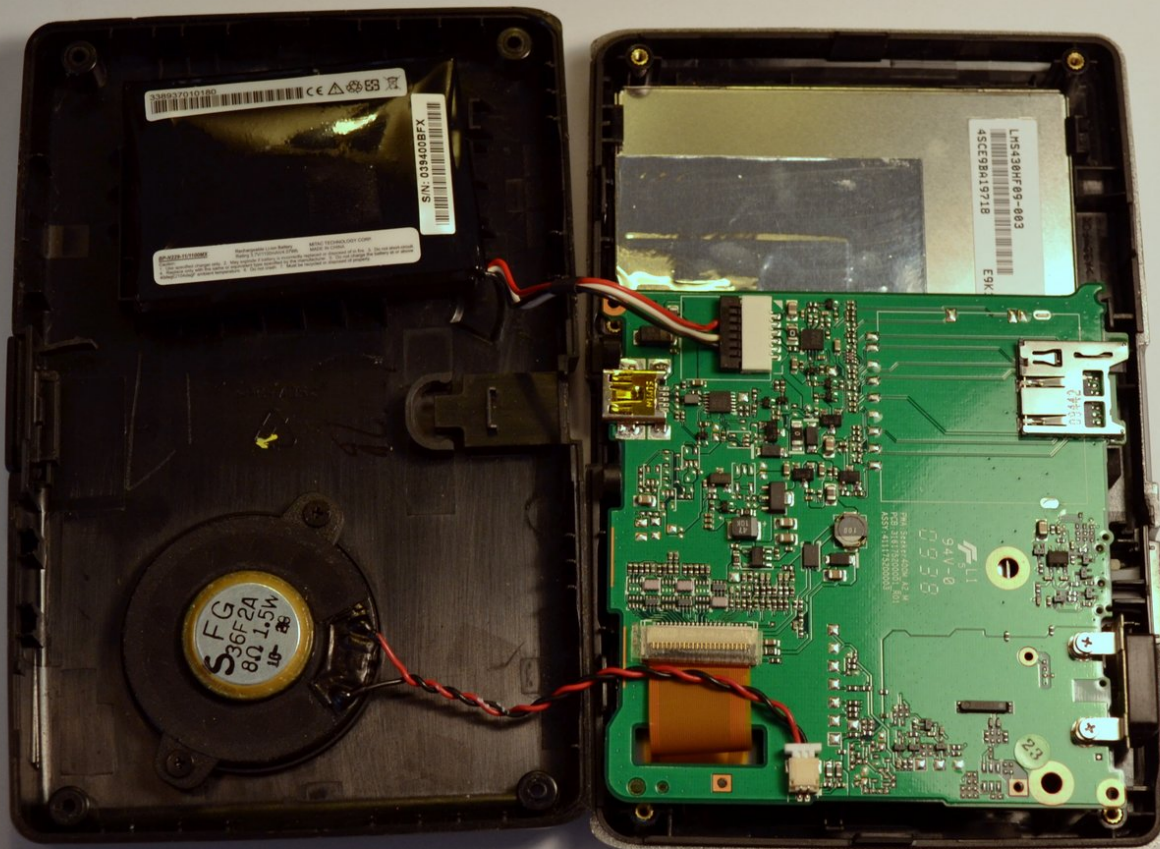




Magellan RoadMate 1440 Speaker Replacement

This guide will break down the steps on how to remove the speaker from the device.

Written By: Lauren Cain



INTRODUCTION

This guide will break down the steps on how to remove the speaker from the device.



TOOLS:

- [Heavy-Duty Spudger](#) (1)
 - [Phillips #0 Screwdriver](#) (1)
-

Step 1 — Magellan RoadMate 1440 Back Cover Disassembly



- Place the GPS with the screen facing down.

Step 2



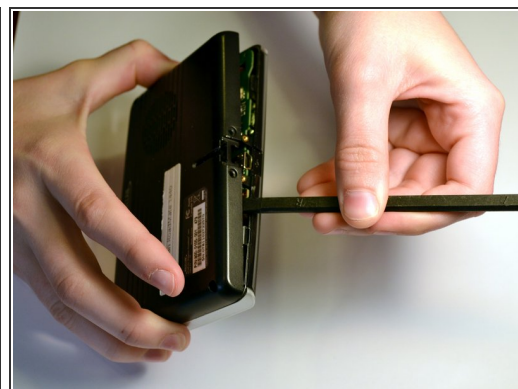
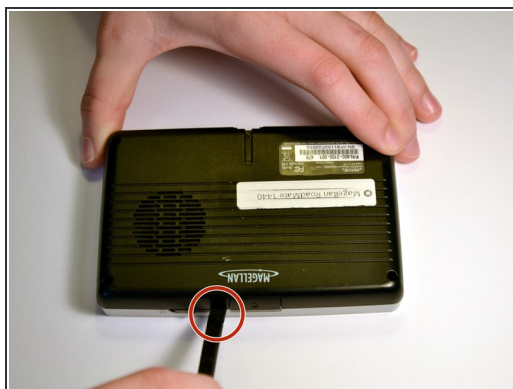
- Remove the four 4.2 mm screws on the back cover of the device using a Phillips #0 screwdriver.

Step 3



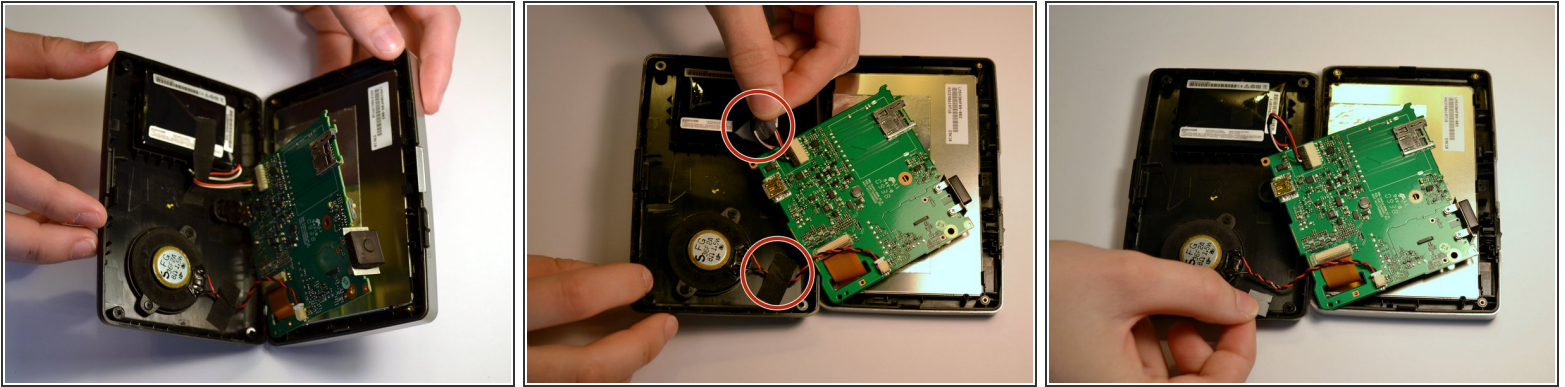
- Remove the two 4.2mm screws at the bottom of the device using a Phillips #0 screwdriver.

Step 4



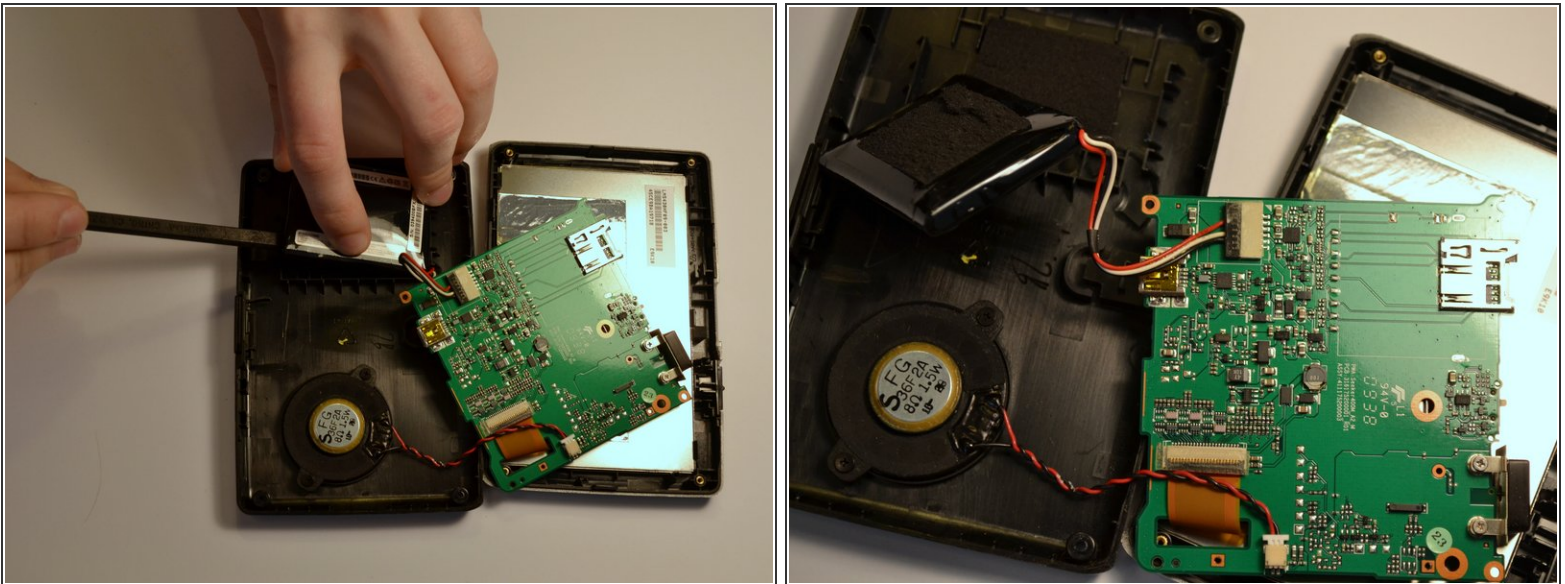
- Insert the black spudger into the crease in the side of the GPS.
- Move the end of the spudger down to break the seal between the two plastic shells.
- Continue doing this along each side of the GPS to ensure a smooth removal.

Step 5



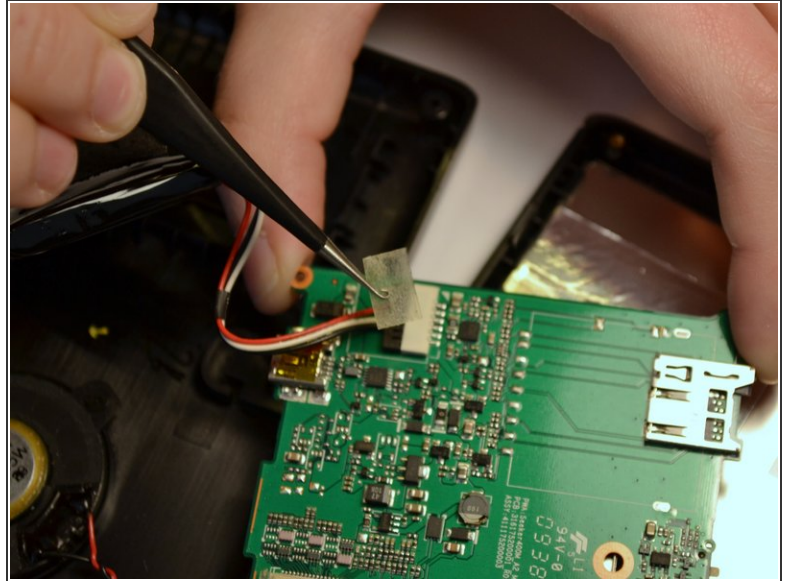
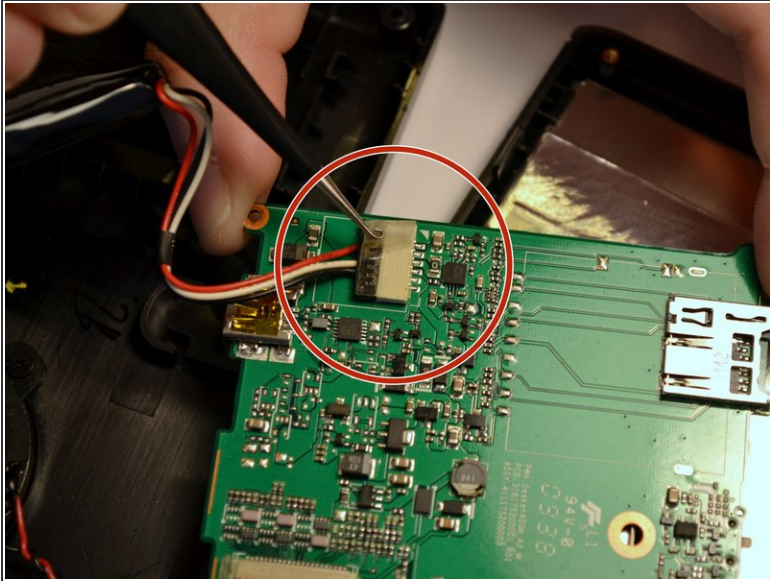
- Fully separate the two sides of the case.
- Remove the tape on the battery wires and the tape on the speaker wires.

Step 6 — Battery



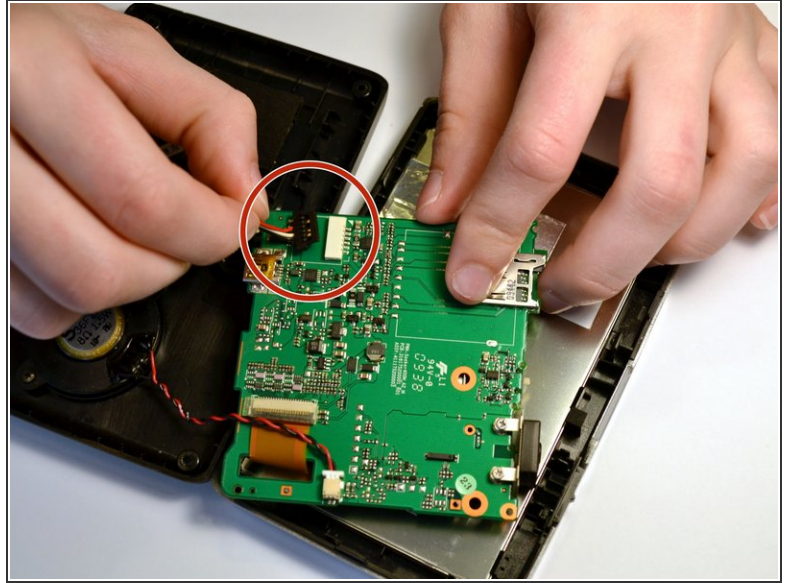
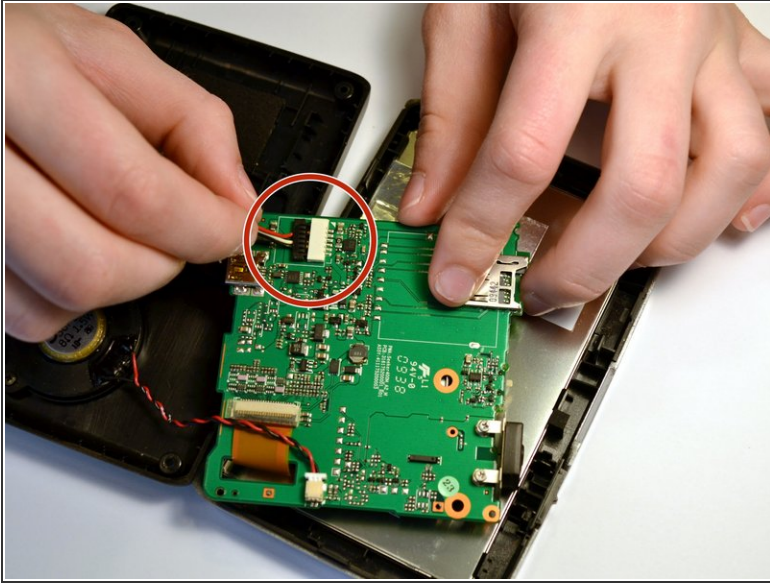
- Use the black spudger to break the seal between the adhesive and battery. Use the same spudger to continue to pry the battery from the backing
- ⓘ This may be a little tough to separate the battery and the adhesive

Step 7



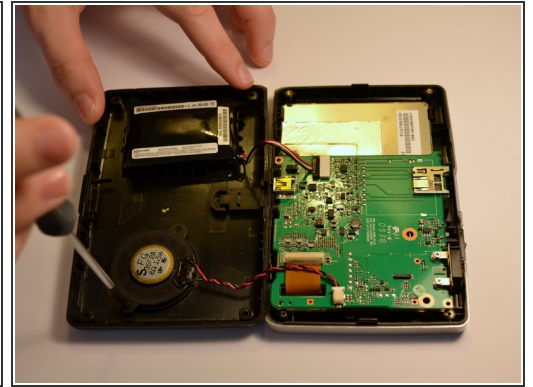
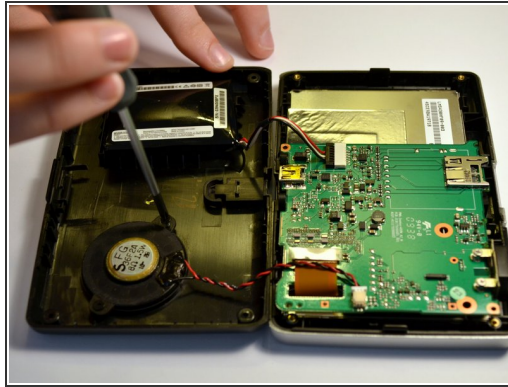
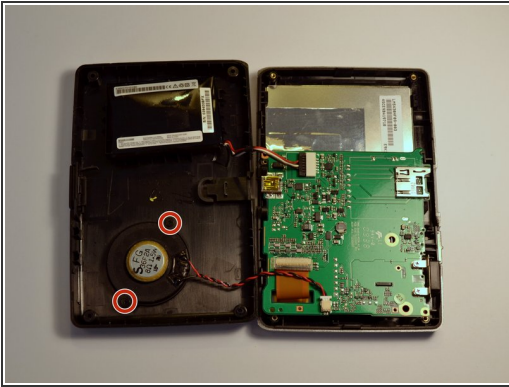
- Lift the battery from the device
- Once the battery is free from the adhesive, remove the piece of tape with a pair of tweezers that is covering the connection of the battery to the motherboard.

Step 8



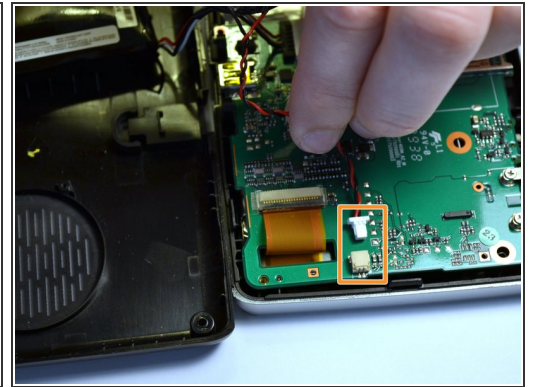
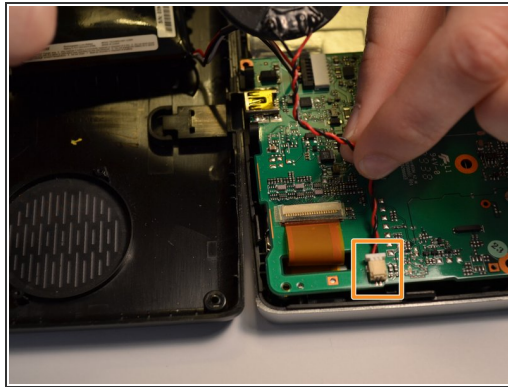
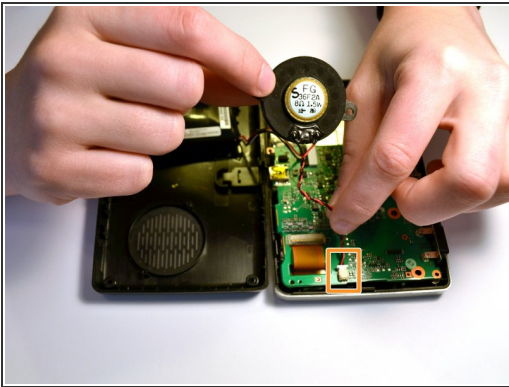
- Unplug the battery from the motherboard by pulling back the clips and pulling the wires away from the motherboard's receptacle.
- ⚠ It is important for your and the device's safety to remove the battery before continuing with any other part removals.
- ℹ It is not necessary to separate the red and white wires from the battery. A replacement battery pack will come with similar wires already attached.

Step 9 — Speaker



- After the back has been removed, locate each of the screws securing the speaker to the inside of the back cover.
- Use a Phillips #0 screwdriver to remove the two 3.8mm Phillips #0 screws.

Step 10



- ⓘ The speaker is connected to the motherboard by a few wires
- Gently remove the connector from the motherboard to completely remove the speaker.

To reassemble your device, follow these instructions in reverse order.