



Olympus TG-820 iHS Locking Mechanism Replacement

This guide will provide step by step instructions on how to replace the battery compartment of the Olympus TG-820 iHS camera.

Written By: Larissa Knight



INTRODUCTION

Are the seals on your locking mechanism wearing down? This guide will provide assistance in replacing and improving the water capability of your camera.



TOOLS:

- [Phillips #00 Screwdriver](#) (1)
-


Step 1 — Battery



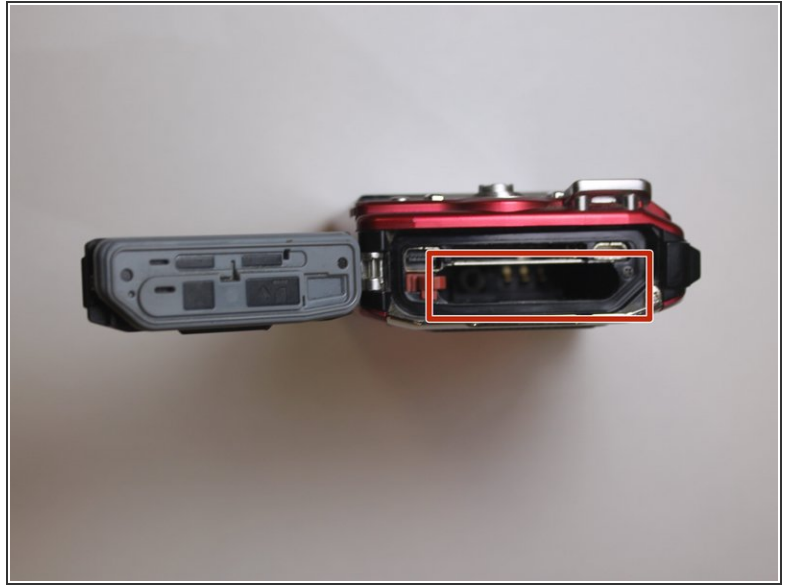
- Orient camera to look directly at battery compartment side as shown.

Step 2



- Locate the two latches on the battery compartment.
 - First, move the "lock" switch left to reveal red indicator.
 - Next, move the "cover latch" switch downward to reveal red indicator.
-  You have to move the switches in that order for the compartment to unlatch.

Step 3



- Allow the battery compartment latch to completely open.
- Insert battery with the writing face up.
- ⓘ The bigger slot is for the battery. The smaller slot is for the memory card.
- ⓘ Battery not shown.

Step 4 — Locking Mechanism



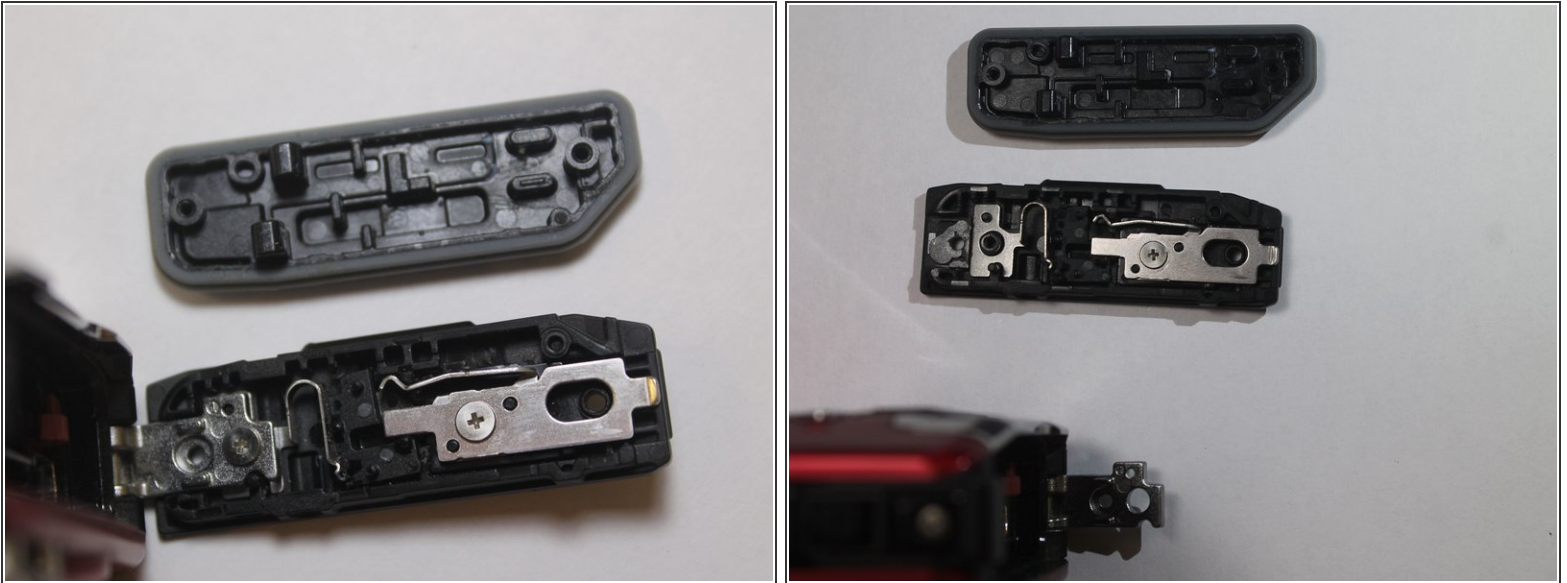
- Locate and remove the 4.7mm Phillips #000 screw on the back side of the battery compartment locking mechanism.
- Locate and remove the 4.7mm Phillips #000 screw on the front side of the battery compartment locking mechanism.

Step 5



- Locate the two screws on the side of the battery compartment.
- Remove the two 4.85mm Phillips #000 screws.

Step 6



- Once all 4 screws are out, the back panel of the battery compartment will come off.
- The entire battery compartment cover will also detach from the camera.

To reassemble your device, follow these instructions in reverse order.