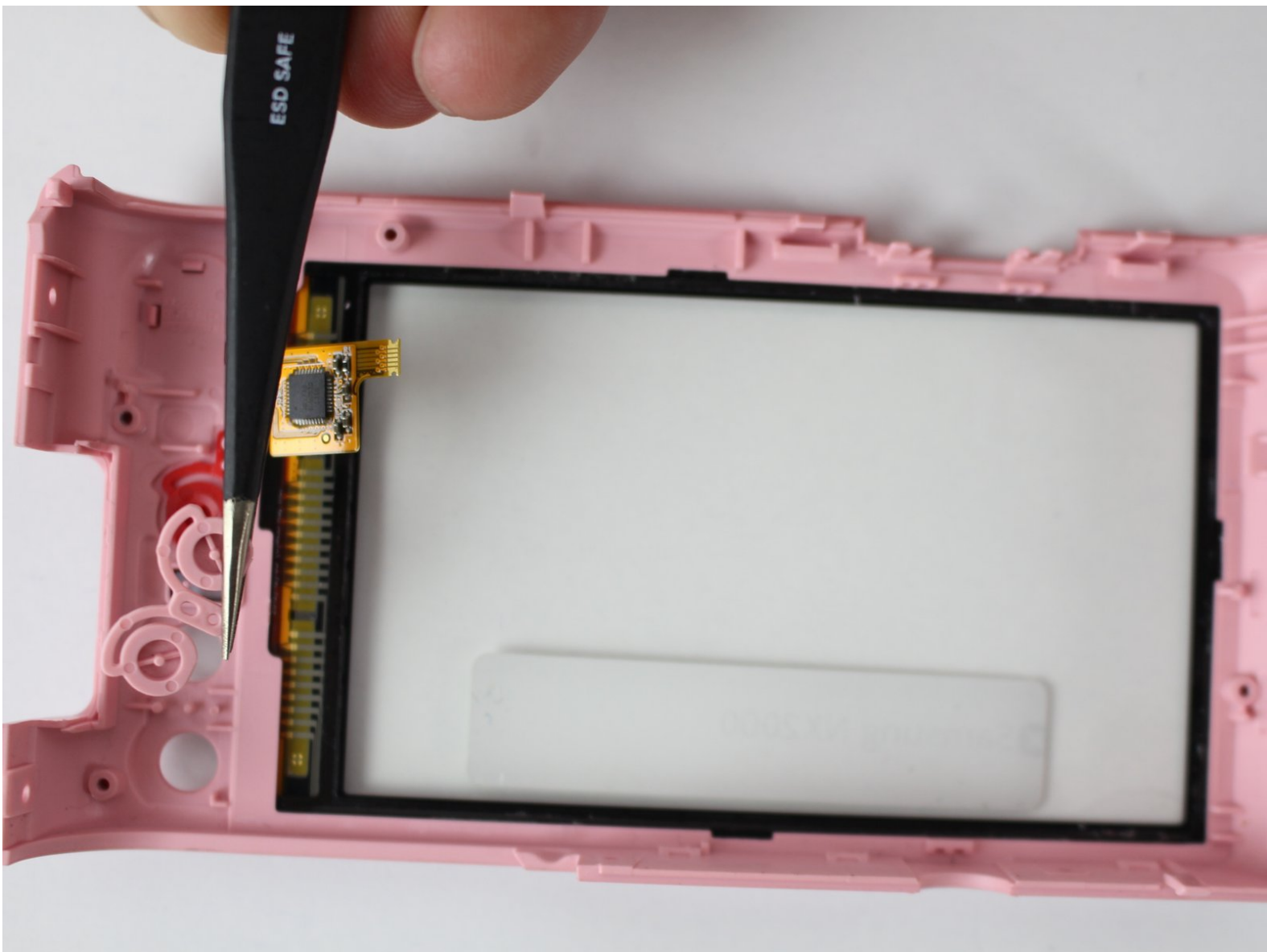




# Samsung NX2000 Menu Buttons Replacement

This is a step by step replacement guide on how to remove the front menu button on the LCD side of the camera. This menu buttons are the home and play back buttons.

Written By: Katarina Raic



## INTRODUCTION

If your home and play buttons are not working on your Samsung NX2000, we are here to show you step-by-step how you can replace them yourself. It will connect with the previous LCD display replacement guide and show you the correct way to remove this button.



### TOOLS:

- [Spudger](#) (1)
  - [Tri-point Y0 Screwdriver](#) (1)
  - [Tweezers](#) (1)
-

## Step 1 — LCD



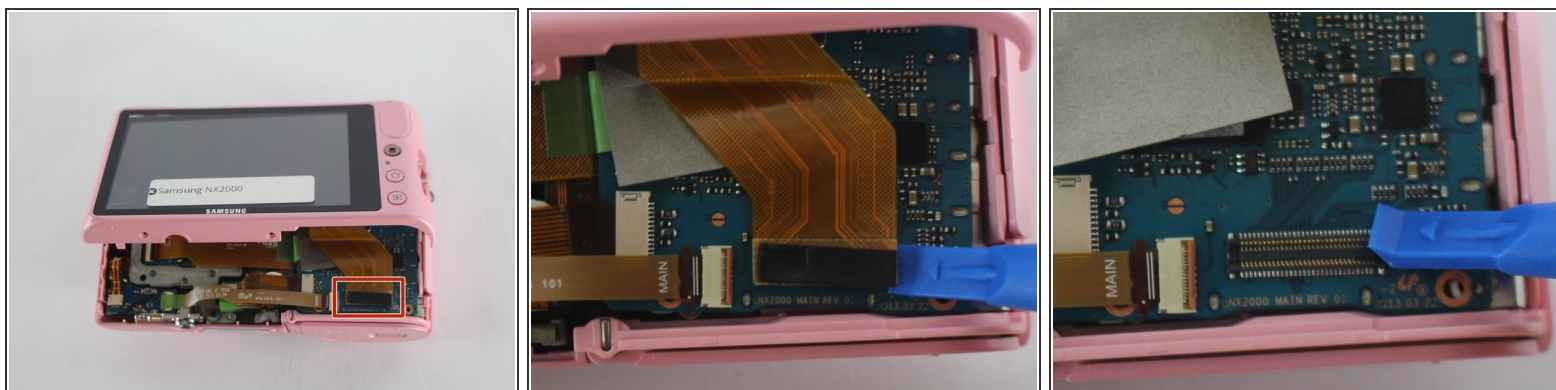
- First begin by flipping your camera upside down.
  - Remove the seven 4mm screws from indicated circles shown using a Y0 screwdriver. There are three on the bottom, and two on each side
- ⚠ Remember to store the screws in a secure place.

## Step 2



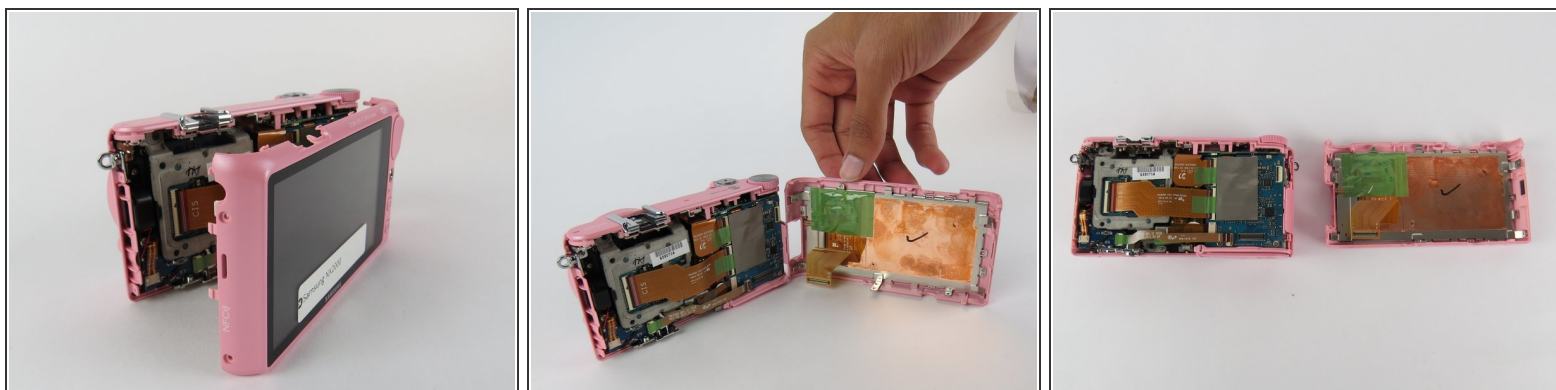
- Insert a plastic opening tool into the gap between the camera body and the back panel. Carefully pry open the camera and separate the back panel.
- ⚠ When working with electronics, it's important to choose a tool that's ESD-safe to avoid accidental damage to the device. The metal spudger is great when you need serious prying power, but the regular black nylon spudger or a plastic opening tool should be used whenever possible.

## Step 3



- Before taking it apart you'll have to detach the display ribbon cable.
- Use a plastic opening tool, lift up the black strip to release the ribbon cable from the connector.

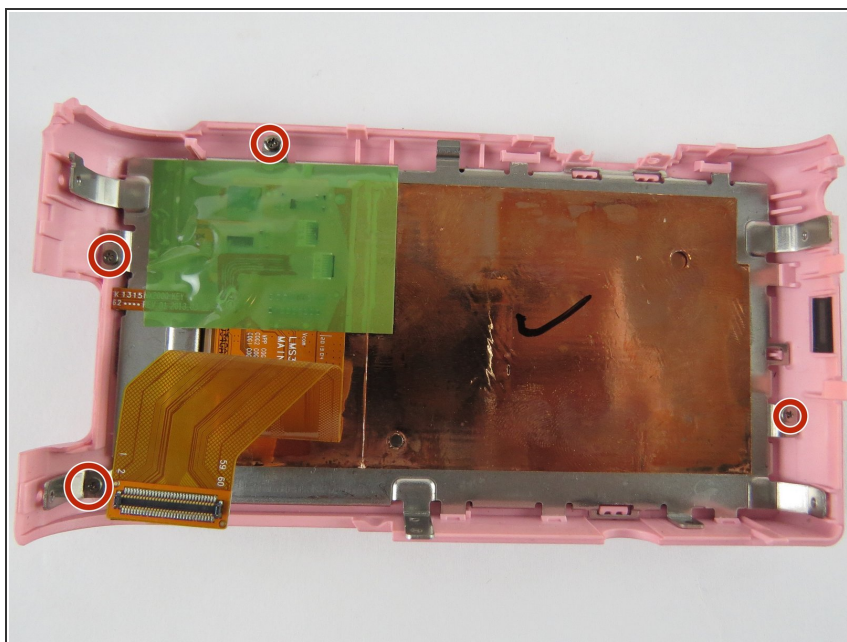
## Step 4



- Separate the LCD half compartment of the camera from the main body.

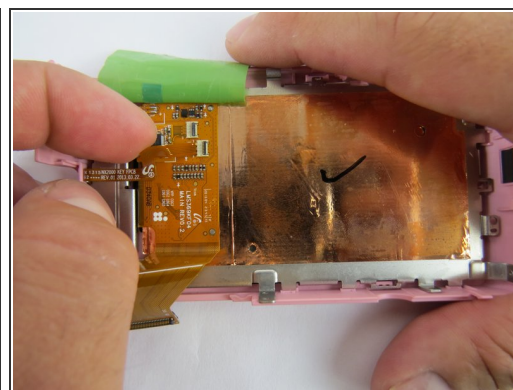
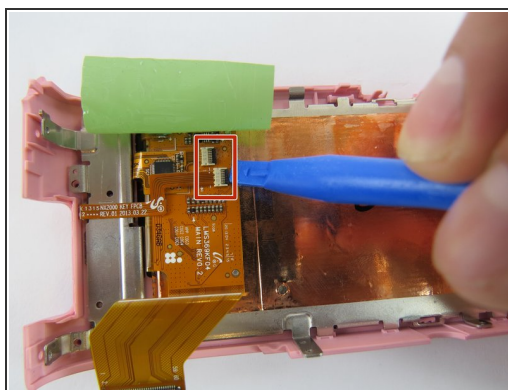
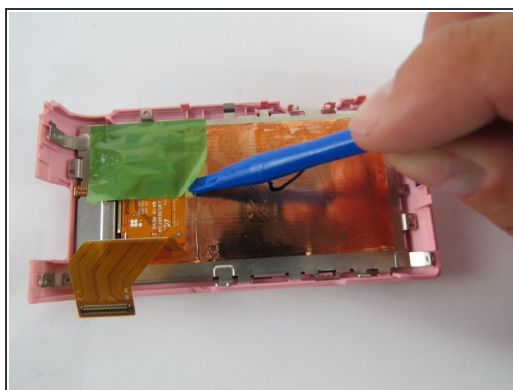


## Step 5



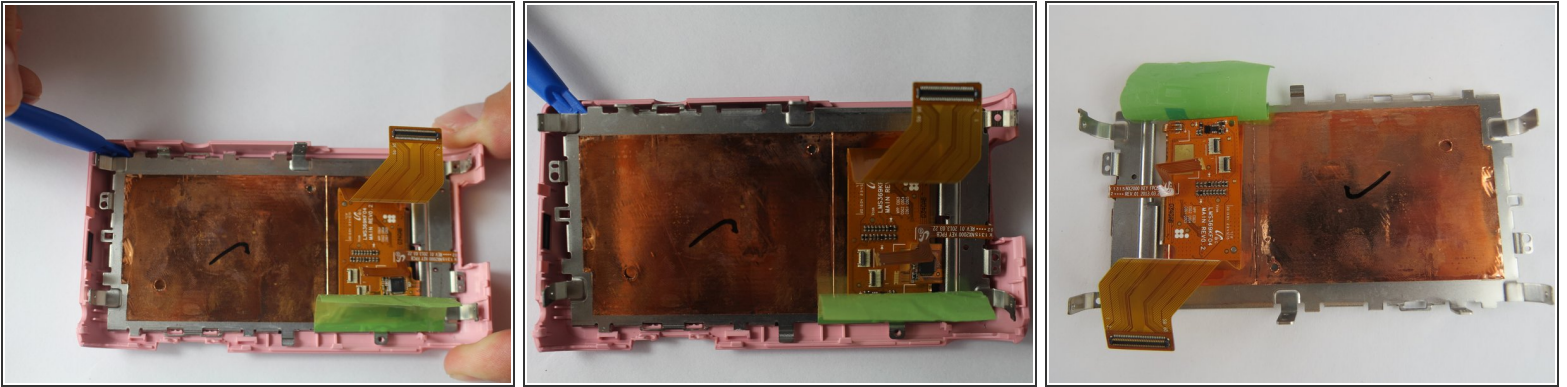
- Remove the four 1mm screws with the Y0 screwdriver.

## Step 6



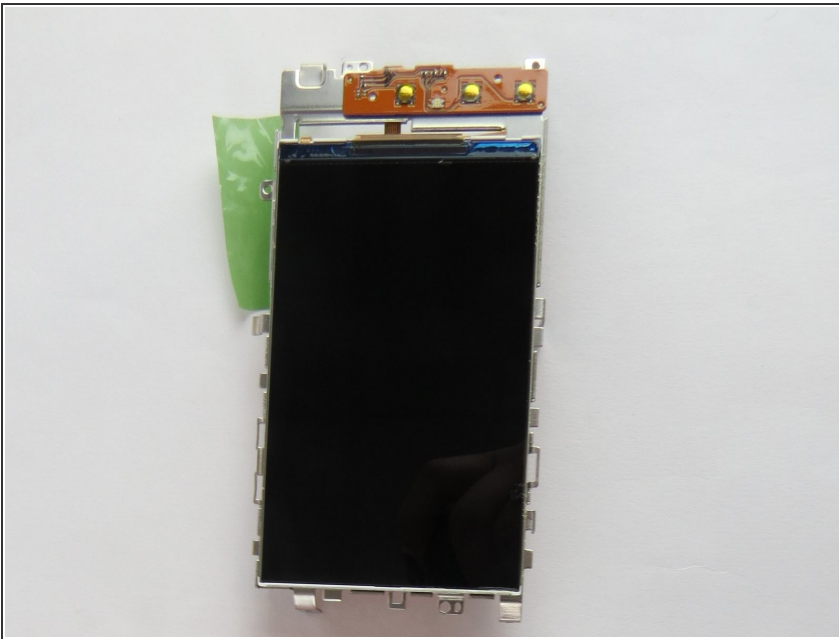
- Use a plastic opening tool or tweezers to lift the green tape located on top of the LCD controller board.
- Detach the two ribbon cables, by first lifting the black tab on top of the connector.
- Pull the ribbon cables out of the connectors with tweezers or two fingers.

## Step 7



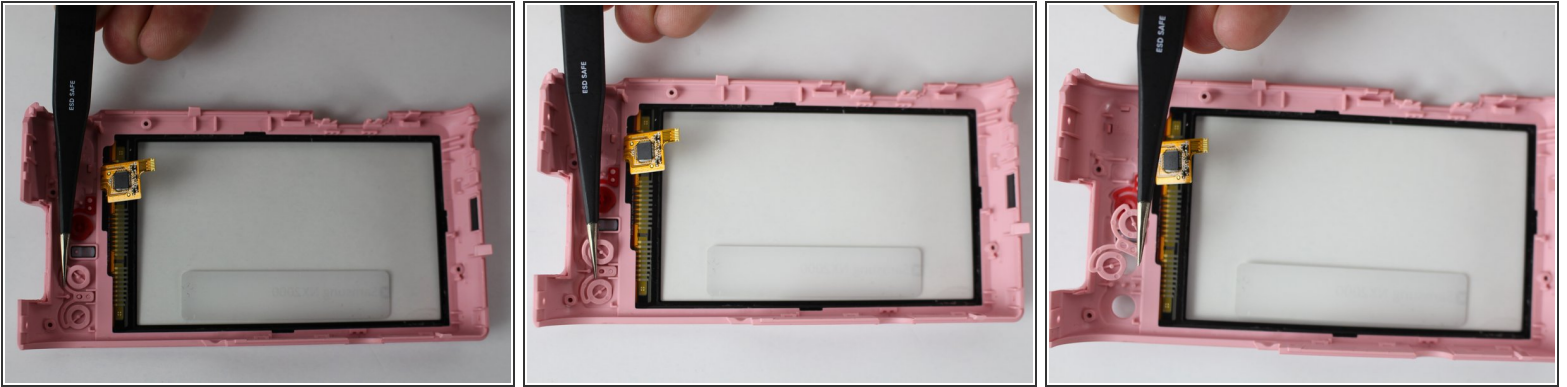
- Place blue plastic spudger in between LCD screen and plastic surrounding.
- Begin to lift up slowly, removing the LCD screen from the main frame.

## Step 8



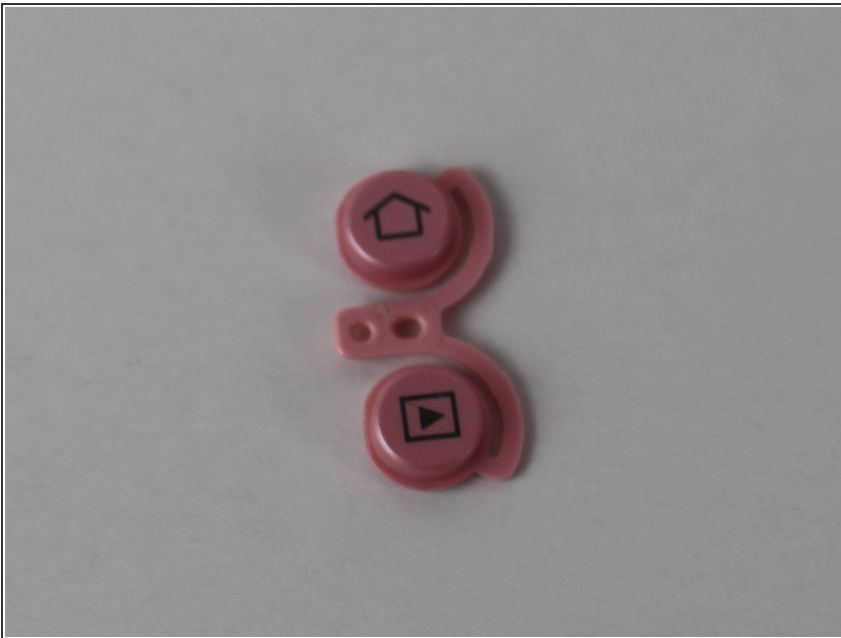
- The LCD screen is now separated form the main frame.

## Step 9 — Menu Buttons



- Use the tweezers to pull out the home and playback buttons from the camera frame.

## Step 10



- Remove the home buttons from the camera frame.

To reassemble your device, follow these instructions in reverse order.