



Acer Aspire One AO756-2623 LCD Screen Replacement

Use this guide to replace a damaged or unresponsive LCD screen.

Written By: Davis Adams



INTRODUCTION

A functioning screen is essential for using a laptop effectively but it may become cracked or unresponsive. Replacing a damaged LCD requires the removal of the battery and then the front cover before accessing the LCD screen for removal. The removal of the screen for replacement is detailed in this guide.

TOOLS:

- [Phillips #0 Screwdriver](#) (1)
 - [Spudger](#) (1)
-

Step 1 — Battery



- Orient the ACER Aspire One to where the bottom of the laptop is facing upward as shown in the picture.

Step 2




- Locate the circular slot positioned at the bottom right of the battery.

Step 3



- Insert a spudger and slide the tab to the right.

 When working with electronics, it's important to choose a tool that's ESD-safe to avoid accidental damage to the device. The regular black nylon spudger or a plastic opening tool should be used whenever possible.

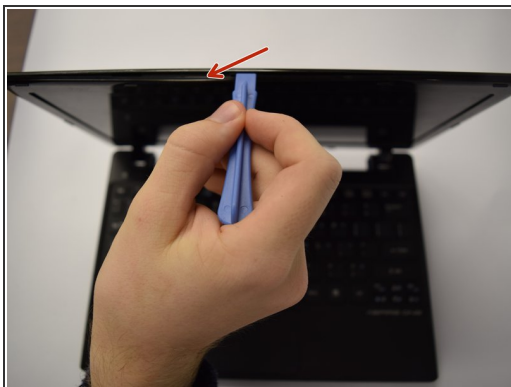
- Hold the tab in the right-hand position and firmly push or pull the battery upward to remove it from the laptop.

Step 4 — LCD Screen



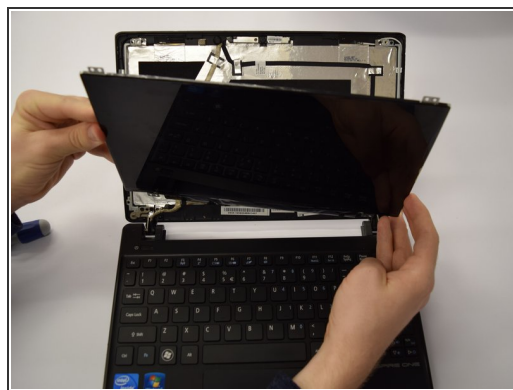
- Orient the laptop as shown in the picture with the open screen facing toward you.

Step 5



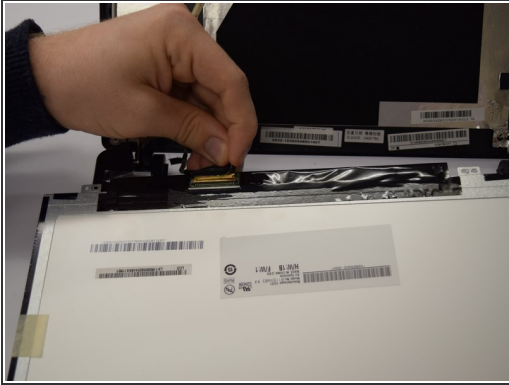
- Insert the spudger into the indicated crease.
- Firmly slide spudger around the edge of the entire laptop to remove the front plate of the screen.
- ⓘ Loud cracking noises from the plastic tabs separating may occur, do not worry, they are to be expected.

Step 6



- Identify the four 6 mm Phillips screws that are necessary to remove the LCD screen.
- Remove all four screws using a Phillips #0 Screwdriver.
- Pull away the LCD screen from the back cover of the laptop without ripping the ribbon cable connecting it to the bottom of the laptop.

Step 7



- Remove the tape covering the port connecting the screen to the bottom of the laptop.
- To remove the LCD screen, gently pull the cable straight out of the screen.
- ⓘ In the first and second photos, the screen is lying face down on the keyboard.

To reassemble your device, follow these instructions in reverse order.