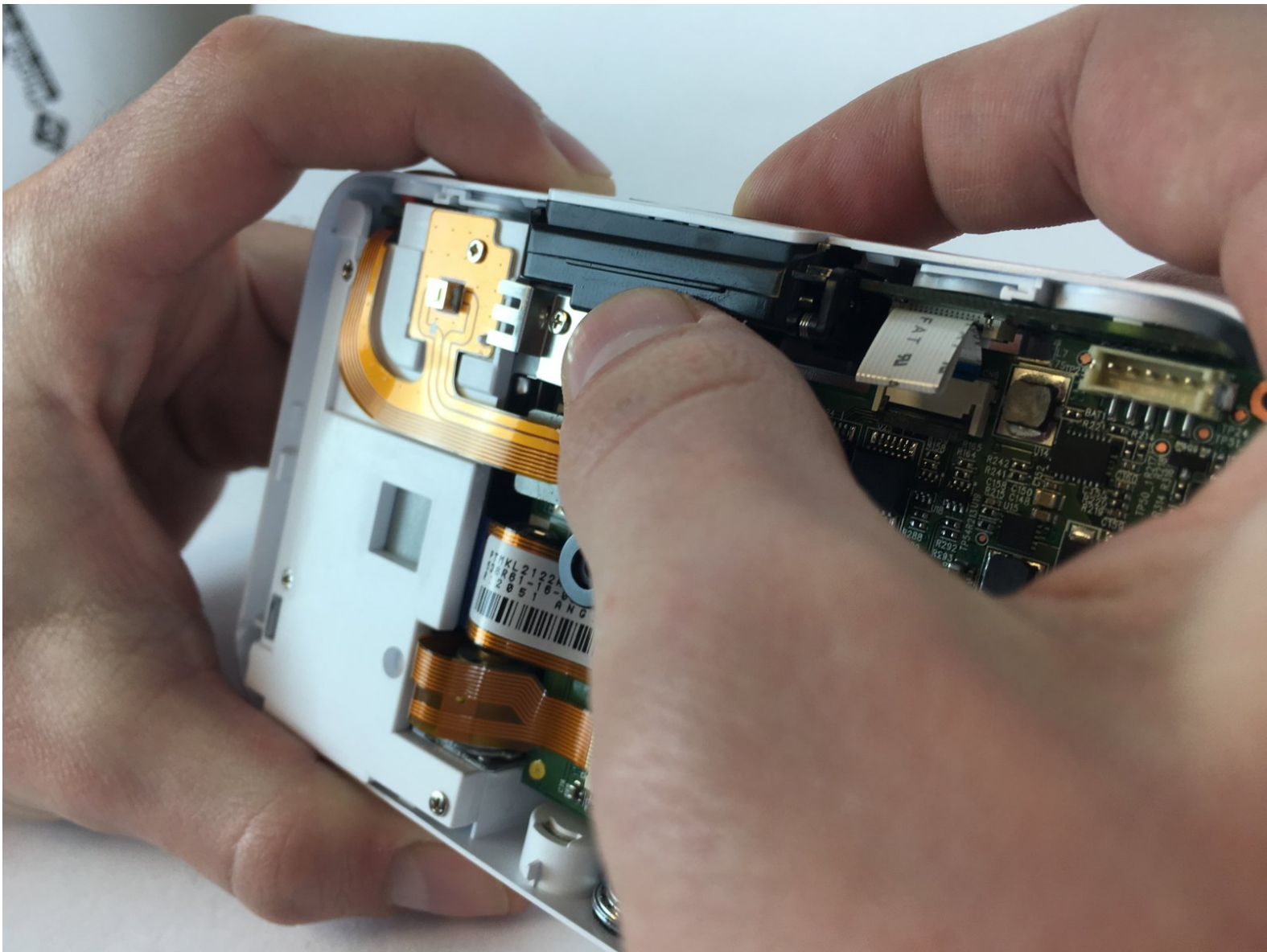




# Polaroid SNAP View Finder Replacement

This replacement guide will show you how to replace the view finder on your Polaroid SNAP.

Written By: Austin Broyles



# INTRODUCTION

This replacement guide is intended for those who have a broken or malfunctioning view finder on their Polaroid SNAP camera.

---

## TOOLS:

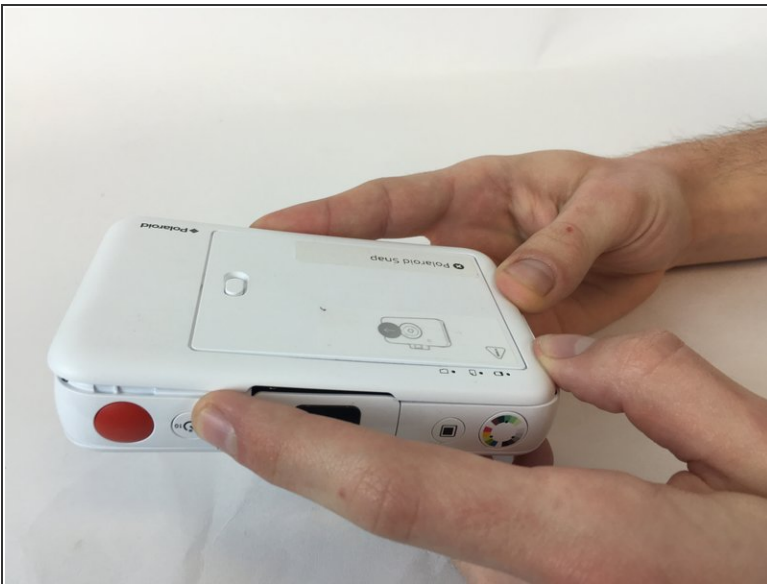
- [iFixit Opening Tool](#) (1)
  - [JIS Driver Set](#) (1)
-

## Step 1 — Polaroid SNAP Front and Back Face Plate Removal



- Open the paper door of the camera, then locate and remove the screws that are on the top and bottom edge of the inside of the camera.
- Screw head: Phillips, Screw length: 3mm

## Step 2



- Push the rear face plate from the short side nearest the screws you just removed towards the other short side of the camera. It should slide forward and unlock the clips holding it in place.
- Then it should be easy to simply lift the rear face plate up and remove it.



### Step 3



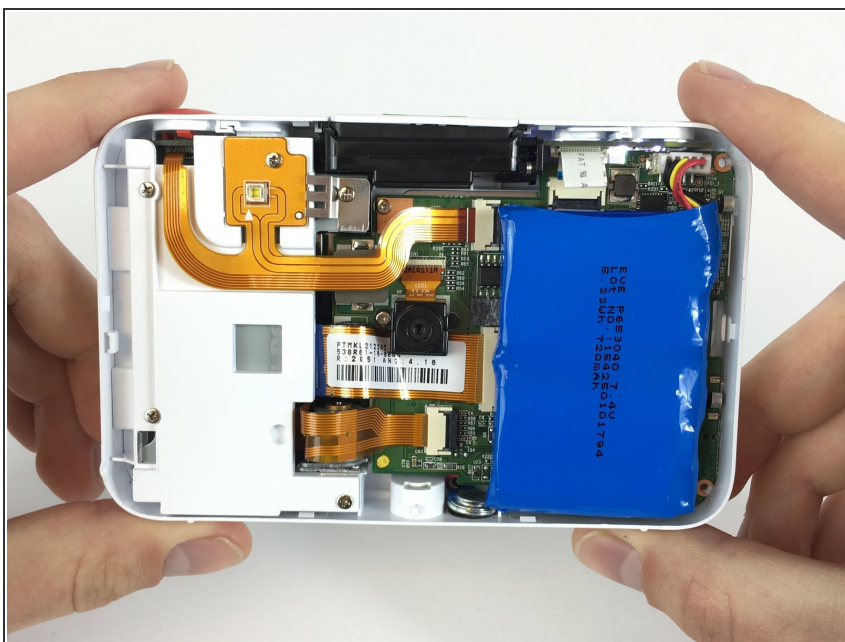
- Locate and remove the four screws on the corners of the camera, they're quite small and may be difficult to remove.
- Screw head: Philips, Screw length: 5mm

### Step 4



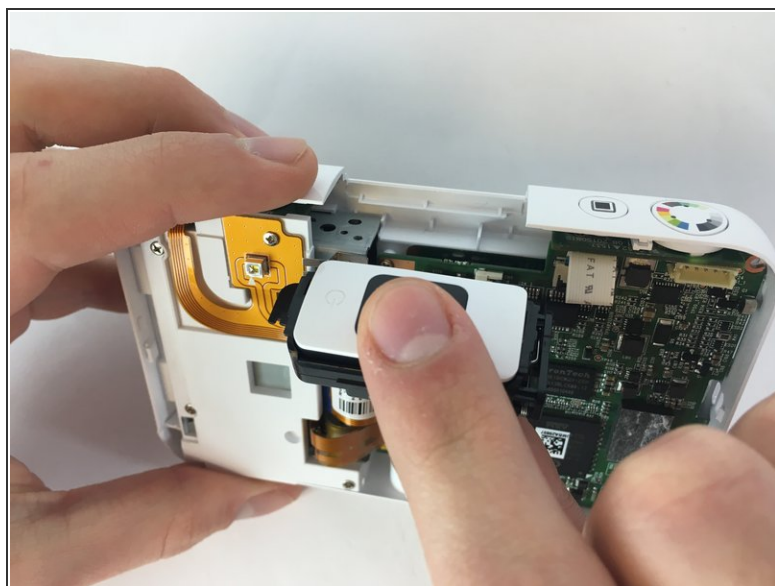
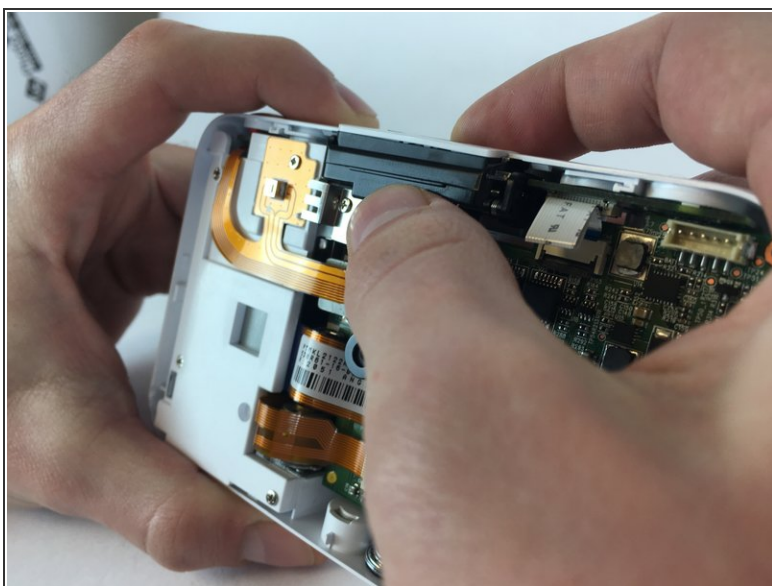
- Once the screws are removed, flip the camera over
- Use a plastic opening tool to disengage the six clips until the front face plate can be removed safely

## Step 5



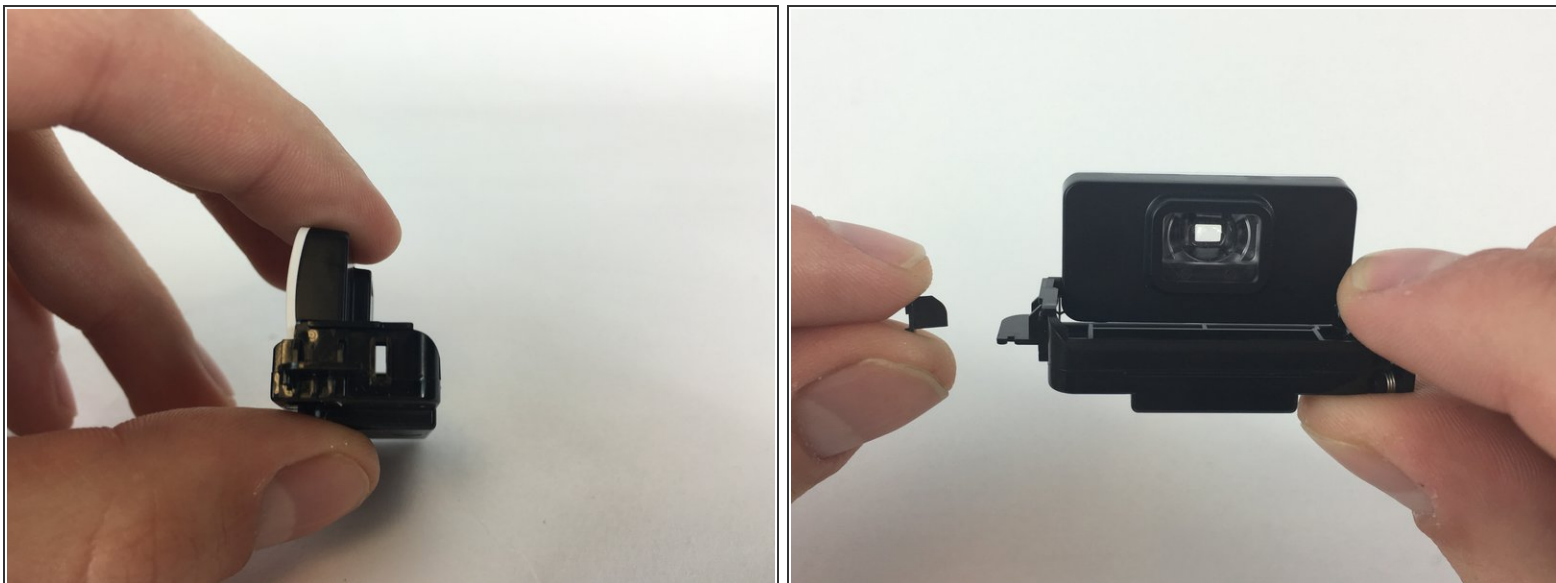
- The camera's innards should now be accessible to you

## Step 6 — View Finder



- Gently grasp the view finder (while in the closed position) with your thumb and fore finger. Then carefully pull the viewfinder outwards.

## Step 7



- Once the view finder is out, a small black tab should come loose from the viewfinder. Insert this small black tab in to the hole on the side of the new view finder, with the round side up.

To reassemble your device, follow these instructions in reverse order.