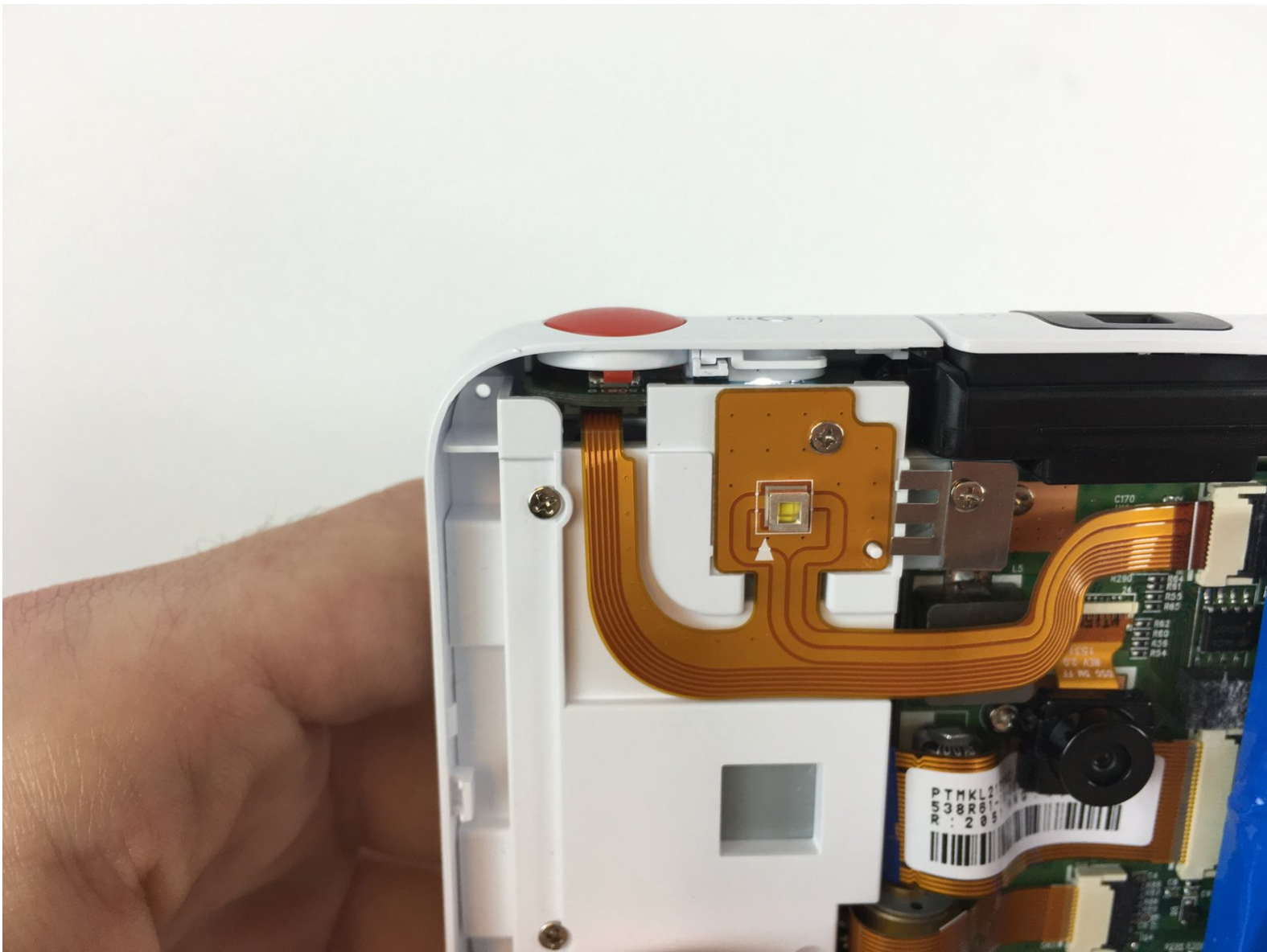




# Polaroid SNAP Shutter Button Replacement

This replacement guide will introduce how to properly replace a shutter button.

Written By: Felipe Gutierrez



---

## INTRODUCTION

Replace a shutter button on the Polaroid SNAP.



### TOOLS:

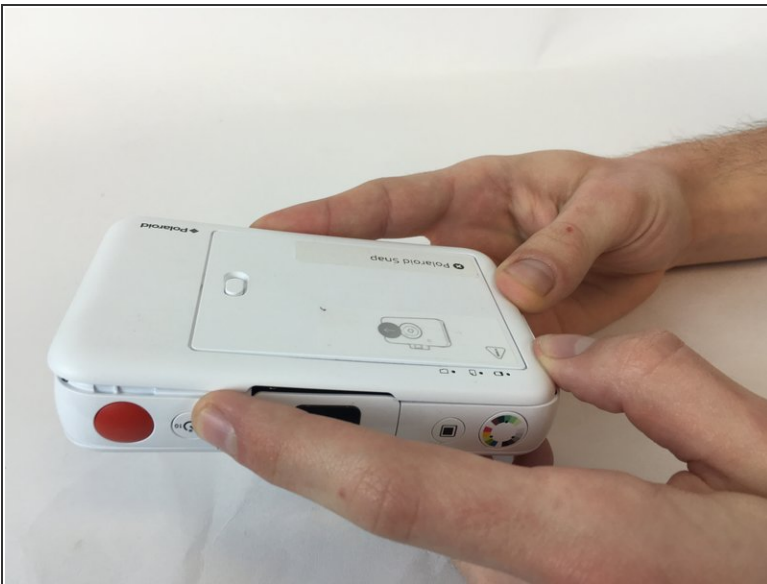
- [Metal Spudger](#) (1)
-

## Step 1 — Polaroid SNAP Front and Back Face Plate Removal



- Open the paper door of the camera, then locate and remove the screws that are on the top and bottom edge of the inside of the camera.
- Screw head: Phillips, Screw length: 3mm

## Step 2



- Push the rear face plate from the short side nearest the screws you just removed towards the other short side of the camera. It should slide forward and unlock the clips holding it in place.
- Then it should be easy to simply lift the rear face plate up and remove it.

### Step 3



- Locate and remove the four screws on the corners of the camera, they're quite small and may be difficult to remove.
- Screw head: Philips, Screw length: 5mm

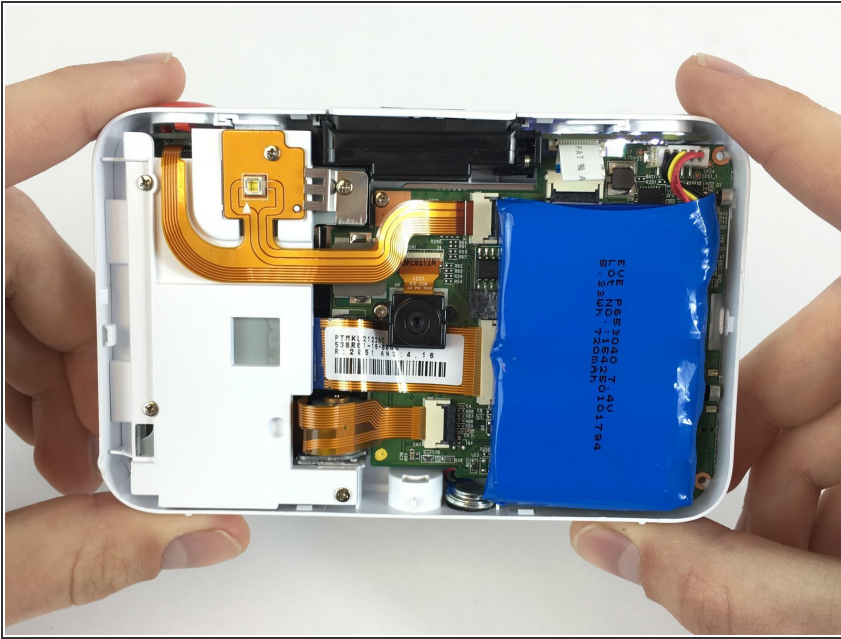
### Step 4



- Once the screws are removed, flip the camera over
- Use a plastic opening tool to disengage the six clips until the front face plate can be removed safely

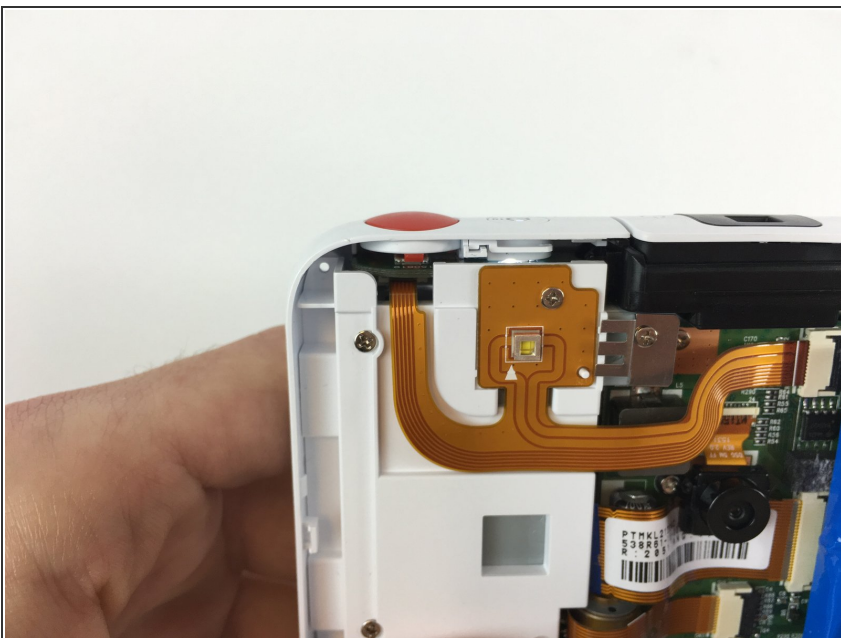


## Step 5



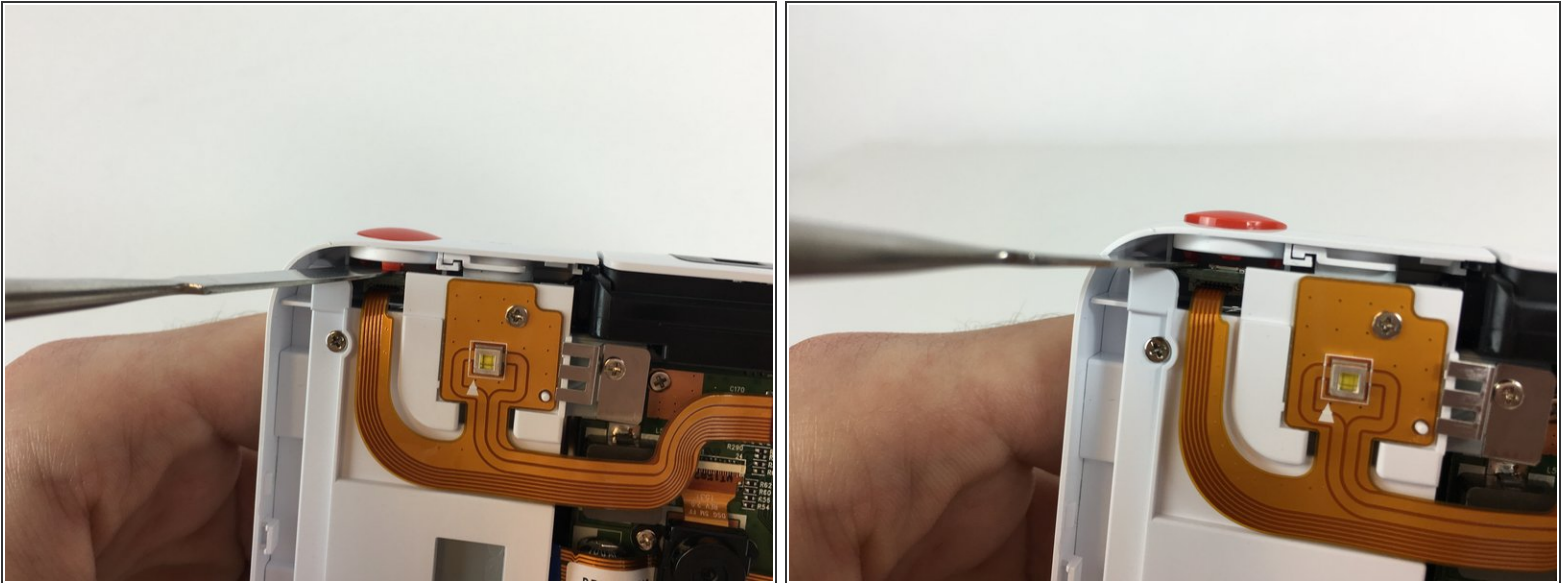
- The camera's innards should now be accessible to you

## Step 6 — Shutter Button



- Look at the top left corner of the camera. This is where the shutter button is located.

## Step 7

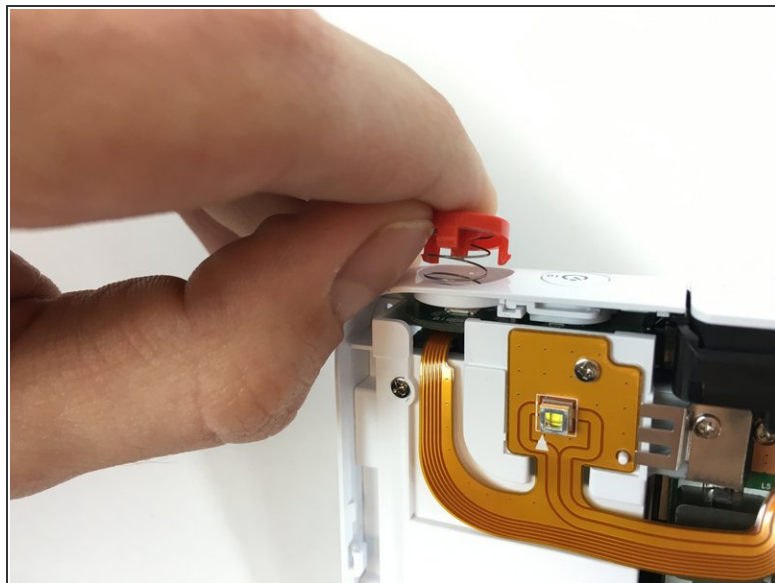
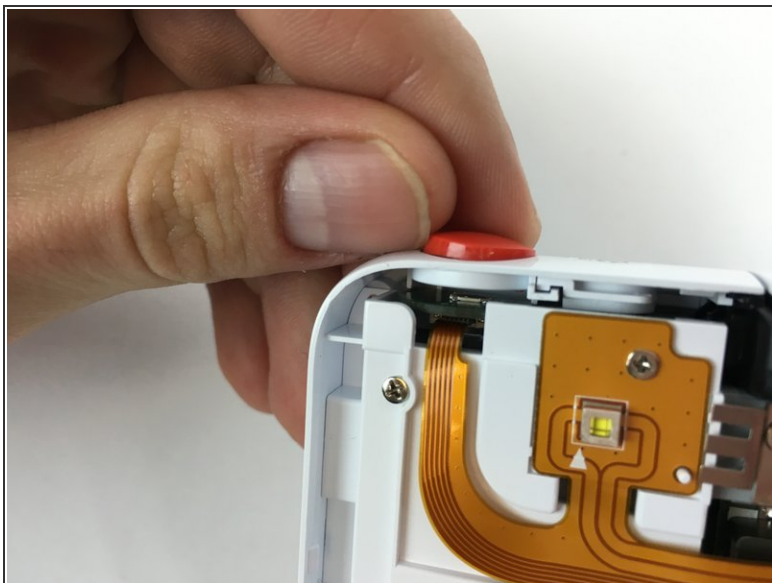


- Using the nylon spudger, locate the red tips under the shutter button.

**⚠ When working with electronics, it's important to choose a tool that's ESD-safe to avoid accidental damage to the device. The metal spudger is great when you need serious prying power, but the regular black nylon spudger or a plastic opening tool should be used whenever possible.**

- Gently push on the shutter button tabs upwards, until the tab is dislodged. Repeat same steps for other two tabs.

## Step 8



- Once shutter button has dislodged from underneath. Gently use your fingers to pull out the button, careful there is a spring underneath the button

To reassemble your device, follow these instructions in reverse order.